

WOLTERS ENGINEERING

ENGINEERING, DRAFTING, CONSULTING

15211 97th Road N
West Palm Beach, FL 33412
Ph/Fx: (561) 225-1982

PRODUCT EVALUATION

PRODUCT: WOOD EUROPEAN SERIES GLAZED LIFT AND SLIDE DOOR (MERBAU)

MANUFACTURER: LUXBAUM WINDOWS & DOORS
2400 CENTREPARK WEST DRIVE, SUITE 150
WEST PALM BEACH, FL 33409

To all concerned,

The Luxbaum Wood European Series Glazed Lift and Slide Door, manufactured by Luxbaum Windows & Doors LLC, is a multi-panel glazed wood door set in a wood frame. The door has been tested per TAS 201, 202, and 203 by Architectural Testing, Inc. with results shown in test reports B3811.01-450-18, B3811.04-450.18, and HTL# 0271-0908-10.

Technical Documentation:

1. Drawing "LIFT&SLIDE" dated 12/14/17 (Rev. 3), signed and sealed by Scott Wolters, PE.
2. Test Reports listed above by Architectural Testing, Inc. signed and sealed by Vinu Abraham, PE.
3. Supplemental calculations to support "LIFT&SLIDE" drawings, signed and sealed by Scott Wolters, PE.

I have reviewed this submittal per the requirements of FAC Product Approval Rule Chapter 61G20-3.005 (4). Based on the limitations listed below and those provided in the documents above, this product meets all the requirements of the 6th Edition (2017) Florida Building Code generally, and chapters 10, 11, 16, 23, and 24 specifically, including the HVHZ provisions.

Limitations: This door is approved for use inside and outside of the HVHZ. It is large and small impact resistant. Shutters are not required.

Overall Dimensions:

Maximum Frame Height:	157 3/4"
Maximum Frame Width:	Varies with number of panels
Maximum Panel Width:	68 1/16"
Maximum Design Pressure:	+63/-69 psf (See Design Pressure Table on Sheet 2)

Glass Options:

1 1/16" Monolithic Laminated
1/4" Heat Strengthened
0.180" SentryGlas Interlayer+
1/4" Heat Strengthened

1 3/8" Insulated Laminated
1/4" Heat Strengthened
0.180" SentryGlas Interlayer+
1/4" Heat Strengthened
7/16" Air Space
1/4" Tempered

+ I have evaluated the SentryGlas interlayer (NOA# 14-0916.11) referenced above and find that it complies with the requirements of the 6th Edition (2017) Florida Building Code for use in this product.

Locks:

Meeting Stiles:


(6) Siegenia Lock Bolts
(Part# PGKB0430)
(2) Siegenia Drop Bolt and Cup
(Part# DBSY200NR)

Interlocking Stiles:

(6) Siegenia Interlock Plates
(Part# PMZB0150)

If you have any questions or need more information concerning this approval please contact me.

Thank you,


Scott Wolters
FL PE# 62354
DEC 15 2017



WOLTERS ENGINEERING

ENGINEERING, DRAFTING, CONSULTING

15211 97th Road N
West Palm Beach, FL 33412
Ph/Fx: (561) 225-1982

PRODUCT EVALUATION

PRODUCT: WOOD EUROPEAN SERIES GLAZED LIFT AND SLIDE DOOR (TEAK)

MANUFACTURER: LUXBAUM WINDOWS & DOORS
2400 CENTREPARK WEST DRIVE, SUITE 150
WEST PALM BEACH, FL 33409

To all concerned,

The Luxbaum Wood European Series Glazed Lift and Slide Door, manufactured by Luxbaum Windows & Doors LLC, is a multi-panel glazed wood door set in a wood frame. The door has been tested per TAS 201, 202, and 203 by Intertek, with results shown in test report H6254.01-450-18 R0.

Technical Documentation:

1. Drawing "LIFT&SLIDE-TEAK" dated 12/12/17, signed and sealed by Scott Wolters, PE.
2. Intertek test report H6254.01-450-18 R0, signed and sealed by Vinu Abraham, PE.
3. Supplemental calculations to support "LIFT&SLIDE-TEAK" drawings, signed and sealed by Scott Wolters, PE.

I have reviewed this submittal per the requirements of FAC Product Approval Rule Chapter 61G20-3.005 (4). Based on the limitations listed below and those provided in the documents above, this product meets all the requirements of the 6th Edition (2017) Florida Building Code generally, and chapters 10, 11, 16, 23, and 24 specifically, including the HVHZ provisions.

Limitations: This door is approved for use inside and outside of the HVHZ. It is large and small impact resistant. Shutters are not required.

Overall Dimensions:

Maximum Frame Height:	138"
Maximum Frame Width:	Varies with number of panels
Maximum Panel Width:	66 9/16"
Maximum Design Pressure:	+50/-55 psf

Glass Options:

1 3/8" Insulated Laminated
1/4" Annealed
0.180" SentryGlas Interlayer+
1/4" Annealed
7/16" Air Space
1/4" Tempered

* I have evaluated the SentryGlas interlayer (NOA# 14-0916.11) referenced above and find that it complies with the requirements of the 6th Edition (2017) Florida Building Code for use in this product.


Locks:

Meeting Stiles:

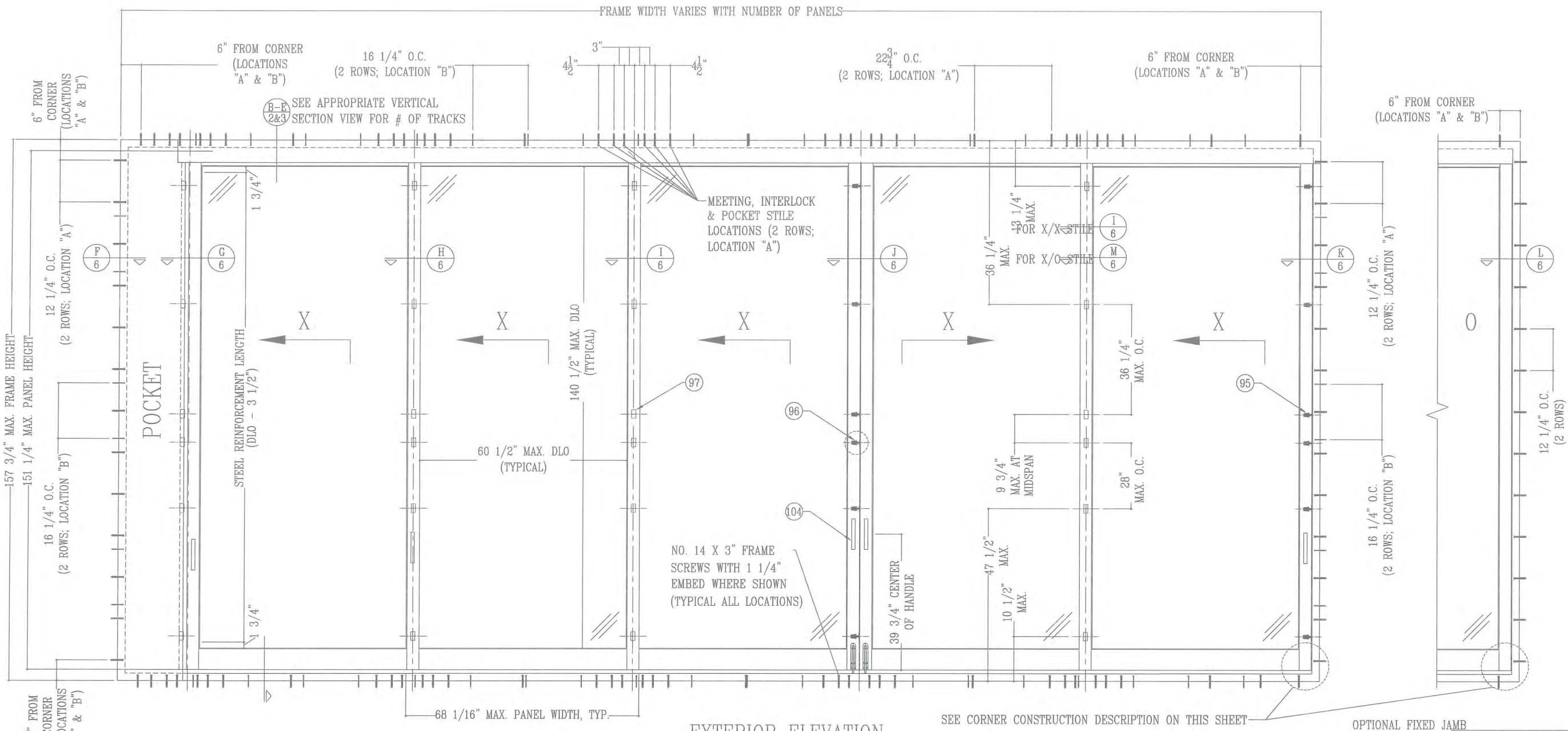
(5) Lock Bolts
(Functional Fenestration)

If you have any questions or need more information concerning this approval please contact me.

Thank you,


Scott Wolters
FL PE# 62354
DEC 15 2017





EXTERIOR ELEVATION

FOR SECTION CALLOUTS ONLY, CONFIGURATIONS NOT LIMITED TO 5 PANELS. SEE ALLOWABLE CONFIGURATIONS ON SHEET 2

DESIGN PRESSURES

SEE TABLE, SHEET 2

GENERAL NOTES

1. THIS APPROVAL APPLIES TO IMPACT RESISTANT LIFT AND SLIDE DOORS, IN THE CONFIGURATIONS AND CONSTRUCTED AND GLAZED AS INDICATED HEREIN.
2. ALLOWABLE DESIGN PRESSURES ARE AS INDICATED IN TABLE ON SHEET 2. THE TABLE IS BASED ON INDIVIDUAL PANEL SIZE, DOORS MAY HAVE ANY NUMBER OF PANELS.
3. THESE DOORS HAVE BEEN DESIGNED AND TESTED TO TAS 201, 202 & 203 PROTOCOLS IN ACCORDANCE WITH THE REQUIREMENTS OF THE 6TH EDITION (2017) FLORIDA BUILDING CODE (FBC) INCLUDING THE HIGH VELOCITY HURRICANE ZONE (HVHZ) PROVISIONS.
4. THESE DOORS AS SHOWN HEREIN ARE LARGE AND SMALL MISSILE IMPACT RATED, SHUTTERS ARE NOT REQUIRED.
5. WOOD OR MASONRY OPENINGS, BUCKS, AND BUCK FASTENERS, BY OTHERS, SHALL BE PROPERLY DESIGNED & INSTALLED TO TRANSFER WIND LOADS TO THE STRUCTURE.
6. ANCHOR TYPE, SIZE, SPACING, AND EMBEDMENT SHALL BE AS SPECIFIED IN THESE DRAWINGS. ANCHOR EMBEDMENT TO SUBSTRATE SHALL BE BEYOND WALL DRESSING OR STUCCO.
7. ALL FASTENERS PENETRATING INTO PRESSURE TREATED WOOD SHALL BE CAPABLE OF PREVENTING CORROSION DUE TO REACTION WITH PRESSURE TREATMENT CHEMICALS.
8. DISSIMILAR MATERIALS THAT COME INTO CONTACT SHALL BE PROTECTED TO PREVENT REACTIONS IN ACCORDANCE WITH FBC CHAPTERS 20 AND 23.
9. A WIND LOAD DURATION FACTOR $C_d = 1.6$ WAS USED FOR THE ANALYSIS OF WOOD SCREWS ONLY.
10. THE MERBAU WINDOWS LISTED IN THIS APPROVAL ARE CONSTRUCTED OF A NATURALLY DURABLE SPECIES (SPECIE SPECIFIC GRAVITY = 0.68) IN COMPLIANCE WITH FBC CHAPTER 23. OTHER NATURALLY DURABLE WOOD SPECIES OF EQUAL OR GREATER STRENGTH MAY BE SUBSTITUTED FOR ALL WOOD COMPONENTS.
11. MEMBERS NOTCHED AS NEEDED TO FIT HARDWARE AS SHOWN HEREIN.
12. JAMBS MAY BE OPERABLE, FIXED, OR POCKET ON EITHER SIDE OF DOOR.
13. THE GLAZING TYPES 1 AND 2 AS SHOWN IN GLAZING DETAILS ON SHEET 5 MAY BE USED IN ANY DOOR CONFIGURATION.
14. SUBSTRATES THAT MEET THE MINIMUM STRENGTH REQUIREMENTS AS SHOWN IN INSTALLATION ANCHOR REQUIREMENTS TABLE ON SHEET 7. CONCRETE OR MASONRY SUBSTRATES SHALL NOT BE CRACKED.
15. FOR INSTALLATION TO METAL SUBSTRATES, ANCHORS SHALL BE LONG ENOUGH TO BE FULLY THREADED THROUGH THE METAL THICKNESS WITH AN ADDITIONAL 3/16" MIN. OF THREADS BEYOND.
16. A MINIMUM CENTER-TO-CENTER SPACING OF 3" SHALL BE MAINTAINED BETWEEN ALL CONCRETE OR CMU ANCHORS IN ANY DIRECTION. THE SPACING AS INDICATED IN THE ELEVATION ON THIS SHEET SHALL BE REDUCED AS NEEDED TO ENSURE THAT THE 3" MINIMUM SPACING IS MAINTAINED BETWEEN LOCATION "A" AND LOCATION "B" ANCHORS.

CORNER CONSTRUCTION

JAMB CORNERS: MEMBERS ARE OF TONGUE AND GROOVE CONSTRUCTION AND MECHANICALLY FASTENED WITH FOUR(4) NO. 14 X 3" SS WOOD SCREWS PER CORNER, 7/8" FROM EDGE. CORNERS AND TONGUE TO GROOVE LOCATIONS ARE SEALED WITH SIKAFLEX 15 LM POLYURETHANE SEALANT.

SASH CORNERS:
TOP RAIL TO STILE CORNERS: TOP RAILS ARE COPED, BUTTED, FULLY GLUED WITH WOOD GLUE (61) AND DOWELED WITH FOUR(4) OPERABLE / SIX(6) FIXED 5/8" DIA. x 3 1/8" LONG MERBAU WOOD DOWELS.

BOTTOM RAIL TO STILE CORNERS: BOTTOM RAILS ARE COPED, BUTTED, FULLY GLUED WITH WOOD GLUE (61) AND DOWELED WITH SIX(6) 5/8" DIA. x 3 1/8" LONG MERBAU WOOD DOWELS.

DATE: 09/26/2013

NO.	REVISION DESCRIPTION	DATE
1	DESIGN PRESSURE TABLE ADDED	2/26/14
2	UPDATED TO 2014 FBC	6/15/15
3	UPDATED TO 2017 FBC	12/14/17

WOOD EUROPEAN SERIES GLAZED LIFT AND SLIDE DOORS (MERBAU)

LUXBAUM ,LLC
WINDOWS + DOORS

2400 CENTREPARK WEST DR, SUITE 150
WEST PALM BEACH, FL 33409

Ph: (561) 684-1500
www.luxbaum.com



SCOTT WOLTERS
FL PE# 62354

WOLTERS ENGINEERING
(CO.# 27194)
15211 97TH ROAD N
WEST PALM BEACH, FL 33412

DRAWING NO.
LIFT&SLIDE

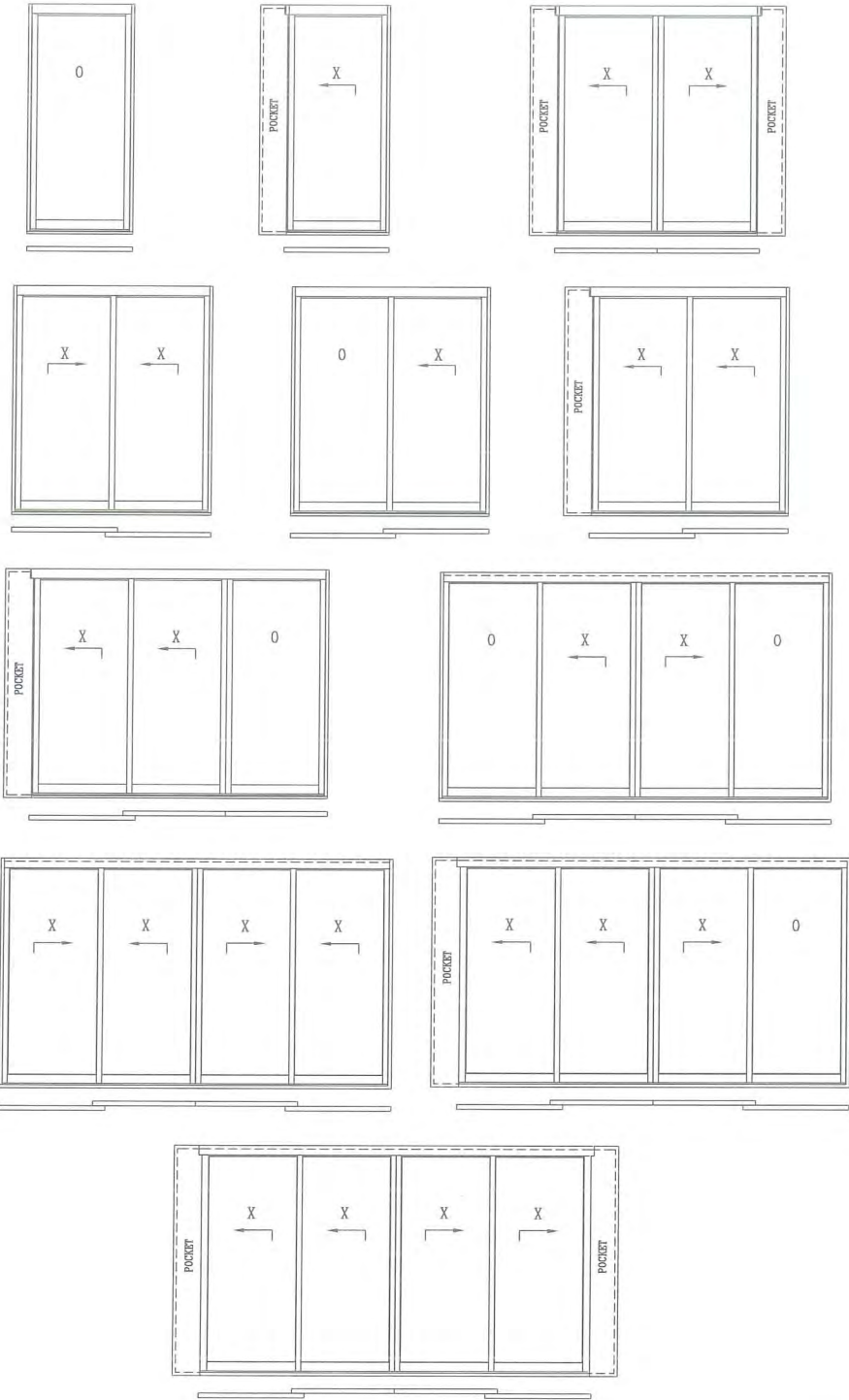
SHEET NO.
1 OF 12

DESIGN PRESSURE TABLE NOTES

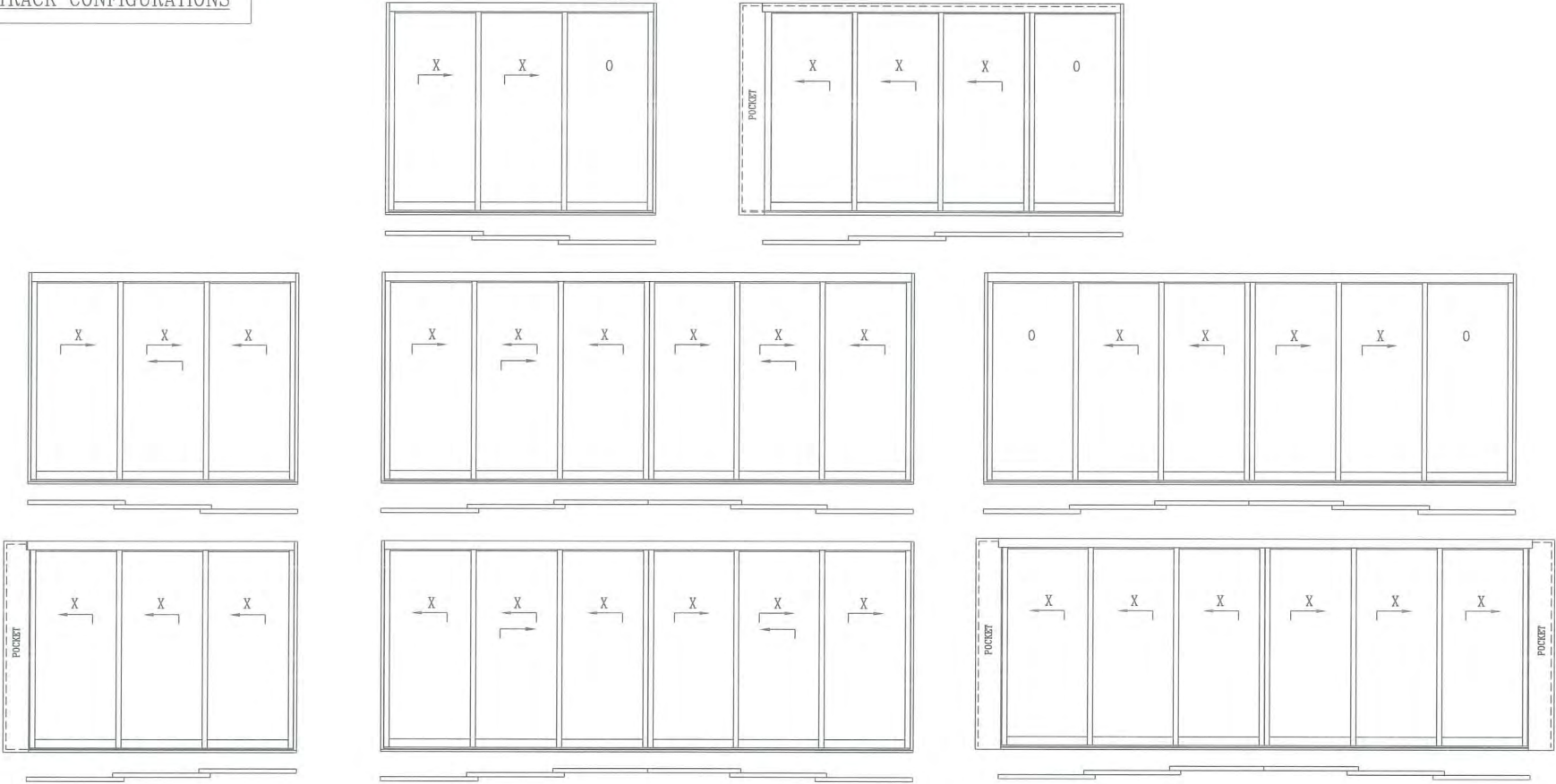
1. THE TABLE IS BASED ON INDIVIDUAL PANEL SIZE, AND IS APPLICABLE TO DOORS WITH ANY NUMBER OF PANELS.
2. REINFORCEMENT REQUIREMENTS ARE AS FOLLOWS:
- STEEL/STEEL - REQUIRES THE USE OF 1-1/2"x2"x1/4" STEEL ANGLES (ITEM 98a) IN ALL INTERLOCKS, AND STEEL FIN REINFORCEMENT (SECT. J, SHEET 6) AT MEETING STILES.
- STEEL/MERBAU - REQUIRES THE USE OF 1-1/2"x2"x1/4" STEEL ANGLES (ITEM 98a) IN ALL INTERLOCKS, AND MERBAU FIN REINFORCEMENT (SECT. J, SHEET 6) AT MEETING STILES.
- NONE - ITEM 98a AT INTERLOCKS AND FIN REINFORCEMENTS AT MEETING STILES ARE NOT REQUIRED.

Design Pressure Table		Panel Heights (in.)						
		84	96	108	120	132	144	151 5/16
Panel Widths (in.)	36	Reinforcement:						
		Steel/Steel	+63.0/-69.0	+63.0/-69.0	+63.0/-69.0	+63.0/-69.0	+63.0/-69.0	+63.0/-69.0
		Steel/Merbau	+63.0/-69.0	+63.0/-69.0	+63.0/-69.0	+63.0/-69.0	+63.0/-69.0	+63.0/-69.0
	48	None	+63.0/-69.0	+63.0/-69.0	+63.0/-69.0	+63.0/-69.0	N/A	N/A
		Steel/Steel	+63.0/-69.0	+63.0/-69.0	+63.0/-69.0	+63.0/-69.0	+63.0/-69.0	+63.0/-69.0
		Steel/Merbau	+63.0/-69.0	+63.0/-69.0	+63.0/-69.0	+63.0/-69.0	+63.0/-69.0	+63.0/-65.6
	60	None	+63.0/-69.0	+63.0/-69.0	+63.0/-69.0	+63.0/-69.0	N/A	N/A
		Steel/Steel	+63.0/-69.0	+63.0/-69.0	+63.0/-69.0	+63.0/-69.0	+63.0/-69.0	+63.0/-69.0
		Steel/Merbau	+63.0/-64.7	+63.0/-64.7	+63.0/-64.7	+63.0/-64.7	+58.6/-58.6	+55.1/-55.1
	68 1/16	None	+64.0/-59.2	+54.0/-59.2	+54.0/-59.2	+51.9/-56.8	N/A	N/A
		Steel/Steel	+63.0/-69.0	+63.0/-69.0	+63.0/-69.0	+63.0/-69.0	+63.0/-69.0	+63.0/-69.0
		Steel/Merbau	+60.25/-60.25	+50.25/-50.25	+50.25/-50.25	+50.25/-50.25	+50.25/-50.25	+50.25/-50.25
		None	+42.0/-46.0	+42.0/-46.0	+42.0/-46.0	+42.0/-46.0	N/A	N/A
		Steel/Steel						
		Steel/Merbau						

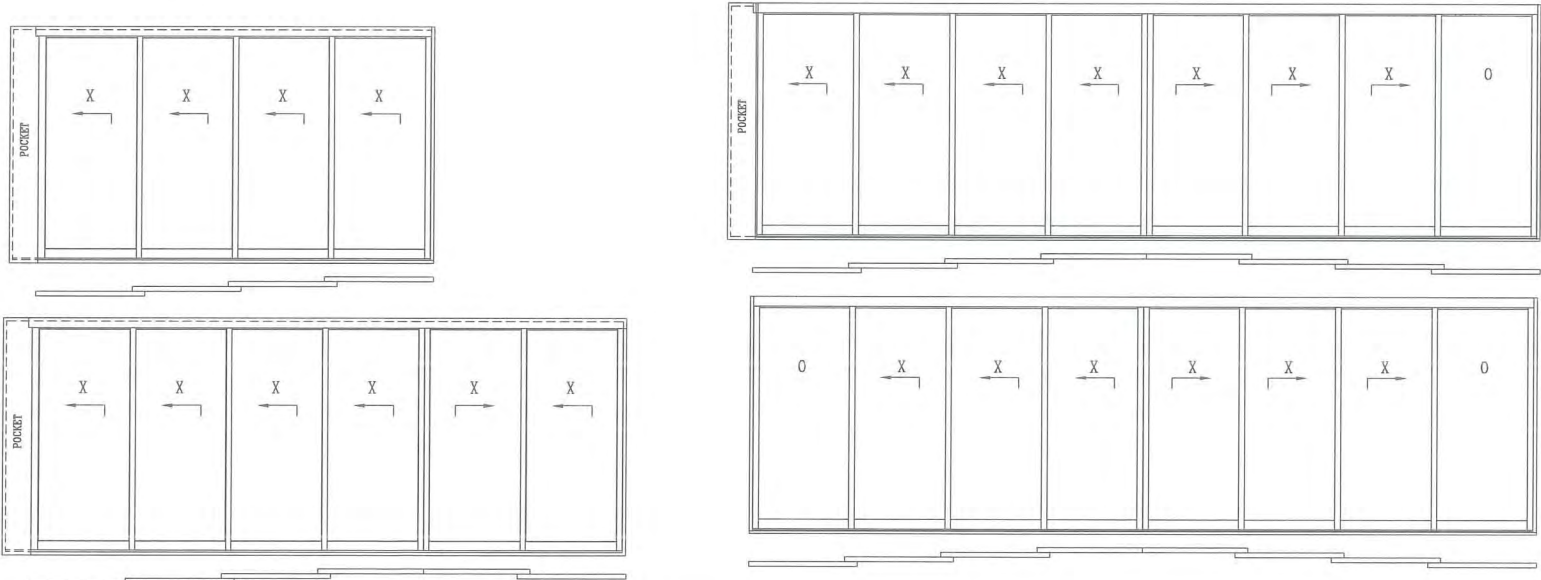
2-TRACK CONFIGURATIONS



3-TRACK CONFIGURATIONS



4-TRACK CONFIGURATIONS



DATE: 09/26/2013

DATE	2/26/14
DESIGN PRESSURE TABLE ADDED	6/15/15
UPDATED TO 2014 FBC	

WOOD EUROPEAN SERIES GLAZED LIFT AND SLIDE DOORS (MERBAU)

LUXBAUM ,LLC
WINDOWS + DOORS

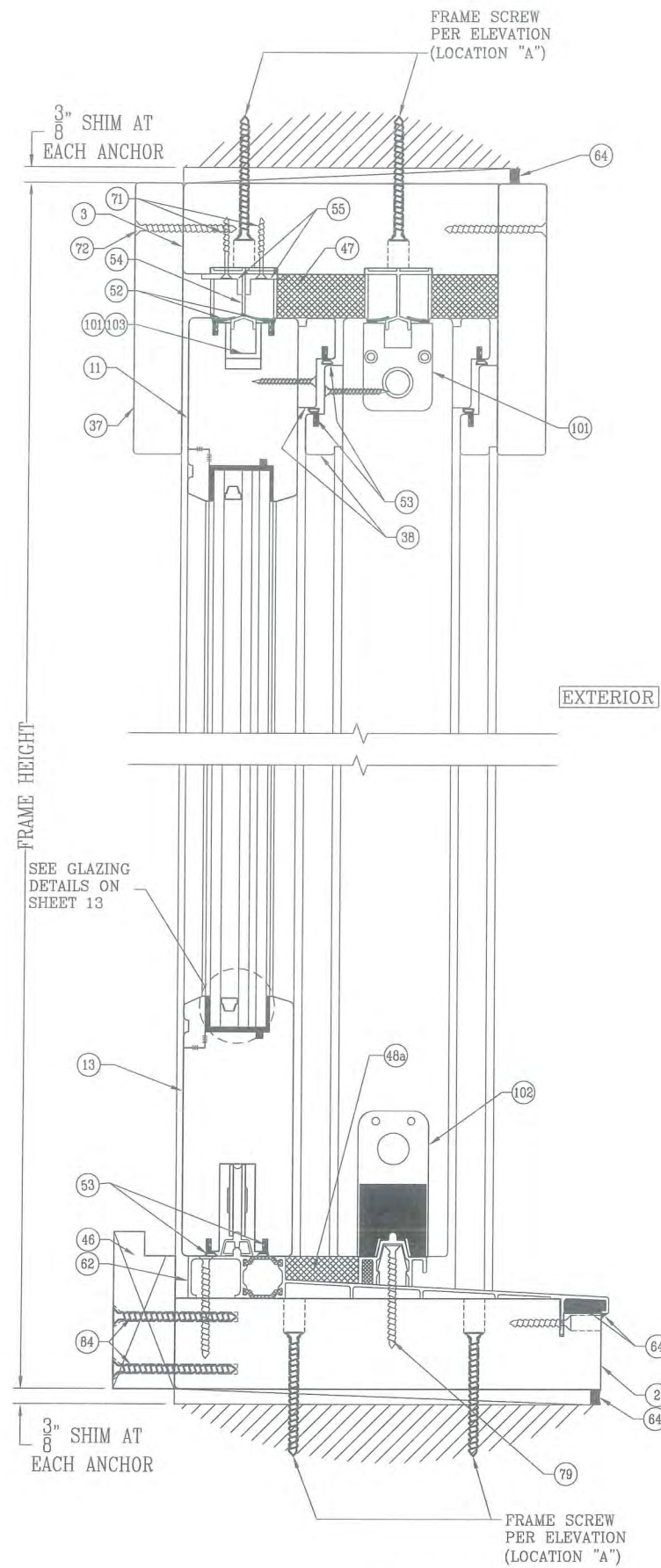
2400 CENTREPARK WEST DR, SUITE 150
WEST PALM BEACH, FL 33409

Ph: (561) 684-1500
www.luxbaum.com

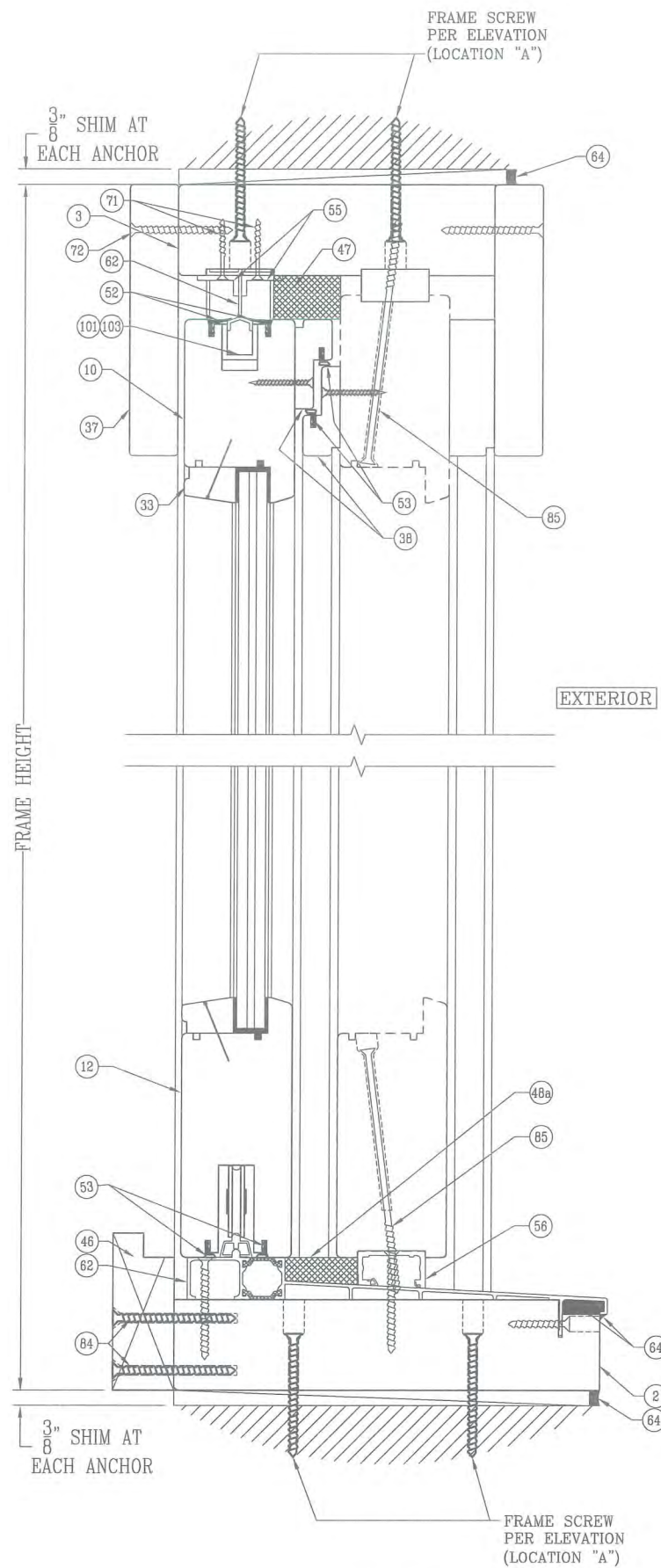
SCOTT WOLTERS
FL PE# 62354

WOLTERS ENGINEERING
(COA# 27194)
15211 97TH ROAD N
WEST PALM BEACH, FL 33412

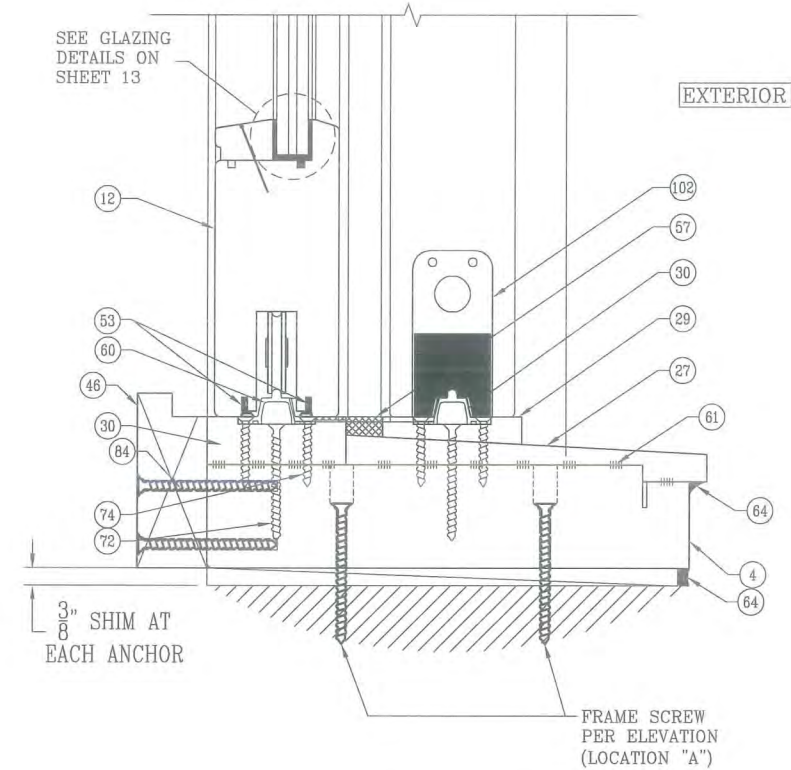
DEC 15 2017



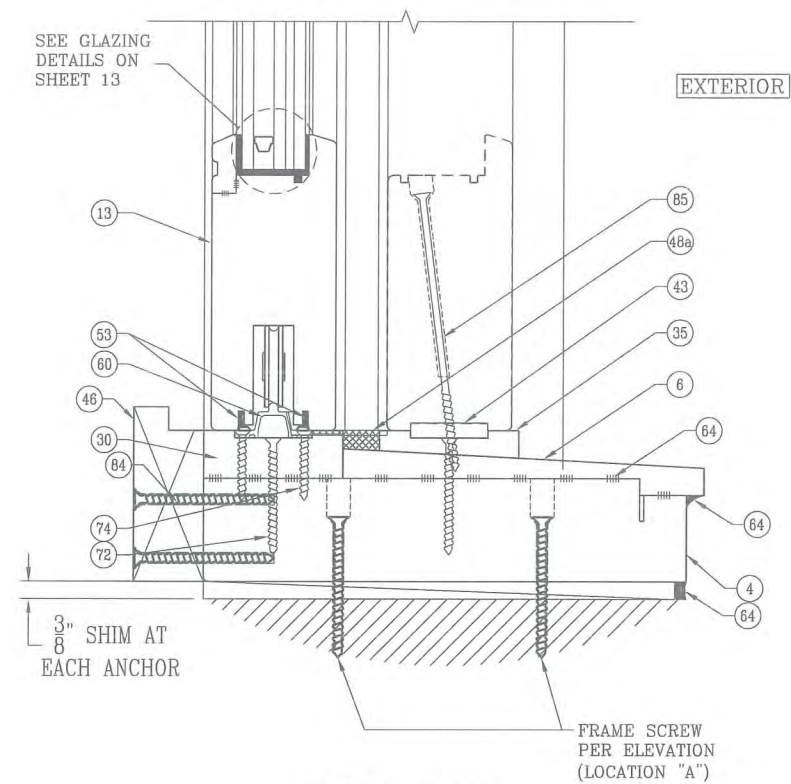
SECTION B
ALUMINUM SILL X/X 2-TRACK



SECTION C
ALUMINUM SILL X/O 2-TRACK

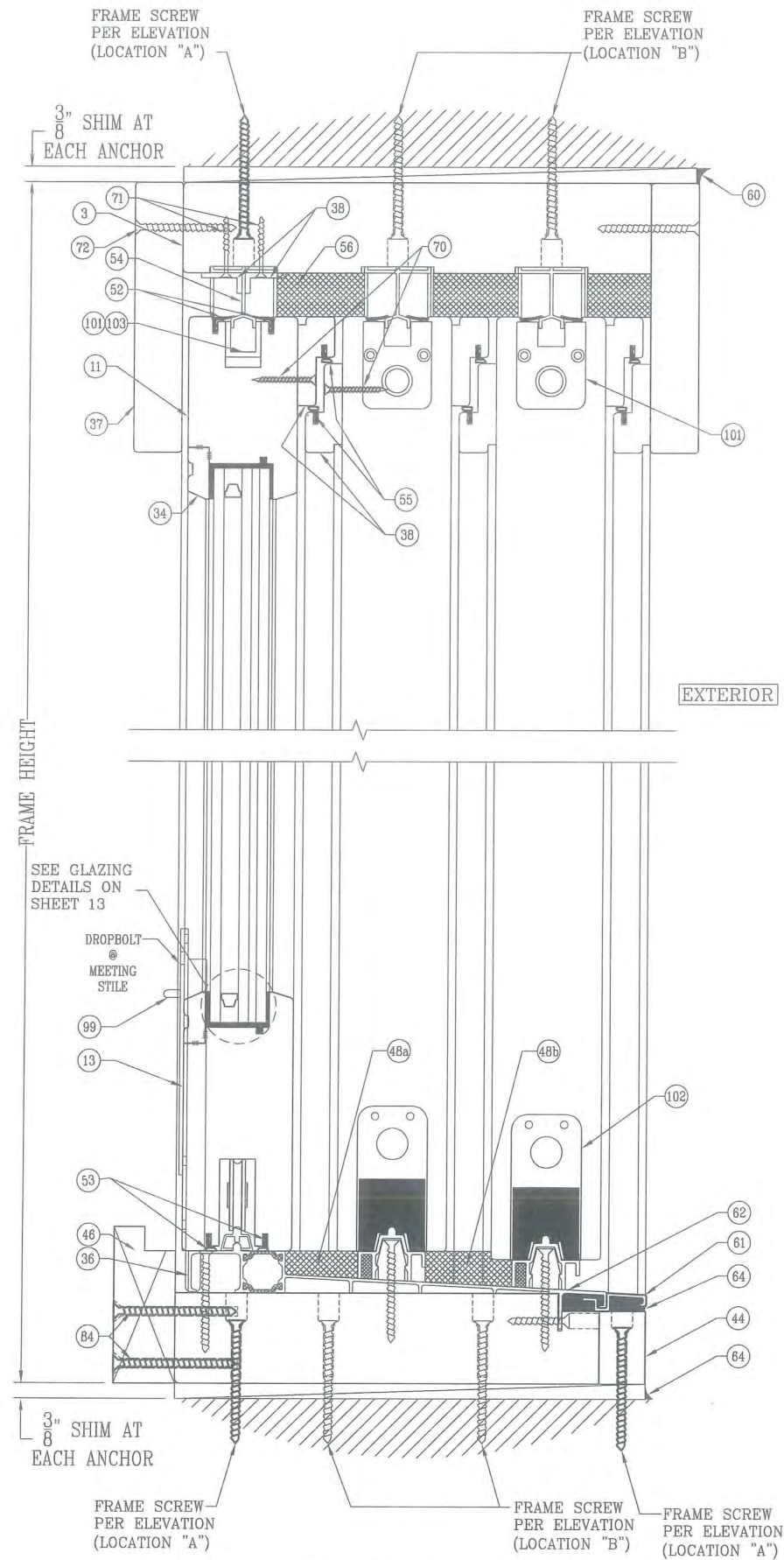


SECTION B ALT.
WOOD SILL X/X 2-TRACK

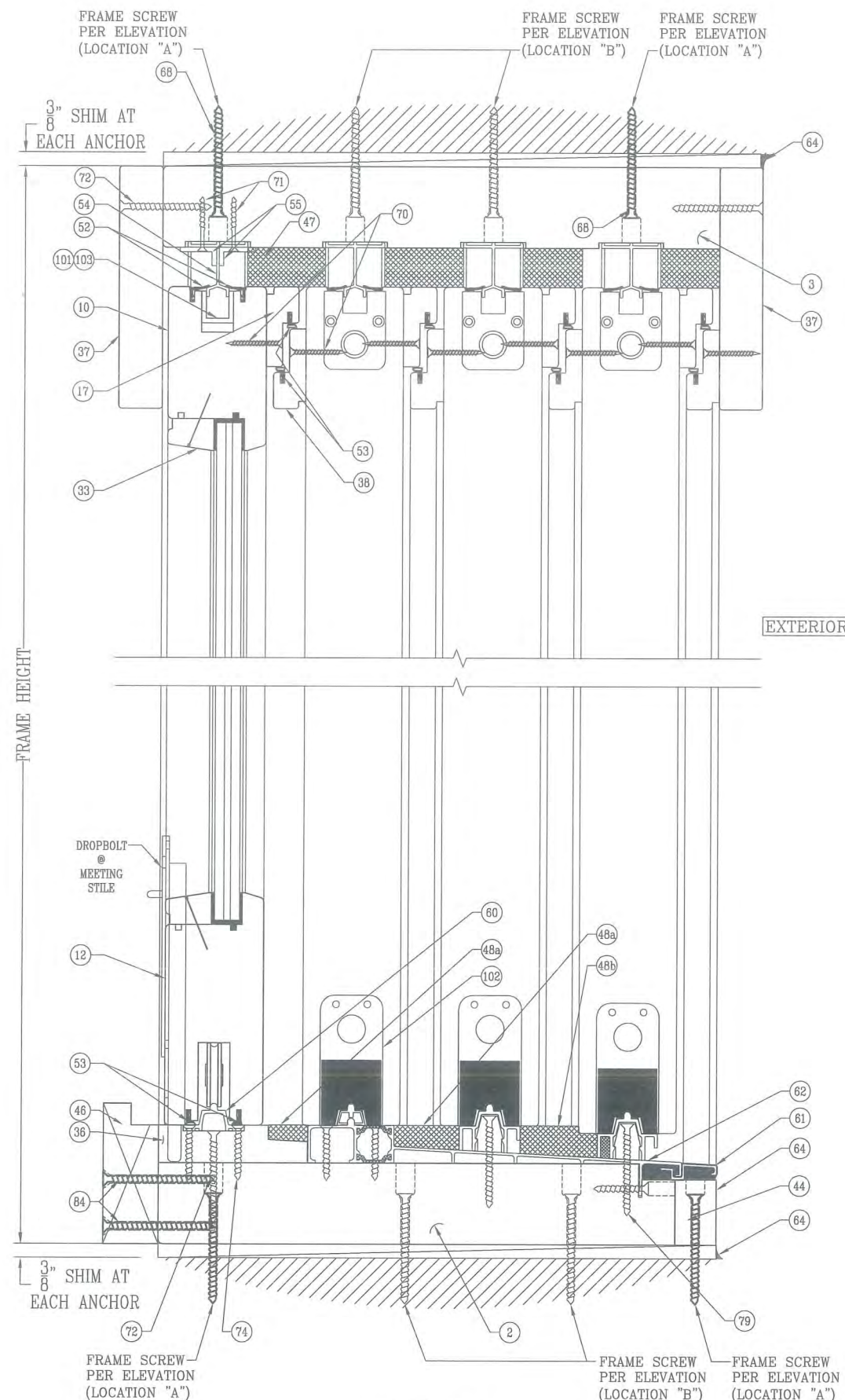


SECTION C ALT.
WOOD SILL X/O 2-TRACK

DATE: 09/26/2013			
DATE	6/15/15		
REVISION DESCRIPTION	UPDATED TO 2014 FBC		
NO.	2		
WOOD EUROPEAN SERIES GLAZED LIFT AND SLIDE DOORS (MERBAU)			
			
LUXBAUM, LLC			
WINDOWS + DOORS			
2400 CENTREPARK WEST DR, SUITE 150		Ph: (561) 684-1500	
WEST PALM BEACH, FL 33409		www.luxbaum.com	
			
SCOTT WALTERS FL PE# 62354			
WALTERS ENGINEERING (COA# 27194) 15211 97TH ROAD N WEST PALM BEACH, FL 33412			
DRAWING NO. LIFT&SLIDE			
SHEET NO. 3 OF 12			



SECTION D
ALUMINUM & WOOD SILL 3-TRACK



SECTION E
ALUMINUM & WOOD SILL 4-TRACK

DATE: 09/26/2013

DATE	REVISION DESCRIPTION	NO.
6/15/15	UPDATED TO 2014 FBC	2

WOOD EUROPEAN SERIES GLAZED LIFT AND SLIDE DOORS (MERBAU)

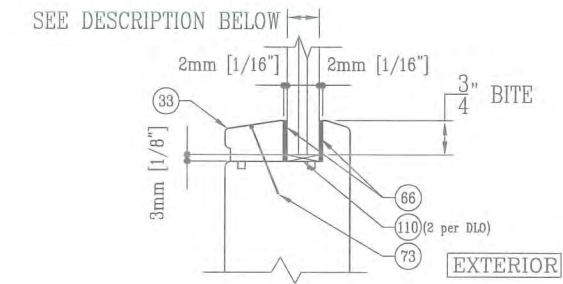
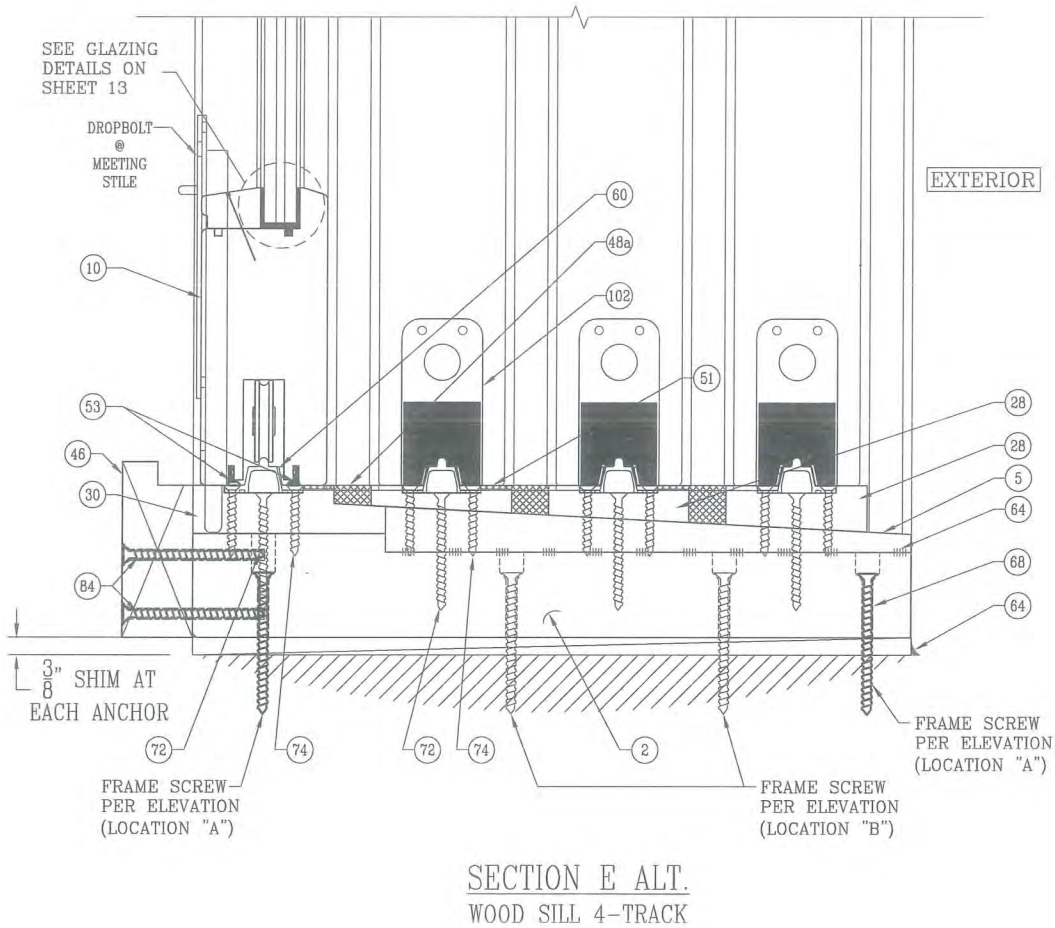
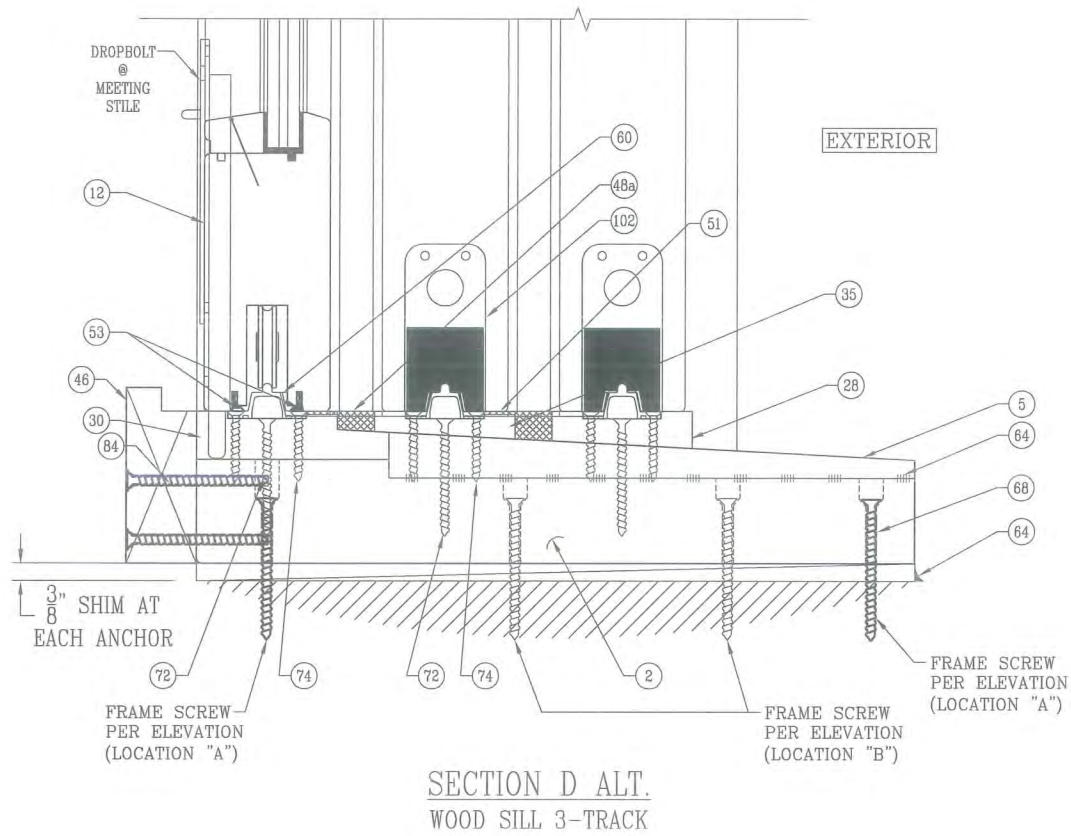
LUXBAUM, LLC
WINDOWS + DOORS

2400 CENTREPARK WEST DR, SUITE 150
WEST PALM BEACH, FL 33409

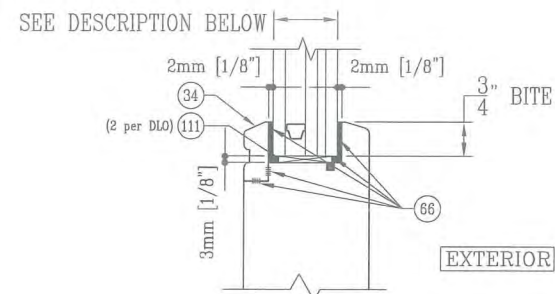
Ph: (561) 684-1500
www.luxbaum.com



DRAWING NO. LIFT&SLIDE
SHEET NO. 4 OF 12



GLASS TYPE "A"; 11/16" LAMINATED GLASS (1/4" HT.
ST./0.180 SGP/1/4" HT. ST.)



GLASS TYPE "B"; 1 3/8" LAMINATED I.G. WITH
1/4" H.S.-0.180" SGP-1/4" H.S.-7/16" AIR SPACE
W/ALUM. SPACER (BLACK)-1/4" TEMPERED.

DATE: 09/26/2013

DATE	REVISION DESCRIPTION	NO.
6/15/15	UPDATED TO 2014 FBC	2

WOOD EUROPEAN SERIES GLAZED LIFT AND SLIDE DOORS (MERBAU)

LUXBAUM LLC
WINDOWS + DOORS

2400 CENTREPARK WEST DR, SUITE 150
WEST PALM BEACH, FL 33409
Ph: (561) 684-1500
www.luxbaum.com



DRAWING NO.
LIFT&SLIDE

SHEET NO.
5 OF 12

SECTION F

SECTION G

STILE TO POCKET STILE
ATTACHMENT DETAIL

SECTION H
(FOR DETAIL NOT SHOWN,
SEE SECTION C)

SECTION I
(X/X)

SECTION J

STEEL FIN DETAIL

MERBAU FIN DETAIL

SECTION M
(X/0)

SECTION K
OPERABLE PANEL

SECTION L
FIXED PANEL

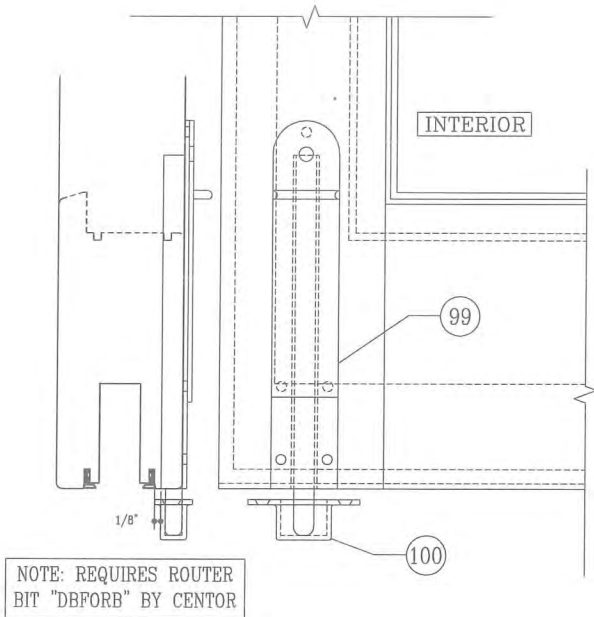
		<p>WOOD EUROPEAN SERIES GLAZED LIFT AND SLIDE DOORS (MERBAU)</p>		<p>DATE</p> <p>09/26/2013</p>	
<p>SCOTT WOLTERS FL PER# 62354</p>		<p>WOLTERS ENGINEERING (COA# 27194) 15211 97TH ROAD N WEST PALM BEACH, FL 33412</p>		<p>NO.</p> <p>1</p> <p>2</p> <p></p> <p></p> <p></p>	
		<p>LUXBAUM^{LLC}</p> <p>WINDOWS + DOORS</p> <p>2400 CENTREPARK WEST DR, SUITE 150 WEST PALM BEACH, FL 33409</p> <p>Ph: (561) 684-1500 www.luxbaum.com</p>		<p>REVISION DESCRIPTION</p> <p>MTG. STILE REINF. DETAIL ADDED</p> <p>UPDATED TO 2014 FBC</p> <p></p> <p></p> <p></p>	
<p>DRAWING NO.</p> <p>LIFT&SLIDE</p>		<p>DATE</p> <p>2/26/14</p> <p>6/15/15</p>			
<p>SHEET NO.</p> <p>6 OF 12</p>					

INSTALLATION ANCHOR REQUIREMENTS TABLE

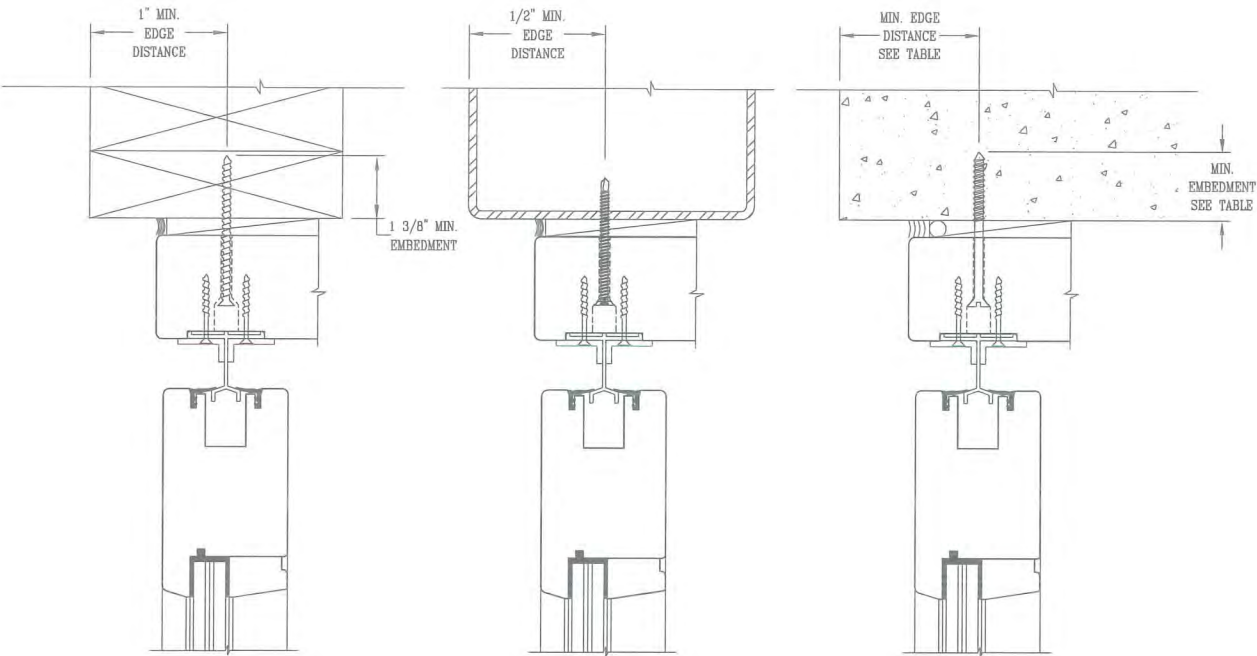
ID	SUBSTRATE	ANCHOR	MIN. EMBEDMENT	MIN. EDGE DISTANCE
A	CONCRETE OR GROUT-FILLED CMU (2850 PSI MIN)	1/4" ELCO COATED CARBON STEEL ULTRA-CON	1 3/4"	2 1/2"
B	CONCRETE (3000 PSI MIN)	1/4" HILTI COATED CARBON STEEL OR STAINLESS STEEL KWIK-CON II	1"	2 1/2"
C	HOLLOW OR GROUT-FILLED CMU (ASTM C-90)	1/4" HILTI COATED CARBON STEEL OR STAINLESS STEEL KWIK-CON II	1"	2 1/2"
D	2x MIN. SOUTHERN PINE WOOD (G=0.55 MIN)	#14 GRADE 5 WOOD SCREW	1 3/8"	1"
E	16 GAUGE (0.060") MIN. STEEL STUD 33 KSI YIELD MIN.	1/4-28 ITW TEKS SELF-DRILLING SCREW	SEE NOTE 15, SHEET 1	1/2"
F	1/8" ALUM. 6063-T5 MIN. OR 1/8" STEEL 33 KSI MIN.	#14 or 1/4" GRADE 5 SELF-TAPPING / DRILLING SCREW	SEE NOTE 15, SHEET 1	1/2"

INSTALLATION ANCHOR NOTES:

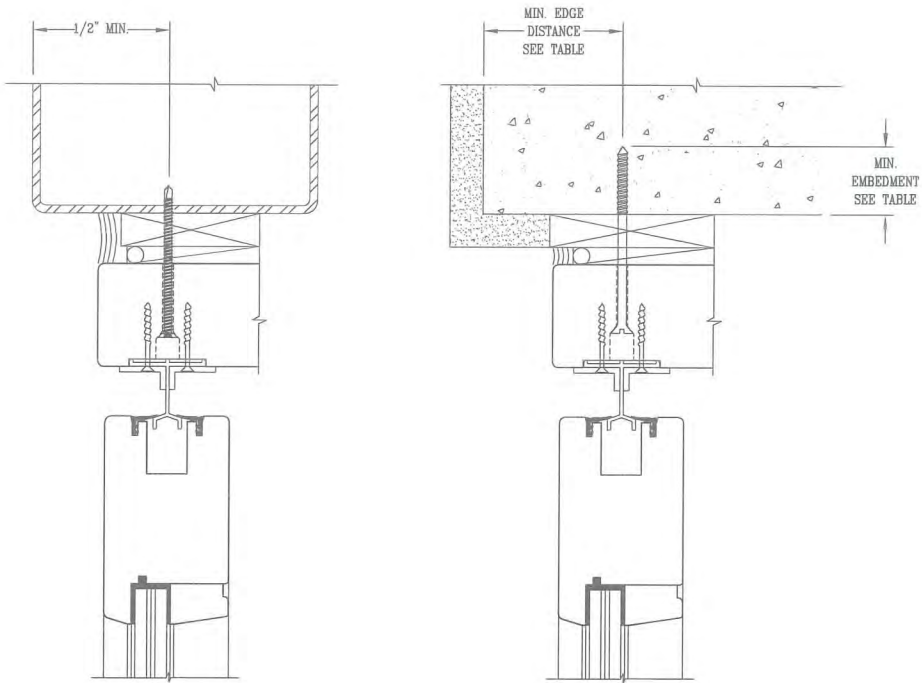
- SEE SHEET 1 FOR ANCHOR LOCATIONS AND SHEETS 3 THRU 5 FOR SECTION VIEWS WITH ADDITIONAL DETAILS CONCERNING LOCATION "A" AND LOCATION "B" REQUIREMENTS.
- A MINIMUM CENTER-TO-CENTER SPACING OF 3" SHALL BE MAINTAINED BETWEEN ALL CONCRETE OR CMU ANCHORS IN ANY DIRECTION. THE SPACING AS INDICATED IN THE ELEVATION ON SHEET 1 SHALL BE REDUCED AS NEEDED TO ENSURE THAT THE 3" MINIMUM SPACING IS MAINTAINED BETWEEN LOCATION "A" AND LOCATION "B" ANCHORS.
- MIN. EDGE DISTANCES ARE SHOWN TO THE EXTERIOR. MIN. EDGE DISTANCES TO THE INTERIOR ARE SIMILAR.



DROPBOLT DETAIL
(MAY BE MORTISED OR SURFACE MOUNTED)



WOOD
STEEL OR ALUMINUM
CONCRETE (HEAD, SILL, OR JAMB)
OR CMU (ALLOWED AT JAMB ONLY)



STEEL OR ALUMINUM
WITH 1x WOOD BUCK
CONCRETE (HEAD, SILL, OR JAMB)
OR CMU (ALLOWED AT JAMB ONLY)
WITH 1x WOOD BUCK

TYPICAL ANCHOR CONDITIONS

DATE: 09/26/2013

DATE	6/15/15
REVISION DESCRIPTION	UPDATED TO 2014 FBC
NO.	2

WOOD EUROPEAN SERIES GLAZED LIFT AND SLIDE DOORS (MERBAU)

LUXBAUM, LLC
WINDOWS + DOORS

2400 CENTREPARK WEST DR, SUITE 150
WEST PALM BEACH, FL 33409

Ph: (561) 684-1500
www.luxbaum.com

SCOTT WOLTERS
FL PE# 62354

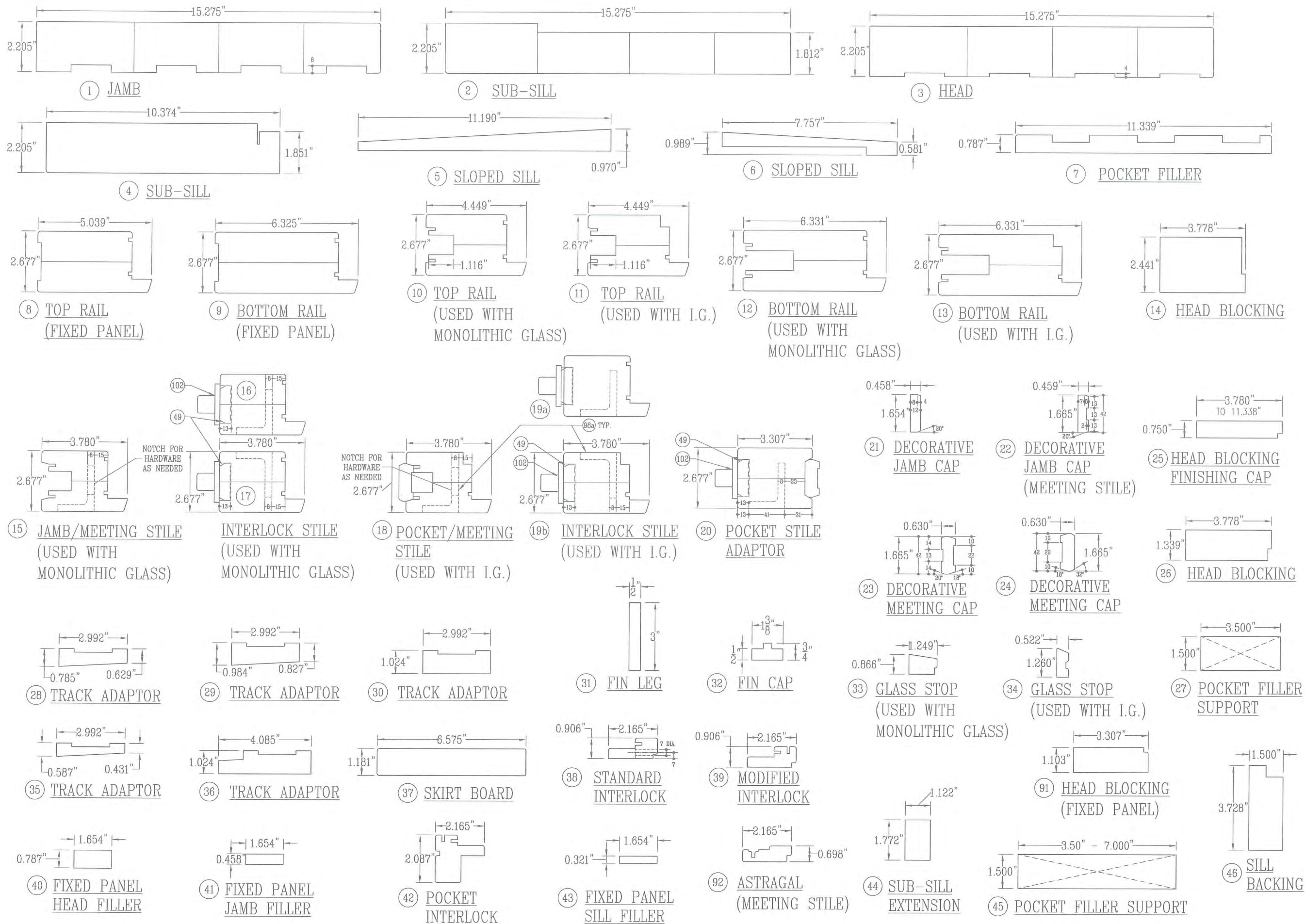
WOLTERS ENGINEERING
(COA# 27194)
15211 97TH ROAD N
WEST PALM BEACH, FL 33412

DEC 15 2017

PROFESSIONAL ENGINEER

DRAWING NO.
LIFT&SLIDE

SHEET NO.
7 OF 12



DATE: 09/26/2013

DATE: 6/15/15

REVISION DESCRIPTION: UPDATED TO 2014 FBC

NO. 2

WOOD EUROPEAN SERIES GLAZED LIFT AND SLIDE DOORS (MERBAU)

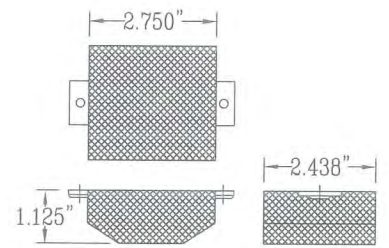
LUXBAUM, LLC
WINDOWS + DOORS

Ph: (561) 684-1500
www.luxbaum.com
2400 CENTREPARK WEST DR, SUITE 150
WEST PALM BEACH, FL 33409

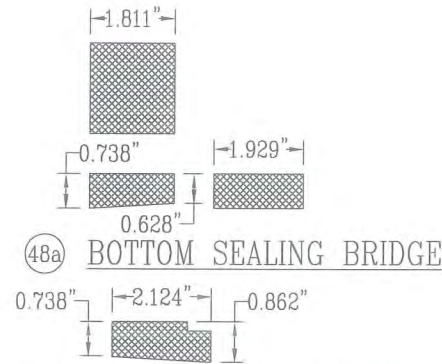


DRAWING NO. LIFT&SLIDE

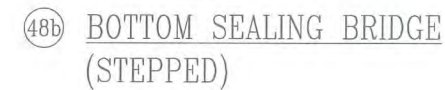
SHEET NO. 8 OF 12



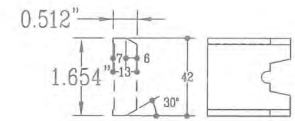
47 TOP SEALING BRIDGE



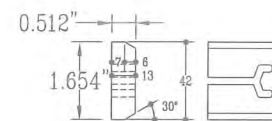
48a BOTTOM SEALING BRIDGE



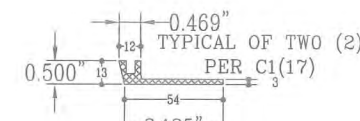
48b BOTTOM SEALING BRIDGE (STEPPED)



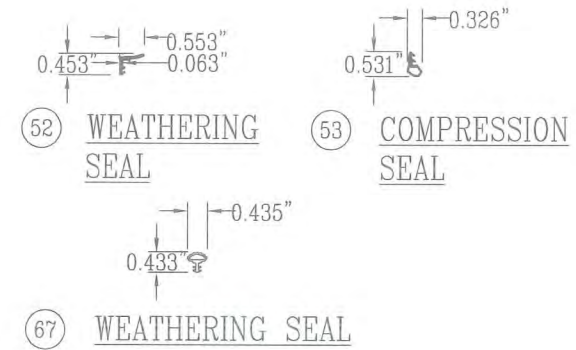
49 RUBBER PAD (BOTTOM)



50 RUBBER PAD (TOP)



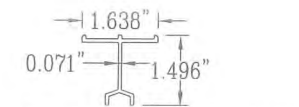
51 C1 BOTTOM SEALING PAD



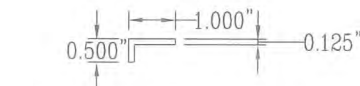
52 WEATHERING SEAL

53 COMPRESSION SEAL

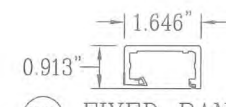
67 WEATHERING SEAL



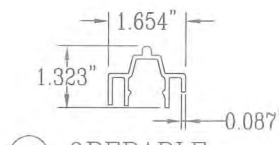
54 TOP GUIDE RAIL



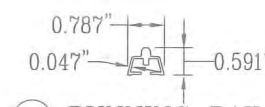
55 TOP GUIDE RAIL REINFORCEMENT



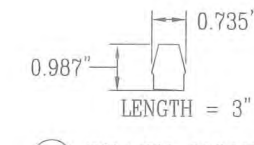
56 FIXED PANEL TRACK



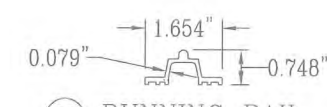
57 OPERABLE PANEL TRACK



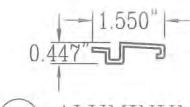
58 RUNNING RAIL (SNAP-ON TRACK)



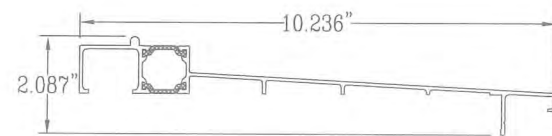
59 TRACK MOUNT



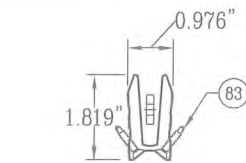
60 RUNNING RAIL (SCREW-IN TRACK)



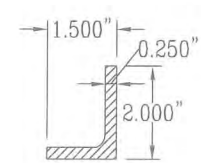
61 ALUMINUM SILL EXTENSION



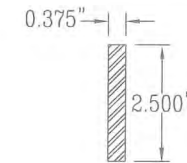
62 ALUMINUM THRESHOLD



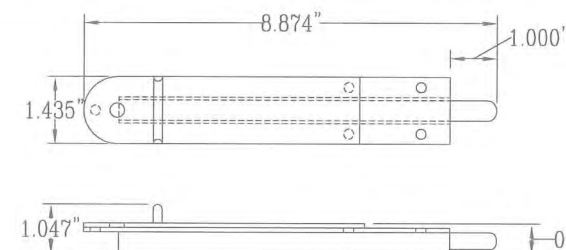
63 CARRIAGE BRIDGE BLOCK



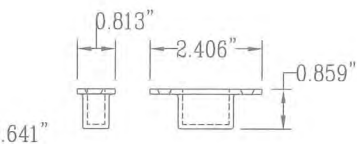
98a STEEL ANGLE (SASH REINF.)



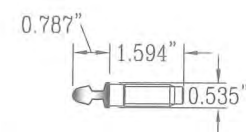
98b STEEL FLATBAR (FIN REINF.)



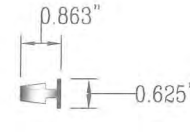
99 DROP BOLT (MEETING STILE ONLY)



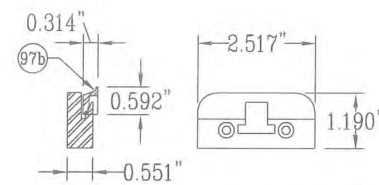
100 DROP BOLT CUP



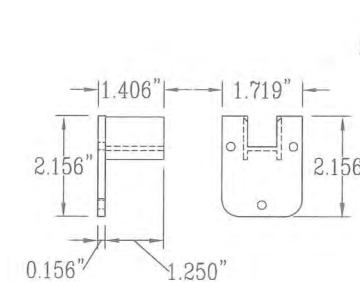
95 LOCKING BOLT (JAMB STILE)



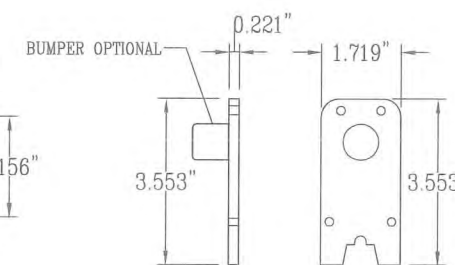
96 LOCKING BOLT (MEETING STILE)



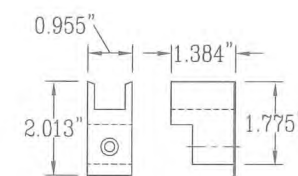
97a INTERLOCK PLATES



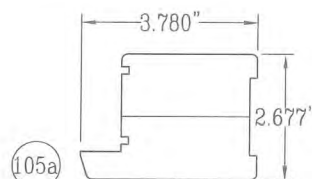
101 UPPER CAP BUMPER (END)



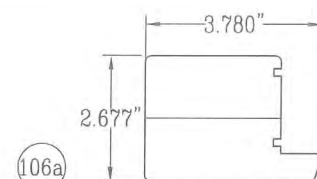
102 LOWER CAP BUMPER (END)



103 UPPER GEAR CAP (MEETING STILE)



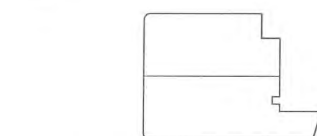
105a



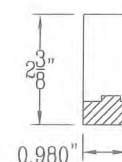
106a



105b FIXED JAMB STILE (USED WITH MONOLITHIC AND I.G. GLASS)



106b FIXED INTERLOCK STILE (USED WITH MONOLITHIC AND I.G. GLASS)



107 MERBAU FIN

DATE: 09/26/2013

NO.	REVISION DESCRIPTION	DATE
1	PART 107 ADDED	2/28/14
2	UPDATED TO 2014 FBC	6/15/15

WOOD EUROPEAN SERIES GLAZED LIFT AND SLIDE DOORS (MERBAU)

LUXBAUM, LLC
WINDOWS + DOORS

2400 CENTREPARK WEST DR, SUITE 150
WEST PALM BEACH, FL 33409

Ph: (561) 684-1500
www.luxbaum.com



DRAWING NO.
LIFT&SLIDE

SHEET NO.
9 OF 12

ITEM	ITEM DESCRIPTION	NOTES
PARTS		
1	JAMB	MERBAU
2	SUB-SILL	MERBAU
3	HEADER	MERBAU
4	SUB-SILL	MERBAU
5	SLOPPED SILL	MERBAU
6	SLOPPED SILL	MERBAU
7	POCKET FILLER	MERBAU
8	TOP RAIL (FIXED PANEL)	MERBAU
9	BOTTOM RAIL (FIXED PANEL)	MERBAU
10	TOP RAIL (MONOLITHIC GLASS)	MERBAU
11	TOP RAIL (I.G. GLASS)	MERBAU
12	BOTTOM RAIL (MONOLITHIC GLASS)	MERBAU
13	BOTTOM RAIL (I.G. GLASS)	MERBAU
14	HEAD BLOCKING	MERBAU
15	JAMB/MEETING STILE	MERBAU
16	INTERLOCK STILE	MERBAU
17	INTERLOCK STILE	MERBAU
18	POCKET MEETING STILE	MERBAU
19	INTERLOCK STILE	MERBAU
20	POCKET STILE	MERBAU
21	DECORATIVE STILE CAP	MERBAU
22	DECORATIVE JAMB CAP	MERBAU
23	DECORATIVE MEETING CAP	MERBAU
24	DECORATIVE MEETING CAP	MERBAU
25	HEAD BLOCKING FINISHING CAP	MERBAU
26	HEAD BLOCKING	MERBAU
27	POCKET FILLER SUPPORT	WOOD
28	TRACK ADAPTOR	MERBAU
29	TRACK ADAPTOR	MERBAU
30	TRACK ADAPTOR	MERBAU
31	FIN LEG	MERBAU
32	FIN CAP	MERBAU
33	GLASS STOP (MONOLITHIC GLASS)	MERBAU
34	GLASS STOP (I.G. GLASS)	MERBAU
35	TRACK ADAPTOR	MERBAU
36	TRACK ADAPTOR	MERBAU
37	SKIRT BOARD	MERBAU
38	STANDARD INTERLOCK	MERBAU
39	MODIFIED INTERLOCK	MERBAU
40	FIXED PANEL HEAD FILLER	MERBAU
41	FIXED PANEL JAMB FILLER	MERBAU
42	POCKET INTERLOCK	MERBAU
43	FIXED PANEL SILL FILLER	MERBAU
44	SUB-SILL EXTENSION	MERBAU
45	POCKET FILLER SUPPORT	WOOD
46	SILL BACKING	MERBAU
91	HEAD BLOCKING (FIXED PANEL)	MERBAU
92	ASTRAGAL (MEETING STILE)	MERBAU
105a	FIXED JAMB STILE (MONOLITHIC GLASS)	MERBAU
105b	FIXED JAMB STILE (I.G. GLASS)	MERBAU
106a	FIXED INTERLOCK STILE (MONO. GLASS)	MERBAU
106b	FIXED INTERLOCK STILE (I.G. GLASS)	MERBAU
107	MERBAU FIN	MERBAU

ITEM	ITEM DESCRIPTION	MANUFACTURER/NOTES
HARDWARE		
54	TOP GUIDE RAIL	BY: SIEGENIA – PART#: HH0130-03 – 6063-T5 ALUMINUM
55	TOP GUIDE RAIL REINFORCEMENT	BY: SIEGENIA – SUPPLIED WITH LIFT/LOCKING HARDWARE
56	FIXED PANEL TRACK	ALUMINUM PART#: HH132-02
57	OPERABLE PANEL TRACK	ALUMINUM PART#: HH0131
58	RUNNING RAIL (SNAP-ON TRACK)	BY: SIEGENIA – PART#: HH0131-04 – 6061-T6 ALUMINUM
59	TRACK MOUNT	ALUMINUM PART#: 821442
60	RUNNING RAIL (SCREW-IN TRACK)	BY: SIEGENIA – PART#: HH0131-01 – 6061-T6 ALUMINUM
61	ALUMINUM SILL EXTENSION	ALUMINUM PART#: PPVB0060
62	ALUMINUM THRESHOLD	BY: SIEGENIA – 6061 – T6 – ALUMINUM
63	CARRIAGE BRIDGE BLOCK, BETWEEN BOGIES	BY: SIEGENIA – SUPPLIED WITH LIFT/LOCKING HARDWARE
94	LIFT/LOCKING HARDWARE / BOGIES	BY: SIEGENIA – PART#: PGKB0430
95	LOCK BOLT (USED AT JAMB STILE)	BY: SIEGENIA – SUPPLIED WITH LIFT/LOCKING HARDWARE
96	LOCK BOLT (USED AT MEETING STILE)	BY: SIEGENIA – SUPPLIED WITH LIFT/LOCKING HARDWARE
97a/b	INTERLOCK PLATES (SUPPLIED TOGETHER)	BY: SIEGENIA – PART#: PMZB0150-200010
98a	1½" x 2" x ¼" STEEL ANGLE	STEEL ANGLE – GRADE A36 – SEE SHT. 1 FOR LENGTH
98b	⅜" x 2½" STEEL FLATBAR	STEEL FLAT BAR – GRADE A36 – SEE SHT. 1 FOR LENGTH
99	DROP BOLT	BY: CENTOR – PART#: DBSY200NR
100	DROP BOLT CUP	BY: CENTOR – PART#: DBC
101	UPPER CAP BUMPER (END)	BY: SIEGENIA – PART #
102	LOWER CAP BUMPER (END)	BY: SIEGENIA – PART #
103	UPPER GEAR CAP (MEETING STILE)	BY: SIEGENIA – PART #
104	HANDLE	AS REQUIRED TO OPERATE HARDWARE
SEALS AND SEALANTS		
47	TOP SEALING BRIDGE	BY: SIEGENIA – PART #PDIB0100 – DUROMETER 10-12
48a	BOTTOM SEALING BRIDGE	BY: SIEGENIA – PART #PDIB0010_2D – DUROMETER 30
48b	BOTTOM SEALING BRIDGE (STEPPED PAD)	BY: SIEGENIA – PART #PDIB0010_2D – DUROMETER 30
49	RUBBER BUMPER (BOTTOM)	BY: SIEGENIA – PART #PDIB0110-023010
50	RUBBER BUMPER (TOP)	BY: SIEGENIA – PART #PDIB0070-0F8010
51	BOTTOM SEALING PAD (C1)	BY: SIEGENIA – PART #PDIB0010-099011
52	WEATHERING SEAL	BY: SIEGENIA – PART #PDPB0100 – DUROMETER 65
53	COMPRESSION SEAL	BY: SIEGENIA – PART #PDPB0030 – DUROMETER 65
64	15 LM POLYURETHANE SEALANT	BY: SIKA
65	WOOD GLUE	BY: GORILLA GLUE
66	DOW 995 (GLAZING BEAD)	BY: DOW CORNING (3 SIDES OF GLAZING POCKET)
67	WEATHERING SEAL	BY: DEVENTER S-6890
110	1/8"x1/2"x4" SETTING BLOCK, 2 per DLO	NEOPRENE (70-90 SHORE A DURAMETER HARDNESS)
111	1/8"x1 1/8"x4" SETTING BLOCK, 2 per DLO	NEOPRENE (70-90 SHORE A DURAMETER HARDNESS)

ITEM	ITEM DESCRIPTION	MANUFACTURER/NOTES
MISC. FASTENERS		
68	NO. 12 X 2 1/2" SS WOOD SCREW	WITHIN 6" OF ENDS & 12" O.C.
69	NO. 14 X 3" SS WOOD SCREW	WITHIN 6" OF ENDS & 16" O.C. (HEAD BLOCKING)
70	4mm X 40mm SS WOOD SCREW	WITHIN 2" OF ENDS & 12" O.C.
71	NO. 6 X 1 1/2" SS WOOD SCREW	WITHIN 6" OF ENDS & 12" O.C. (2 ROWS)
72	NO. 12 X 2 1/2" SS WOOD SCREW	WITHIN 2" OF ENDS & 15 3/4" O.C.
73	23 GAGE BRAD NAIL	2" FROM CORNERS & 8" O.C.
74	NO. 6 X 1 1/2" SS WOOD SCREW	WITHIN 6" OF ENDS & 12" O.C. (2 ROWS)
75	NO. 8 X 2 1/2" SS WOOD SCREW	1 PER LOCK BOLT/GEAR
76	NO. 10 X 1 1/2" SS WOOD SCREW	WITHIN 6" OF ENDS & 16" O.C.
77	NO. 12 X 6" SS WOOD SCREW	WITHIN 6" OF ENDS & 12" O.C.
78	NO. 10 X 1 1/2" SS WOOD SCREW	WITHIN 2" OF ENDS & 12" O.C.
79	NO. 10 X 2 1/2" SS WOOD SCREW	2 PER ITEM #59 / WITHIN 6" OF ENDS & 12" O.C.
80	NO. 18 X 1 1/4" SS WOOD SCREW	WITHIN 6" OF ENDS & 16" O.C.
81	4mm X 40mm SS WOOD SCREW	INSTALL PER DROPBOLT DETAIL SHT. 15
82	4mm X 20mm SS WOOD SCREW	INSTALL PER DROPBOLT DETAIL SHT. 15
83	NO. 6 X 1 1/2" SS WOOD SCREW	2 1/2" O.C. (STAGGERED)
84	NO. 10 X 2 1/2" SS WOOD SCREW	WITHIN 6" OF ENDS & 12" O.C.
85	NO. 12 X 9" SS WOOD SCREW	WITHIN 6" OF ENDS & 12" O.C.
86	NO. 12 X 3 1/2" SS WOOD SCREW	WITHIN 6" OF ENDS & 16" O.C.
87	NO. 14 X 3" SS WOOD SCREW	1 1/2" FROM ENDS (FRAME CORNER FASTENER)
88	1/4"-8 X 6" SS WOOD SCREW	1 1/2" FROM ENDS & 2 1/2" O.C. (4 TOTAL EA. CORNER)
89	NO. 12 X 3 1/2" SS WOOD SCREW	WITHIN 6" OF ENDS & 12" O.C. (STAGGERED)
90	NO. 12 X 3 1/2" SS WOOD SCREW	WITHIN 2" OF ENDS & 12" O.C.
93	NO. 8 X 3" SS SCREW (⅜" Ø HOLE) @ FIN	WITHIN 2" OF TOP & BOTTOM & 10" O.C.
108	NO. 12 X 3 1/2" SS SCREW	1" FROM ENDS & 9" O.C.

DATE: 09/26/2013

DATE	2/26/14	6/15/15			
REVISION DESCRIPTION	PARTS 107 AND 108 ADDED	UPDATED TO 2014 FBC			
NO.	1	2			

WOOD EUROPEAN SERIES GLAZED LIFT AND SLIDE DOORS (MERBAU)



LUXBAUM, LLC
WINDOWS + DOORS



2400 CENTREPARK WEST DR, SUITE 150
WEST PALM BEACH, FL 33409

Ph: (561) 684-1500
www.luxbaum.com

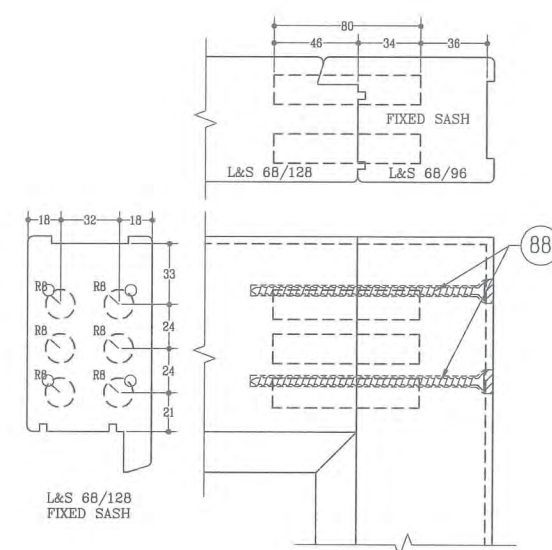
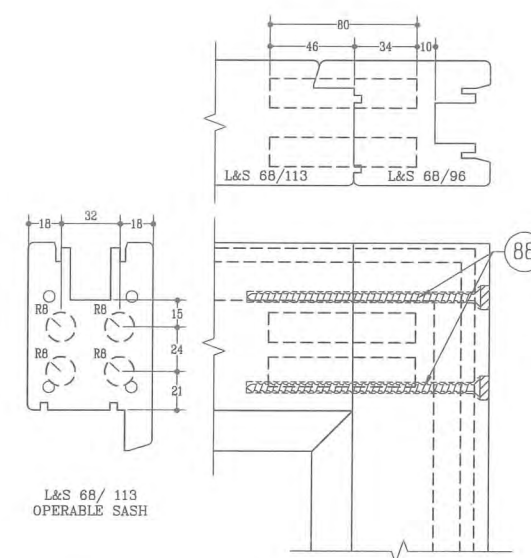
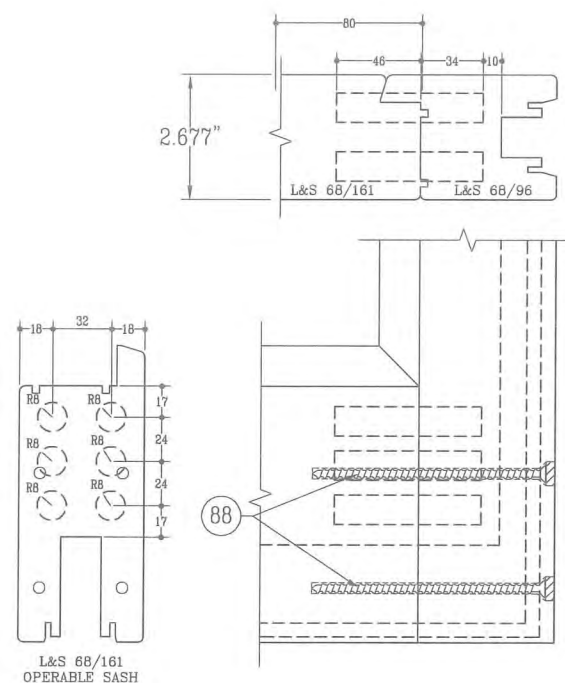
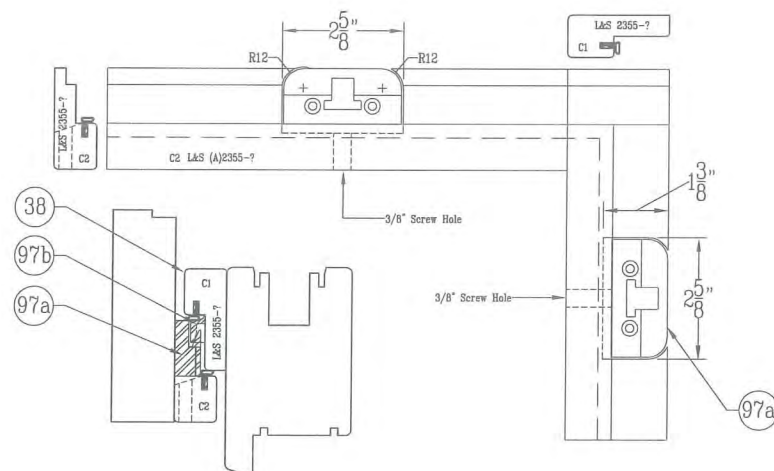
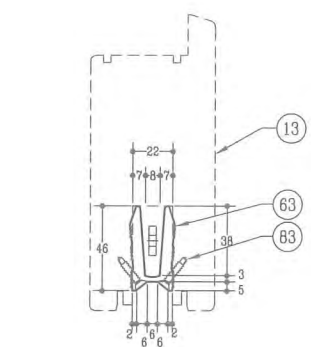
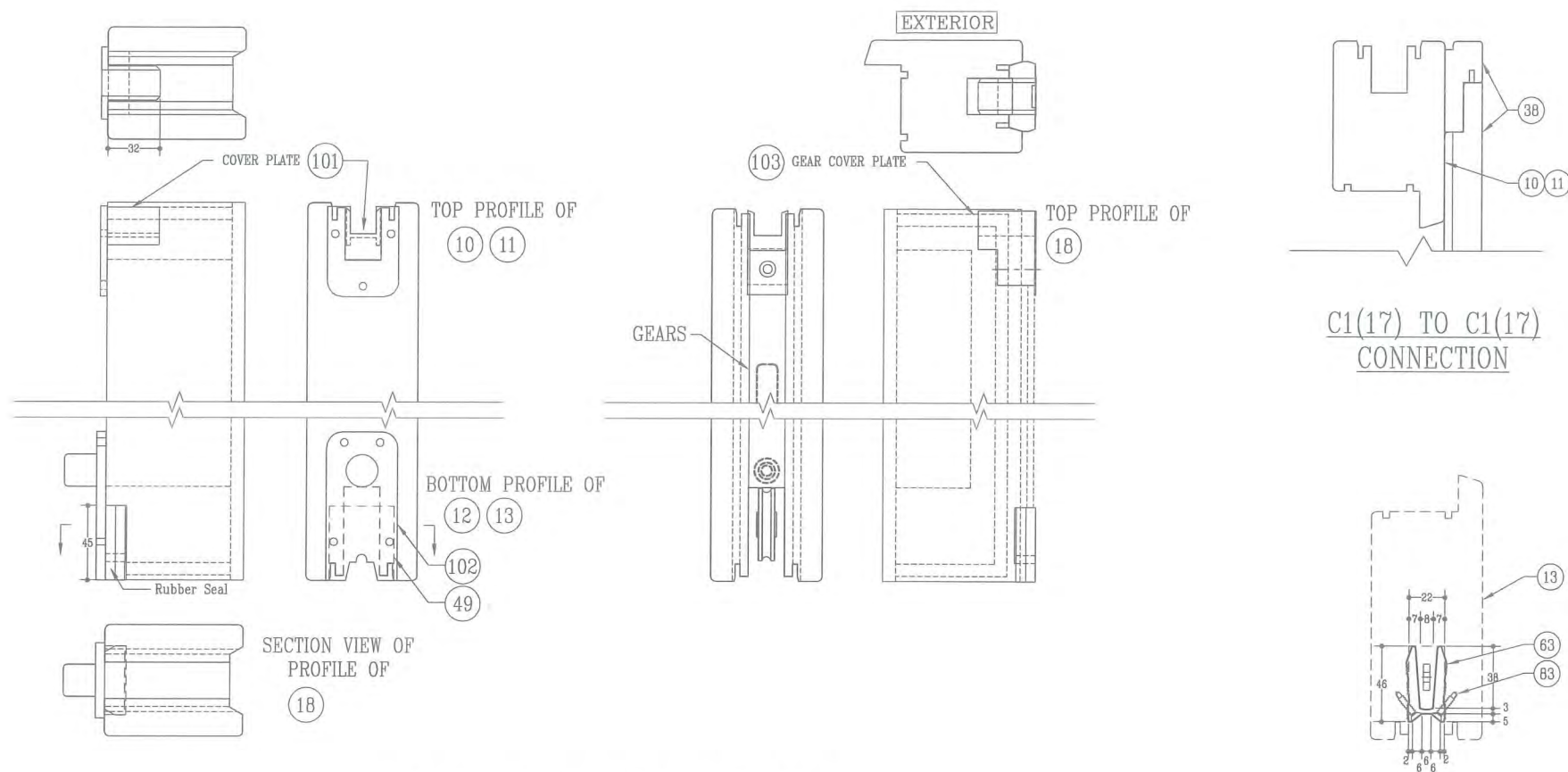


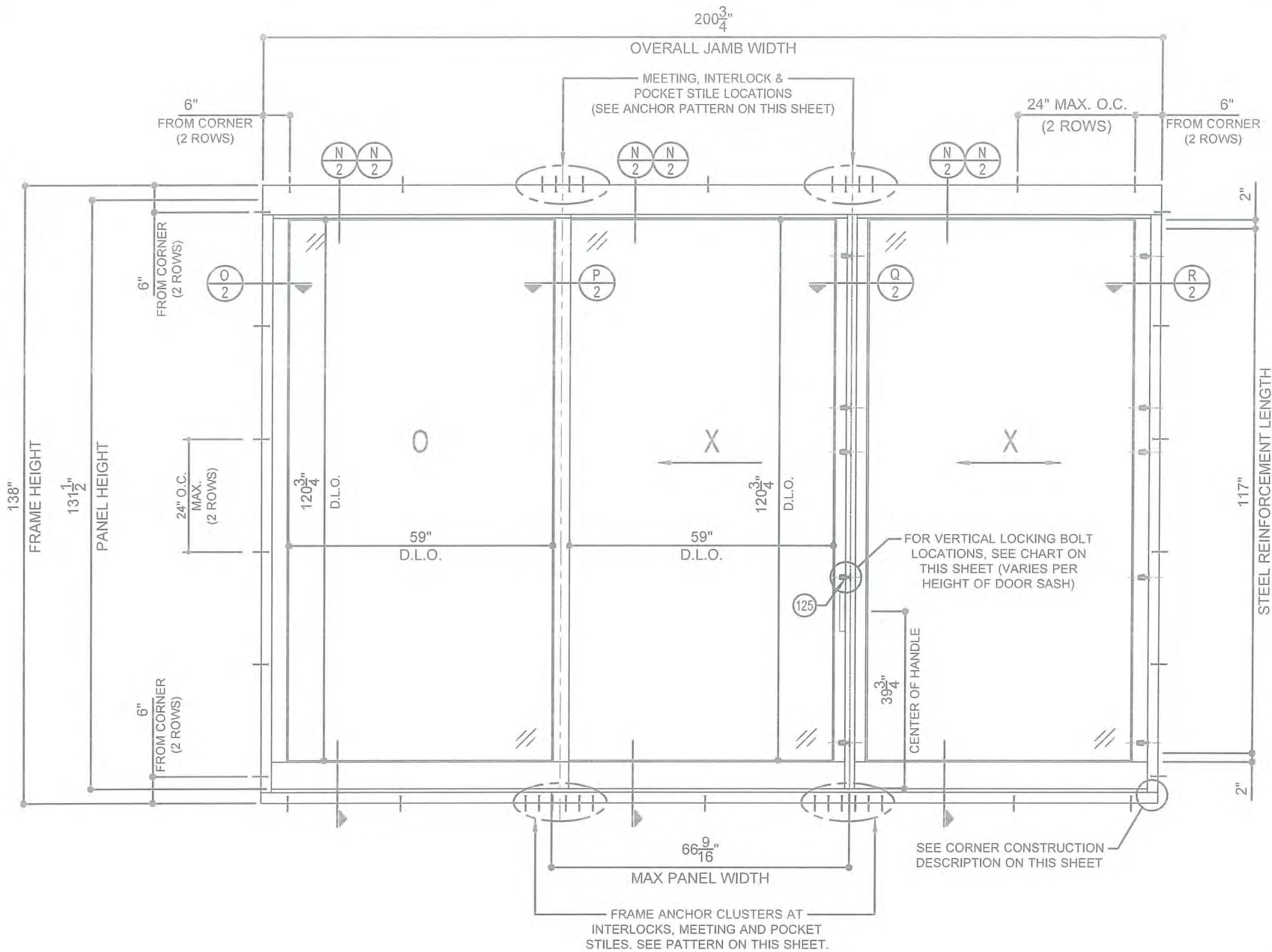
SCOTT WOLTERS
FL PE# 62354

WOLTERS ENGINEERING
(CO.# 27154)
15211 97TH ROAD N
WEST PALM BEACH, FL 33412

DRAWING NO.
LIFT&SLIDE

SHEET NO.
10 OF 12





EXTERIOR ELEVATION

(For Section Callouts Only)

(Configuration Not Limited To 3-Panel)

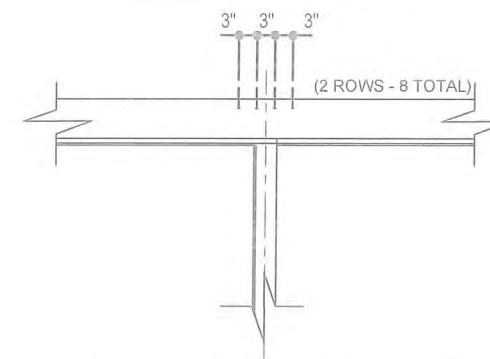
(Please See Sheet 4 For All Available Configurations)

GENERAL NOTES:

- ALLOWABLE DESIGN PRESSURE: +50/-55 PSF
- ALL GLAZING AS SHOWN IN GLAZING DETAILS ON SHEET 3, AND ALL HARDWARE TYPES IN THE HARDWARE NOTES BELOW MAY BE USED IN ANY DOOR CONFIGURATION.
- THESE DOORS HAVE BEEN DESIGNED AND TESTED TO TAS 201, 202, AND 203 PROTOCOLS IN ACCORDANCE WITH THE REQUIREMENTS OF THE 6TH EDITION 2017 FLORIDA BUILDING CODE (FBC) INCLUDING THE HVHZ PROVISIONS.
- THIS PRODUCT AS SHOWN HEREIN IS LARGE AND SMALL MISSILE IMPACT RATED, SHUTTERS ARE NOT REQUIRED.
- WOOD OR MASONRY OPENINGS, BUCKS, AND BUCK FASTENERS, BY OTHERS, SHALL BE PROPERLY DESIGNED AND INSTALLED TO TRANSFER LOADS TO THE STRUCTURE.
- ANCHOR TYPE, SIZE, SPACING, AND EMBEDMENT SHALL BE AS INDICATED IN THIS APPROVAL. ANCHOR EMBEDMENT TO SUBSTRATE SHALL BE BEYOND WALL DRESSING OR STUCCO.
- ALL FASTENERS PENETRATING INTO PRESSURE TREATED WOOD SHALL BE CAPABLE OF PREVENTING CORROSION DUE TO REACTION WITH PRESSURE TREATMENT CHEMICALS.
- DISSIMILAR MATERIALS THAT COME INTO CONTACT SHALL BE PROTECTED TO PREVENT REACTIONS IN ACCORDANCE WITH FBC CHAPTERS 20 AND 23.
- A WIND LOAD DURATION FACTOR $C_d = 1.6$ WAS USED FOR THE ANALYSIS OF WOOD SCREWS ONLY.
- THE TEAK DOORS LISTED IN THIS APPROVAL ARE CONSTRUCTED OF A NATURALLY DURABLE SPECIES (SPECIE SPECIFIC GRAVITY = $0.55 E = 1.55 \times 10^6$ PSI MIN.). OTHER NATURALLY DURABLE WOOD SPECIES OF EQUAL OR GREATER STRENGTH MAY BE SUBSTITUTED FOR ALL WOOD COMPONENTS.
- MEMBERS NOTCHED AS NEEDED TO FIT HARDWARE.

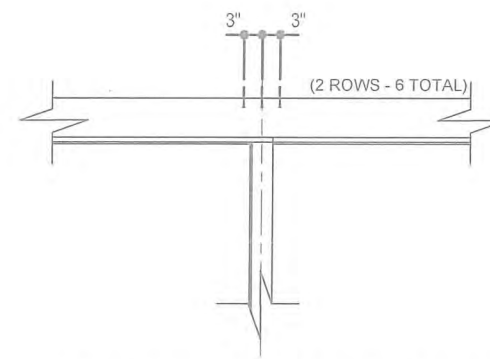
DESIGN PRESSURE
(+50/-55)

FRAME ANCHOR CLUSTER PATTERNS



WOOD - FASTENER TYPE A

(SEE SHEET 3 FOR FASTENER INFO.)



CONCRETE - FASTENER TYPE B

OR

STEEL/ALUM - FASTENER TYPE C

(SEE SHEET 3 FOR FASTENER INFO.)

LOCKING BOLT REQUIREMENTS

SASH HEIGHT	LOCKING POINTS
78" - 88 ¹⁵ / ₁₆ "	3
89" - 122 ¹⁵ / ₁₆ "	4
123" - 131 ¹ / ₂ "	5

CORNER CONSTRUCTION

JAMB CORNERS:

MEMBERS ARE OF TONGUE AND GROOVE CONSTRUCTION AND MECHANICALLY FASTENED WITH (4) NO. 14 x 3" SMS SCREWS PER CORNER, 7/8" FROM EDGE. CORNERS AND TONGUE TO GROOVE LOCATIONS ARE SEALED WITH SIKAFLEX 15 LM POLYURETHANE SEALANT.

SASH CORNERS:

TOP RAIL TO STILE CORNERS:

TOP RAILS ARE COPED, BUTTED, FULLY GLUED WITH WOOD GLUE (61) AND DOWELED WITH (4) 5/8" DIA. x 3 1/8" LONG MERBAU WOOD DOWELS.

BOTTOM RAIL TO STILE CORNERS:

BOTTOM RAILS ARE COPED, BUTTED, FULLY GLUED WITH WOOD GLUE (61) AND DOWELED WITH (6) 5/8" DIA. x 3 1/8" LONG MERBAU WOOD DOWELS.

DATE: 12/12/2017

DATE

REVISION DESCRIPTION

NO.

WOOD EUROPEAN SERIES GLAZED LIFT AND SLIDE DOORS (TEAK)

LUXBAUM, LLC
WINDOWS + DOORS

1501 NORTHPOINT PARKWAY, SUITE 101
WEST PALM BEACH, FL 33407
Ph: (561) 684-1500
www.luxbaum.com

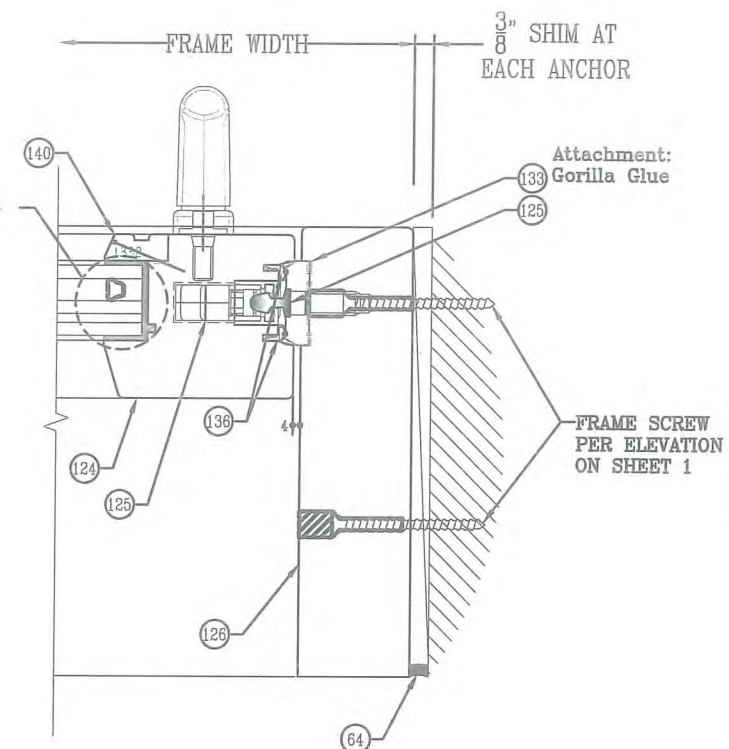
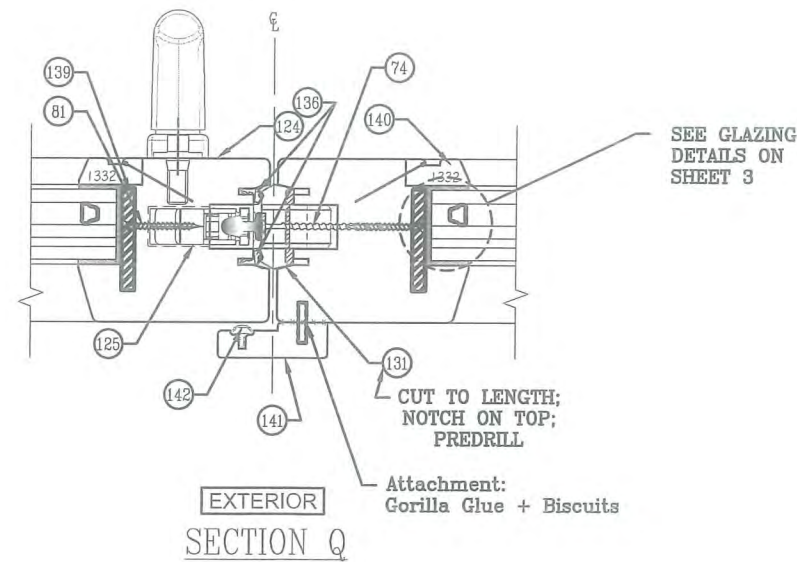
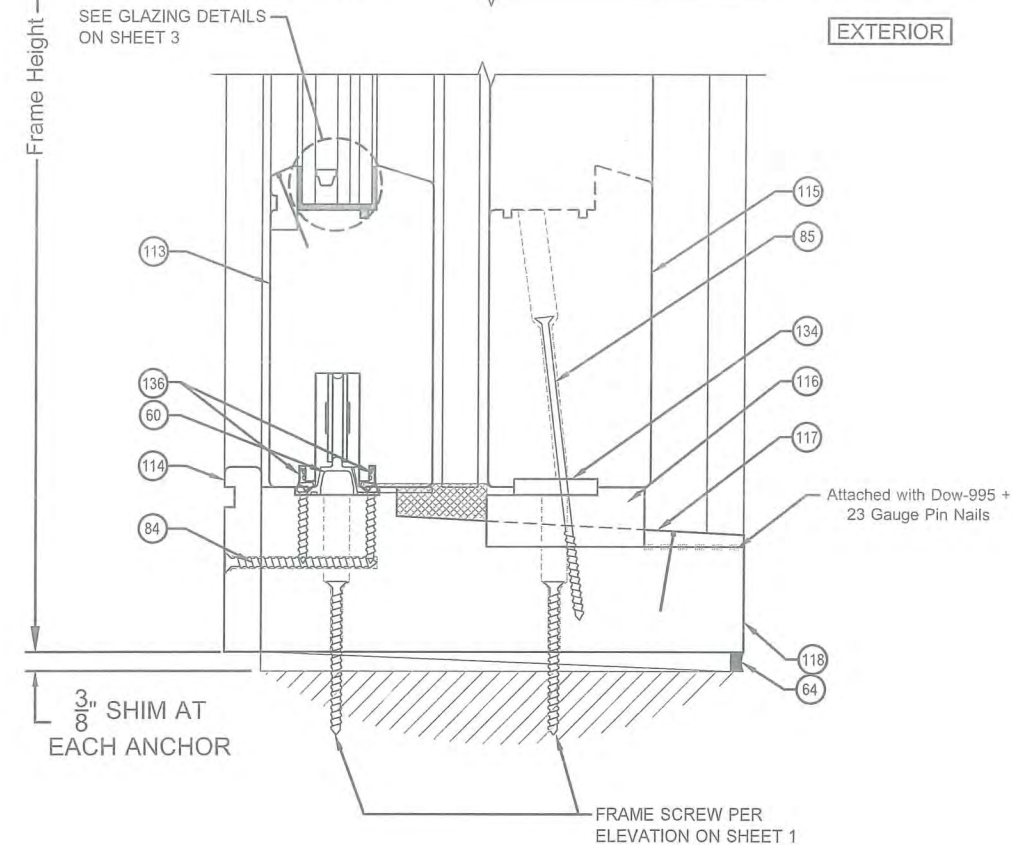
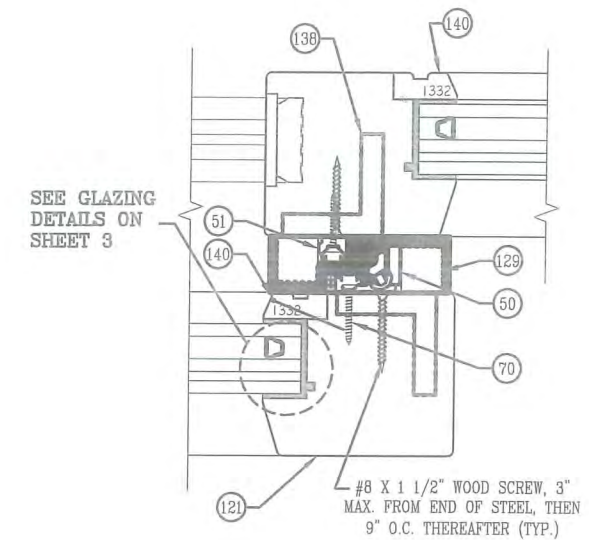
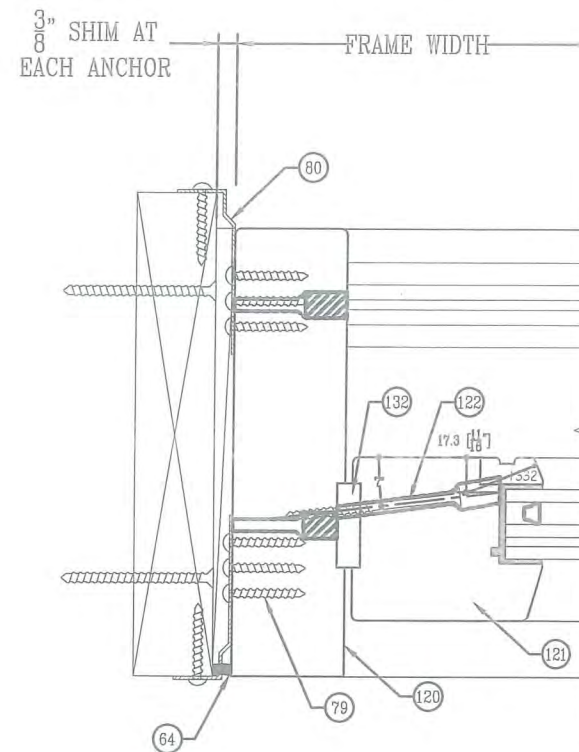
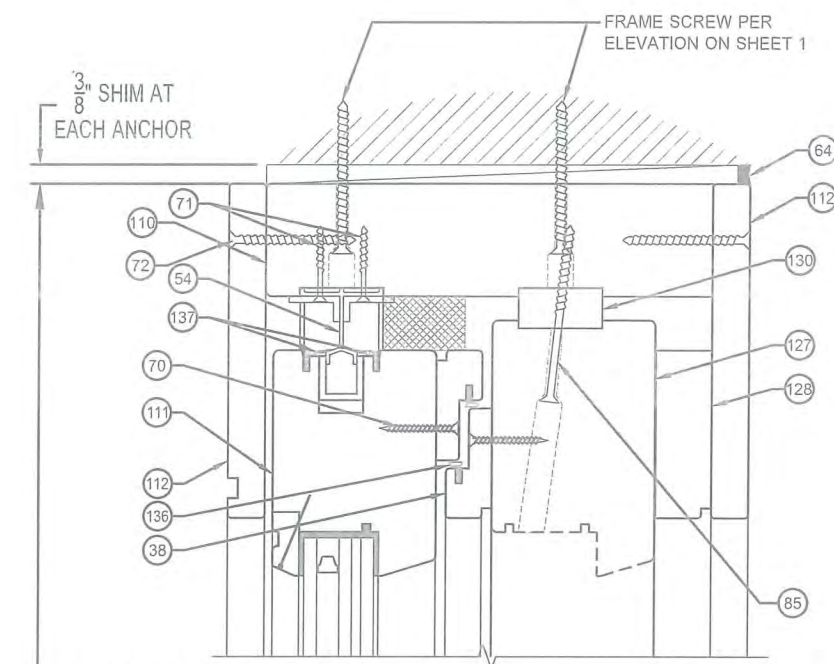


SCOTT WALTERS
FL PE# 62534

WALTERS ENGINEERING
(CO.# 27194)
15211 97TH ROAD N
WEST PALM BEACH, FL 33412

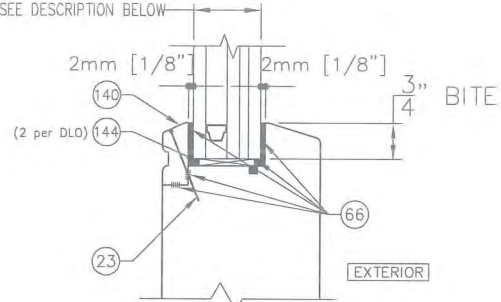
DRAWING NO.
LIFT & SLIDE - TEAK

SHEET NO.
1 OF 5



SEAL: 		DATE: 12/12/2017	
SCOTT WOLTERS FL PE# 62354		WOOD EUROPEAN SERIES GLAZED LIFT AND SLIDE DOORS (TEAK)	
WOLTERS ENGINEERING (COA# 27184) 15211 97TH ROAD N WEST PALM BEACH, FL 33412		NO. _____ REVISION DESCRIPTION _____ DATE _____	
		LUXBAUM , LLC WINDOWS + DOORS	
1501 NORTHPOINT PARKWAY, SUITE 101 WEST PALM BEACH, FL 33407 Ph: (561) 684-1500 www.luxbaum.com			
DRAWING NO. LIFT & SLIDE - TEAK			
SHEET NO. 2 OF 5			

GLAZING DETAILS



TYPICAL I.G. GLAZING DETAIL

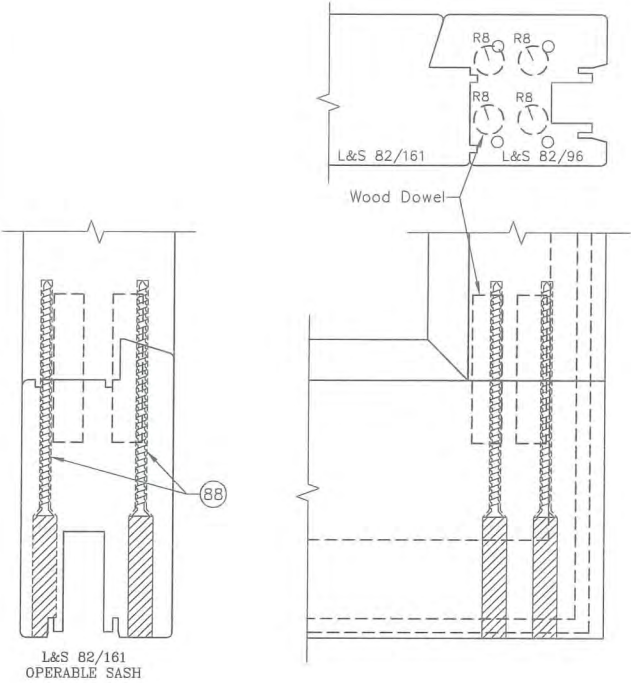
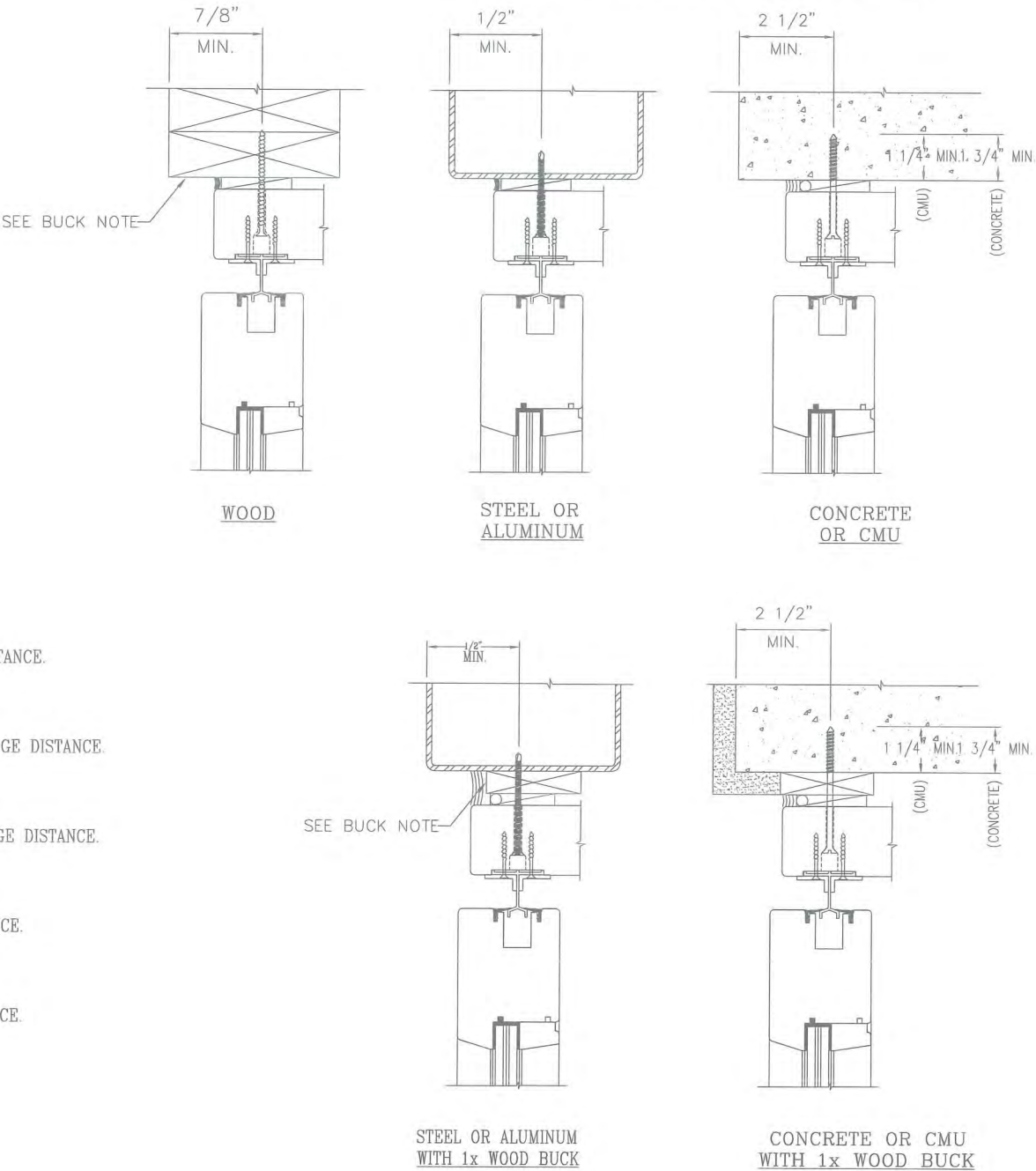
GLASS TYPE "B"; 1 3/8" LAMINATED I.G. WITH 1/4" ANNEALED+0.180 SGP+1/4" ANNEALED+7/16" AIR SPACE W/ALUM. SPACER (BLACK)+1/4" TEMPERED.

TYPICAL ANCHORS

- TYPE A**
- WOOD (2x6 MIN. TYPICALLY) - #12 FH WOOD OR SHEET METAL SCREW WITH 1 1/4" MIN. EMBEDMENT AND 7/8" EDGE DISTANCE.
- TYPE B**
- CONCRETE (3000 PSI MIN) - 1/4" DIA. FH ITW TAPCON OR ELCO ULTRACON WITH 1 3/4" MIN. EMBEDMENT AND 2 1/2" MIN. EDGE DISTANCE.
- CMU (ASTM C90 MIN) - 1/4" DIA. FH ITW TAPCON OR ELCO ULTRACON WITH 1 1/4" MIN. EMBEDMENT AND 2 1/2" MIN. EDGE DISTANCE.
- TYPE C**
- STEEL (16 Ga. 33 KSI MIN) - #12 FH F-TYPE (GR. 5) THREAD FORMING SCREW WITH FULL EMBEDMENT AND 1/2" MIN. EDGE DISTANCE.
- ALUMINUM (1/8" MIN, 6063-T5) - #12 FH F-TYPE (GR.5) THREAD FORMING SCREW WITH FULL EMBEDMENT AND 1/2" MIN. EDGE DISTANCE.

1x OR 2x WOOD BUCKS MUST BE PROPERLY ATTACHED TO SUBSTRATE, AND MUST TRANSFER LOADS IMPOSED BY GLAZING SYSTEM TO THE BUILDING STRUCTURE.

TYPICAL ANCHOR CONDITIONS



BOTTOM RAIL TO STILE JOINERY

DATE: 12/12/2017

DATE

REVISION DESCRIPTION

NO.

EUROPEAN SERIES GLAZED WOOD LIFT AND SLIDE DOORS (TEAK)

LUXBAUM, LLC
WINDOWS + DOORS



1501 NORTHPOINT PARKWAY, SUITE 101
WEST PALM BEACH, FL 33407
Ph: (561) 684-1500
www.luxbaum.com

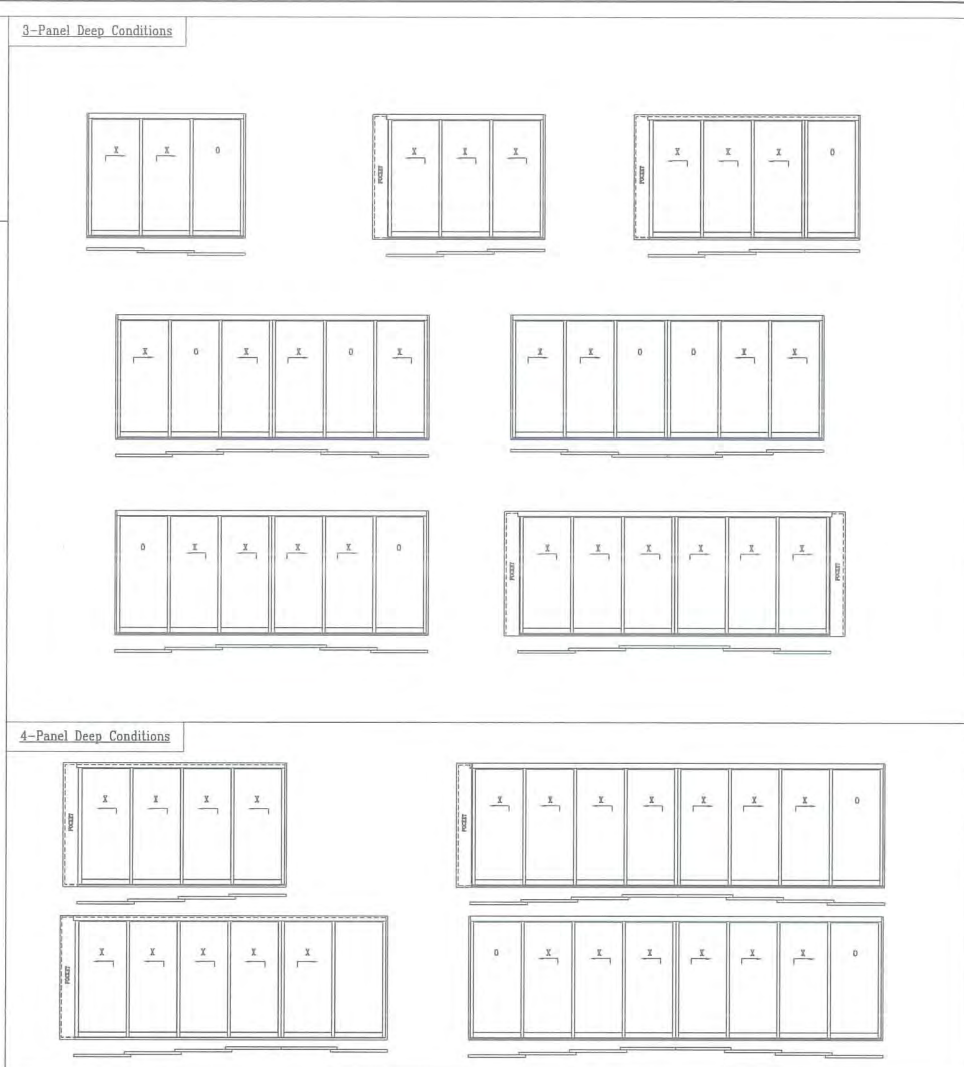



SCOTT WOLTERS
FL PE# 62354

WOLTERS ENGINEERING
(CO.# 27194)
15211 87TH ROAD N
WEST PALM BEACH, FL 33412

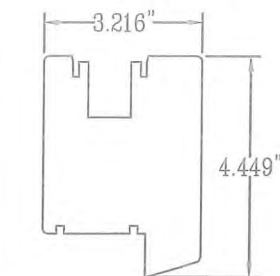
DRAWING NO.
LIFT & SLIDE - TEAK

SHEET NO.
3 OF 5

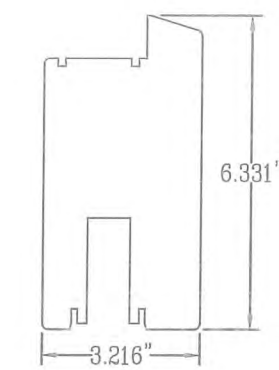


SEALED:  354

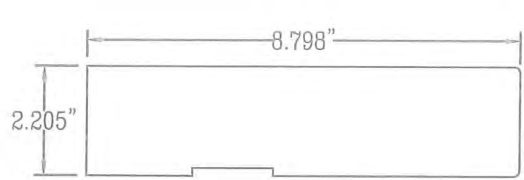
DATE:		12/12/2017	
	NO.	REVISION DESCRIPTION	DATE
EUROPEAN SERIES GLAZED WOOD LIFT AND SLIDE DOORS (TEAK)			
 <p>LUXBAUM^{LLC} WINDOWS + DOORS</p> <p>1501 NORTHPOINT PARKWAY, SUITE 101 WEST PALM BEACH, FL 33407</p> <p>Ph: (561) 684-1500 www.luxbaum.com</p>			
<div style="display: flex; justify-content: space-between;"> <div> <p>SCOTT WOLTERS FL PE# 02354</p> <p>WOLTERS ENGINEERING (COA# 27194) 15211 97TH ROAD N WEST PALM BEACH, FL 33412</p> </div> <div> <p>SEAL: SCOTT WOLTERS 354</p> <p>STATE OF FLORIDA</p> <p>PROFESSIONAL ENGINEER</p> <p>DEC 15 2017</p> </div> </div>			
DRAWING NO.			
LIFT & SLIDE - TEAK			
SHEET NO.			
4 OF 5			



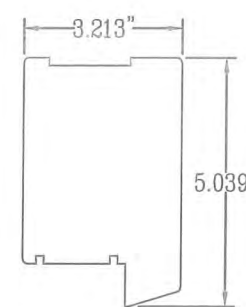
111 Header Rail



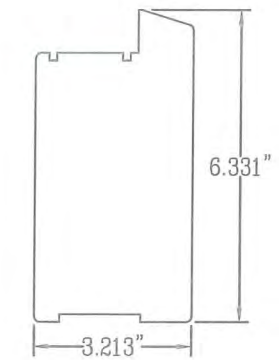
113 Sill Rail



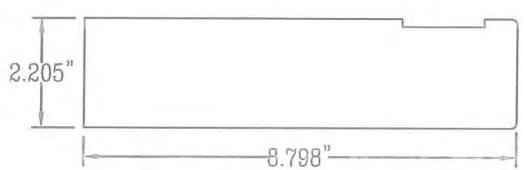
120 Jamb Stile (Fixed)



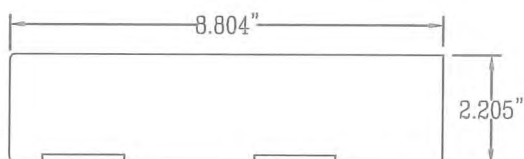
127 Fixed Header Rail



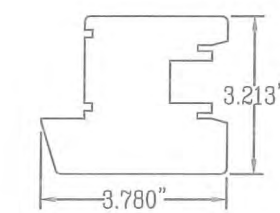
115 Fixed Sill Rail



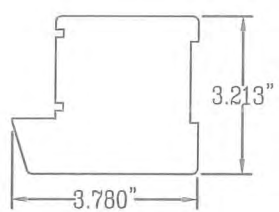
126 Jamb Stile (Meeting)



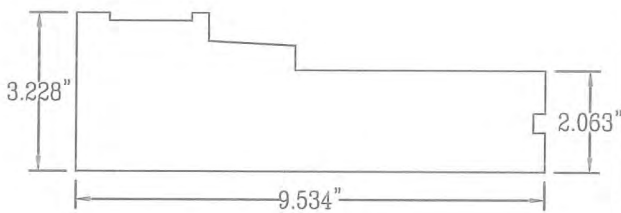
110 Jamb Header



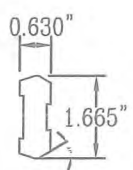
124 Meeting Stile



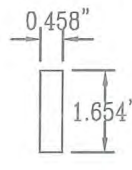
121 Fixed Stile



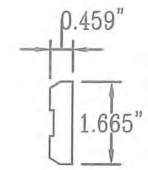
118 Jamb Sill



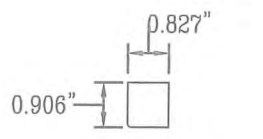
131 Meeting Component



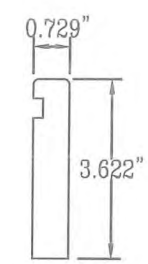
132 Meeting Component



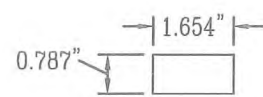
133 Meeting Component



129 Interlock Component



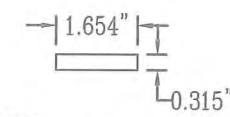
114 Sill Jamb Cover Board



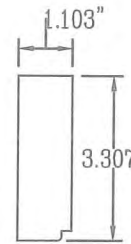
130 Fixed Rail Blocking



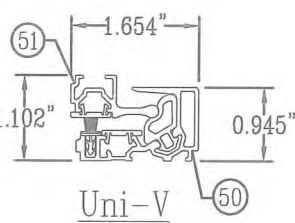
116 Fixed Rail Sill Blocking



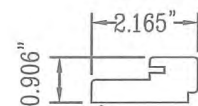
134 Fixed Rail Blocking



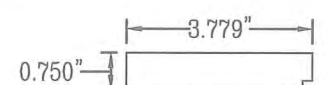
128 Fixed Interlock



Uni-V Interlock



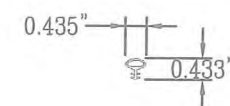
38 Standard Interlock



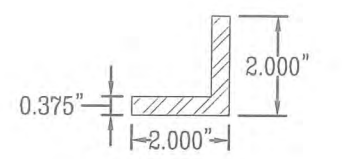
135 Head Blocking

ITEM #	ITEM DESCRIPTION	MANUFACTURER/NOTES
110	JAMB HEADER	TEAK
111	HEADER RAIL	TEAK
112	HEADER COVER BOARD	TEAK
113	SILL RAIL	TEAK
114	SILL COVER BOARD	TEAK
115	FIXED SILL RAIL	TEAK
116	FIXED TRACK ADAPTER	TEAK
117	SILL COVER BOARD	TEAK
118	JAMB SILL	TEAK
120	JAMB STILE (FIXED)	TEAK
121	FIXED STILE	TEAK
38	STANDARD INTERLOCK	TEAK
124	MEETING STILE	TEAK
126	JAMB STILE (MEETING)	TEAK
127	FIXED HEADER RAIL	TEAK
128	FIXED INTERLOCK	TEAK
129	INTERLOCK COMPONENT	TEAK
130	FIXED RAIL BLOCKING	TEAK
131	MEETING COMPONENT	TEAK
132	MEETING COMPONENT	TEAK
133	MEETING COMPONENT	TEAK
134	FIXED RAIL BLOCKING	TEAK
135	HEADER BLOCKING	TEAK
140	IG GLASS STOP	TEAK
141	ASTRAGAL	TEAK
STEEL REINFORCEMENT		
138	STEEL REINFORCEMENT	2" x 2" x 3/8" STEEL ANGLE (Length on Sheet 1)
139	STEEL REINFORCEMENT	1/4" x 2" STEEL FLATBAR (Length on Sheet 1)

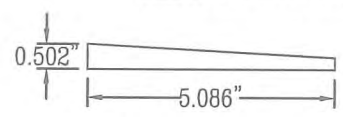
TEAK WOOD: Specific Gravity = 0.55
Modulus of Elasticity = 1.55 x 10⁶ psi



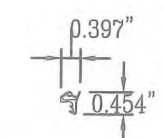
142 Astragal Weather Seal



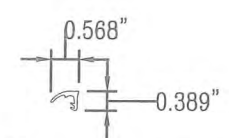
138 Steel Reinforcement



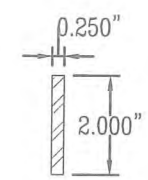
117 Sill Cover Board



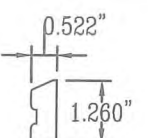
136 Compression Gasket



137 Top Weather Seal



139 Steel Reinforcement



140 I.G. Glasstop

DATE: 12/12/2017

DATE					
REVISION DESCRIPTION					
NO.					

WOOD EUROPEAN SERIES GLAZED LIFT AND SLIDE DOORS (TEAK)

LUXBAUM LLC
WINDOWS + DOORS

1501 NORTHPOINT PARKWAY, SUITE 101
WEST PALM BEACH, FL 33407
Ph: (561) 684-1500
www.luxbaum.com

