

WOLTERS ENGINEERING

ENGINEERING, DRAFTING, CONSULTING

15211 97th Road N
West Palm Beach, FL 33412
Ph/Fx: (561) 225-1982

PRODUCT EVALUATION

PRODUCT: LUXBAUM EUROPEAN SERIES WOOD FIXED CASEMENT WINDOWS

MANUFACTURER: LUXBAUM WINDOWS & DOORS
2400 CENTREPARK WEST DRIVE, SUITE 150
WEST PALM BEACH, FL 33409

To all concerned,

The Luxbaum European Series Fixed Casement Window, manufactured by Luxbaum Windows & Doors, is a glazed wood window set in a wood frame. The window has been tested per TAS 201, 202, and 203 by Hurricane Test Lab, Inc. with results shown in test reports 0271-0406.05, 0271-0519-05, and 0271-0119-03.

Technical Documentation:

1. Drawing "EURO FIXED WINDOW", signed and sealed by Scott Wolters, PE.
2. Test Reports listed above by Hurricane Test Lab, Inc. signed and sealed by Vinu Abraham, PE.
3. Supplemental calculations to support "EURO FIXED WINDOW", signed and sealed by Scott Wolters, PE.

I have reviewed this submittal per the requirements of FAC Product Approval Rule Chapter 61G20-3.005 (4). Based on the limitations listed below and those provided in the documents above, this product meets all the requirements of the 5th Edition (2014) Florida Building Code generally, and chapters 10, 11, 16, 23, and 24 specifically, including the HVHZ provisions.

Limitations: This window is approved for use inside and outside of the HVHZ. It is large and small impact resistant. Shutters are not required.

Overall Dimensions:

Maximum Frame Height:	Varies – See elevations on Sheets 1-3.
Maximum Frame Width:	Varies – See elevations on Sheets 1-3.
Maximum Design Pressure:	See Design Pressure Table on Sheet 2 And elevations on Sheets 2-3.

Glazing Options:

9/16" Monolithic Laminated

1/4" Annealed

0.100" Saf-Glas Interlayer⁺

1/4" Annealed

9/16" Monolithic Laminated

1/4" Heat Strengthened

0.100" Saf-Glas Interlayer⁺

1/4" Heat Strengthened

9/16" Monolithic Laminated

1/4" Annealed

0.090" SGP Interlayer⁺⁺

1/4" Annealed

1 1/8" Insulated Laminated

3/16" Heat Strengthened

0.090" SGP Interlayer⁺⁺

3/16" Heat Strengthened

1/2" Air Space

3/16" Tempered

5/8" (min) CDX Plywood

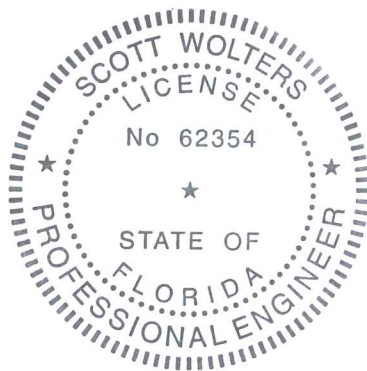
⁺ I have evaluated the Saf-Glas interlayer (NOA# 13-1102.10) referenced above and find that it complies with the requirements of the 5th Edition (2014) Florida Building Code for use in this product.

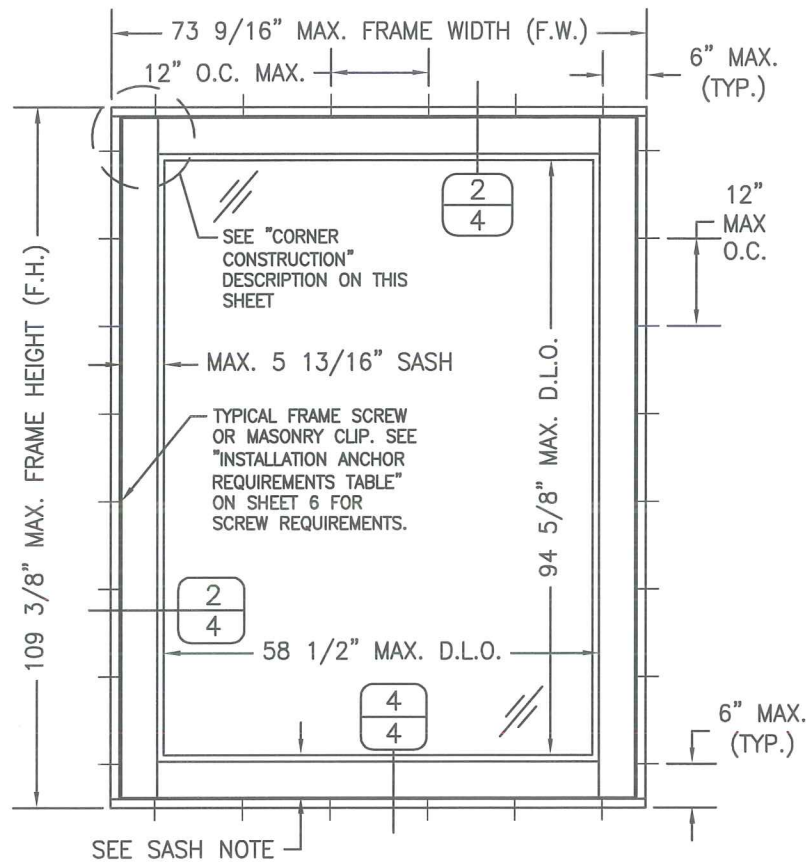
⁺⁺ I have evaluated the SentryGlas interlayer (NOA# 11-0624.02) referenced above and find that it complies with the requirements of the 5th Edition (2014) Florida Building Code for use in this product.

If you have any questions or need more information concerning this approval please contact me.

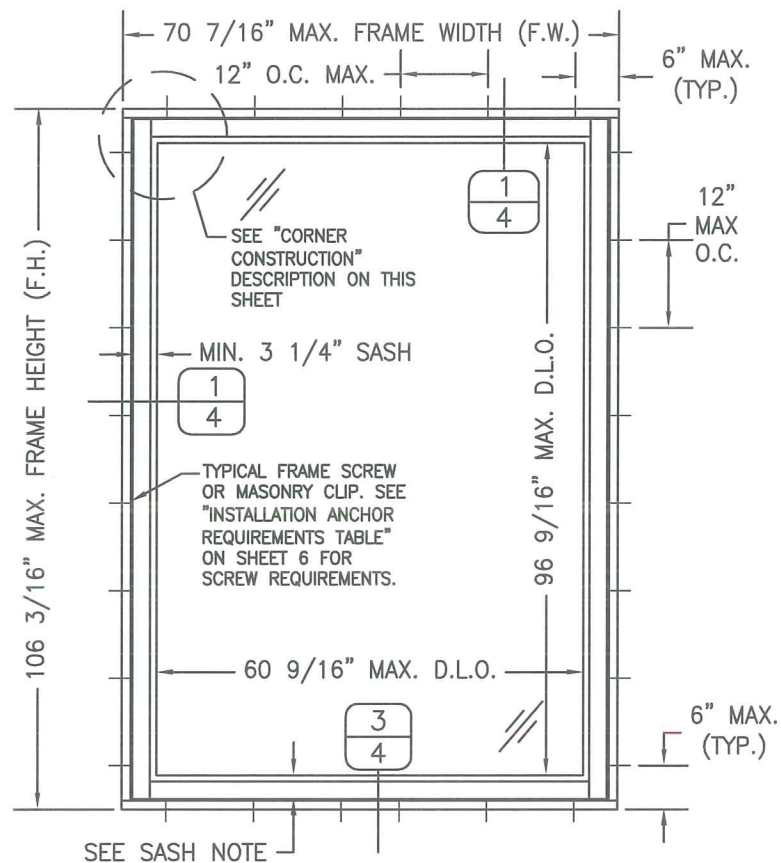
Thank you,


Scott Wolters
FL PE# 62354
JUN 12 2015

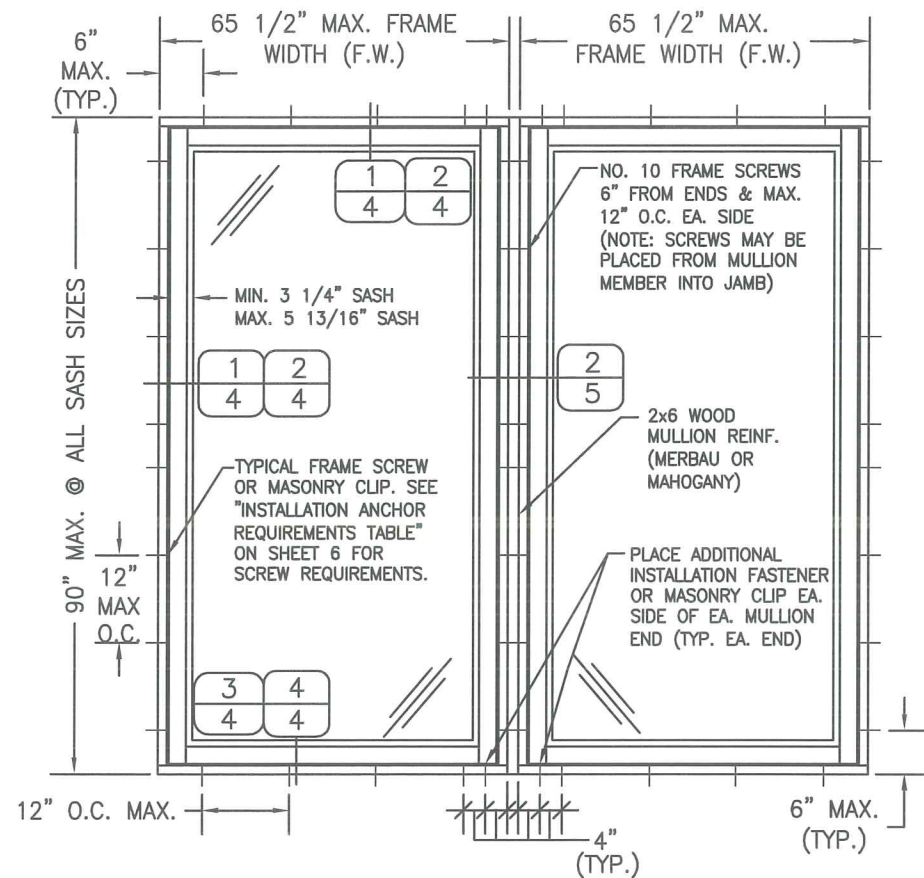




EXTERIOR ELEVATION
SINGLE WINDOW WITH 5 13/16" SASH



EXTERIOR ELEVATION
SINGLE WINDOW WITH 3 1/4" SASH



EXTERIOR ELEVATION
MULTIPLE WINDOW UNIT
(MAX. FOUR UNITS MAY BE COMBINED)
SEE OTHER ELEVATIONS FOR WINDOW DETAILS

GENERAL NOTES

1. THIS APPROVAL APPLIES TO FIXED SINGLE (O) OR DOUBLE (OO) IMPACT RESISTANT FIXED CASEMENT WINDOWS OR FIXED DOOR WINDOWS, CONSTRUCTED AND GLAZED AS INDICATED HEREIN.
2. ALLOWABLE DESIGN PRESSURES FOR THE SINGLE WINDOW ELEVATIONS ON SHEET 1 ARE AS SHOWN IN THE "ALLOWABLE WINDOW DESIGN PRESSURE TABLE" ON SHEET 2. FOR ALL OTHER ELEVATIONS THE ALLOWABLE DESIGN PRESSURES ARE AS NOTED BELOW EACH WINDOW ELEVATION.
3. THESE WINDOWS HAVE BEEN DESIGNED AND TESTED TO TAS 201, 202 & 203 PROTOCOLS IN ACCORDANCE WITH THE REQUIREMENTS OF THE CURRENT EDITION OF THE FLORIDA BUILDING CODE (FBC) INCLUDING THE HIGH VELOCITY HURRICANE ZONE (HVHZ) PROVISIONS.
4. THESE WINDOWS AS SHOWN HEREIN ARE LARGE AND SMALL MISSILE IMPACT RATED, SHUTTERS ARE NOT REQUIRED.
5. WOOD OR MASONRY OPENINGS, 1x OR 2x WOOD BUCKS, AND BUCK FASTENERS, BY OTHERS, SHALL BE PROPERLY DESIGNED & INSTALLED TO TRANSFER WIND LOADS IMPOSED BY THE GLAZING SYSTEM TO THE BUILDING STRUCTURE.
6. ANCHOR TYPE, SIZE, SPACING, AND EMBEDMENT SHALL BE AS SPECIFIED IN THESE DRAWINGS. ANCHOR EMBEDMENT TO SUBSTRATE SHALL BE BEYOND WALL DRESSING OR STUCCO.
7. ALL FASTENERS PENETRATING INTO PRESSURE TREATED WOOD SHALL BE CAPABLE OF PREVENTING CORROSION DUE TO REACTION WITH PRESSURE TREATMENT CHEMICALS.
8. DISSIMILAR MATERIALS THAT COME INTO CONTACT SHALL BE PROTECTED TO PREVENT REACTIONS IN ACCORDANCE WITH FBC CHAPTERS 20 AND 23.
9. A WIND LOAD DURATION FACTOR $C_d = 1.6$ WAS USED FOR THE ANALYSIS OF WOOD SCREWS ONLY.
10. THE MERBAU WINDOWS LISTED IN THIS APPROVAL ARE CONSTRUCTED OF A NATURALLY DURABLE SPECIES (SPECIE SPECIFIC GRAVITY = 0.68) IN COMPLIANCE WITH FBC CHAPTER 23. OTHER NATURALLY DURABLE WOOD SPECIES OF EQUAL OR GREATER STRENGTH MAY BE SUBSTITUTED FOR ALL WOOD COMPONENTS.
11. MEMBERS NOTCHED AS NEEDED TO FIT HARDWARE AS SHOWN HEREIN.
12. RECTANGULAR WINDOWS SHOWN IN ELEVATIONS ON SHEETS 1 THRU 3 MAY ALSO BE OTHER SHAPES AS INDICATED IN APPROVED SHAPES BOX ON SHEET 2. ANCHORAGE OF SHAPED WINDOWS IS THE SAME AS RECTANGULAR, WITH REQUIRED ANCHOR SPACING ALONG THE FRAME RADIUS CIRCUMFERENCE BEING THE SAME AS SPECIFIED FOR A STRAIGHT FRAME.
13. THE LONG DIMENSION OF THE WINDOW MAY BE HORIZONTAL OR VERTICAL (WIDTH AND HEIGHT AS INDICATED IN THIS DRAWING MAY BE INTERCHANGED).
14. WHEN THIS WINDOW IS USED AS A DOOR SIDE LIGHT, THE SILL SASH HEIGHT MAY BE INCREASED TO EQUAL THE DOOR PANEL BOTTOM RAIL HEIGHT (PER SEPARATE APPROVAL).
15. SUBSTRATES SHALL MEET THE MINIMUM STRENGTH REQUIREMENTS AS SHOWN IN INSTALLATION ANCHOR REQUIREMENTS TABLE ON SHEET 2. CONCRETE OR MASONRY SUBSTRATES SHALL NOT BE CRACKED. FOR INSTALLATION TO METAL SUBSTRATES, ANCHORS SHALL BE LONG ENOUGH TO BE FULLY THREADED THROUGH THE METAL THICKNESS WITH AN ADDITIONAL 3/16" MIN. OF THREADS BEYOND.

ALLOWABLE DESIGN
PRESSURES:

SEE NOTE 2

MULTIPLE UNIT NOTES:

1. TOTAL WIDTH OF ANY TWO MULLED WINDOWS SHALL BE 85 1/2" MAX. INCLUDING MULLION. ALL WINDOWS ARE RESTRICTED BY THE DIMENSIONS SPECIFIED.
2. THE MAXIMUM ALLOWABLE PRESSURE FOR A COMBINED UNIT IS RESTRICTED BY THE LESSER OF THE INDIVIDUAL WINDOW ALLOWABLE PRESSURE (SEE DESIGN PRESSURE TABLE ON SHEET 2) OR THE ALLOWABLE MULLION PRESSURE OF +65/-70 PSF
3. STACKING MAY BE HORIZONTAL OR VERTICAL.

CORNER CONSTRUCTION

JAMB & SILL CORNERS: VERTICAL JAMB ENDS ARE COPED AND BUTTED TO HORIZONTAL JAMBS WITH JOINT FULLY GLUED WITH WOOD GLUE AND DOWELED WITH (3) 1/2" DIA. x 3 5/16" LONG MERBAU WOOD DOWELS.

PANEL CORNERS: HORIZONTAL SASH ENDS ARE COPED AND BUTTED TO VERTICAL SASH PROFILES WITH JOINT FULLY GLUED WITH WOOD GLUE AND DOWELED WITH (4) 1/2" DIA. x 3 7/16" AND (3) 5/8" DIA. x 3 1/4" MERBAU WOOD DOWELS.

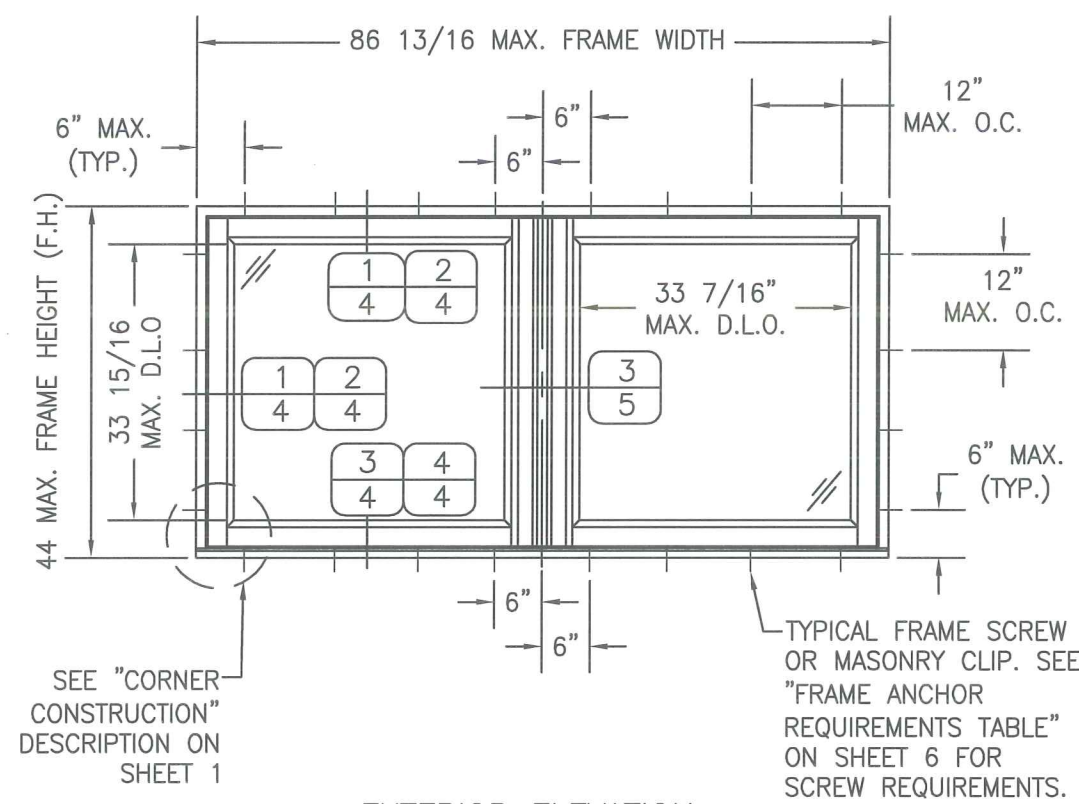
BOTTOM RAIL TO STILE CORNERS: HORIZONTAL SASH ENDS ARE COPED AND BUTTED TO VERTICAL SASH PROFILES WITH JOINT FULLY GLUED WITH WOOD GLUE AND DOWELED WITH (7) 1/2" DIA. x 3 7/16" AND (5) 5/8" DIA. x 3 1/4" MERBAU WOOD DOWELS.

FIXED PANEL SASH CORNERS: HORIZONTAL SASH ENDS ARE COPED AND BUTTED TO VERTICAL SASH PROFILES WITH JOINT FULLY GLUED WITH WOOD GLUE AND DOWELED WITH (2) 1/2" DIA. x 3 7/16" AND (1) 5/8" DIA. x 3 1/4" MERBAU WOOD DOWELS.

DATE:	5/2/14
DATE	6/12/15
REVISION DESCRIPTION	UPDATED TO 2014 FBC.
NO.	1
EUROPEAN SERIES WOOD FIXED CASEMENT WINDOWS	
LUXBAUM, LLC	
WINDOWS + DOORS	
2400 CENTREPARK WEST DR, SUITE 150	
WEST PALM BEACH, FL 33409	
Ph: (561) 684-1500	
www.luxbaum.com	
SCOTT WOLTERS ENGINEER	
No. 62354	
STATE OF FLORIDA	
PROFESSIONAL SEAL	
SCOTT WOLTERS	
FL PER 62354	
WOLTERS ENGINEERING	
15211 97TH ROAD, N	
WEST PALM BEACH, FL 33412	
DRAWING NO.	
EURO FIXED WINDOW	
SHEET NO.	
1 of 7	

ALLOWABLE WINDOW DESIGN PRESSURE TABLE (APPLICABLE TO SINGLE WINDOWS SHOWN ON SHEET 1, PRESSURES IN PSF)								
5 13/16" SASH		GLASS OPTION	WINDOW WIDTH (IN.)					
			78 & BELOW	84	90	96	102	109 3/8
WINDOW HEIGHT (IN.)	48 & BELOW	1 OR 3	±75	±75	±75	±75	±75	±75
		2	±75	±75	±75	±75	±75	±75
		4	+65/-70	+65/-70	+65/-70	+65/-70	+65/-70	+65/-70
	54	1 OR 3	±75	±75	±75	±75	±75	±75
		2	±75	±75	±75	±75	±75	±75
		4	+65/-70	+65/-70	+65/-70	+65/-70	+65/-70	+65/-70
	60	1 OR 3	±75	±75	±75	±75	±75	±72.6
		2	±75	±75	±75	±75	±75	±75
		4	+65/-70	+65/-70	+65/-70	+65/-70	+65/-70	+65/-70
	66	1 OR 3	±75	±75	±75	±75	±70.7	±65.3
		2	±75	±75	±75	±75	±75	±75
		4	+65/-70	+65/-70	+65/-70	+65/-70	+65/-70	+65/-70
	73 9/16	1 OR 3	±75	±75	±73.2	±68.5	±64	±59.1
		2	±75	±75	±75	±75	±75	±75
		4	+65/-70	+65/-70	+65/-70	+65/-70	+65/-70	+65/-70
3 1/4" SASH		GLASS OPTION	WINDOW WIDTH (IN.)					
			78 & BELOW	84	90	96	102	106 3/16
WINDOW HEIGHT (IN.)	48 & BELOW	1 OR 3	±75	±75	±75	±75	±75	±75
		2	±75	±75	±75	±75	±75	±75
		4	+65/-70	+65/-70	+65/-70	+65/-70	+65/-70	+65/-70
	54	1 OR 3	±75	±75	±75	±75	±75	±72.6
		2	±75	±75	±75	±75	±75	±75
		4	+65/-70	+65/-70	+65/-70	+65/-70	+65/-70	+65/-70
	60	1 OR 3	±75	±75	±75	±72.2	±67.9	±64.9
		2	±75	±75	±75	±75	±75	±75
		4	+65/-70	+65/-70	+65/-70	+65/-70	+65/-70	+65/-70
	66	1 OR 3	±75	±75	±71.2	±66.7	±62.1	±59.5
		2	±75	±75	±75	±75	±75	±75
		4	+65/-70	+65/-70	+65/-70	+65/-70	+65/-70	+65/-70
	70 7/16	1 OR 3	±75	±72.5	±67.6	±62.9	±59.3	±56.5
		2	±75	±75	±75	±75	±75	±75
		4	+65/-70	+65/-70	+65/-70	+65/-70	+65/-70	+65/-70

DESIGN PRESSURE NOTES:
1. GLASS OPTIONS 1
THRU 4 ARE AS SHOWN
IN DETAILS ON SHEET 5.
2. HEIGHT & WIDTH MAY
BE INTERCHANGED SUCH
THAT LONG DIMENSION IS
HORIZONTAL OR VERTICAL.



EXTERIOR ELEVATION
DOUBLE SASH WINDOW
SCALE: 1/2"=1'-0"

ALLOWABLE DESIGN PRESSURE FOR THIS
WINDOW = +/-75 PSF

APPROVED SHAPES

NOTES:
1. OTHER SHAPES MAY APPLY
PROVIDED THEY ARE SIMILAR
TO THOSE SHOWN & HAVE
CORNER CONSTRUCTION AS
DESCRIBED ON SHEET 1.
2. ALL SHAPED UNITS MUST
FIT INSCRIBED INTO THE
ALLOWABLE RECTANGULAR
UNITS & BE GOVERNED BY
THE ALLOWABLE PRESSURE
OF THE RESPECTIVE
RECTANGULAR UNIT.

DATE: 5/2/14

DATE: 6/12/15

REVISION DESCRIPTION: UPDATED TO 2014 FBC

NO. 1

EUROPEAN SERIES WOOD FIXED CASEMENT WINDOWS

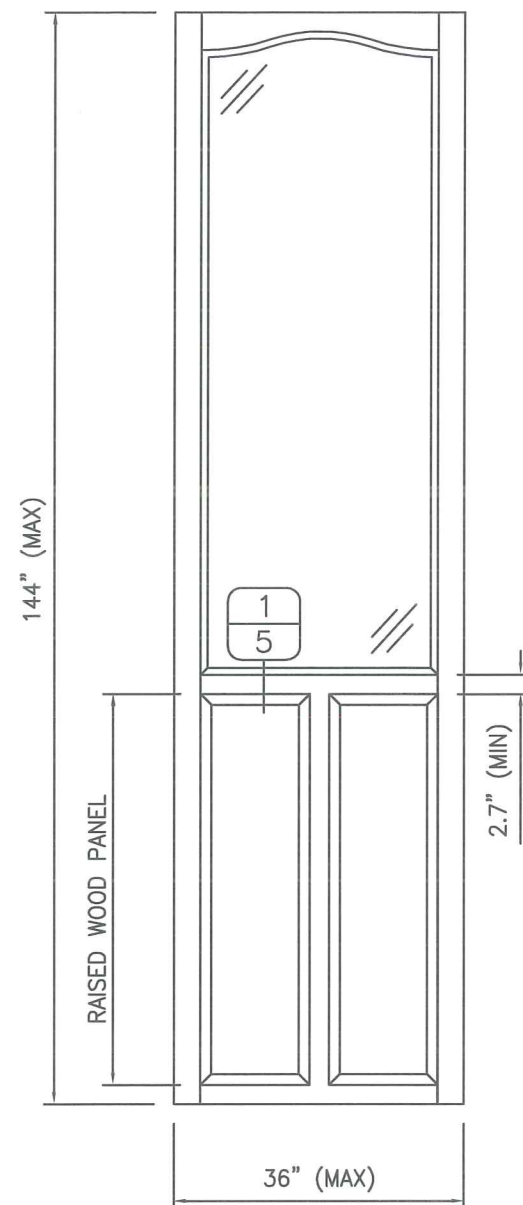
LUXBAUM, LLC
WINDOWS + DOORS
2400 CENTREPARK WEST DR, SUITE 150
WEST PALM BEACH, FL 33409
Ph: (561) 684-1500
www.luxbaum.com

SCOTT WOLTERS
FL PE# 62354

WOLTERS ENGINEERING
(COA# 27194)
15211 97TH ROAD N
WEST PALM BEACH, FL 33412

DRAWING NO. EURO FIXED WINDOW

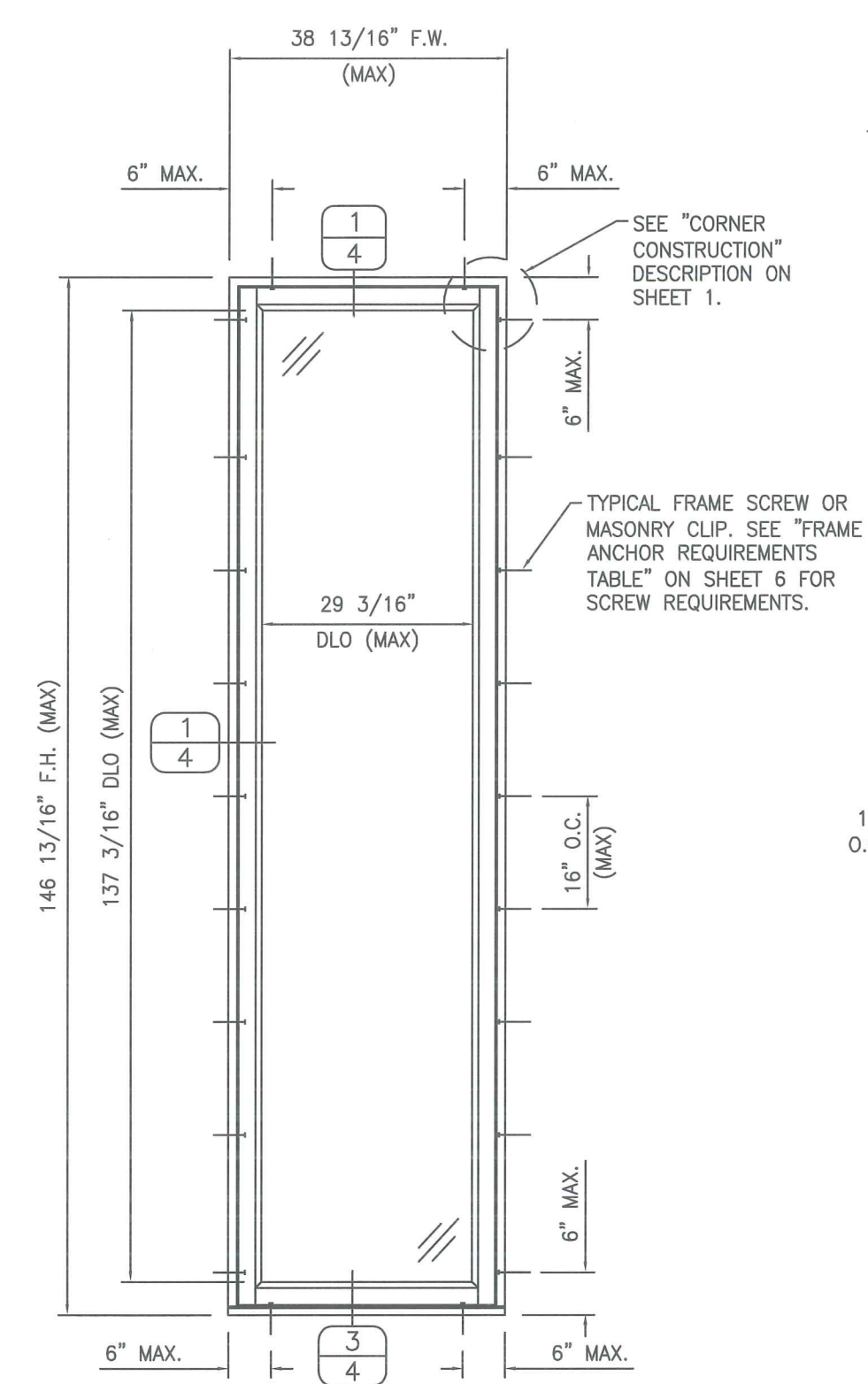
SHEET NO. 2 OF 7



**EXTERIOR ELEVATION
PARTIAL RAISED PANEL WITH
STANDARD MID-RAILS**

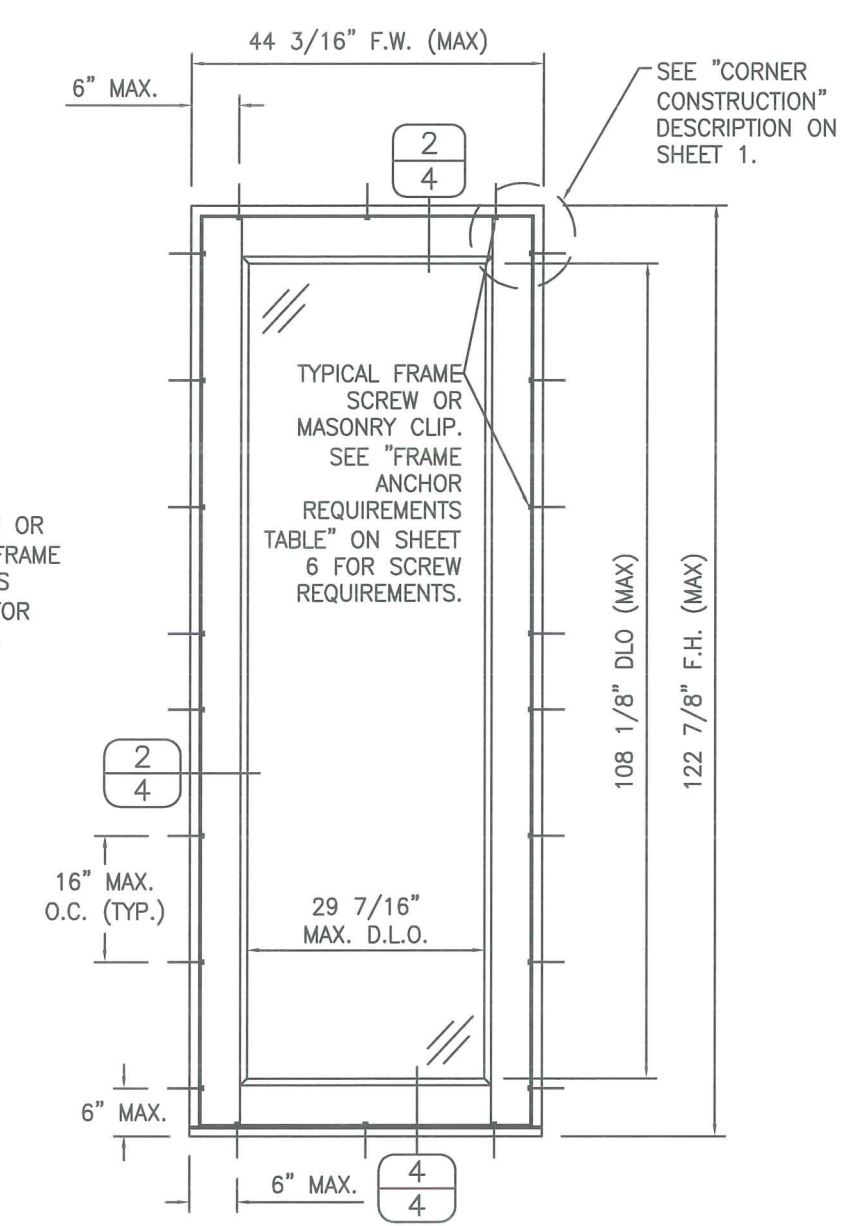
ALLOWABLE DESIGN PRESSURES FOR THIS
WINDOW = +65/-70 PSF

1. TOP & MID RAILS MAY BE OF ANY CONFIGURATION PROVIDING THE SMALLEST CROSS SECTION OF RAILS IS EQUAL TO OR LARGER THAN THAT DETAILED IN DRAWINGS.
2. MULTIPLE MID RAIL (BOTH HORIZONTAL & VERTICAL) MAY BE USED WITH THESE PANELS.
3. STANDARD PARTIAL PANEL CONDITION IS SHOWN ABOVE. OTHER PARTIAL PANEL CONFIGURATIONS ARE ALSO PART OF THIS APPROVAL, PROVIDING THEY ARE SIMILAR IN CONSTRUCTION TO THAT SHOWN ABOVE.
4. PANEL ONLY IS SHOWN. FOR INSTALLATION INTO FRAME, SEE OTHER ELEVATIONS.



**EXTERIOR ELEVATION
ALTERNATE SINGLE
FIXED PANEL**

ALLOWABLE DESIGN PRESSURES FOR THIS
WINDOW = +65/-70 PSF



**EXTERIOR ELEVATION
SINGLE FIXED DOOR**

ALLOWABLE DESIGN PRESSURES FOR THIS
WINDOW = +65/-70 PSF

DATE	6/12/15
REVISION DESCRIPTION	UPDATED TO 2014 FBC
NO.	1

EUROPEAN SERIES WOOD FIXED CASEMENT WINDOWS

LUXBAUM, LLC
WINDOWS + DOORS

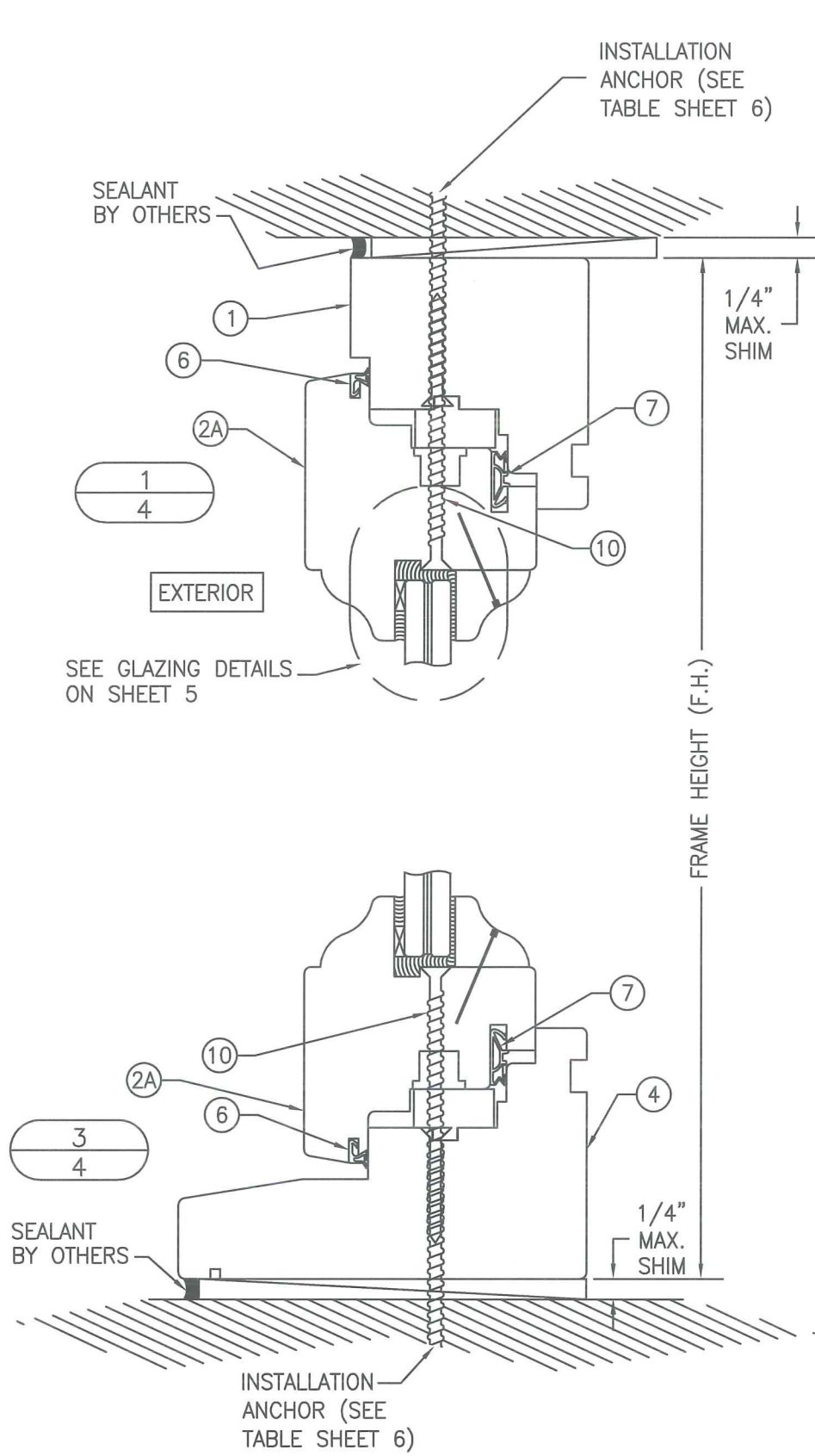
2400 CENTREPARK WEST DR, SUITE 150
WEST PALM BEACH, FL 33409

Ph: (561) 684-1500
www.luxbaum.com

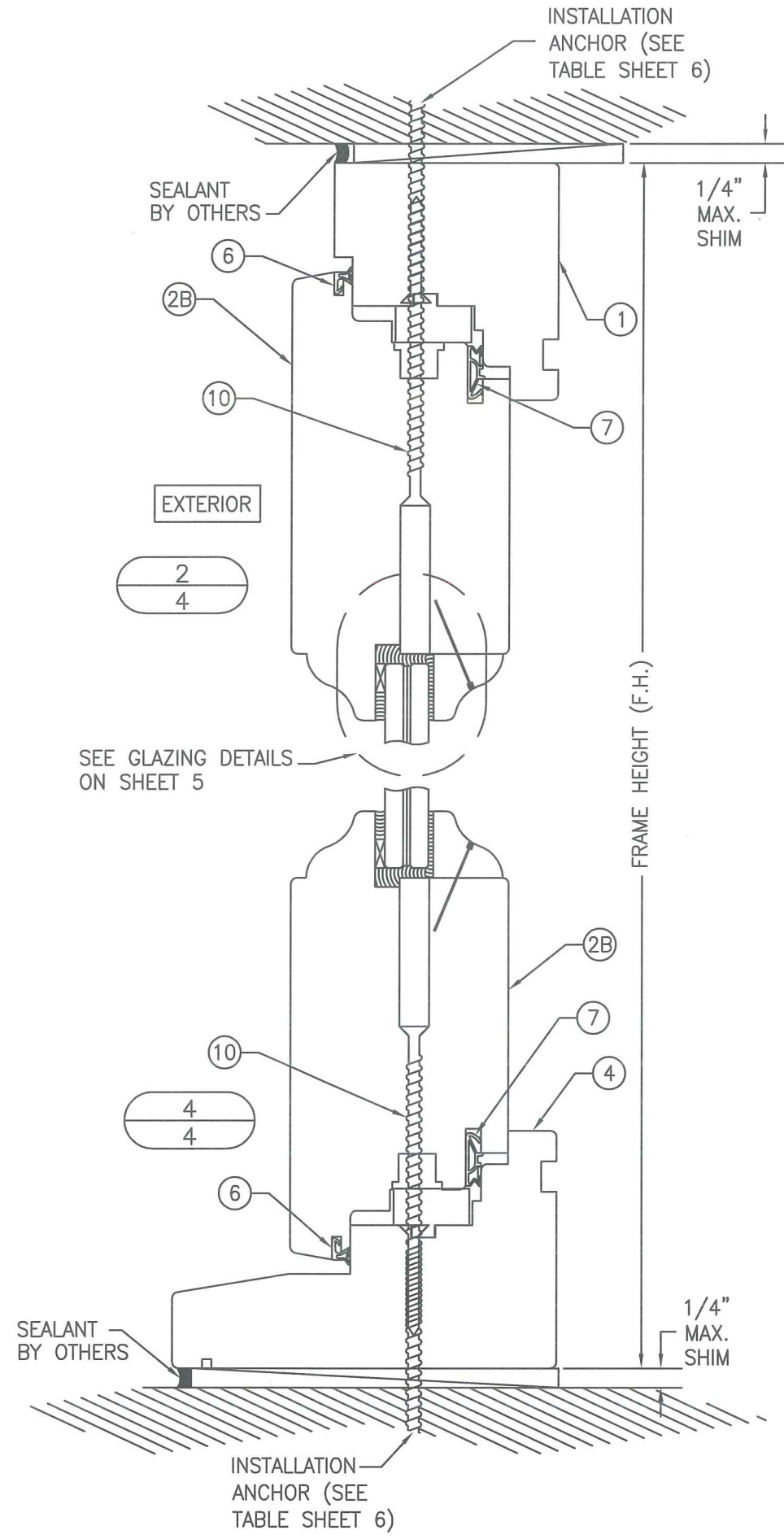


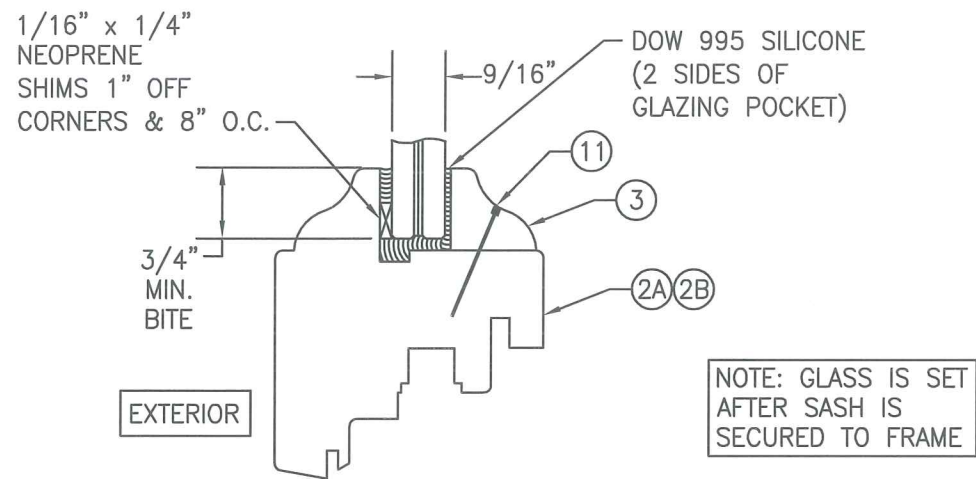
SCOTT WALTERS
FL PE# 62354

WALTERS ENGINEERING
15211 97TH ROAD N
COAS 27104
WEST PALM BEACH, FL 33412



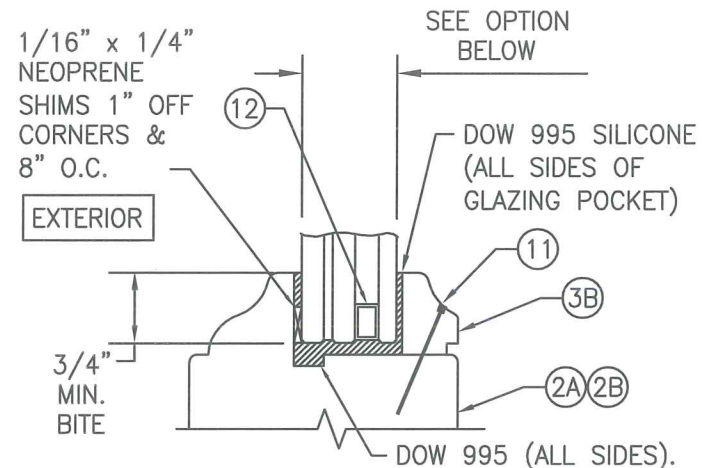
NOTE: BRICK MOLDS MAY BE PLACED WITH WINDOW & ARE OPTIONAL (NOT SHOWN)





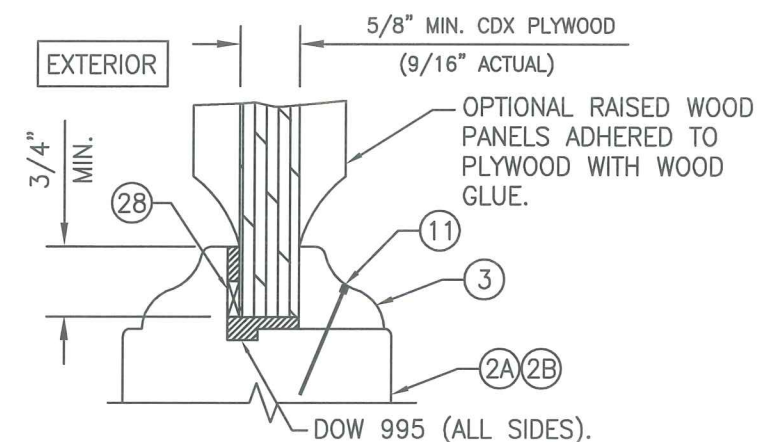
GLAZING DETAIL

- OPTION 1: 9/16" SAF-GLAS POLYCARBONATE LAMINATED GLASS (1/4" A.N./0.015 ADHESIVE/0.07 POLYCARBONATE/0.015 ADHESIVE/1/4" A.N.)
- OPTION 2: 9/16" SAF-GLAS POLYCARBONATE LAMINATED GLASS (1/4" HT.ST./0.015 ADHESIVE/0.07 POLYCARBONATE/0.015 ADHESIVE/1/4" HT.ST.)
- OPTION 3: 9/16" DUPONT SENTRYGLAS IONOPLAST LAMINATED GLASS (1/4" A.N./0.09 SGP/1/4" A.N.)

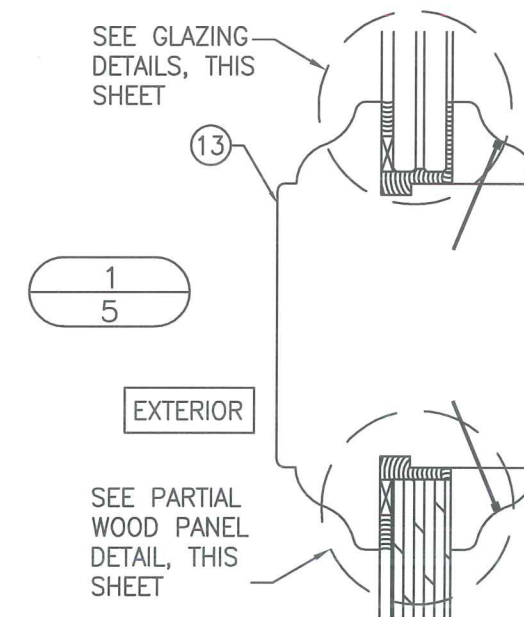
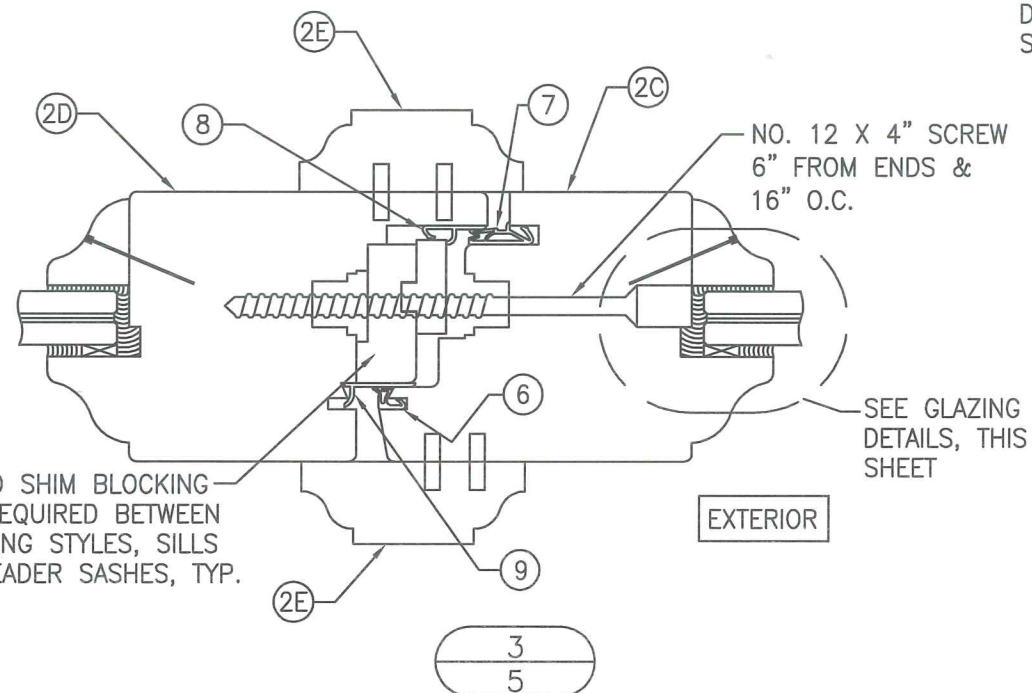
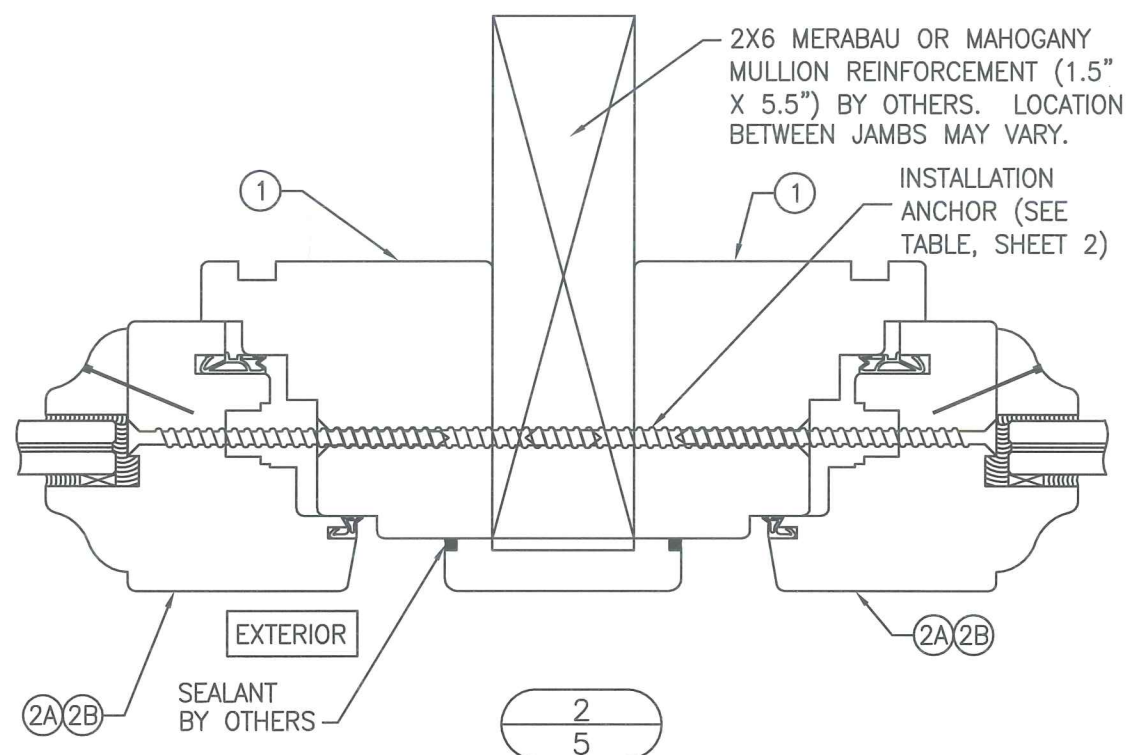


I.G. GLAZING DETAIL

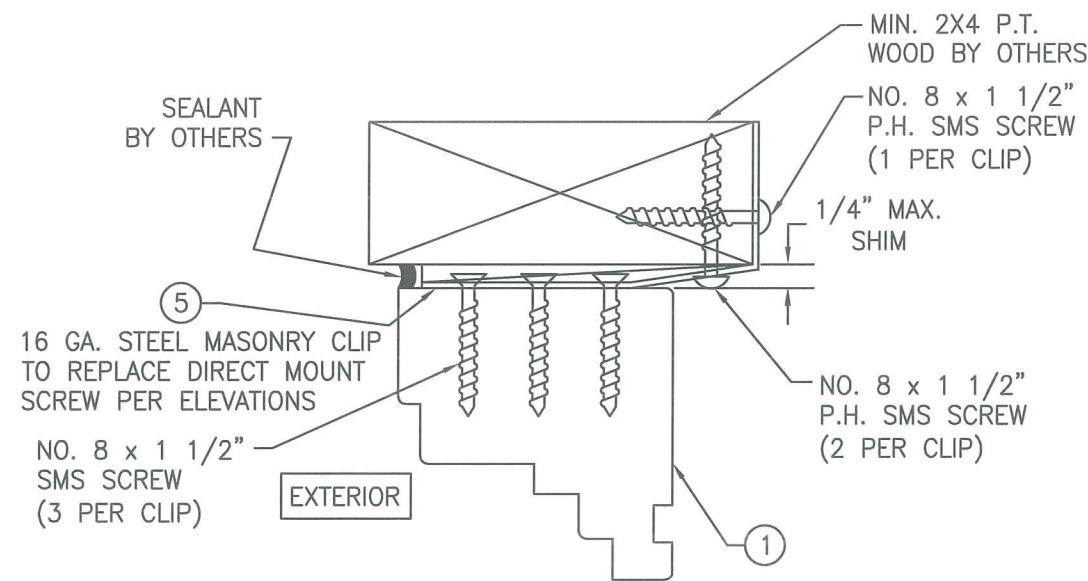
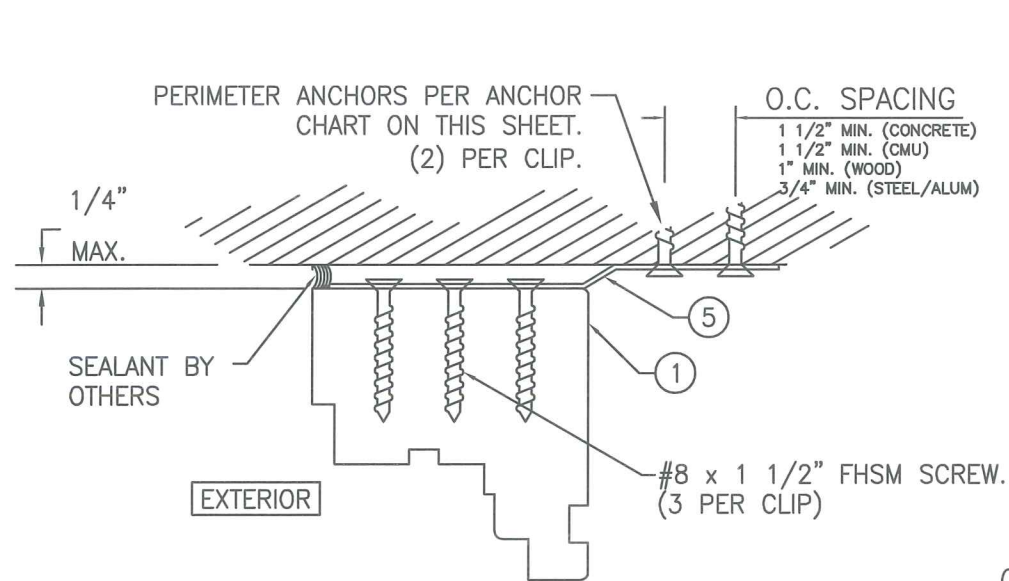
- OPTION 4: 1 1/8" INSULATED LAMINATED GLASS (3/16" H.S./0.09 SGP/3/16" H.S. EXTERIOR & 1/2" AIR SPACE & 3/16" TEMPERED INTERIOR)



PARTIAL WOOD PANEL DETAIL



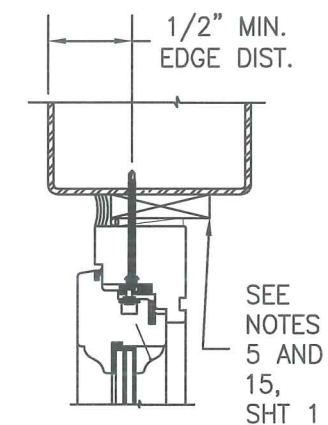
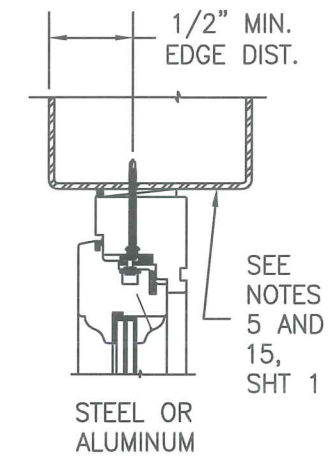
DATE: 5/2/14	
DATE	6/12/15
REVISION DESCRIPTION	UPDATED TO 2014 FBC
NO.	1
<p>EUROPEAN SERIES WOOD FIXED CASEMENT WINDOWS</p> <p>LUXBAUM ,LLC WINDOWS + DOORS</p> <p>2400 CENTREPARK WEST DR, SUITE 150 WEST PALM BEACH, FL 33409</p> <p>Ph: (561) 684-1500 www.luxbaum.com</p>	
<p>SCOTT WOLTERS FL PE# 62354</p> <p>WOLTERS ENGINEERING (CO# 27194) 15211 97TH ROAD N WEST PALM BEACH, FL 33412</p>	
DRAWING NO. EURO FIXED WINDOW	
SHEET NO. 5 OF 7	



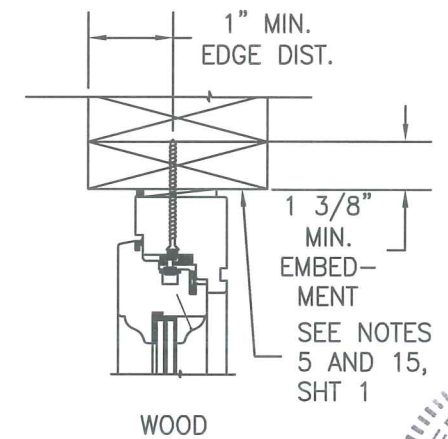
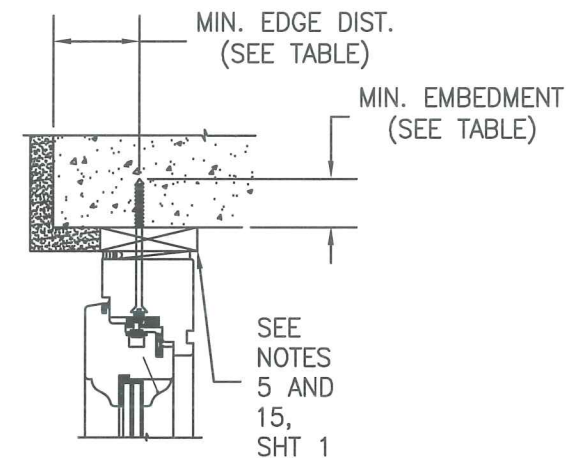
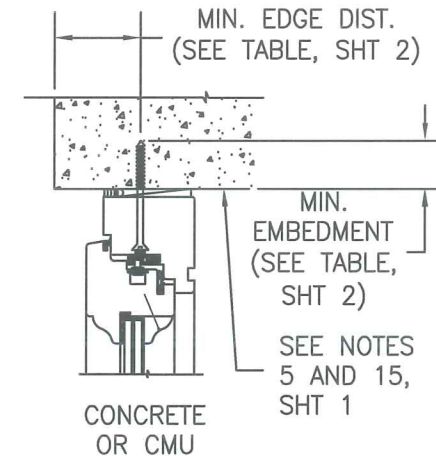
OPTIONAL MASONRY CLIP MOUNT DETAILS
 FOR DETAIL NOT SHOWN, SEE OTHER SECTIONS
 (HEAD SECTION SHOWN, SIDES AND SILL SIMILAR)

INSTALLATION ANCHOR REQUIREMENTS TABLE

ID	SUBSTRATE	ANCHOR	MIN. EMBEDMENT	MIN. EDGE DISTANCE
A	CONCRETE OR GROUT-FILLED CMU (2000 PSI MIN)	1/4" ITW COATED CARBON STEEL TAPCON	1 1/2"	3"
B	CONCRETE (3000 PSI MIN)	1/4" ITW 410 STAINLESS TAPCON	1 3/4"	2 1/2"
C	CONCRETE OR GROUT-FILLED CMU (2850 PSI MIN)	1/4" ELCO COATED CARBON STEEL ULTRA CON	1 3/4"	2 1/2"
D	CONCRETE (3000 PSI MIN)	1/4" HILTI COATED CARBON STEEL OR STAINLESS STEEL KWIK-CON II	1"	2 1/2"
E	HOLLOW OR GROUT-FILLED CMU (ASTM C-90)	1/4" HILTI COATED CARBON STEEL OR STAINLESS STEEL KWIK-CON II	1"	2 1/2"
F	2x MIN. SOUTHERN PINE WOOD (G=0.55 MIN)	#12 GRADE 5 WOOD SCREW	1 3/8"	1"
G	16 GAUGE (0.060") MIN. STEEL STUD 33 KSI YIELD MIN.	#12-24 ITW TEKS SELF-DRILLING SCREW	SEE NOTE 15, SHEET 1	1/2"
H	1/8" ALUM. 6063-T5 MIN. OR 1/8" STEEL 33 KSI MIN.	#12 GRADE 5 SELF-TAPPING / DRILLING SCREW	SEE NOTE 15, SHEET 1	1/2"



TYPICAL ANCHOR CONDITIONS



DATE: 5/2/14
DATE: 6/12/15
REVISION DESCRIPTION: UPDATED TO 2014 FBC
NO. 1

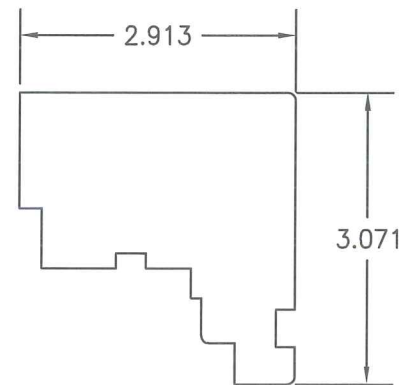
EUROPEAN SERIES WOOD FIXED CASEMENT WINDOWS

LUXBAUM, LLC
WINDOWS + DOORS

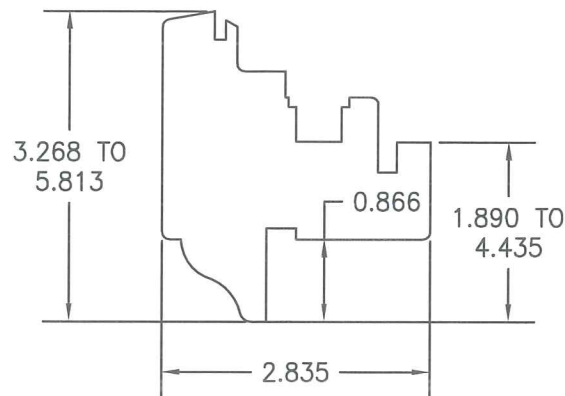
2400 CENTREPARK WEST DR, SUITE 150
WEST PALM BEACH, FL 33409

Ph: (561) 684-1500
www.luxbaum.com

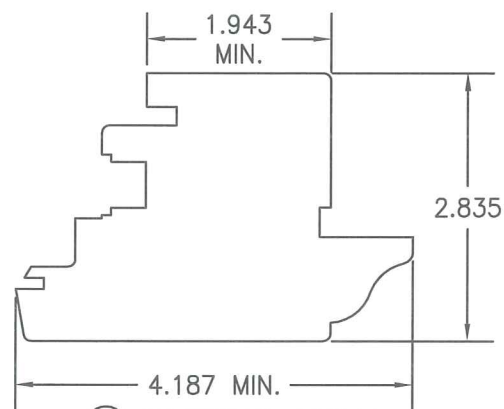
DRAWING NO. EURO FIXED WINDOW
SHEET NO. 6 OF 7



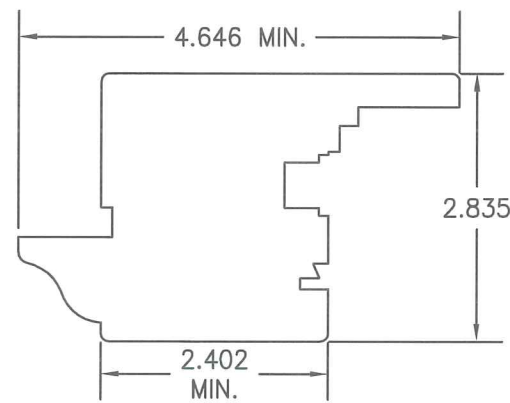
① HEAD & SIDE JAMB



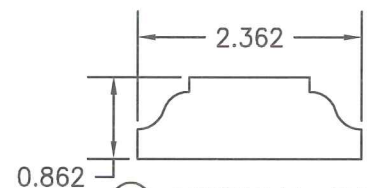
②A ②B SMALL SASH & LARGE SASH



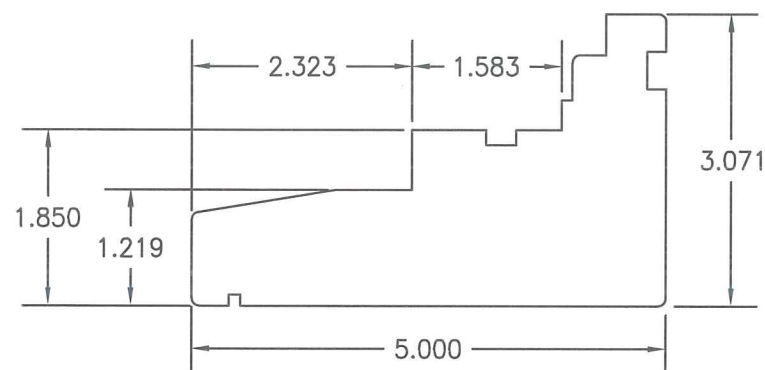
②C MEETING STILE



②D MEETING STILE



②E ASTRIGAL CAP

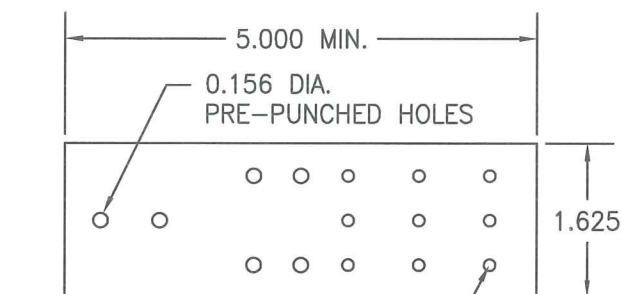


④ SILL JAMB



③ GLAZING BEAD

③B I.G. GLAZING BEAD



⑤ MASONRY CLIP

PRE-PUNCHED HOLES ARE ADDED FOR CLIPS LONGER THAN 5"

ITEM #	PART	ITEM DESCRIPTION	MANUFACTURER/NOTES
PARTS			
1	7478	FRAME HEAD & SIDE JAMB	MIN. SELECT STRUCTURAL MERBAU OR MAHOGANY
2A	7283	SMALL SASH	MIN. SELECT STRUCTURAL MERBAU OR MAHOGANY
2B	72148	LARGE SASH	MIN. SELECT STRUCTURAL MERBAU OR MAHOGANY
2C	72106	MEETING STYLE SASH	MIN. SELECT STRUCTURAL MERBAU OR MAHOGANY
2D	72118	MEETING STYLE SASH	MIN. SELECT STRUCTURAL MERBAU OR MAHOGANY
2E	2260	ASTRIGAL CAP	MIN. SELECT STRUCTURAL MERBAU OR MAHOGANY
3	2223	GLAZING BEAD / GLASS STOP	MIN. SELECT STRUCTURAL MERBAU OR MAHOGANY
3B	1522	I.G. GLAZING BEAD / GLASS STOP	MIN. SELECT STRUCTURAL MERBAU OR MAHOGANY
4	78127	SILL JAMB	MIN. SELECT STRUCTURAL MERBAU OR MAHOGANY
5	-	1 5/8" WIDE x 0.05" THK. x MIN. 5" LONG MASONRY CLIP	ASTM A653 MIN. 33 KSI GALV. STEEL
SEALS AND SEALANTS			
6	SV-33/ACF-4527	COMPRESSION SEAL	DEVENTER/G-U
7	SV-12/ACF-6950	COMPRESSION SEAL	DEVENTER/G-U
8	S6544	COMPRESSION SEAL	DEVENTER/G-U
9	S6544	COMPRESSION SEAL	DEVENTER/G-U
MISCELLANEOUS PARTS AND FASTENERS			
10	-	#12 x 4" PFH SMS SCREW	4" FROM CORNERS & 12" O.C.
11	-	1/4" x 1 1/4" BRAD NAIL	2" FROM CORNERS & 4" O.C.
12	-	ALUMINUM INS. GLASS SPACER	CARDINAL I.G.

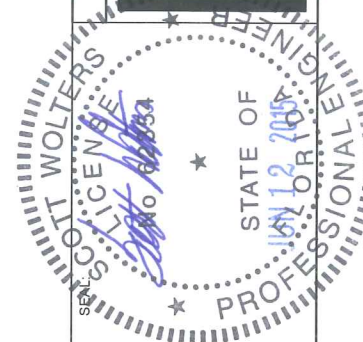
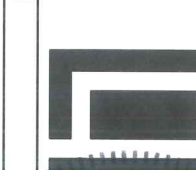
DATE: 5/2/14

DATE 6/12/15

REVISION DESCRIPTION
1 UPDATED TO 2014 FBC

NO. 1

EUROPEAN SERIES WOOD FIXED CASEMENT WINDOWS
LUXBAUM LLC
WINDOWS + DOORS
2400 CENTREPARK WEST DR, SUITE 150
WEST PALM BEACH, FL 33409
Ph: (561) 684-1500
www.luxbaum.com



SCOTT WALTERS
FL PE# 02334
WALTERS ENGINEERING
(CO.# 27194)
15211 97TH ROAD N
WEST PALM BEACH, FL 33412

DRAWING NO.
EURO FIXED WINDOW

SHEET NO.
7 OF 7