

LUXBAUM WINDOWS + DOORS
T: 1.561.684.1500 F:1.561.689.1506
1501 NORTHPOINT PARKWAY, SUITE 101
WEST PALM BEACH, FL 33407 USA



CASEMENT WINDOW
ARCHITECTS' CATALOG

Laszlo Wagner

CEO & Founder
laszlo.wagner@luxbaum.com

Putu Udayana

General Manager

Mogo Yusina Kadena

Assistant Manager

Ketut Rai Sami

Production Estimator

Judy Luca

Controller
judy.luca@luxbaum.com

Judy Wilber

Executive Assistant - Project Manager
judy.wilber@luxbaum.com

Andrea Mendoza

CAD Manager - Shop Drawings
andrea.mendoza@luxbaum.com

David Vander Wiele

Senior Installation Manager
dave.vanderviele@luxbaum.com

Peter Stalder

Installation Manager
peter.stalder@luxbaum.com

www.luxbaum.com

LUXBAUM WINDOWS + DOORS
T: 1.561.684.1500 F: 1.561.689.1506

1501 NORTHPOINT PARKWAY, SUITE 101, WEST PALM BEACH, FL 33407 USA

ARCHITECTS' CATALOG

CASEMENT WINDOWS

Scale: 1-1/2" = 1'-0"

1A

WIDEST

1B

1C

1D

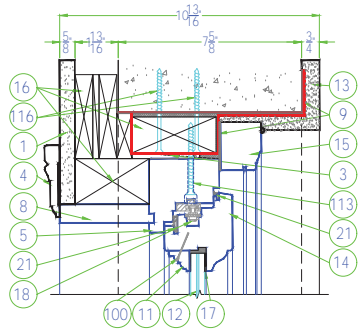
1E

1F

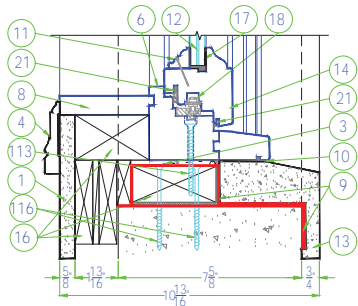
1G

1H

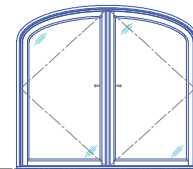
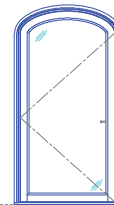
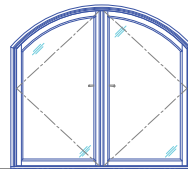
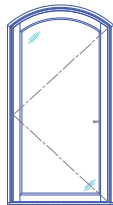
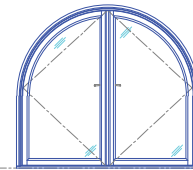
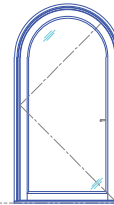
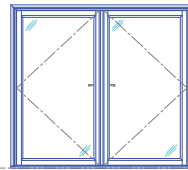
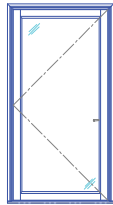
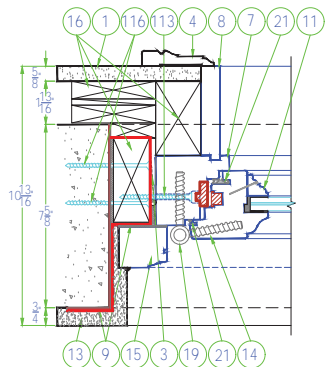
CAS-HEADER



CAS-SILL



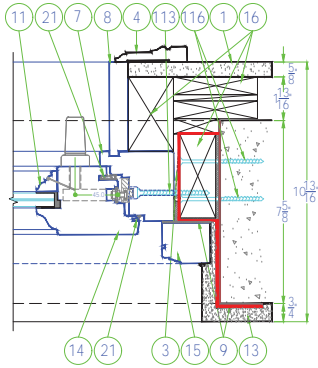
CAS-HINGE



①	DESCRIPTION
1	Drywall
2	Framing
3	Shim Shingles Max. 1/4"
4	Casing
5	Jamb Header
6	Jamb Sill
7	Jamb Leg
8	Jamb Extension
9	Pro-R Guard Fast Flash
10	Pro-R Guard Air Dam
11	Glasstop
12	Impact Glass / Insulated Glass
13	Stucco
14	Sash
15	Brickmold
16	Buck / Framing
17	Glazing - Dow 995
18	'FFI' - Operating Hardware
19	'Centor' - Track
20	'Centor' - Hardware
21	Gasket / Weather Seal
22	Operating Handle
23	Fillet
24	'Centor' Bug Screen System
	Threshold
100	23 Gauge Pin Nail 1"
100a	23 Gauge Pin Nail 1-3/8"
100b	23 Gauge Pin Nail 2"
100	23 Gauge Pin Nail
108	#8 X 1 1/2" Wood Screw SS
112	#14 X 2 1/2" Wood Screw SS
112a	#14 X 4" Wood Screw SS
112b	#14 X 3 1/2" Wood Screw SS
112c	#14 X 3 1/4" Wood Screw SS
112d	#14 X 5 1/2" Wood Screw SS
112e	#14 X 1 1/2" Wood Screw SS Pan Head
116	Tapcon 1/4" x 3 1/4" SS
116a	Tapcon 1/4" x 1-3/4" SS Hex
116b	Tapcon 1/4" x 2" SS
116c	Tapcon 1/4" x 4" SS
116d	Tapcon 1/4" x 3-3/4" SS phillips
118	#8 X 1 1/2" Strap Screw SS
212	Strap 1-1/2" x 1-3/4" SS
213	Monarch Z Clip

ALL DIMENSIONS TO BE SEQUENCED AS PER THE APPLICABLE LIST APPROVALS

CAS-HANDLE



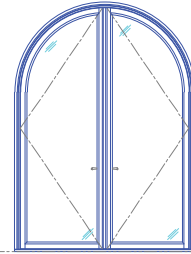
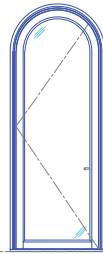
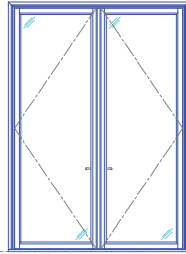
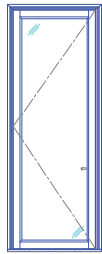
2A

WIDE

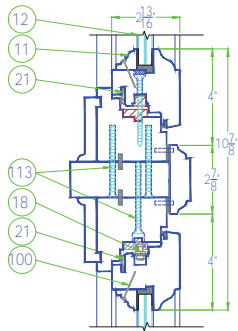
2B

2C

2D



CAS-TRANSOM

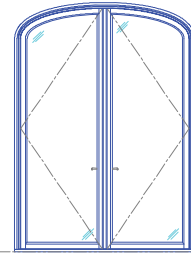
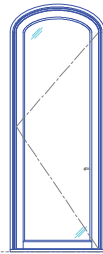
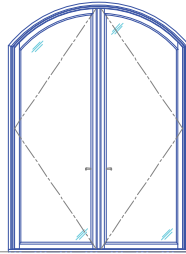
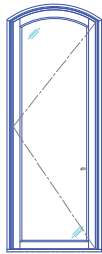


2E

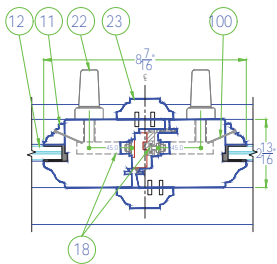
2F

2G

2H



CAS-MEETING STYLE



LUXBAUM WINDOWS + DOORS
 T: 1.561.684.1500 F:1.561.689.1506



LUXBAUM
 WINDOWS + DOORS

1501 NORTHPOINT PARKWAY , SUITE 101
 WEST PALM BEACH, FL 33407 USA

ARCHITECTS' CATALOG

CASEMENT WINDOWS

Scale: 1-1/2" = 1'-0"

3A

TALLEST

3B

3C

3D

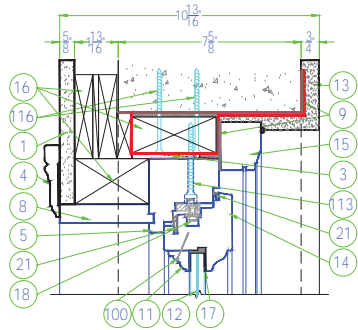
3E

3F

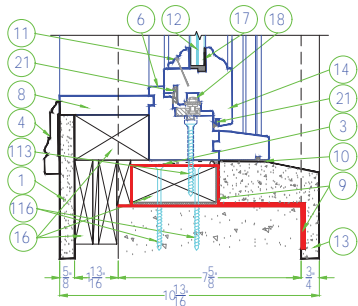
3G

3H

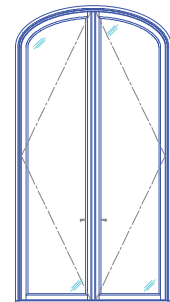
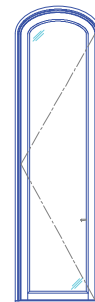
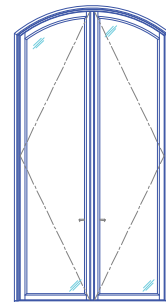
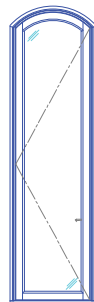
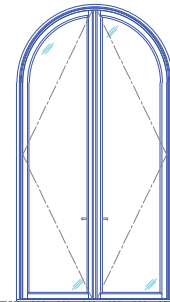
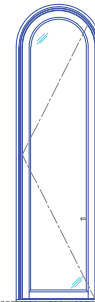
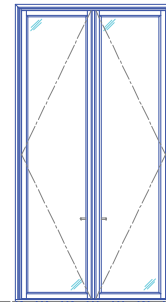
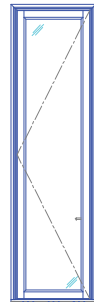
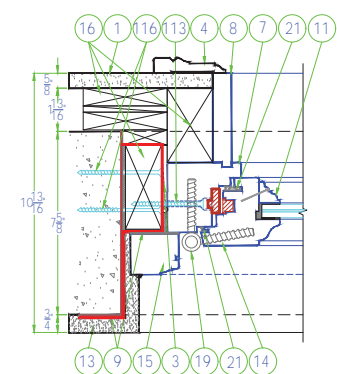
CAS-HEADER



CAS-SILL



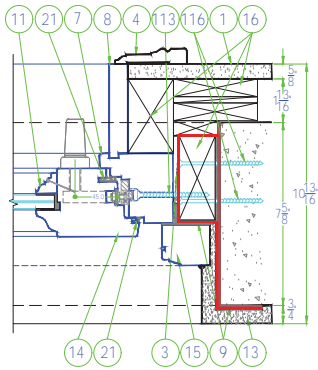
CAS-HINGE



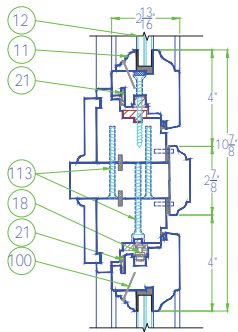
①	DESCRIPTION
1	Drywall
2	Framing
3	Shim Shingles Max. 1/4"
4	Casing
5	Jamb Header
6	Jamb Sill
7	Jamb Leg
8	Jamb Extension
9	Pro-R Guard Fast Flash
10	Pro-R Guard Air Dam
11	Glasstop
12	Impact Glass / Insulated Glass
13	Stucco
14	Sash
15	Brickmold
16	Buck / Framing
17	Glazing - Dow 995
18	FFI - Operating Hardware
19	Centor - Track
20	Centor - Hardware
21	Gasket / Weather Seal
22	Operating Handle
23	Fillet
24	Centor Bug Screen System
100	Threshold
100a	23 Gauge Pin Nail 1-3/8"
100b	23 Gauge Pin Nail 2"
100c	23 Gauge Pin Nail
108	#8 X 1 1/2" Wood Screw SS
112	#14 X 2 1/2" Wood Screw SS
112a	#14 X 4" Wood Screw SS
112b	#14 X 3 1/2" Wood Screw SS
112c	#14 X 3 1/4" Wood Screw SS
112d	#14 X 5 1/2" Wood Screw SS
112e	#14 X 1 1/2" Wood Screw SS Pan Head
116	Tapcon 1/4" x 3/4" SS
116a	Tapcon 1/4" x 1-3/4" SS Hex
116b	Tapcon 1/4" x 2" SS
116c	Tapcon 1/4" x 4" SS
116d	Tapcon 1/4" x 3-3/4" SS phillips
118	#8 X 1 1/2" Strap Screw SS
212	Strap 1-1/2" x 1-3/4" SS
213	Monarch Z Clip

ALL INSULATIONS TO BE SPECIFIED AS PER THE APPLICABLE LIST APPROVALS

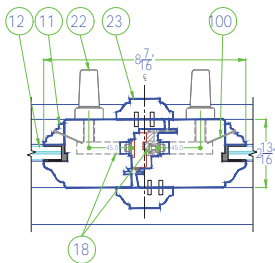
CAS-HANDLE



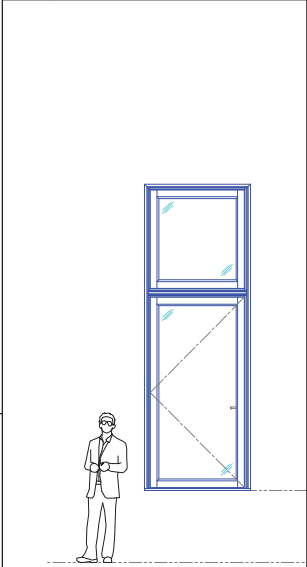
CAS-TRANSOM



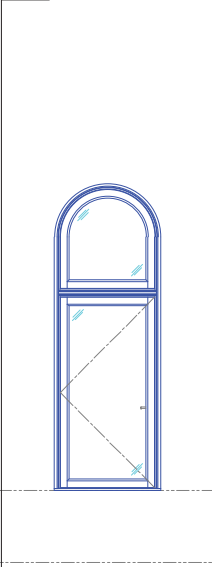
CAS-MEETING STYLE



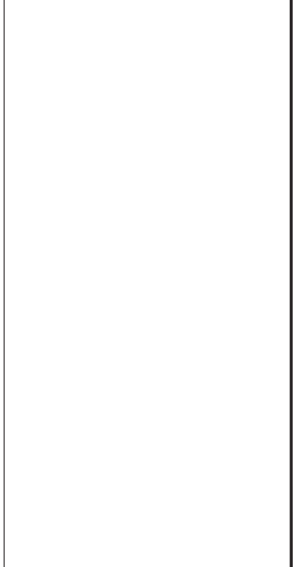
4A WIDEST + TRANSOM 4B



4C



4D

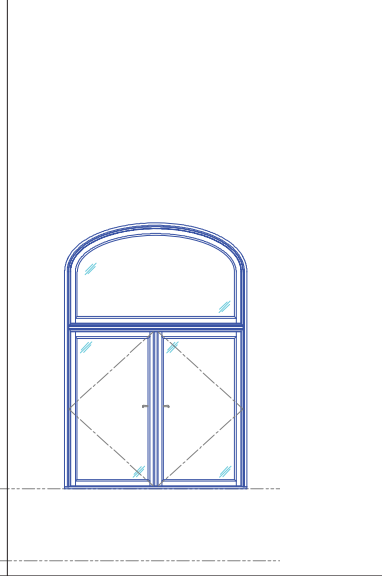
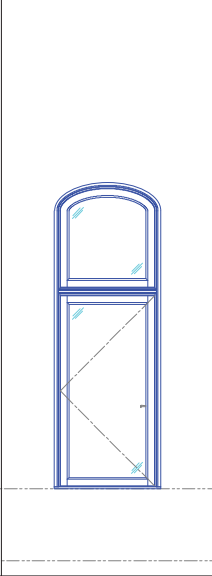
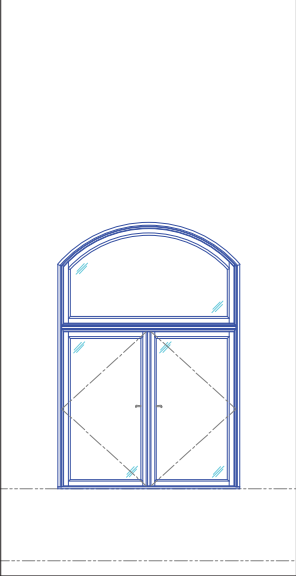
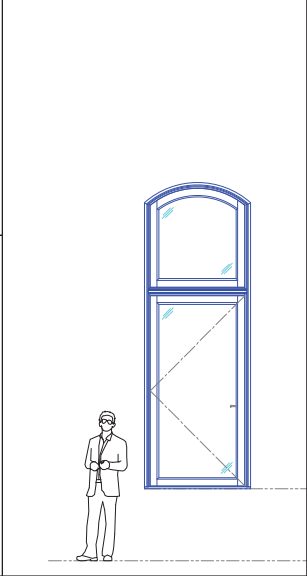


4E

4F

4G

4H



LUXBAUM WINDOWS + DOORS
 T: 1.561.684.1500 F:1.561.689.1506



LUXBAUM
 WINDOWS + DOORS

1501 NORTHPOINT PARKWAY , SUITE 101
 WEST PALM BEACH, FL 33407 USA

ARCHITECTS' CATALOG

CASEMENT WINDOWS

Scale: 1-1/2" = 1'-0"

5A WIDE + TRANSOM

5B

5C

5D

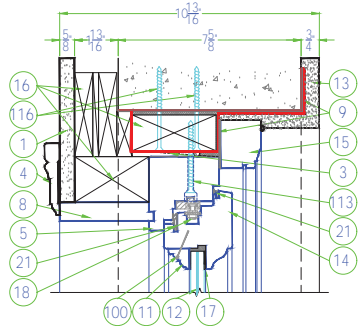
5E

5F

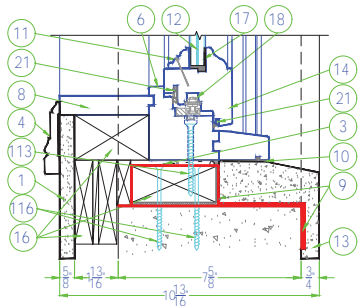
5G

5H

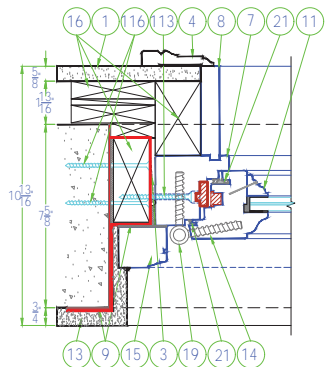
CAS-HEADER



CAS-SILL



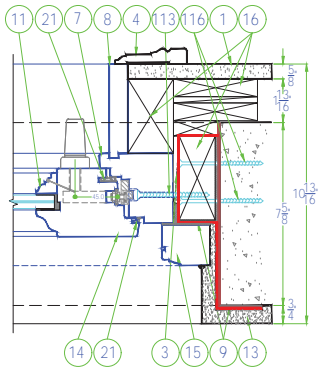
CAS-HINGE



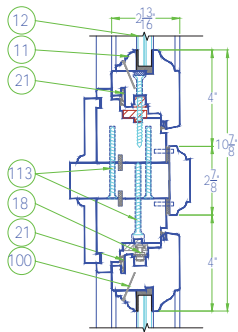
①	DESCRIPTION
1	Drywall
2	Framing
3	Shim Shingles Max. 1/4"
4	Casing
5	Jamb Header
6	Jamb Sill
7	Jamb Leg
8	Jamb Extension
9	Pro-R Guard Fast Flash
10	Pro-R Guard Air Dam
11	Glasstop
12	Impact Glass / Insulated Glass
13	Stucco
14	Sash
15	Brickmold
16	Buck / Framing
17	Glazing - Dow 995
18	'FFI' - Operating Hardware
19	'Centor' - Track
20	'Centor' - Hardware
21	Gasket / Weather Seal
22	Operating Handle
23	Fillet
24	'Centor' Bug Screen System
25	Threshold
100	23 Gauge Pin Nail 1"
100a	23 Gauge Pin Nail 1-3/8"
100b	23 Gauge Pin Nail 2"
100c	23 Gauge Pin Nail
108	#8 X 1 1/2" Wood Screw SS
112	#14 X 2 1/2" Wood Screw SS
112a	#14 X 4" Wood Screw SS
112b	#14 X 3 1/2" Wood Screw SS
112c	#14 X 3 1/4" Wood Screw SS
112d	#14 X 5 1/2" Wood Screw SS
112e	#14 X 1 1/2" Wood Screw SS Pan Head
116	Tapcon 1/4" x 3 1/4" SS
116a	Tapcon 1/4" x 1-3/4" SS Hex
116b	Tapcon 1/4" x 2" SS
116c	Tapcon 1/4" x 4" SS
116d	Tapcon 1/4" x 3-3/4" SS phillips
118	#8 X 1 1/2" Strap Screw SS
212	Strap 1-1/2" x 1-3/4" SS
213	Monarch Z Clip

ALL DIMENSIONS TO BE CHECKED AS PER THE APPLICABLE LIST APPROVALS

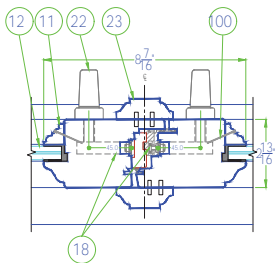
CAS-HANDLE



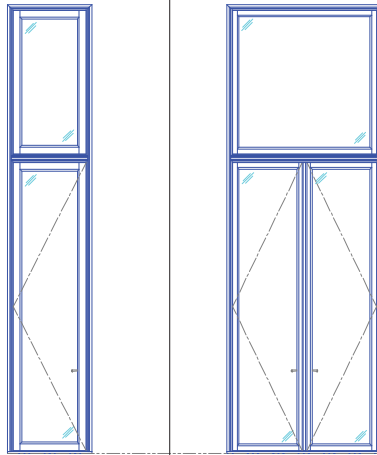
CAS-TRANSOM



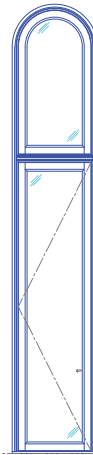
CAS-MEETING STYLE



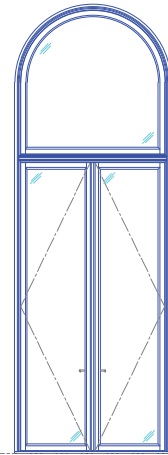
6A TALLEST + TRANSOM 6B



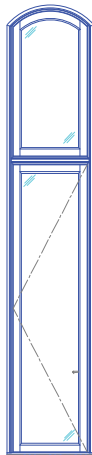
6C



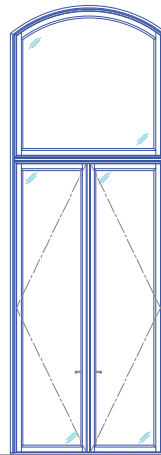
6D



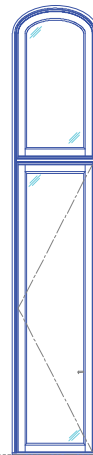
6E



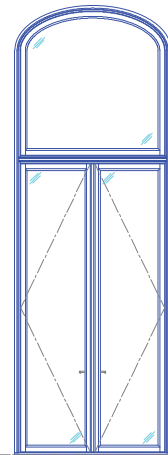
6F



6G



6H



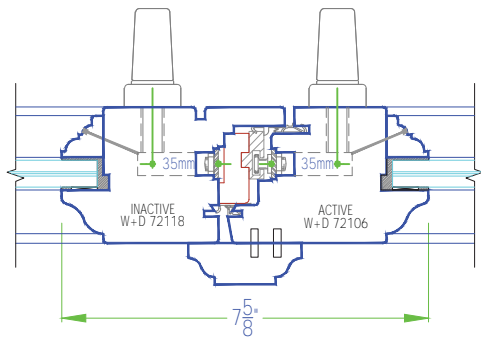
LUXBAUM WINDOWS + DOORS
T: 1.561.684.1500 F:1.561.689.1506



LUXBAUM
WINDOWS + DOORS

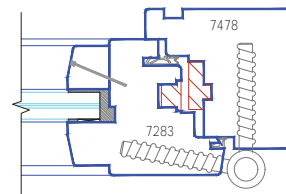
1501 NORTHPOINT PARKWAY , SUITE 101
WEST PALM BEACH, FL 33407 USA

102A



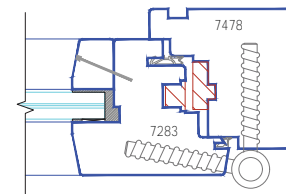
101A

C.M. Profile



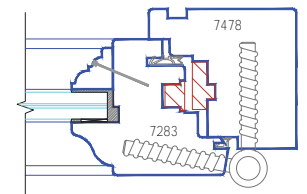
101B

E.T. Profile

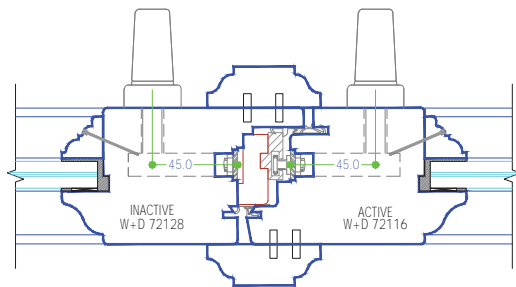


101C

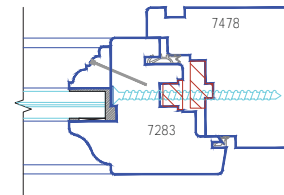
LUX. Profile



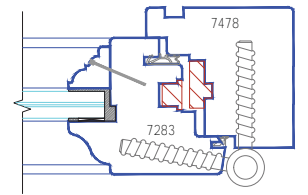
103A



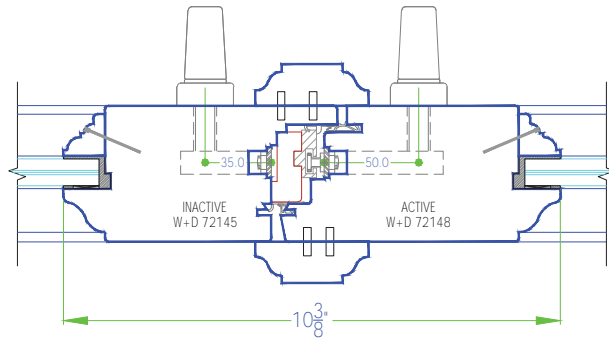
103B



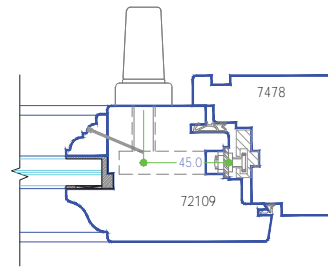
103C



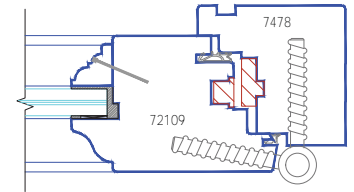
104A



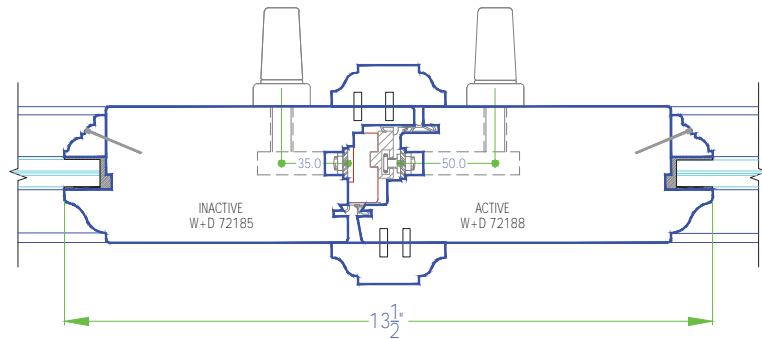
104B



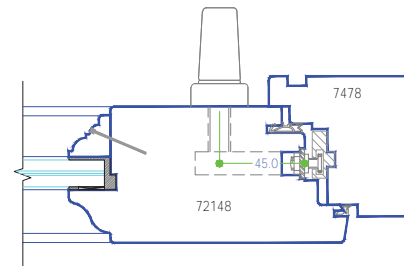
104C



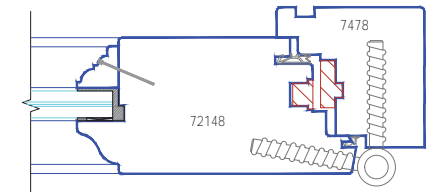
105A



105B



105C

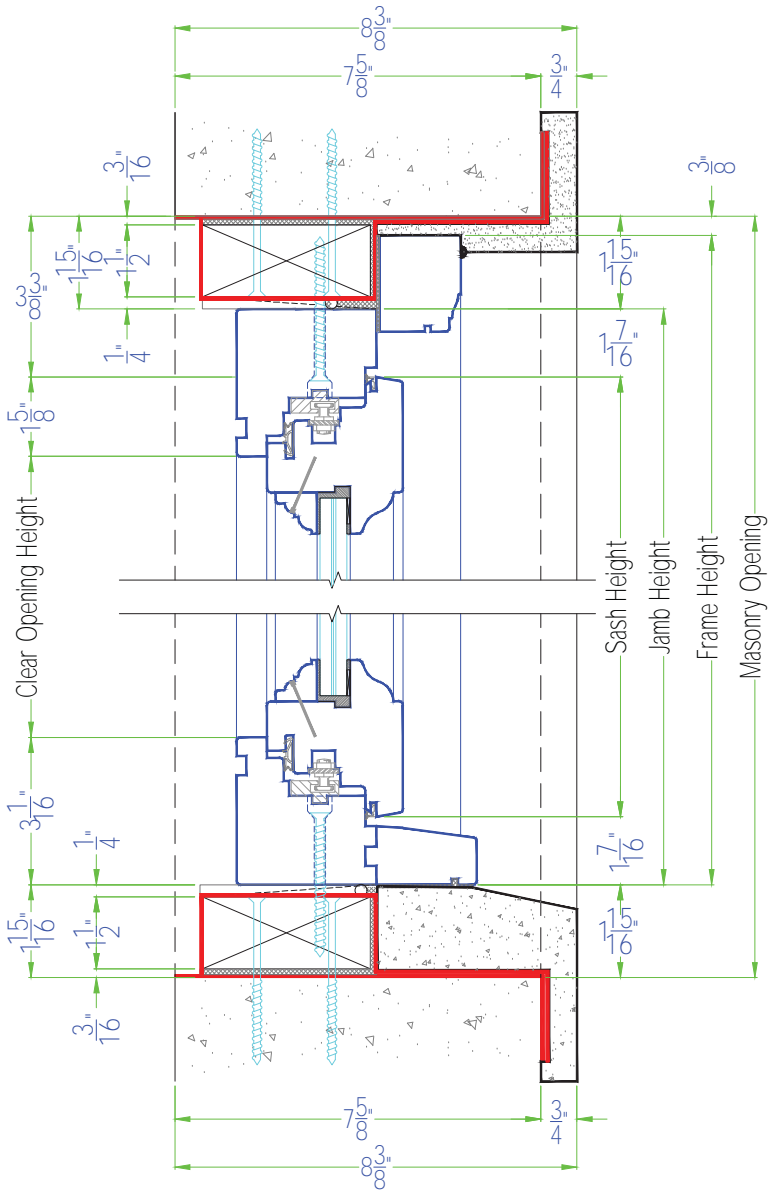


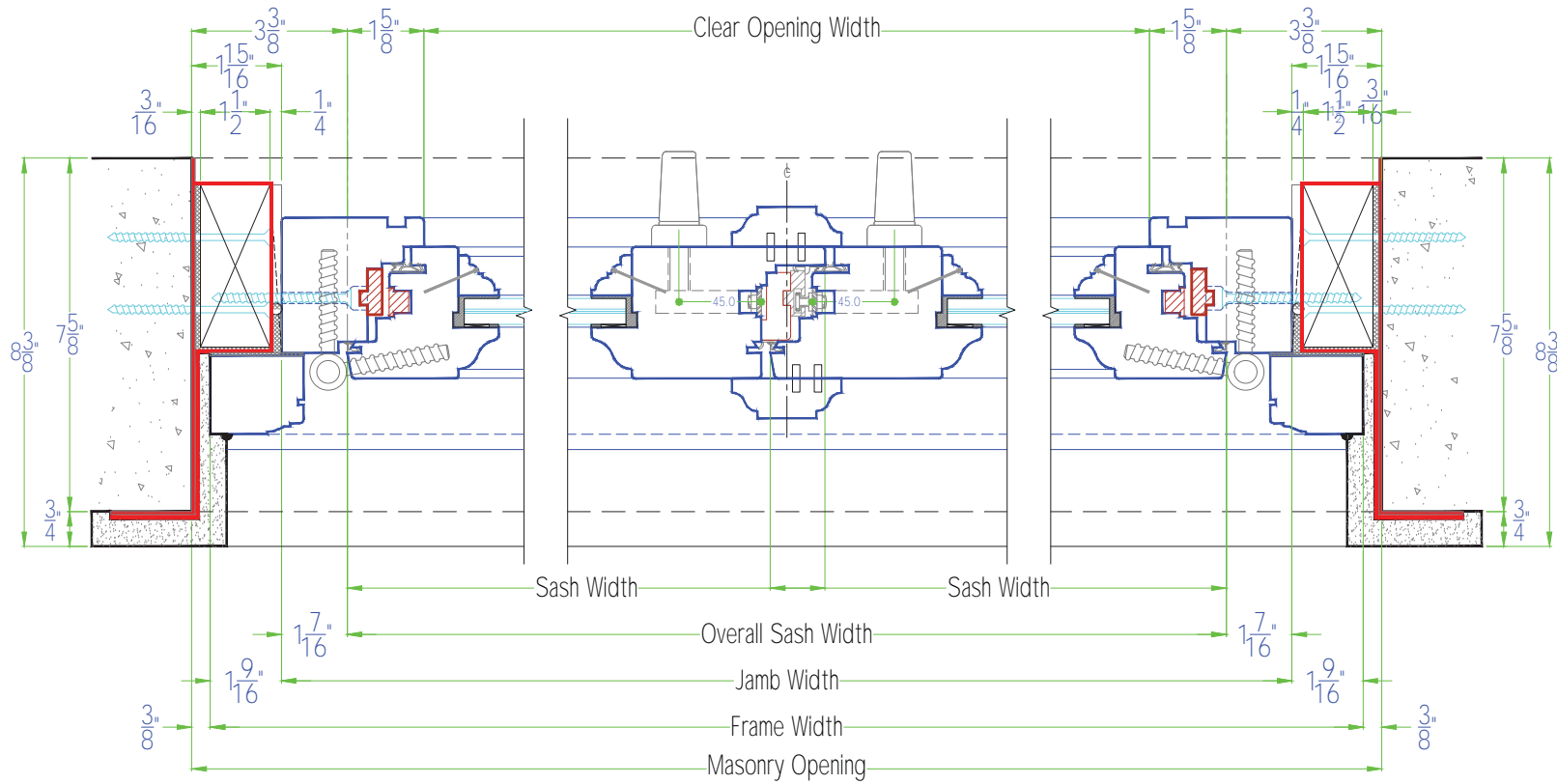
Scale: 3" = 1'-0"

LUXBAUM WINDOWS + DOORS
T: 1.561.684.1500 F:1.561.689.1506



1501 NORTHPOINT PARKWAY , SUITE 101
WEST PALM BEACH, FL 33407 USA



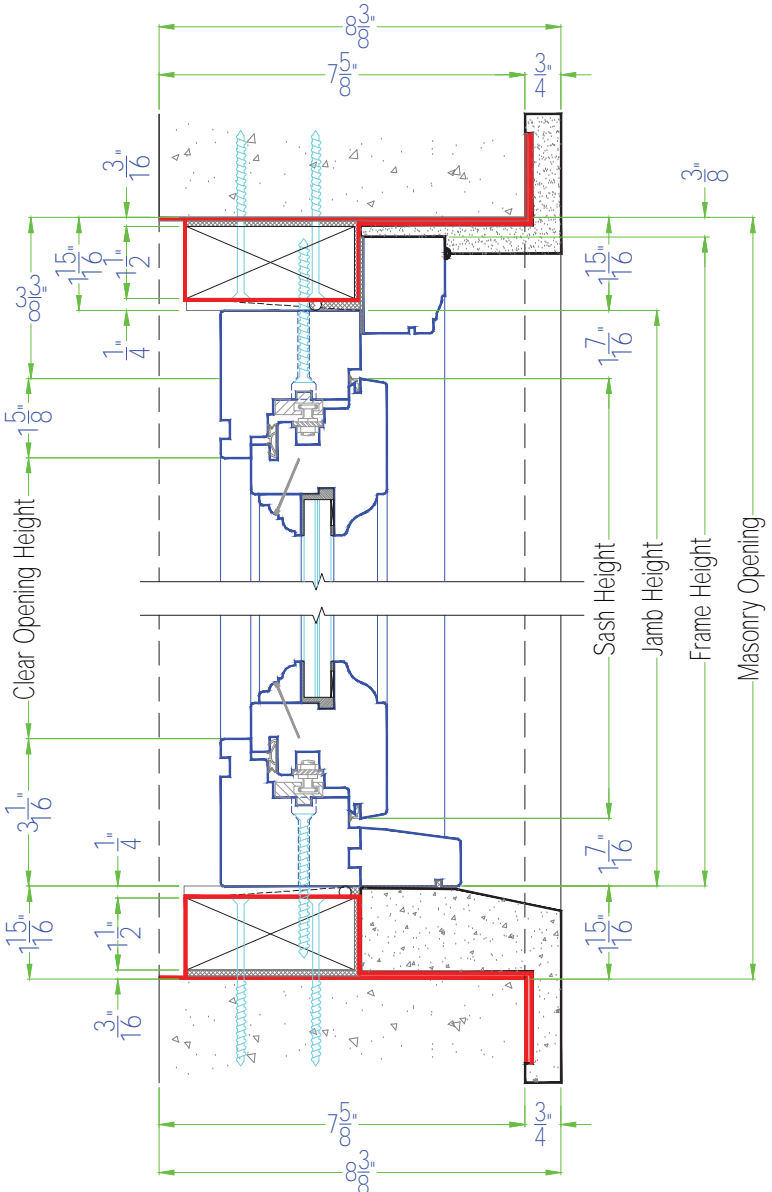


Scale: 3" = 1'-0"

LUXBAUM WINDOWS + DOORS
 T: 1.561.684.1500 F:1.561.689.1506



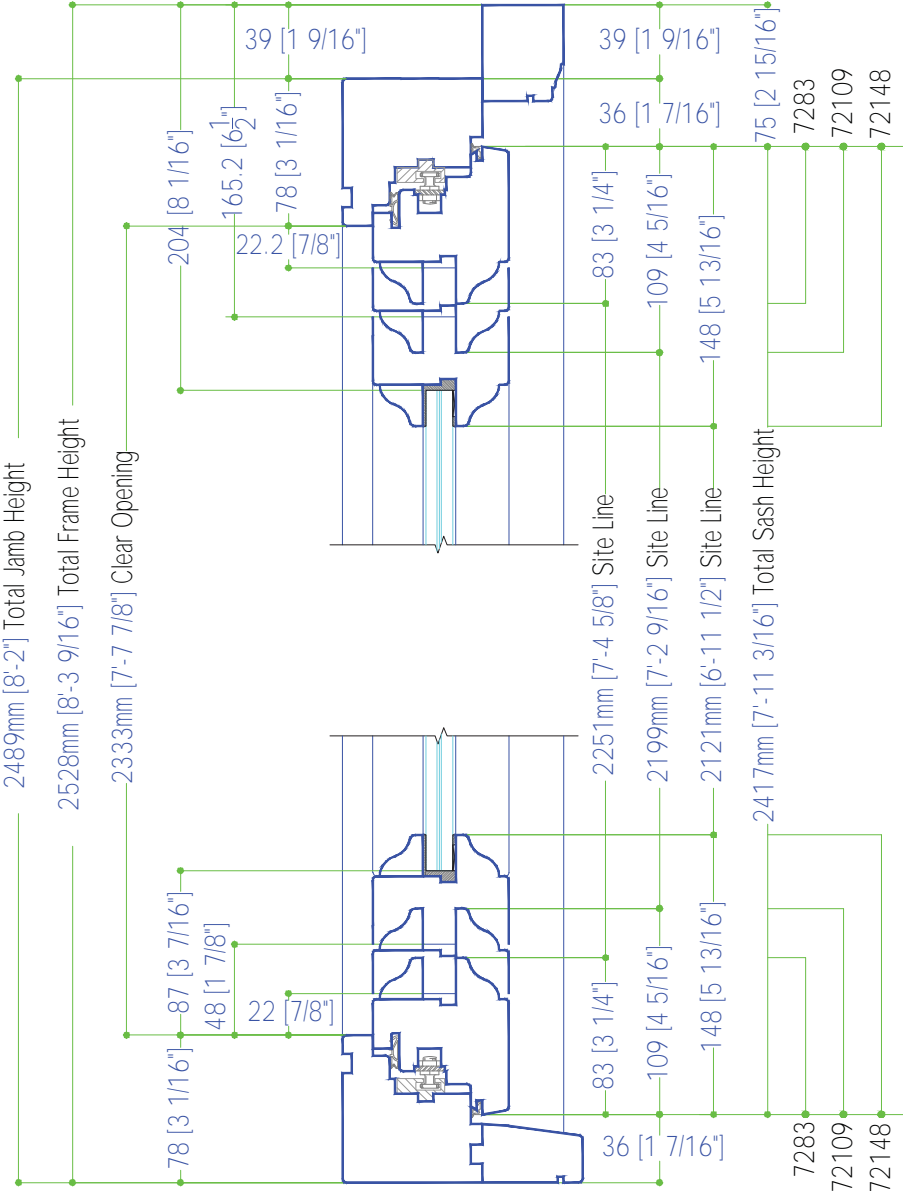
1501 NORTHPOINT PARKWAY , SUITE 101
 WEST PALM BEACH, FL 33407 USA

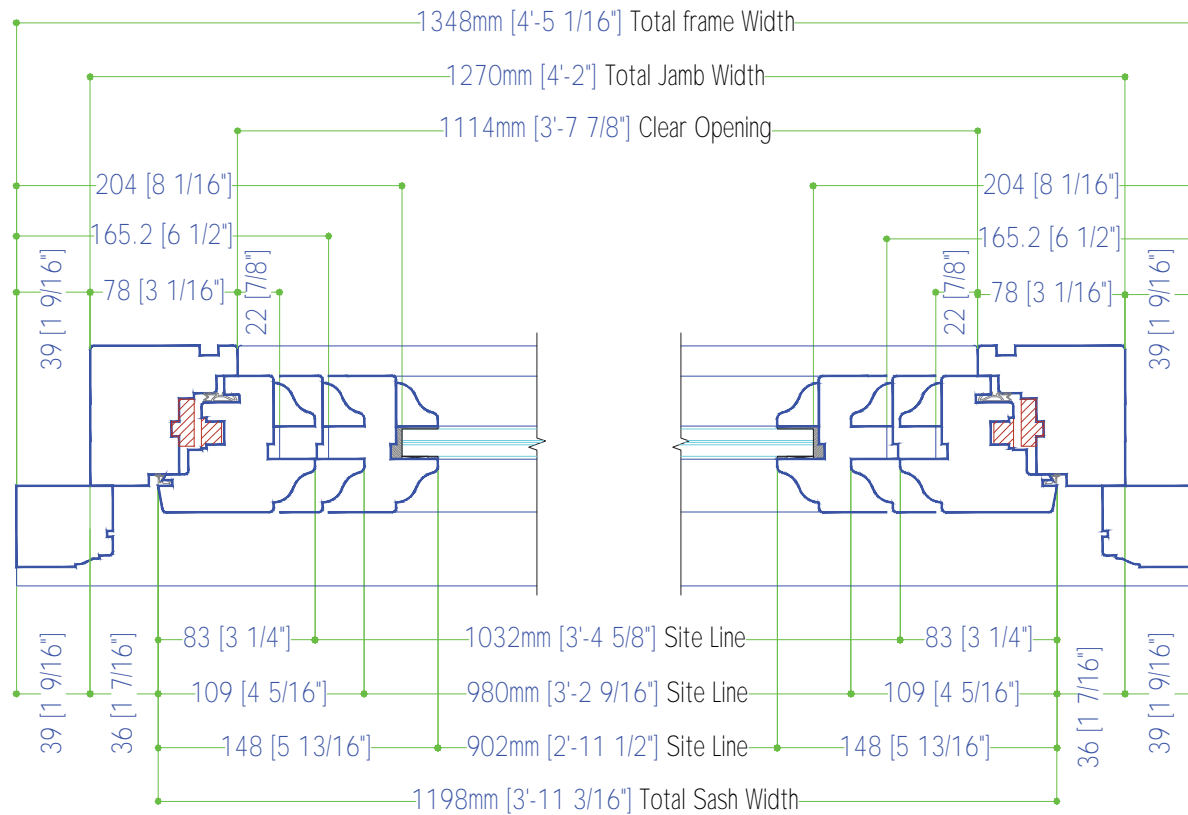


ARCHITECTS' CATALOG

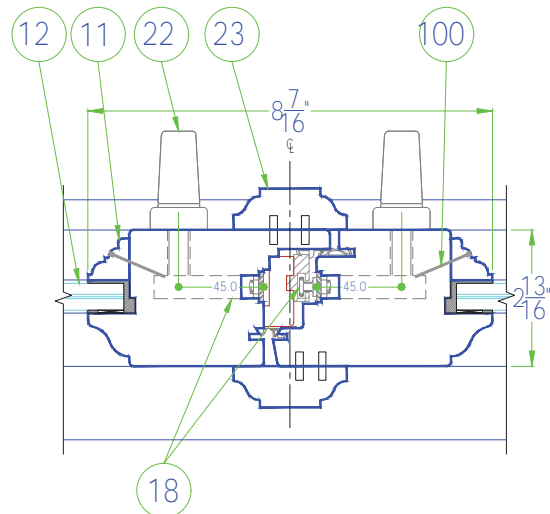
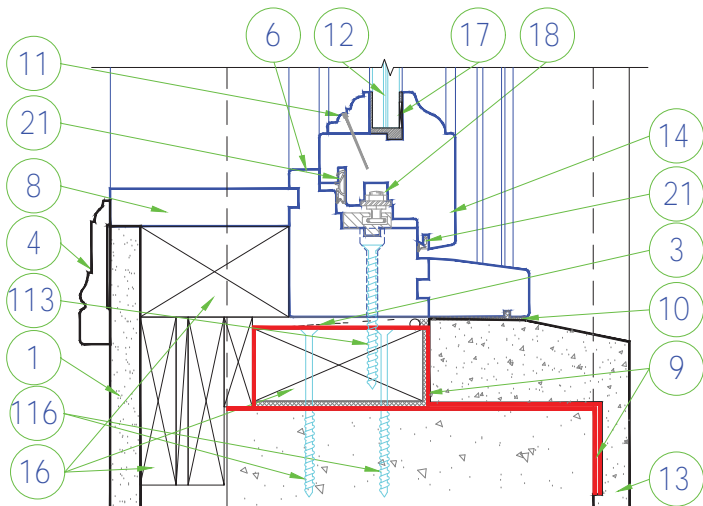
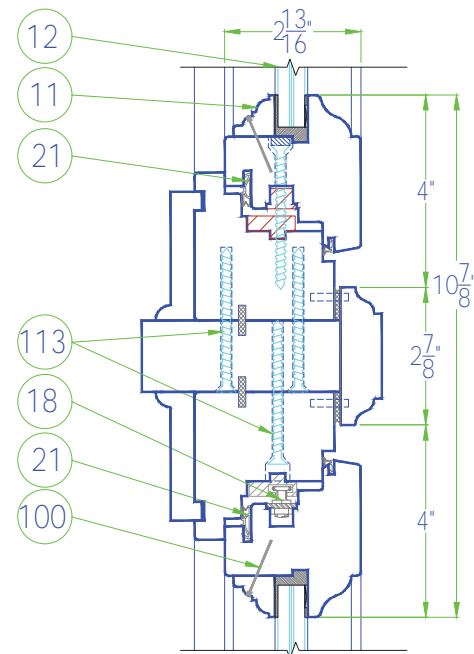
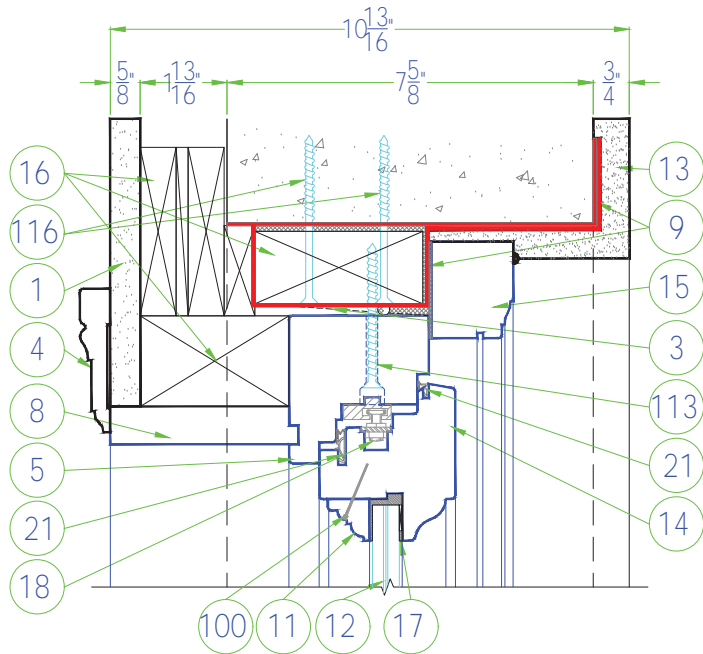
CASEMENT WINDOWS

COMPUTATION TOOL BASED ON 4'-2" x 8'-2" WINDOW



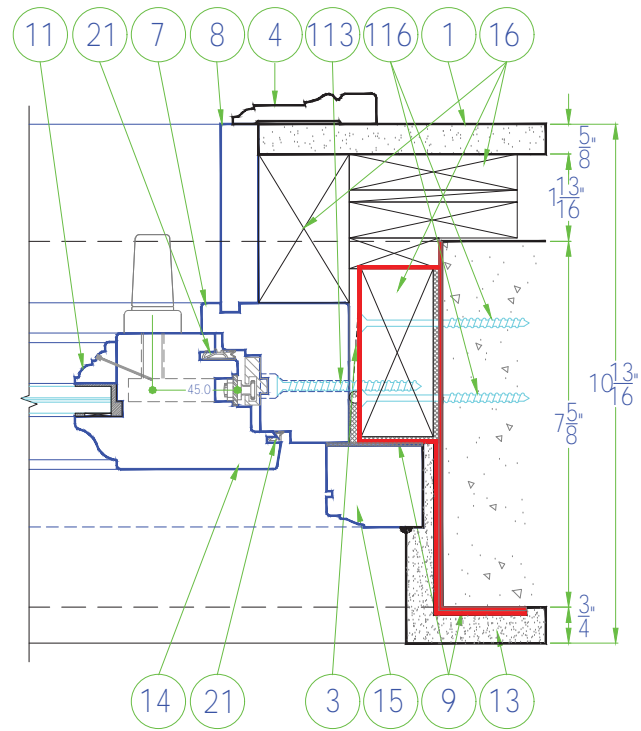
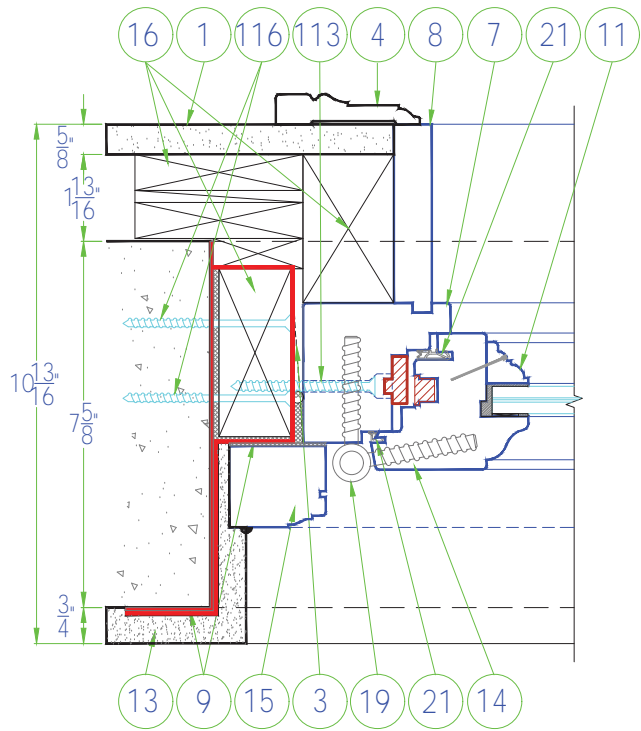


Scale: 3" = 1'-0"



Ⓣ	DESCRIPTION
1	Drywall
2	Framing
3	Shim Shingles Max. 1/4"
4	Casing
5	Jamb Header
6	Jamb Sill
7	Jamb Leg
8	Jamb Extension
9	Pro-R Guard Fast Flash
10	Pro-R Guard Air Dam
11	Glasstop
12	Impact Glass / Insulated Glass
13	Stucco
14	Sash
15	Brickmold
16	Buck / Framing
17	Glazing - Dow 995
18	FFI - Operating Hardware
19	'Centor' - Track
20	'Centor' - Hardware
21	Gasket / Weather Seal
22	Operating Handle
23	Fillet
24	'Centor' Bug Screen System
25	Threshold
100	23 Gauge Pin Nail 1"
100a	23 Gauge Pin Nail 1-3/8"
100b	23 Gauge Pin Nail 2"
100	23 Gauge Pin Nail
108	#8 X 1 1/2" Wood Screw SS
112	#14 X 2 1/2" Wood Screw SS
112a	#14 X 4" Wood Screw SS
112b	#14 X 3 1/2" Wood Screw SS
112c	#14 X 3 1/4" Wood Screw SS
112d	#14 X 5 1/2" Wood Screw SS
112e	#14 X 1 1/2" Wood Screw SS Pan Head
116	Tapcon 1/4" x 3 1/4" SS
116a	Tapcon 1/4" x 1-3/4" SS Hex
116b	Tapcon 1/4" x 2" SS
116c	Tapcon 1/4" x 4" SS
116d	Tapcon 1/4" x 3-3/4" SS philips
118	#8 X 1 1/2" Strap Screw SS
212	Strap 1-1/2" x 1-3/4" SS
213	Monarch Z Clip

ALL DIMENSIONS TO BE FACED UNLESS NOTED OTHERWISE

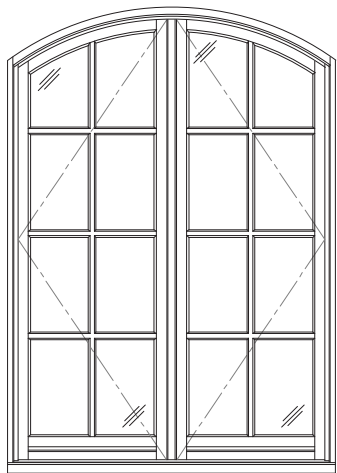


Scale: 3" = 1'-0"

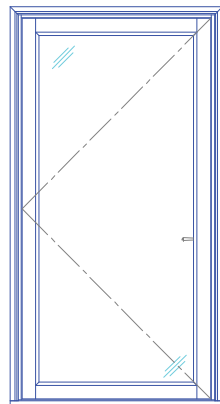
LUXBAUM WINDOWS + DOORS
 T: 1.561.684.1500 F:1.561.689.1506



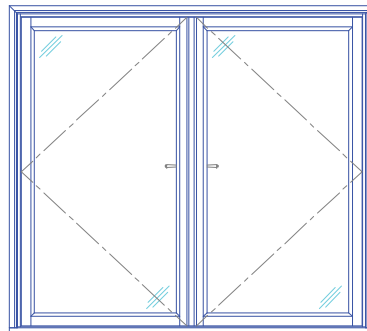
1501 NORTHPOINT PARKWAY , SUITE 101
 WEST PALM BEACH, FL 33407 USA



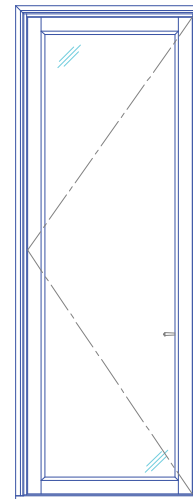
Casement Window



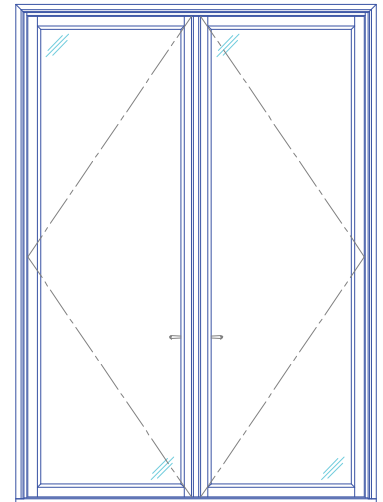
Single Casement Widest
4'-2" x 8'-2"



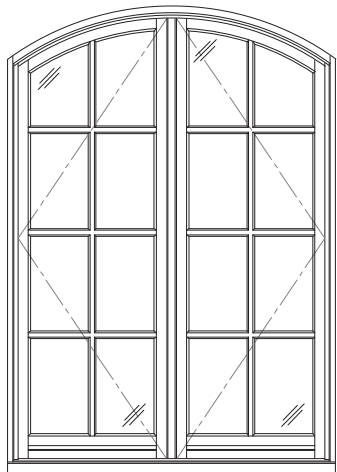
Double Casement Widest
7'-2" x 6'-8"



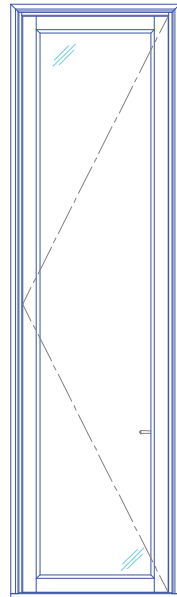
Single Casement Wide
3'-8" x 10'-2"



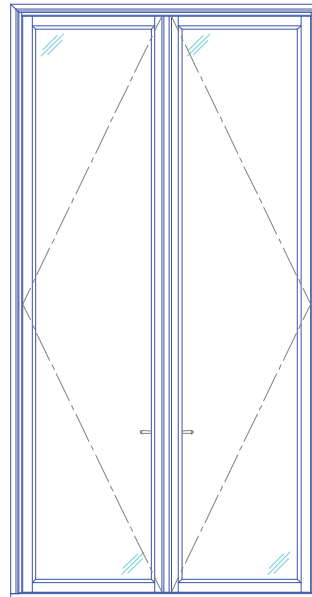
Double Casement Wide
7'-3" x 10'-3"



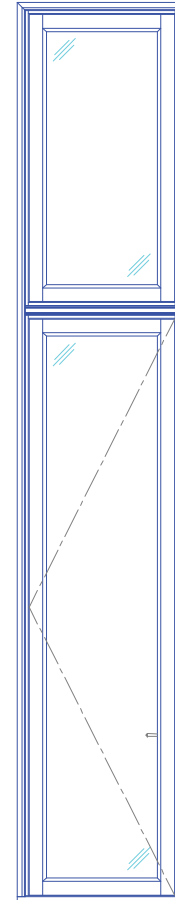
Casement Window



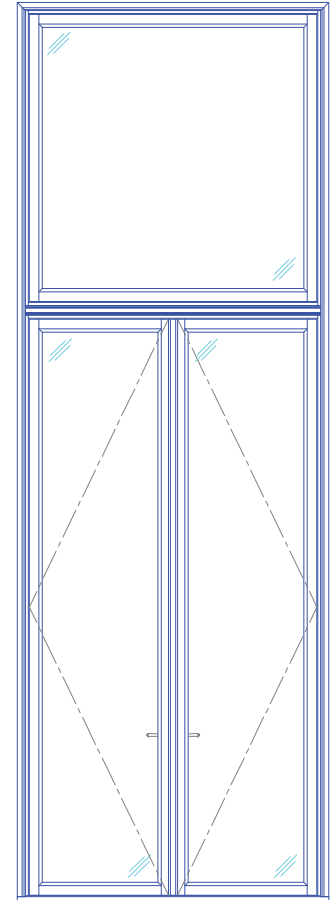
Single Casement Tallest
3'-3" x 12'-2"



Double Casement Tallest
6'-2" x 12'-2"



Single Casement with Transom
3'-3" x 18'-4"



Double Casement with Transom
6'-2" x 18'-4"



Scale: 1/4" = 1'-0"

LUXBAUM WINDOWS + DOORS
T: 1.561.684.1500 F:1.561.689.1506



LUXBAUM
WINDOWS + DOORS

1501 NORTHPOINT PARKWAY , SUITE 101
WEST PALM BEACH, FL 33407 USA