

LUXBAUM WINDOWS + DOORS
T: 1.561.684.1500 F:1.561.689.1506
1501 NORTHPOINT PARKWAY, SUITE 101
WEST PALM BEACH, FL 33407 USA



FIXED CASEMENT WINDOW
ARCHITECTS' CATALOG

Laszlo Wagner

CEO & Founder
laszlo.wagner@luxbaum.com

Putu Udayana

General Manager

Mogo Yusina Kadena

Assistant Manager

Ketut Rai Sami

Production Estimator

Judy Luca

Controller
judy.luca@luxbaum.com

Judy Wilber

Executive Assistant - Project Manager
judy.wilber@luxbaum.com

Andrea Mendoza

CAD Manager - Shop Drawings
andrea.mendoza@luxbaum.com

David Vander Wiele

Senior Installation Manager
dave.vanderviele@luxbaum.com

Peter Stalder

Installation Manager
peter.stalder@luxbaum.com

www.luxbaum.com

LUXBAUM WINDOWS + DOORS
T: 1.561.684.1500 F: 1.561.689.1506

1501 NORTHPOINT PARKWAY, SUITE 101, WEST PALM BEACH, FL 33407 USA

ARCHITECTS' CATALOG

FIXED CASEMENT WINDOW

Scale: 1-1/2" = 1'-0"

7A

WIDEST

7B

7C

7D

7E

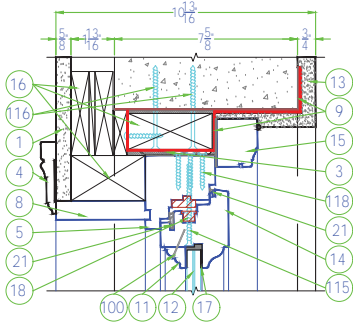
7F

7G

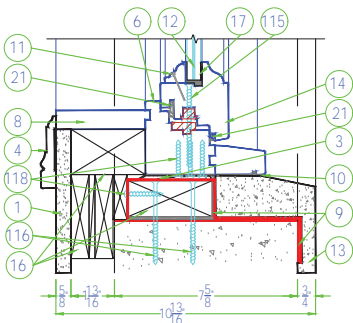
7H

Ⓢ	DESCRIPTION
1	Drywall
2	Framing
3	Shim Shingles Max. 1/4"
4	Casing
5	Jamb Header
6	Jamb Sill
7	Jamb Leg
8	Jamb Extension
9	Pro-R Guard Fast Flash
10	Pro-R Guard Air Dam
11	Glasstop
12	Impact Glass / Insulated Glass
13	Stucco
14	Sash
15	Brickmold
16	Buck / Framing
17	Glazing - Dow 995
18	'FFI' - Operating Hardware
19	'Centor' - Track
20	'Centor' - Hardware
21	Gasket / Weather Seal
22	Operating Handle
23	Fillet
24	'Centor' Bug Screen System
25	Threshold
100	23 Gauge Pin Nail 1"
100a	23 Gauge Pin Nail 1-3/8"
100b	23 Gauge Pin Nail 2"
100	23 Gauge Pin Nail
108	#8 X 1 1/2" Wood Screw SS
112	#14 X 2 1/2" Wood Screw SS
112a	#14 X 4" Wood Screw SS
112b	#14 X 3 1/2" Wood Screw SS
112c	#14 X 3 1/4" Wood Screw SS
112D	#14 X 5 1/2" Wood Screw SS
112e	#14 X 1 1/2" Wood Screw SS Pan Head
116	Tapcon 1/4" x 3 1/4" SS
116a	Tapcon 1/4" x 1-3/4" SS Hex
116b	Tapcon 1/4" x 2" SS
116c	Tapcon 1/4" x 4" SS
116d	Tapcon 1/4" x 3-3/4" SS philips
118	#8 X 1 1/2" Strap Screw SS
212	Strap 1-1/2" x 1-3/4" SS
213	Monarch Z Clip

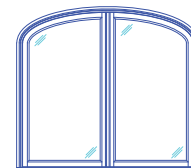
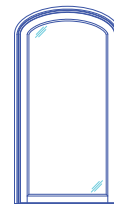
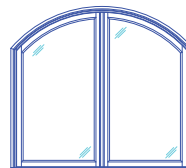
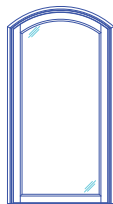
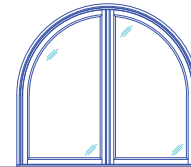
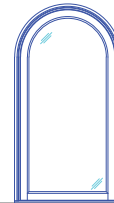
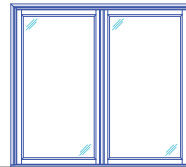
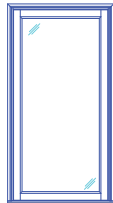
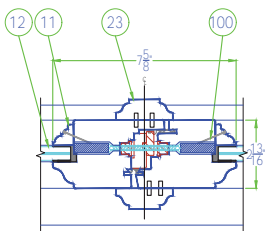
FIX-HEADER



FIX-SILL

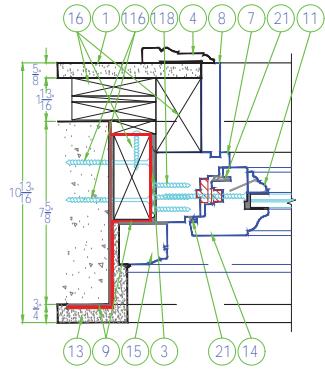


FIX-MEETING STYLE

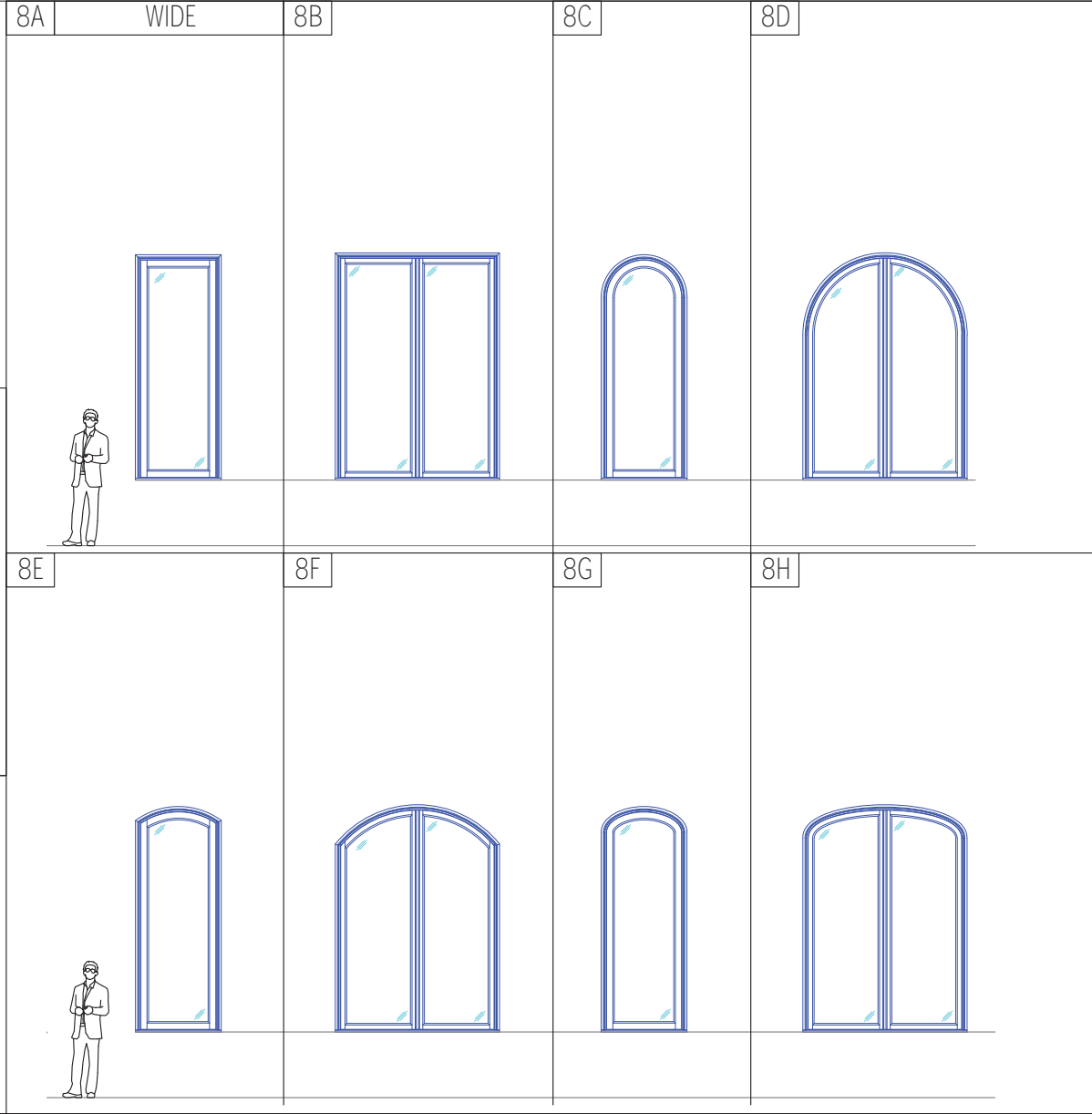
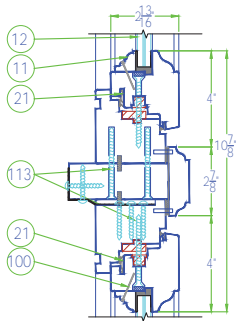


ALL DIMENSIONS ARE TO FACE UNLESS OTHERWISE SPECIFIED.

FIX-HINGE



FIX-TRANSOM



LUXBAUM WINDOWS + DOORS
 T: 1.561.684.1500 F:1.561.689.1506



LUXBAUM
 WINDOWS + DOORS

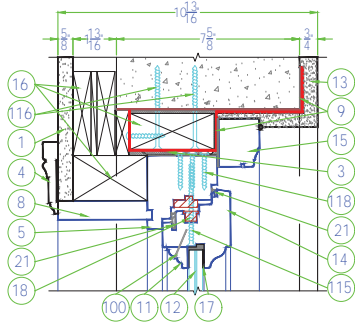
1501 NORTHPOINT PARKWAY , SUITE 101
 WEST PALM BEACH, FL 33407 USA

ARCHITECTS' CATALOG

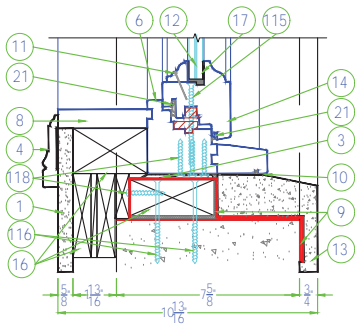
FIXED CASEMENT WINDOW

Scale: 1-1/2" = 1'-0"

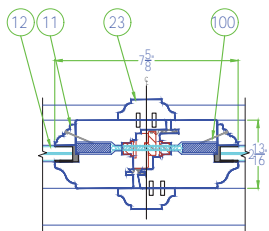
FIX-HEADER



FIX-SILL



FIX-MEETING STYLE



9A

TALLEST

9B

9C

9D

9E

9F

9G

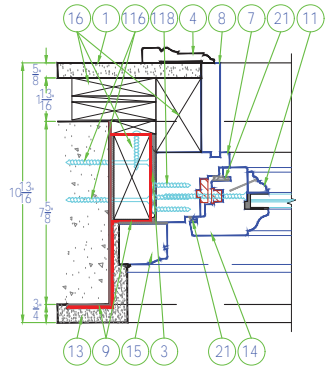
9H



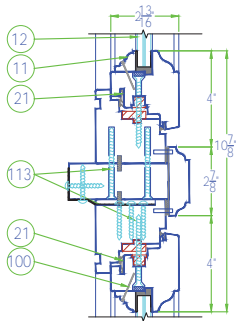
①	DESCRIPTION
1	Drywall
2	Framing
3	Shim Shingles Max. 1/4"
4	Casing
5	Jamb Header
6	Jamb Sill
7	Jamb Leg
8	Jamb Extension
9	Pro-R Guard Fast Flash
10	Pro-R Guard Air Dam
11	Glasstop
12	Impact Glass / Insulated Glass
13	Stucco
14	Sash
15	Brickmold
16	Buck / Framing
17	Glazing - Dow 995
18	FF' - Operating Hardware
19	'Centor' - Track
20	'Centor' - Hardware
21	Gasket / Weather Seal
22	Operating Handle
23	Fillet
24	'Centor' Bug Screen System
25	Threshold
100	23 Gauge Pin Nail 1"
100a	23 Gauge Pin Nail 1-3/8"
100b	23 Gauge Pin Nail 2"
100c	23 Gauge Pin Nail
108	#8 X 1 1/2" Wood Screw SS
112	#14 X 2 1/2" Wood Screw SS
112a	#14 X 4" Wood Screw SS
112b	#14 X 3 1/2" Wood Screw SS
112c	#14 X 3 1/4" Wood Screw SS
112d	#14 X 5 1/2" Wood Screw SS
112e	#14 X 1 1/2" Wood Screw SS Pan Head
116	Tapcon 1/4" x 3 1/4" SS
116a	Tapcon 1/4" x 1-3/4" SS Hex
116b	Tapcon 1/4" x 2" SS
116c	Tapcon 1/4" x 4" SS
116d	Tapcon 1/4" x 3-3/4" SS philips
118	#8 X 1 1/2" Strap Screw SS
212	Strap 1-1/2" x 1-3/4" SS
213	Monarch Z Clip

ALL DIMENSIONS TO BE SELECTED AS PER THE APPLICABLE I.D. APPROVALS.

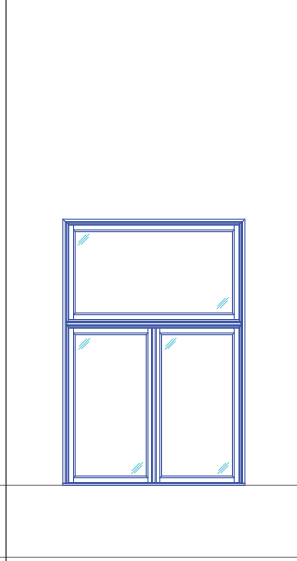
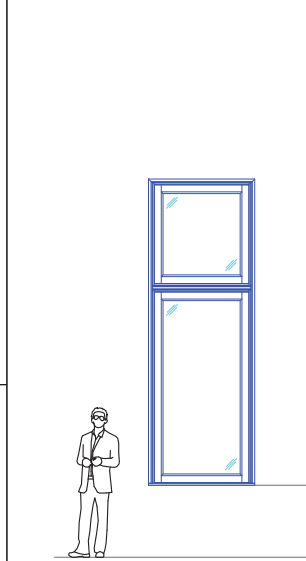
FIX-HINGE



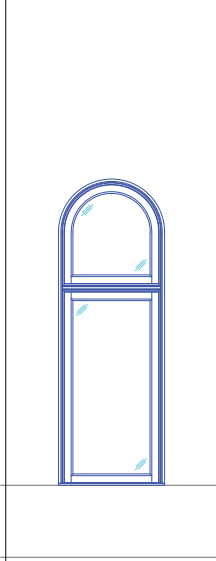
FIX-TRANSOM



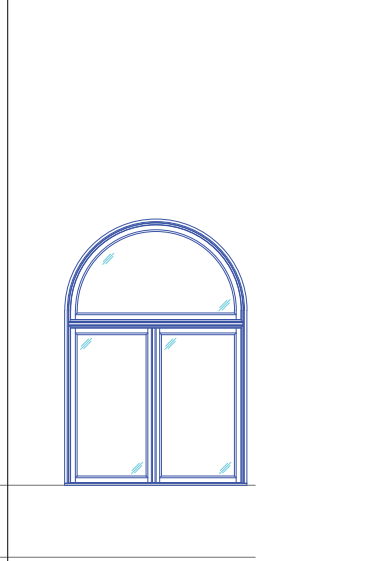
10A WIDEST+TRANSOM 10B



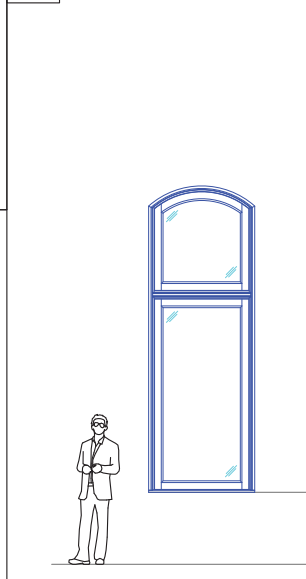
10C



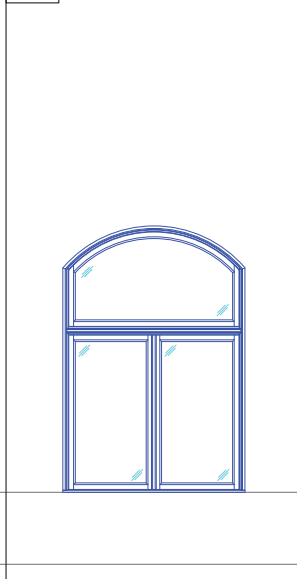
10D



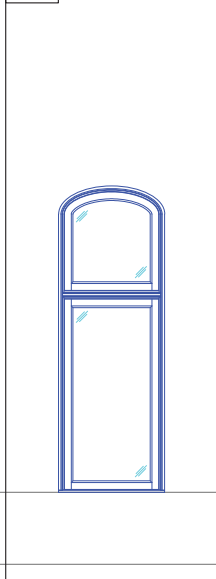
10E



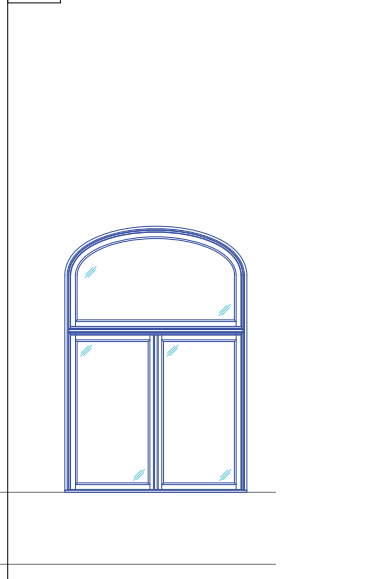
10F



10G



10H



LUXBAUM WINDOWS + DOORS
 T: 1.561.684.1500 F:1.561.689.1506



LUXBAUM
 WINDOWS + DOORS

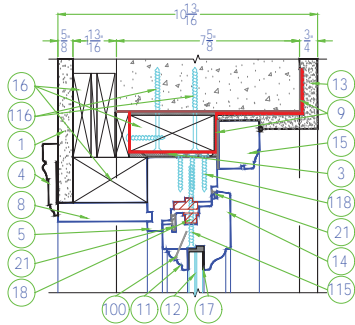
1501 NORTHPOINT PARKWAY , SUITE 101
 WEST PALM BEACH, FL 33407 USA

ARCHITECTS' CATALOG

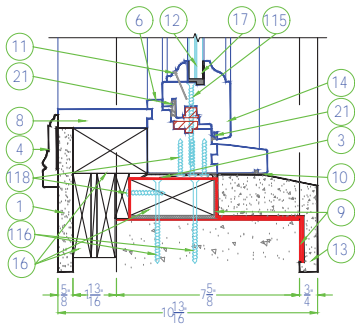
FIXED CASEMENT WINDOW

Scale: 1-1/2" = 1'-0"

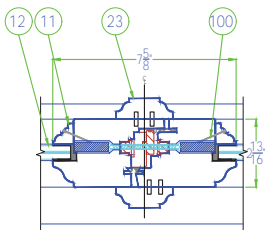
FIX-HEADER



FIX-SILL



FIX-MEETING STYLE

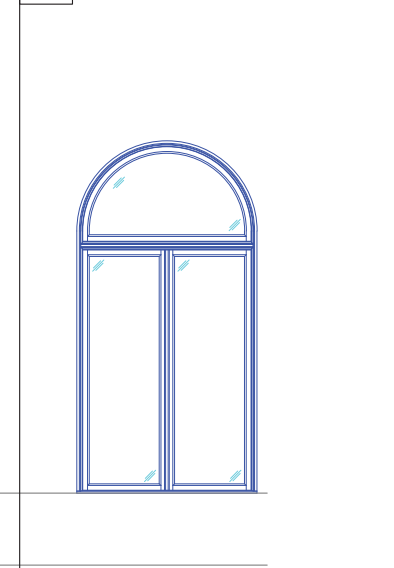
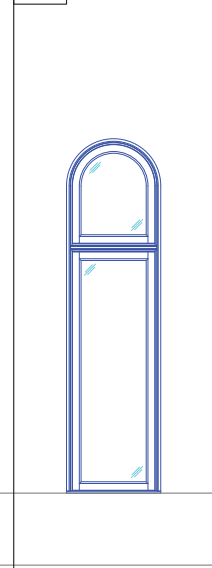
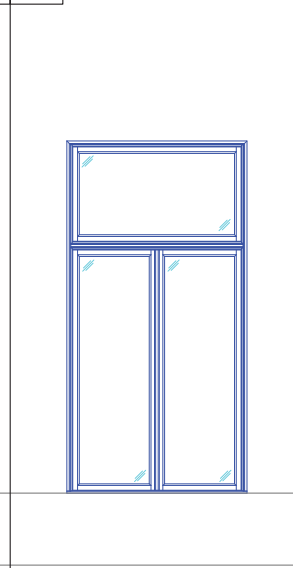
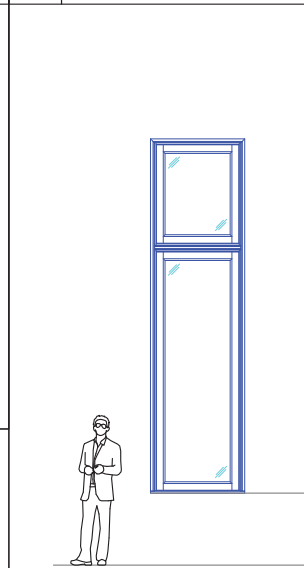


11A WIDE+TRANSOM

11B

11C

11D

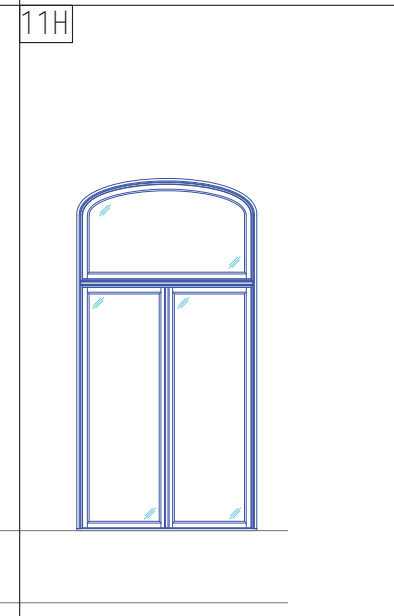
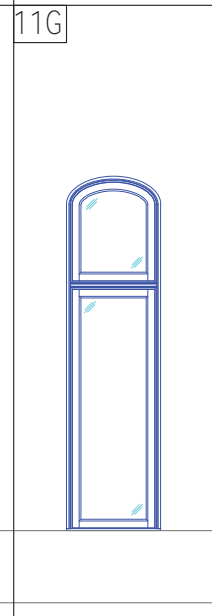
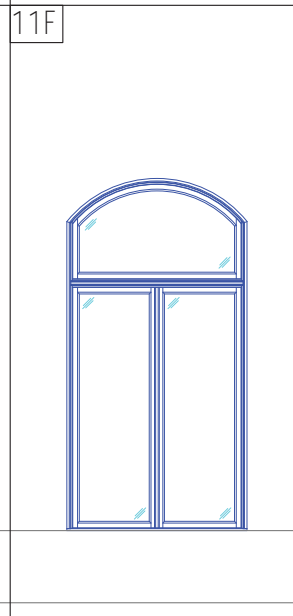
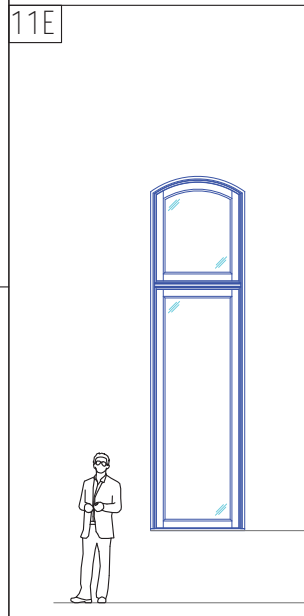


11E

11F

11G

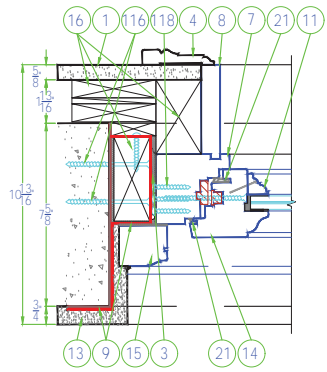
11H



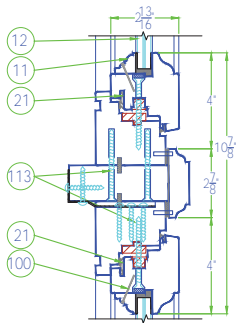
①	DESCRIPTION
1	Drywall
2	Framing
3	Shim Shingles Max. 1/4"
4	Casing
5	Jamb Header
6	Jamb Sill
7	Jamb Leg
8	Jamb Extension
9	Pro-R Guard Fast Flash
10	Pro-R Guard Air Dam
11	Glasstop
12	Impact Glass / Insulated Glass
13	Stucco
14	Sash
15	Brickmold
16	Buck / Framing
17	Glazing - Dow 995
18	'FFI' - Operating Hardware
19	'Centor' - Track
20	'Centor' - Hardware
21	Gasket / Weather Seal
22	Operating Handle
23	Fillet
24	'Centor' Bug Screen System
25	Threshold
100	23 Gauge Pin Nail 1"
100a	23 Gauge Pin Nail 1-3/8"
100b	23 Gauge Pin Nail 2"
100	23 Gauge Pin Nail
108	#8 X 1 1/2" Wood Screw SS
112	#14 X 2 1/2" Wood Screw SS
112a	#14 X 4" Wood Screw SS
112b	#14 X 3 1/2" Wood Screw SS
112c	#14 X 3 1/4" Wood Screw SS
112d	#14 X 5 1/2" Wood Screw SS
112e	#14 X 1 1/2" Wood Screw SS Pan Head
116	Tapcon 1/4" x 3 1/4" SS
116a	Tapcon 1/4" x 1-3/4" SS Hex
116b	Tapcon 1/4" x 2" SS
116c	Tapcon 1/4" x 4" SS
116d	Tapcon 1/4" x 3-3/4" SS philips
118	#8 X 1 1/2" Strap Screw SS
212	Strap 1-1/2" x 1-3/4" SS
213	Monarch Z Clip

ALL REGULATORY TO BE SELECTED AS PER THE APPLICABLE LIST OF APPROVALS

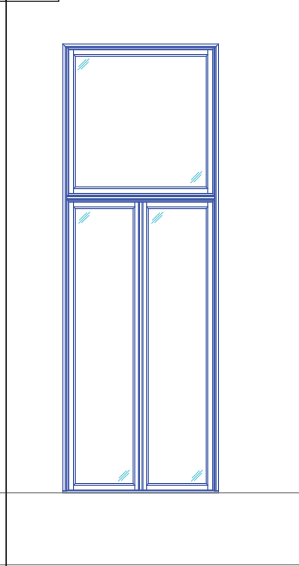
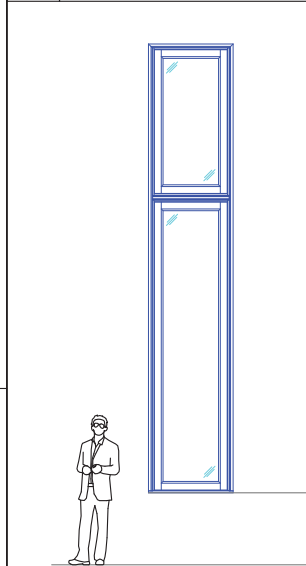
FIX-HINGE



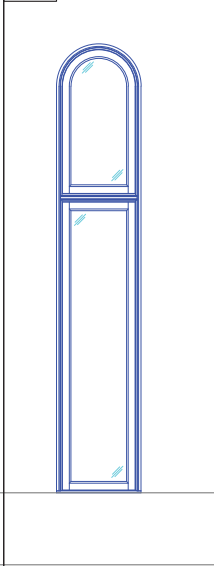
FIX-TRANSOM



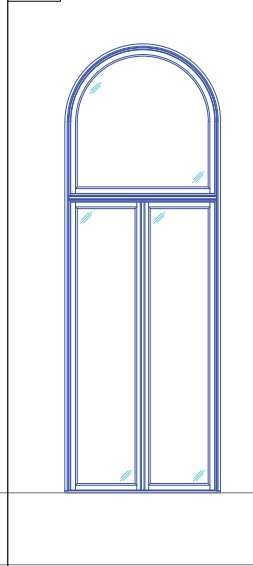
12A TALLEST+TRANSOM 12B



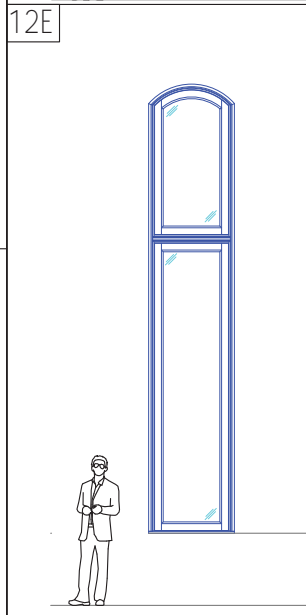
12C



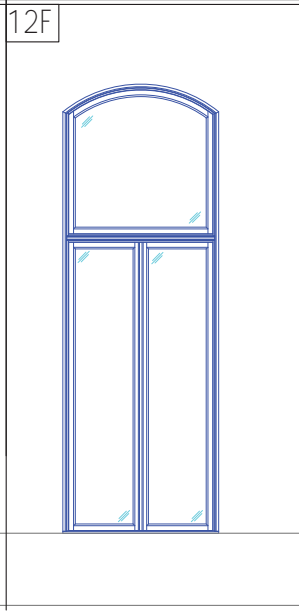
12D



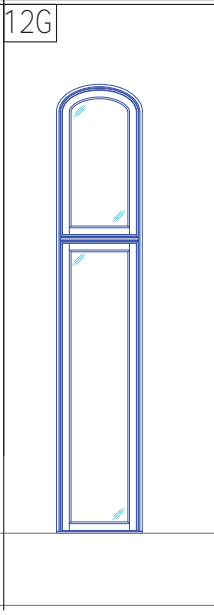
12E



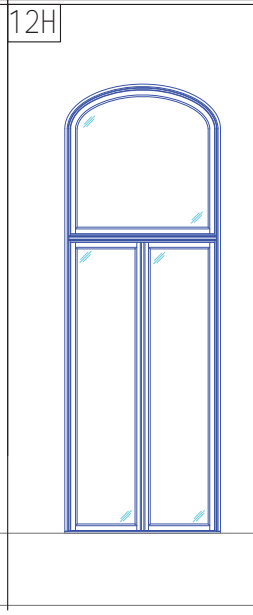
12F



12G



12H



LUXBAUM WINDOWS + DOORS
T: 1.561.684.1500 F:1.561.689.1506

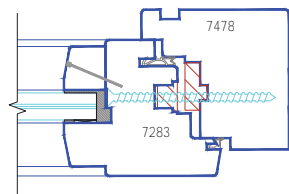


LUXBAUM
WINDOWS + DOORS

1501 NORTHPOINT PARKWAY , SUITE 101
WEST PALM BEACH, FL 33407 USA

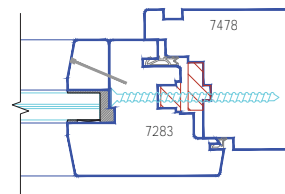
101A

C.M. Profile



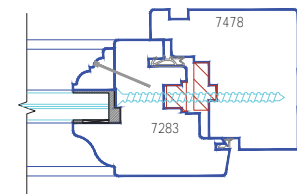
101B

E.T. Profile

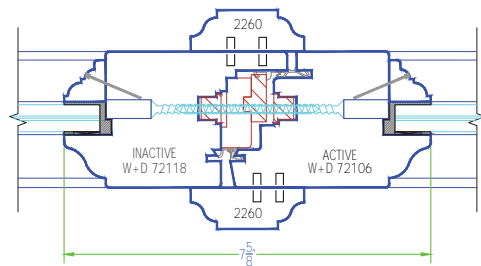


101C

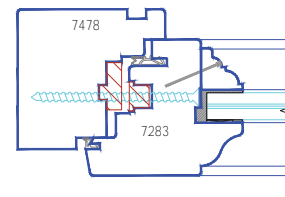
LUX. Profile



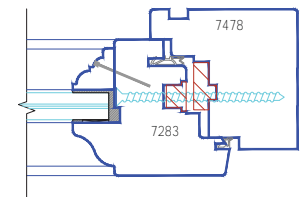
102A



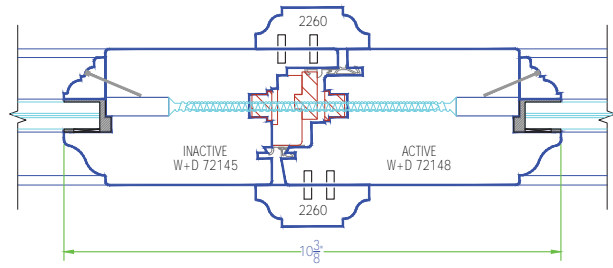
102B



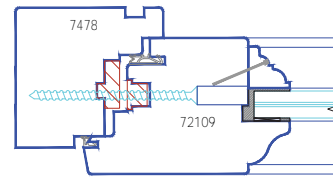
102C



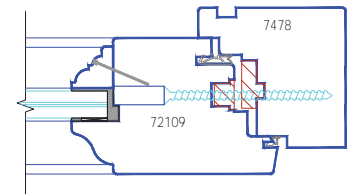
103A



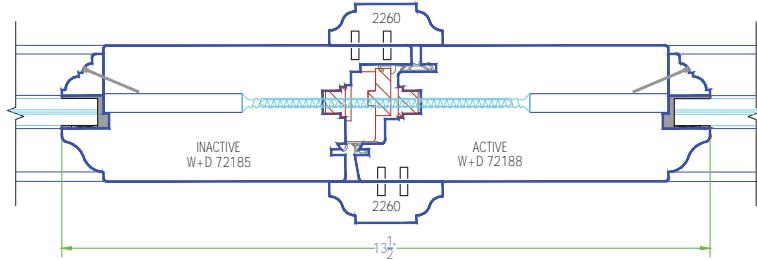
103B



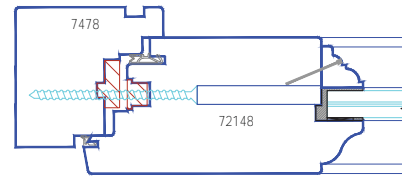
103C



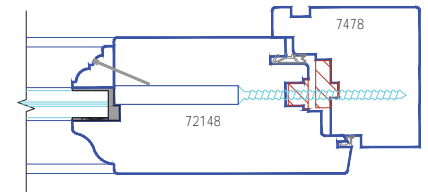
104A



104B



104C



Scale: 3" = 1'-0"

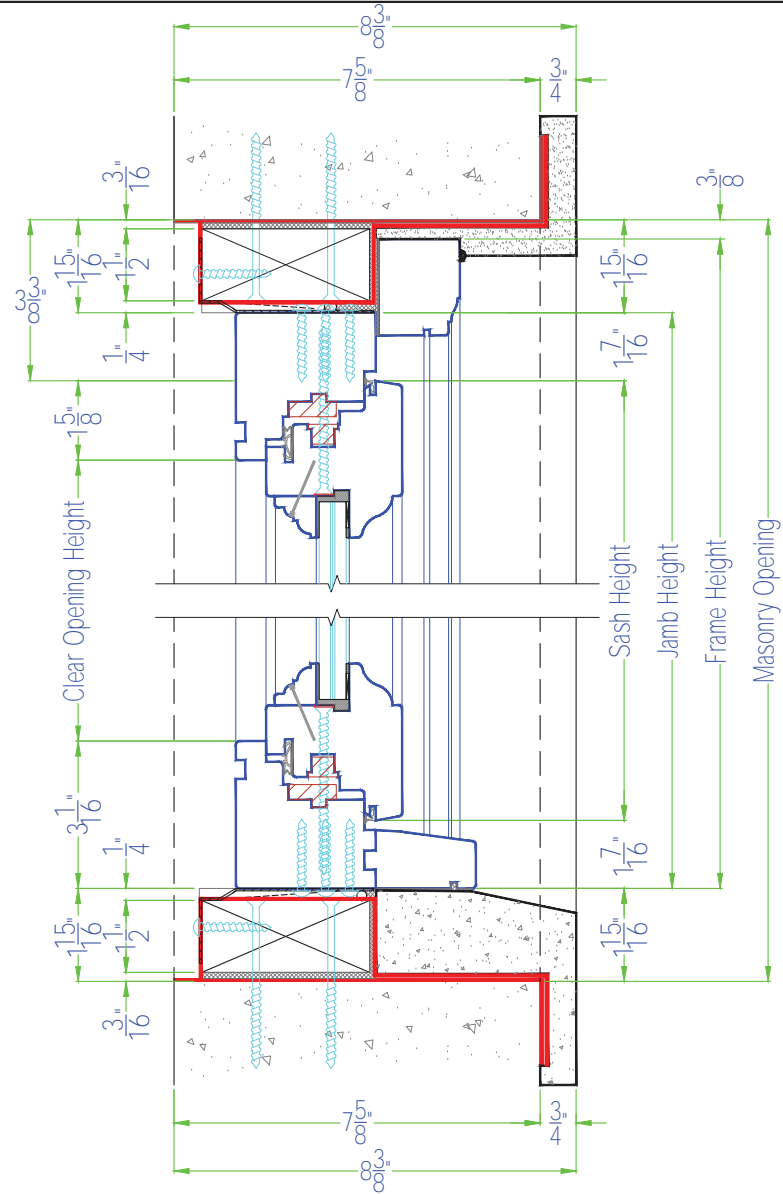
LUXBAUM WINDOWS + DOORS
T: 1.561.684.1500 F:1.561.689.1506

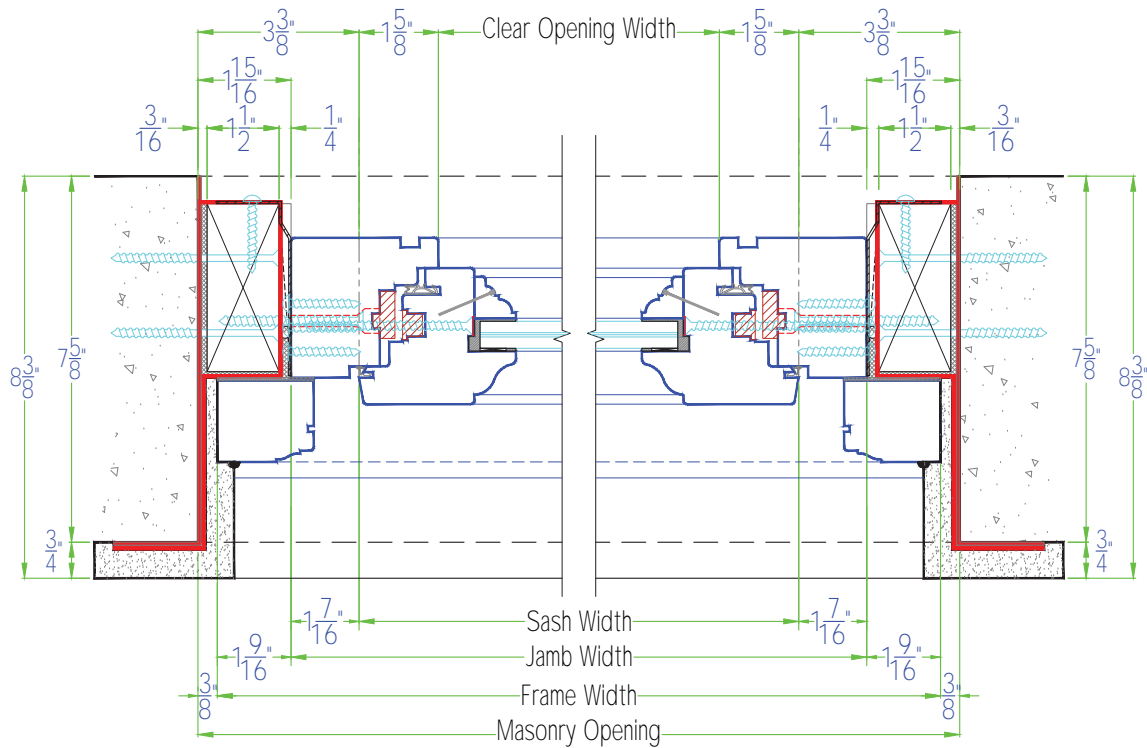


LUXBAUM
WINDOWS + DOORS

1501 NORTHPOINT PARKWAY , SUITE 101
WEST PALM BEACH, FL 33407 USA

ARCHITECTS' CATALOG
FIXED CASEMENT WINDOW



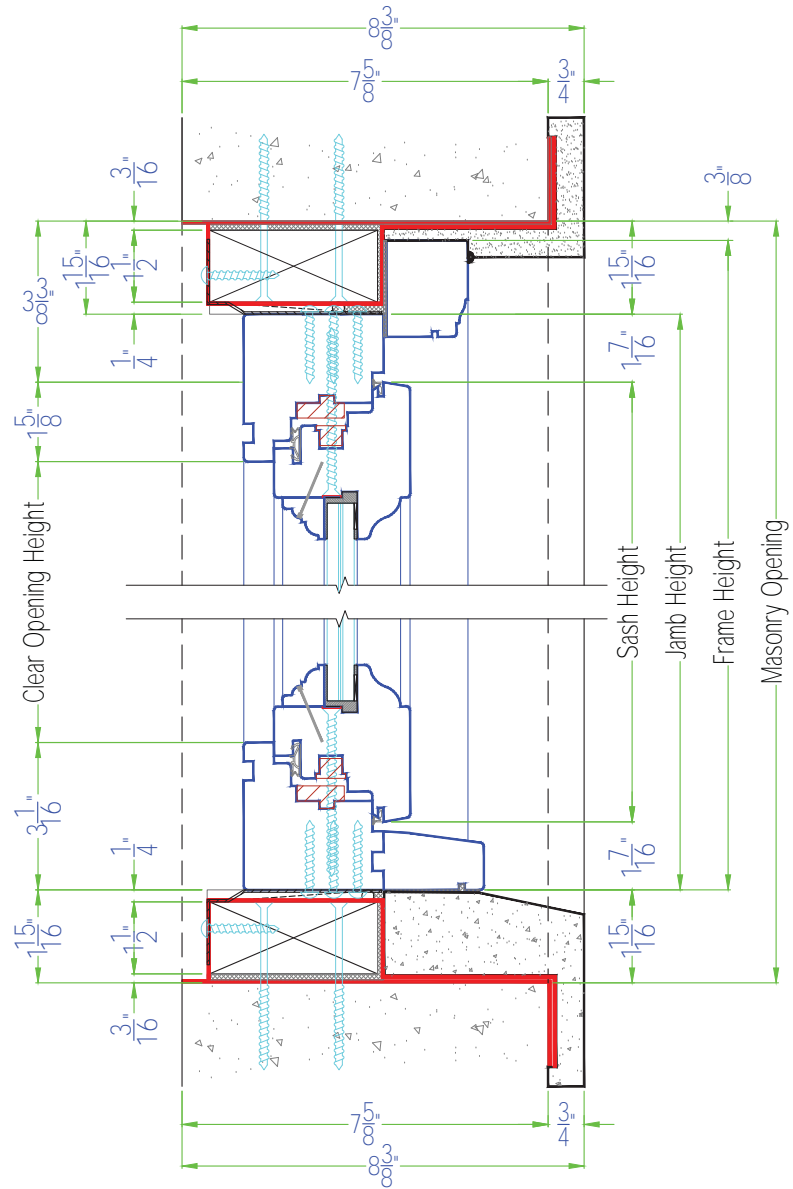


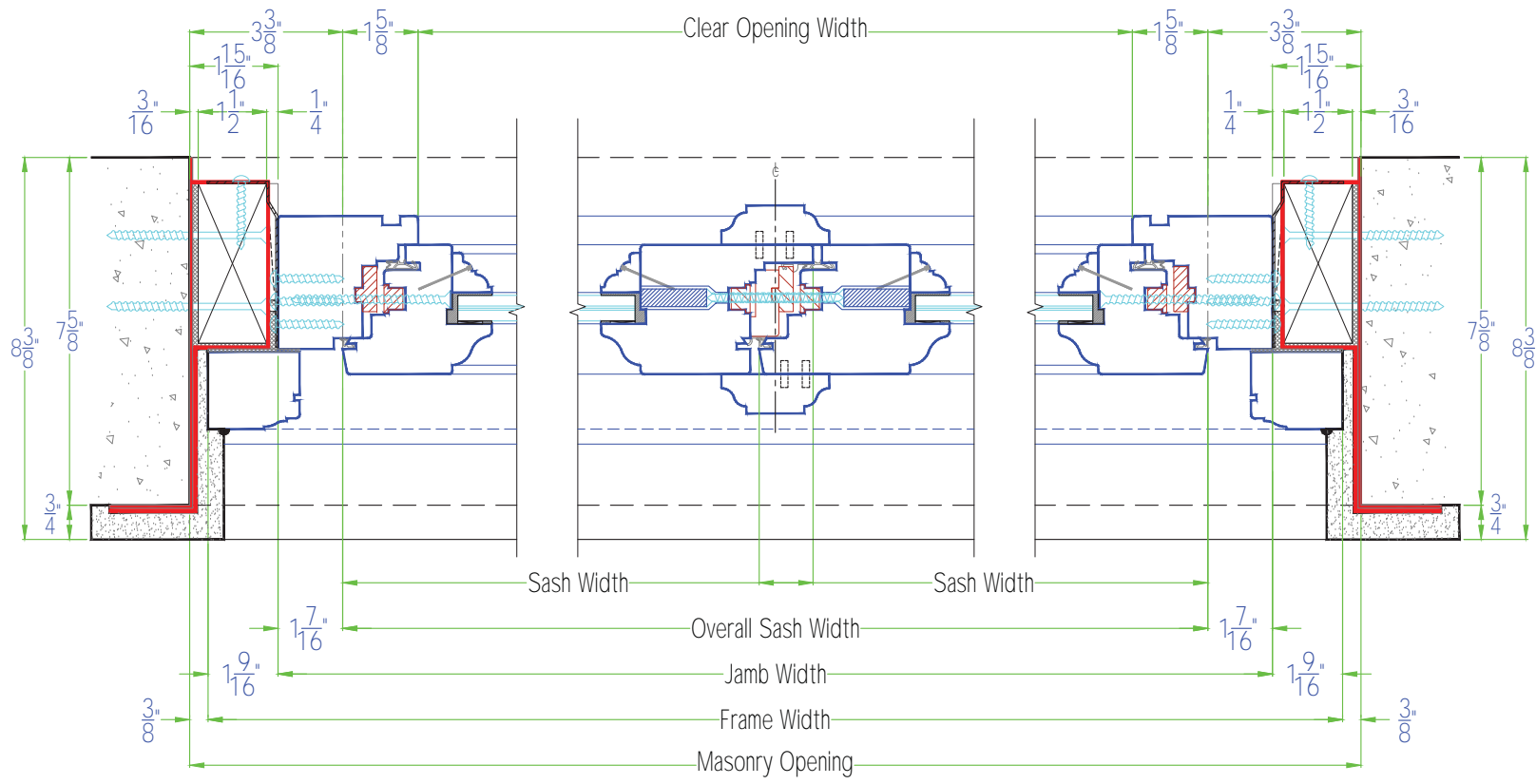
Scale: 3" = 1'-0"

LUXBAUM WINDOWS + DOORS
 T: 1.561.684.1500 F:1.561.689.1506



1501 NORTHPOINT PARKWAY , SUITE 101
 WEST PALM BEACH, FL 33407 USA





Scale: 3" = 1'-0"

LUXBAUM WINDOWS + DOORS
 T: 1.561.684.1500 F:1.561.689.1506

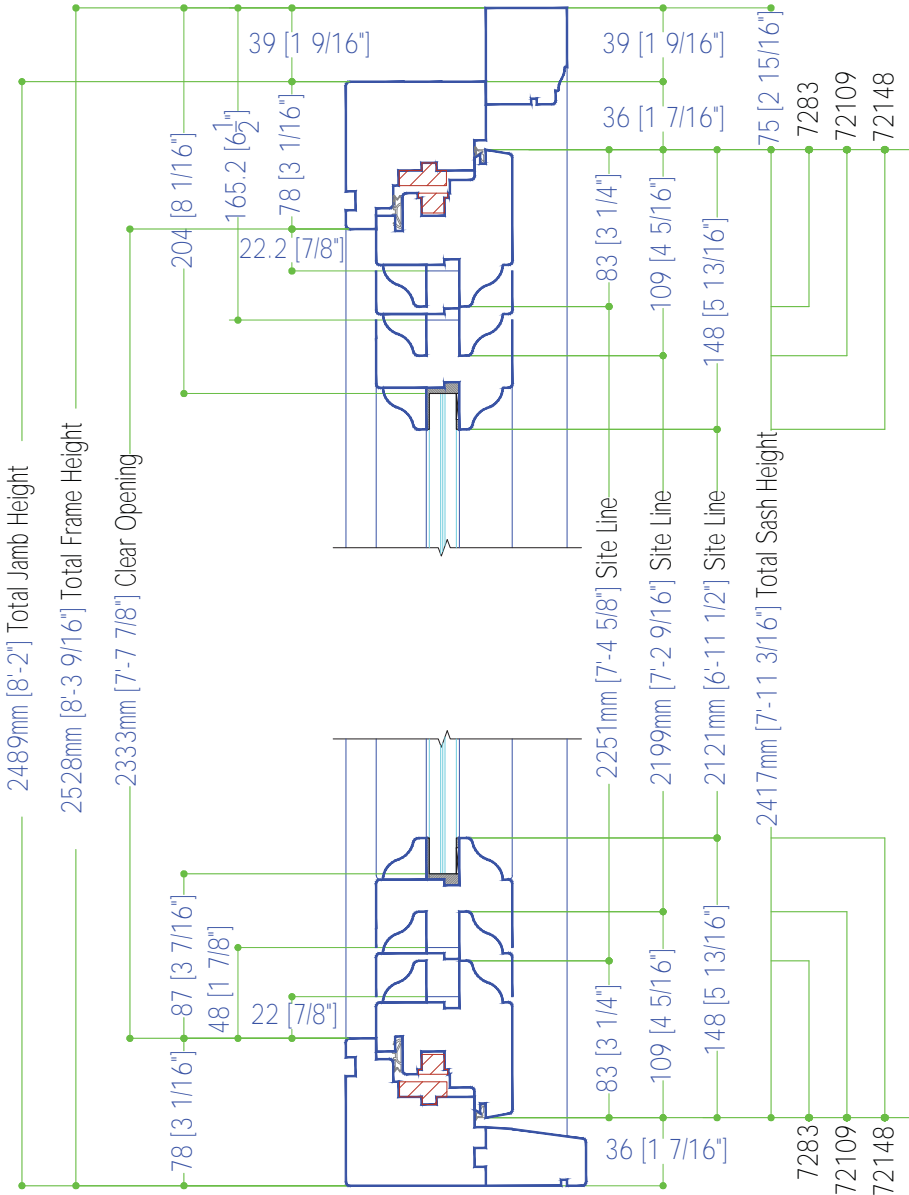


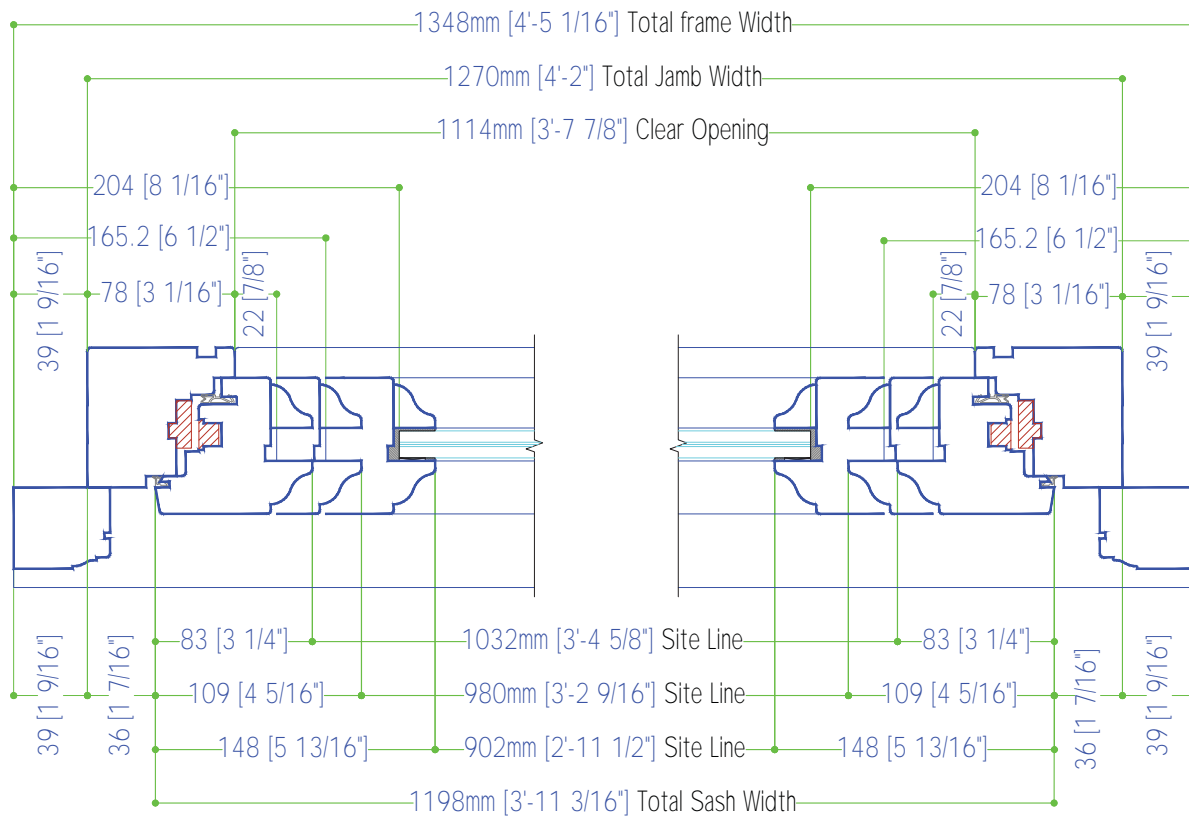
1501 NORTHPOINT PARKWAY , SUITE 101
 WEST PALM BEACH, FL 33407 USA

ARCHITECTS' CATALOG

FIXED CASEMENT WINDOW

COMPUTATION TOOL BASED ON 4'-2" x 8'-2" WINDOW

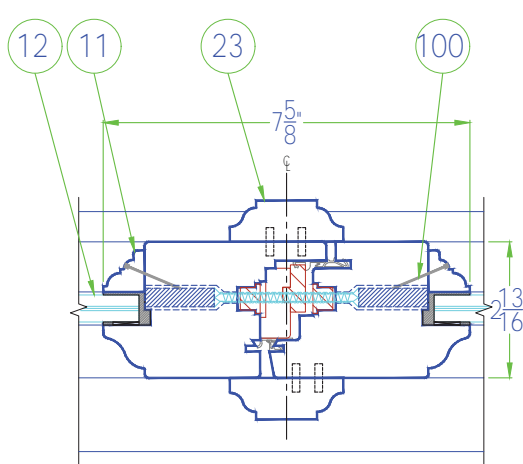
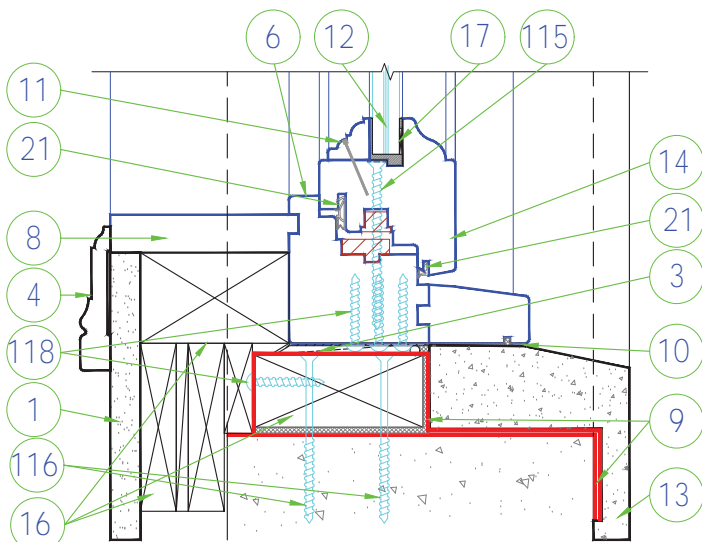
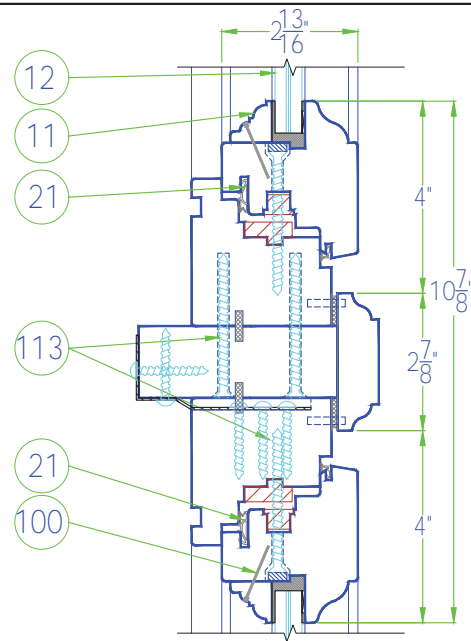
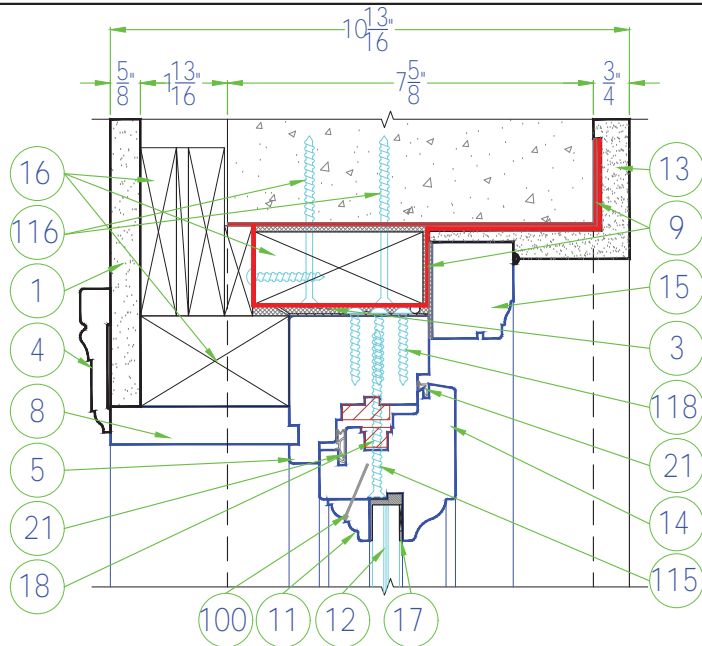




Scale: 3" = 1'-0"

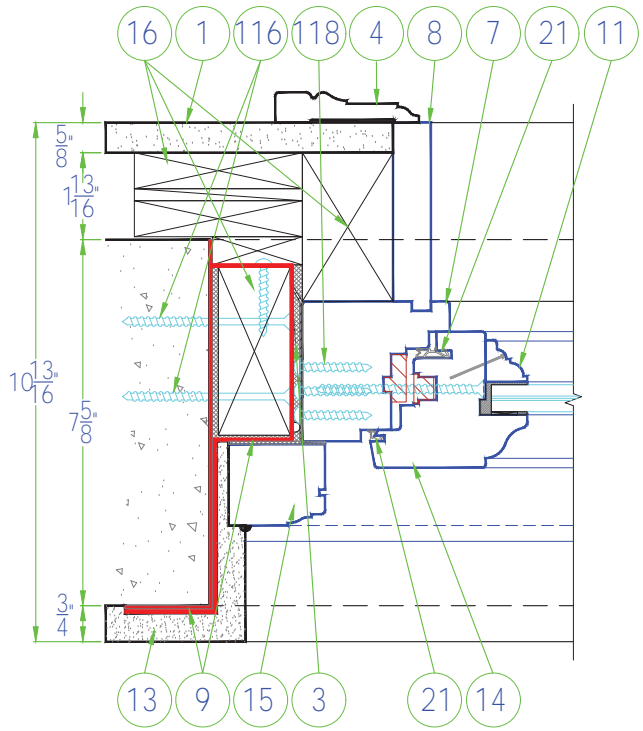
ARCHITECTS' CATALOG

FIXED CASEMENT WINDOW



①	DESCRIPTION
1	Drywall
2	Framing
3	Shim Shingles Max. 1/4"
4	Casing
5	Jamb Header
6	Jamb Sill
7	Jamb Leg
8	Jamb Extension
9	Pro-R Guard Fast Flash
10	Pro-R Guard Air Dam
11	Glasstop
12	Impact Glass / Insulated Glass
13	Stucco
14	Sash
15	Brickmold
16	Buck / Framing
17	Glazing - Dow 995
18	'FFI' - Operating Hardware
19	'Centor' - Track
20	'Centor' - Hardware
21	Gasket / Weather Seal
22	Operating Handle
23	Fillet
24	'Centor' Bug Screen System
25	Threshold
100	23 Gauge Pin Nail 1"
100a	23 Gauge Pin Nail 1-3/8"
100b	23 Gauge Pin Nail 2"
100	23 Gauge Pin Nail
108	#8 X 1 1/2" Wood Screw SS
112	#14 X 2 1/2" Wood Screw SS
112a	#14 X 4" Wood Screw SS
112b	#14 X 3 1/2" Wood Screw SS
112c	#14 X 3 1/4" Wood Screw SS
112d	#14 X 5 1/2" Wood Screw SS
112e	#14 X 1 1/2" Wood Screw SS Pan Head
116	Tapcon 1/4" x 3 1/4" SS
116a	Tapcon 1/4" x 1-3/4" SS Hex
116b	Tapcon 1/4" x 2" SS
116c	Tapcon 1/4" x 4" SS
116d	Tapcon 1/4" x 3-3/4" SS philips
118	#8 X 1 1/2" Strap Screw SS
212	Strap 1-1/2" x 1-3/4" SS
213	Monarch Z Clip

ALL REGULATIONS TO BE SELECTED AS PER THE APPLICABLE LIST APPROVALS

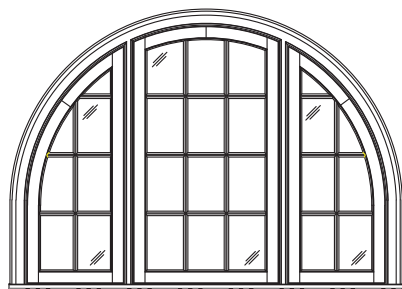


Scale: 3" = 1'-0"

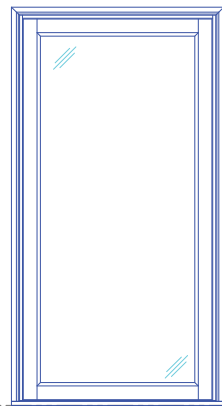
LUXBAUM WINDOWS + DOORS
 T: 1.561.684.1500 F:1.561.689.1506



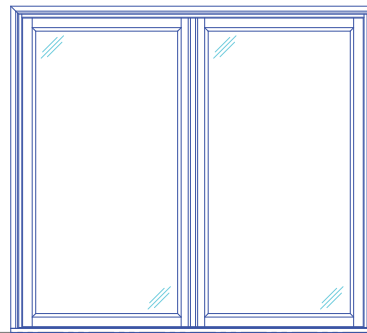
1501 NORTHPOINT PARKWAY , SUITE 101
 WEST PALM BEACH, FL 33407 USA



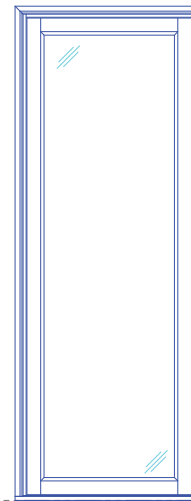
Fixed Casement Window



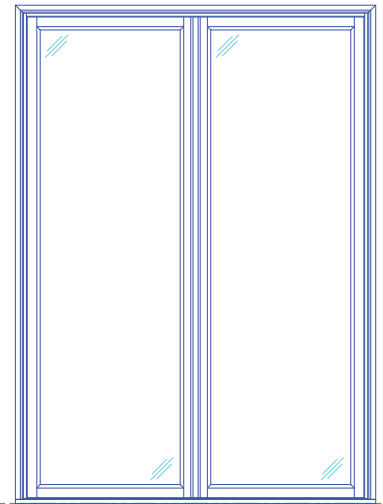
Single Fixed Casement Widest
4'-2" x 8'-2"



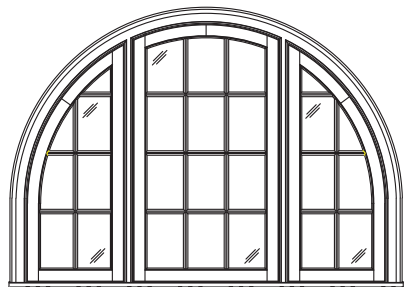
Double Fixed Casement Widest
7'-2" x 6'-8"



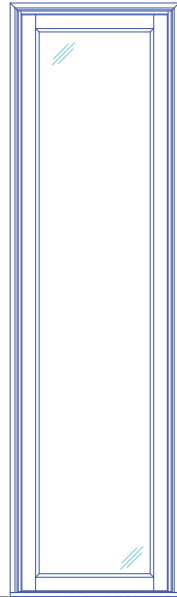
Single Fixed Casement Wide
3'-8" x 10'-2"



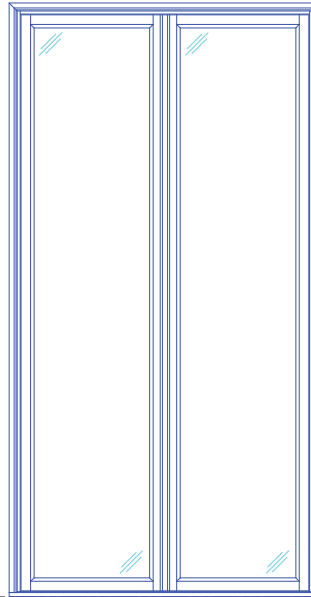
Double Fixed Casement Wide
7'-3" x 10'-3"



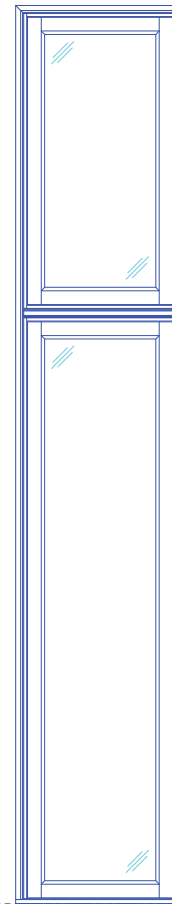
Fixed Casement Window



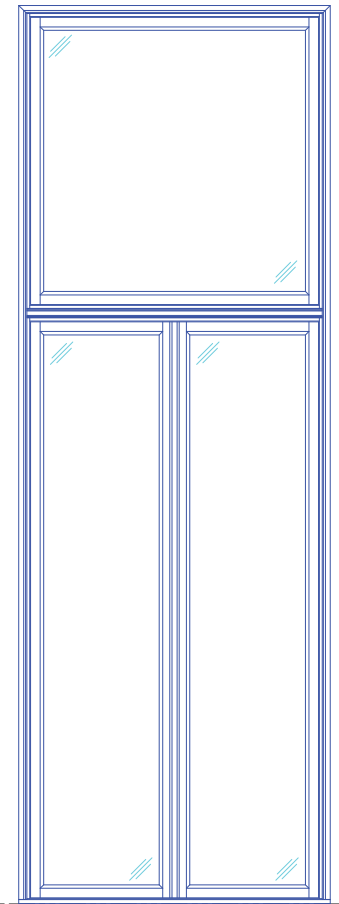
Single Fixed Casement Tallest
3'-3" x 12'-2"



Double Fixed Casement Tallest
6'-2" x 12'-2"



Single Fixed Casement with Transom
3'-3" x 18'-4"



Double Fixed Casement with Transom
6'-2" x 18'-4"

Scale: 1/4" = 1'-0"

LUXBAUM WINDOWS + DOORS
T: 1.561.684.1500 F:1.561.689.1506



1501 NORTHPOINT PARKWAY , SUITE 101
WEST PALM BEACH, FL 33407 USA