

LUXBAUM WINDOWS + DOORS
T: 1.561.684.1500 F:1.561.689.1506
1501 NORTHPOINT PARKWAY, SUITE 101
WEST PALM BEACH, FL 33407 USA



FOLDING DOOR
ARCHITECTS' CATALOG

Laszlo Wagner

CEO & Founder
laszlo.wagner@luxbaum.com

Putu Udayana

General Manager

Mogo Yusina Kadena

Assistant Manager

Ketut Rai Sami

Production Estimator

Judy Luca

Controller
judy.luca@luxbaum.com

Judy Wilber

Executive Assistant - Project Manager
judy.wilber@luxbaum.com

Andrea Mendoza

CAD Manager - Shop Drawings
andrea.mendoza@luxbaum.com

David Vander Wiele

Senior Installation Manager
dave.vanderviele@luxbaum.com

Peter Stalder

Installation Manager
peter.stalder@luxbaum.com

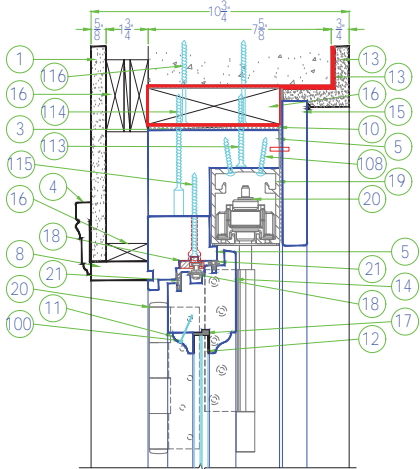
www.luxbaum.com

LUXBAUM WINDOWS + DOORS
T: 1.561.684.1500 F: 1.561.689.1506

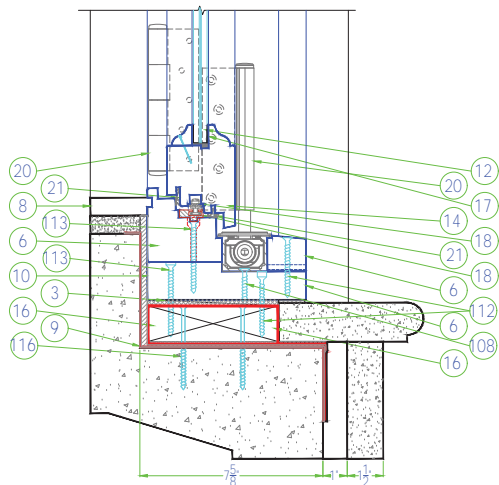
1501 NORTHPOINT PARKWAY, SUITE 101, WEST PALM BEACH, FL 33407 USA

Scale: 1-1/2" = 1'-0"

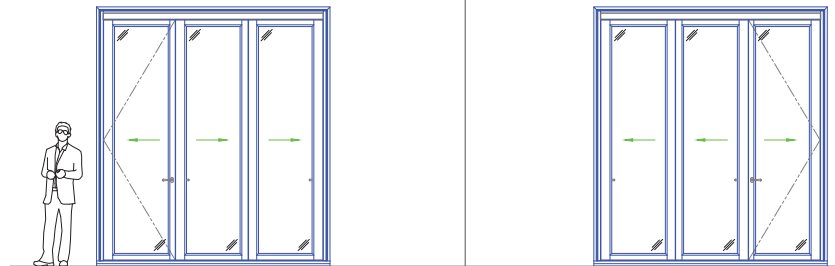
FOL-HEADER



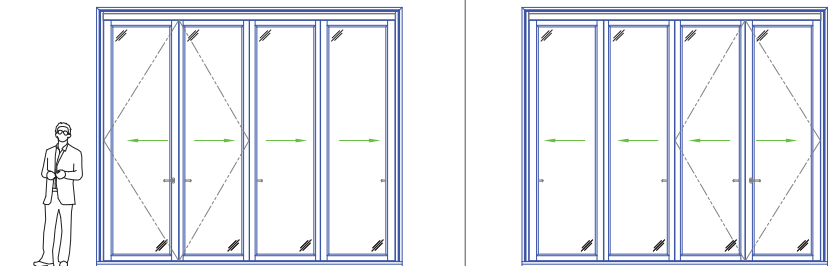
FOL-SILL



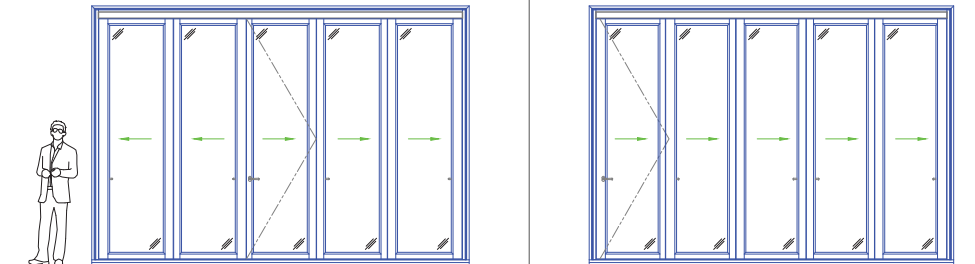
21A 21B



22A 22B



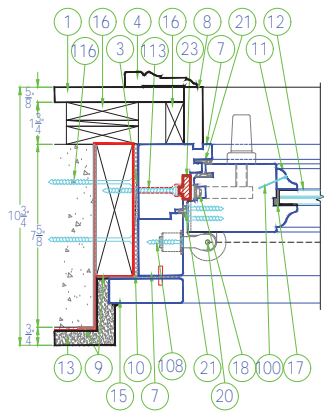
23A 23B



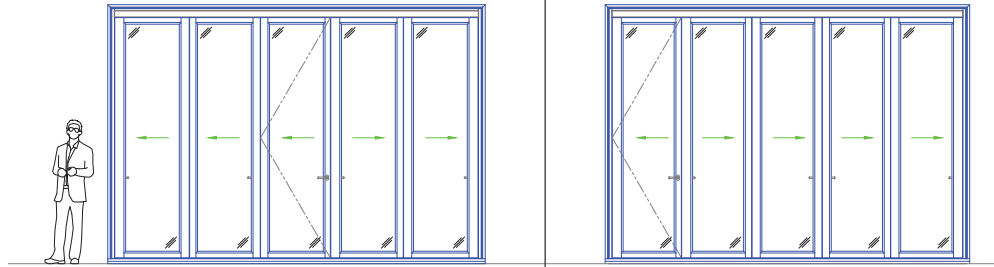
④	DESCRIPTION
1	Drywall
2	Framing
3	Shim Shingles Max. 1/4"
4	Casing
5	Jamb Header
6	Jamb Sill
7	Jamb Leg
8	Jamb Extension
9	Pro-R Guard Fast Flash
10	Pro-R Guard Air Dam
11	Glasstop
12	Impact Glass / Insulated Glass
13	Stucco
14	Sash
15	Brickmold
16	Buck / Framing
17	Glazing - Dow 995
18	FF' - Operating Hardware
19	Centor - Track
20	Centor - Hardware
21	Gasket / Weather Seal
22	Operating Handle
23	Fillet
24	Centor Bug Screen System
25	Threshold
100	23 Gauge Pin Nail 1"
100a	23 Gauge Pin Nail 1-3/8"
100b	23 Gauge Pin Nail 2"
100	23 Gauge Pin Nail
108	#8 X 1 1/2" Wood Screw SS
112	#14 X 2 1/2" Wood Screw SS
112a	#14 X 4" Wood Screw SS
112b	#14 X 3 1/2" Wood Screw SS
112c	#14 X 3 1/4" Wood Screw SS
112d	#14 X 5 1/2" Wood Screw SS
112e	#14 X 1 1/2" Wood Screw SS Pan Head
116	Tapcon 1/4" x 3 1/4" SS
116a	Tapcon 1/4" x 1-3/4" SS Hex
116b	Tapcon 1/4" x 2" SS
116c	Tapcon 1/4" x 4" SS
116d	Tapcon 1/4" x 3-3/4" SS philips
118	#8 X 1 1/2" Strap Screw SS
212	Strap 1-1/2" x 1-3/4" SS
213	Monarch Z Clip

ALL DIMENSIONS TO BE CHECKED AS PER THE APPLICABLE SET OF APPROVALS.

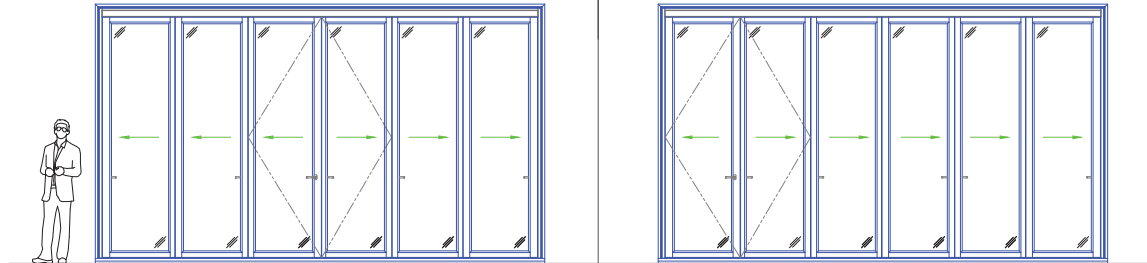
FOL-HINGE



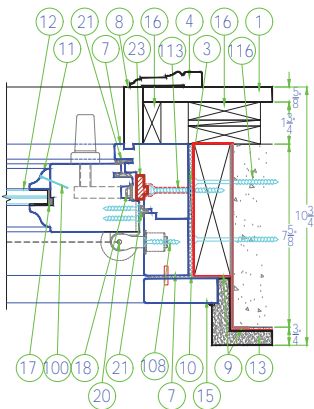
24A 24B



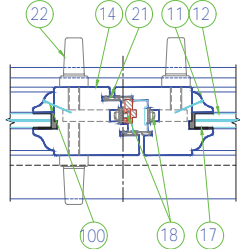
25A 25B



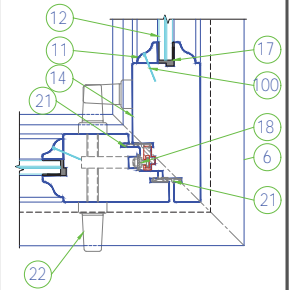
FOL-HINGE



FOL-MEETING STYLE



FOL-CORNER MEETING STYLE

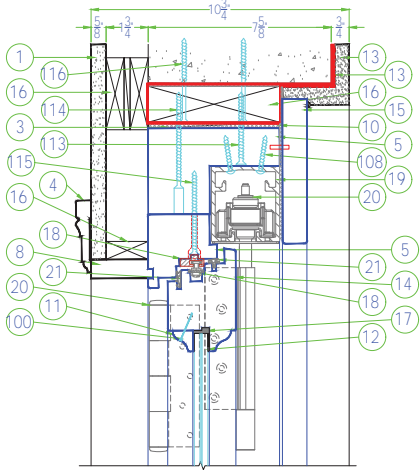


ARCHITECTS' CATALOG

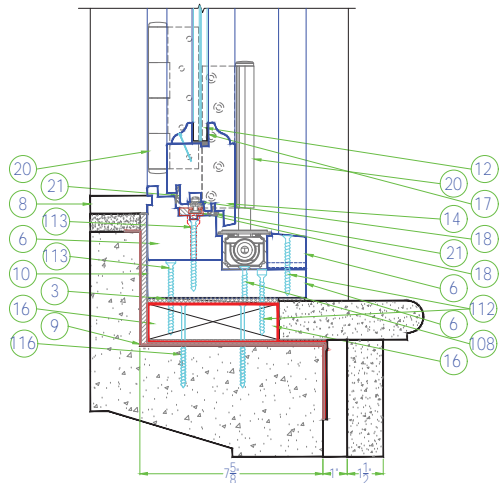
FOLDING DOORS

Scale: 1-1/2" = 1'-0"

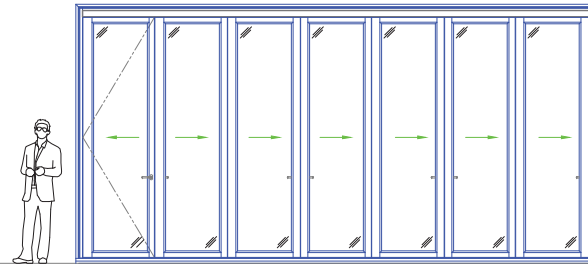
FOL-HEADER



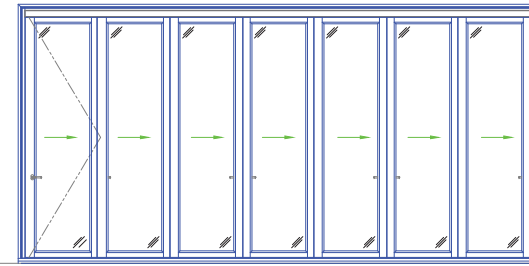
FOL-SILL



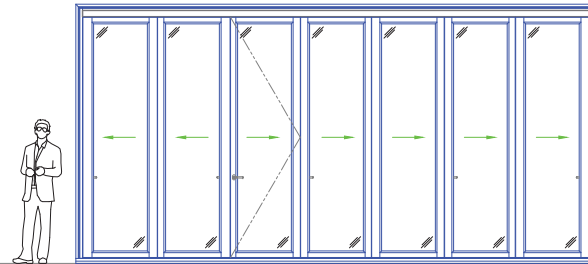
26A



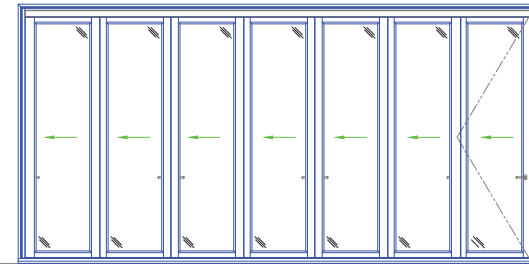
26B



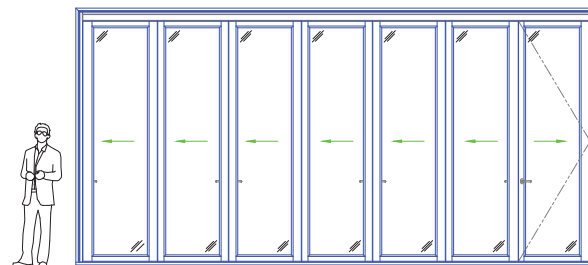
27A



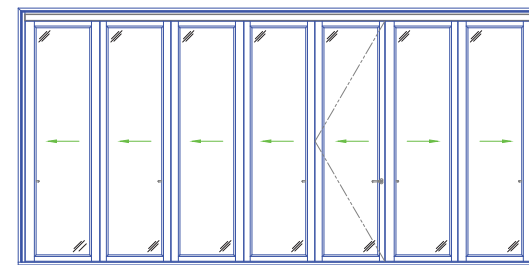
27B



28A



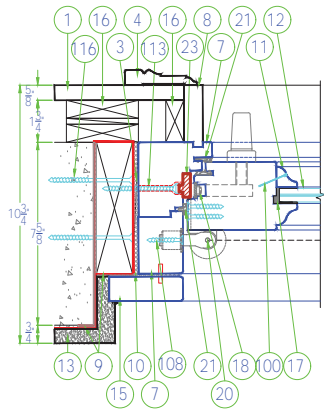
28B



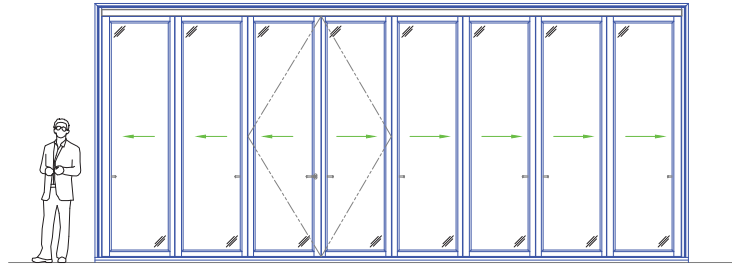
①	DESCRIPTION
1	Drywall
2	Framing
3	Shim Shingles Max. 1/4"
4	Casing
5	Jamb Header
6	Jamb Sill
7	Jamb Leg
8	Jamb Extension
9	Pro-R Guard Fast Flash
10	Pro-R Guard Air Dam
11	Glasstop
12	Impact Glass / Insulated Glass
13	Stucco
14	Sash
15	Brickmold
16	Buck / Framing
17	Glazing - Dow 995
18	FF' - Operating Hardware
19	'Centor' - Track
20	'Centor' - Hardware
21	Gasket / Weather Seal
22	Operating Handle
23	Fillet
24	'Centor' Bug Screen System
25	Threshold
100	23 Gauge Pin Nail 1"
100a	23 Gauge Pin Nail 1-3/8"
100b	23 Gauge Pin Nail 2"
100	23 Gauge Pin Nail
108	#8 X 1 1/2" Wood Screw SS
112	#14 X 2 1/2" Wood Screw SS
112a	#14 X 4" Wood Screw SS
112b	#14 X 3 1/2" Wood Screw SS
112c	#14 X 3 1/4" Wood Screw SS
112d	#14 X 5 1/2" Wood Screw SS
112e	#14 X 1 1/2" Wood Screw SS Pan Head
116	Tapcon 1/4" x 3 1/4" SS
116a	Tapcon 1/4" x 1-3/4" SS Hex
116b	Tapcon 1/4" x 2" SS
116c	Tapcon 1/4" x 4" SS
116d	Tapcon 1/4" x 3-3/4" SS Phillips
118	#8 X 1 1/2" Strap Screw SS
212	Strap 1-1/2" x 1-3/4" SS
213	Monarch Z Clip

ALL DIMENSIONS TO BE CHECKED AS PER THE APPLICABLE SET OF APPROVALS.

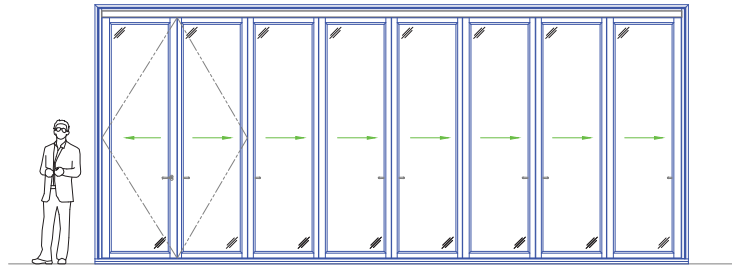
FOL-HINGE



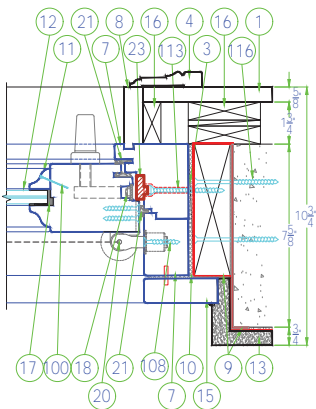
29A



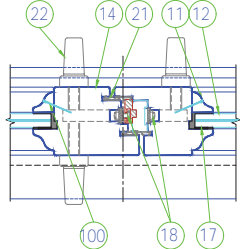
29B



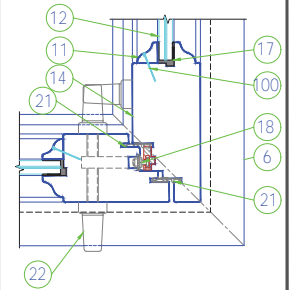
FOL-HINGE



FOL-MEETING STYLE



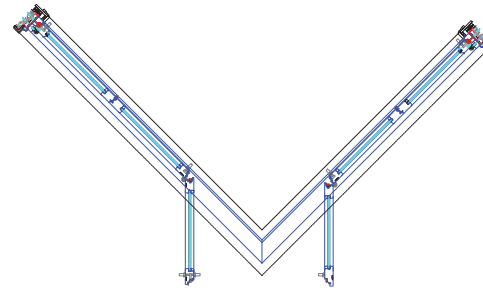
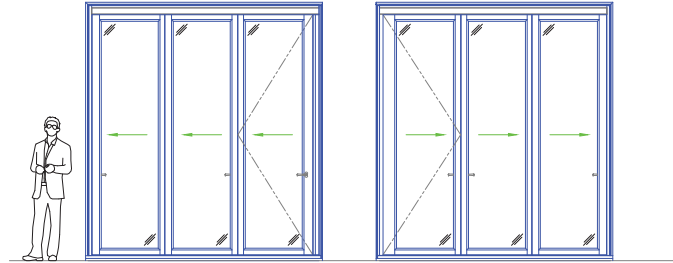
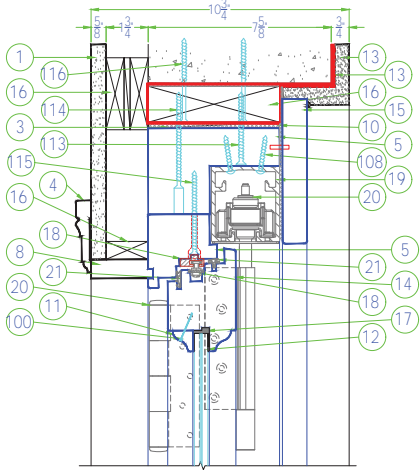
FOL-CORNER MEETING STYLE



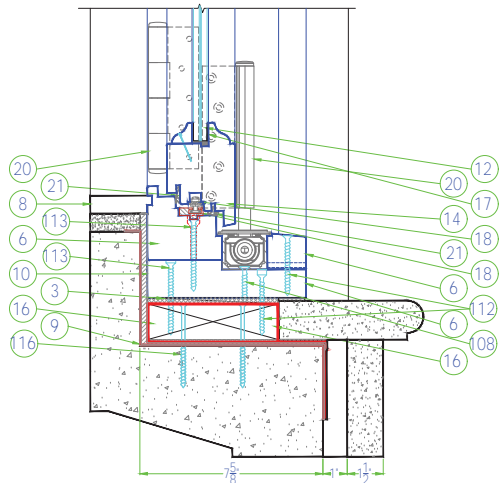
Scale: 1-1/2" = 1'-0"

30A

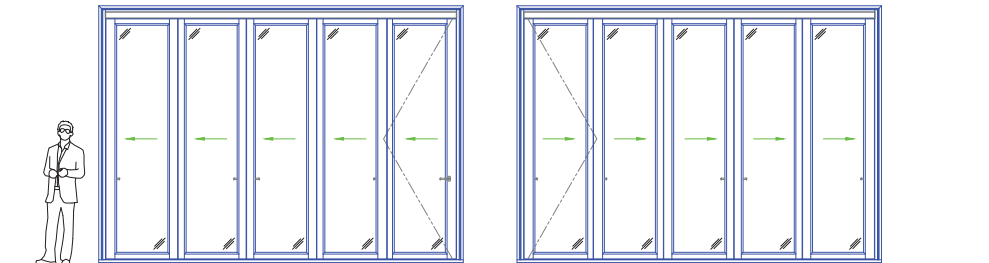
FOL-HEADER



FOL-SILL



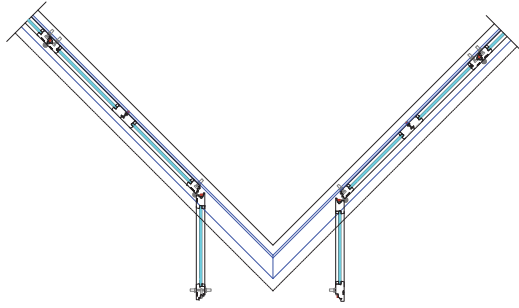
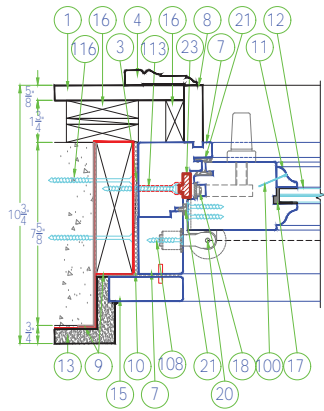
31A



①	DESCRIPTION
1	Drywall
2	Framing
3	Shim Shingles Max. 1/4"
4	Casing
5	Jamb Header
6	Jamb Sill
7	Jamb Leg
8	Jamb Extension
9	Pro-R Guard Fast Flash
10	Pro-R Guard Air Dam
11	Glasstop
12	Impact Glass / Insulated Glass
13	Stucco
14	Sash
15	Brickmold
16	Buck / Framing
17	Glazing - Dow 995
18	FF' - Operating Hardware
19	Centor - Track
20	Centor - Hardware
21	Gasket / Weather Seal
22	Operating Handle
23	Fillet
24	Centor Bug Screen System
25	Threshold
100	23 Gauge Pin Nail 1"
100a	23 Gauge Pin Nail 1-3/8"
100b	23 Gauge Pin Nail 2"
100	23 Gauge Pin Nail
108	#8 X 1 1/2" Wood Screw SS
112	#14 X 2 1/2" Wood Screw SS
112a	#14 X 4" Wood Screw SS
112b	#14 X 3 1/2" Wood Screw SS
112c	#14 X 3 1/4" Wood Screw SS
112D	#14 X 5 1/2" Wood Screw SS
112e	#14 X 1 1/2" Wood Screw SS Pan Head
116	Tapcon 1/4" x 3 1/4" SS
116a	Tapcon 1/4" x 1-3/4" SS Hex
116b	Tapcon 1/4" x 2" SS
116c	Tapcon 1/4" x 4" SS
116d	Tapcon 1/4" x 3-3/4" SS philips
118	#8 X 1 1/2" Strap Screw SS
212	Strap 1-1/2" x 1-3/4" SS
213	Monarch Z Clip

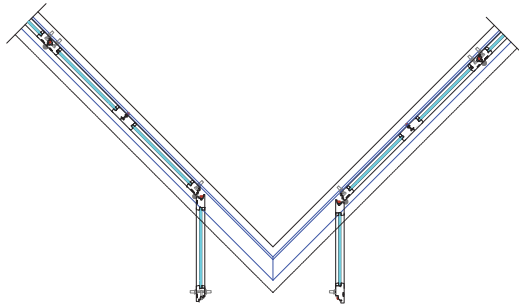
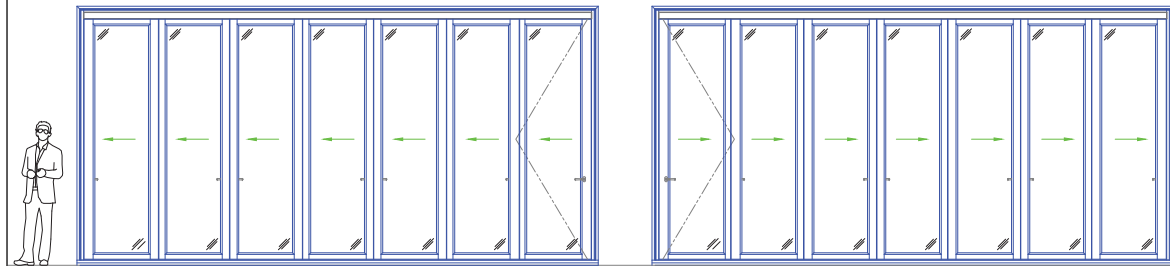
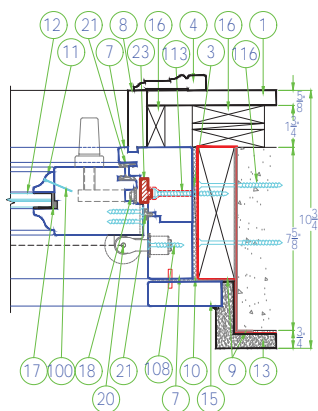
ALL DIMENSIONS TO BE CHECKED AS PER THE APPLICABLE SET OF APPROVALS.

FOL-HINGE

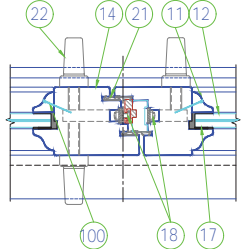


32A

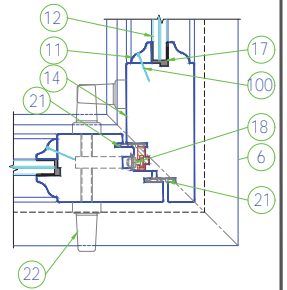
FOL-HINGE



FOL-MEETING STYLE



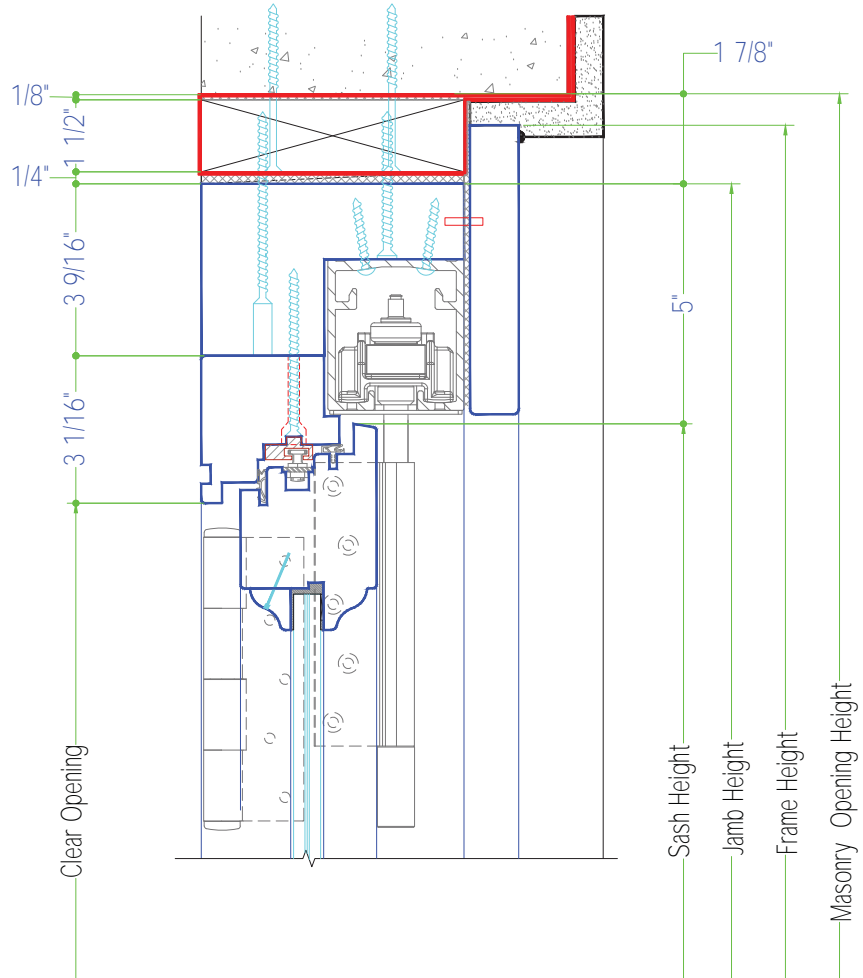
FOL-CORNER MEETING STYLE

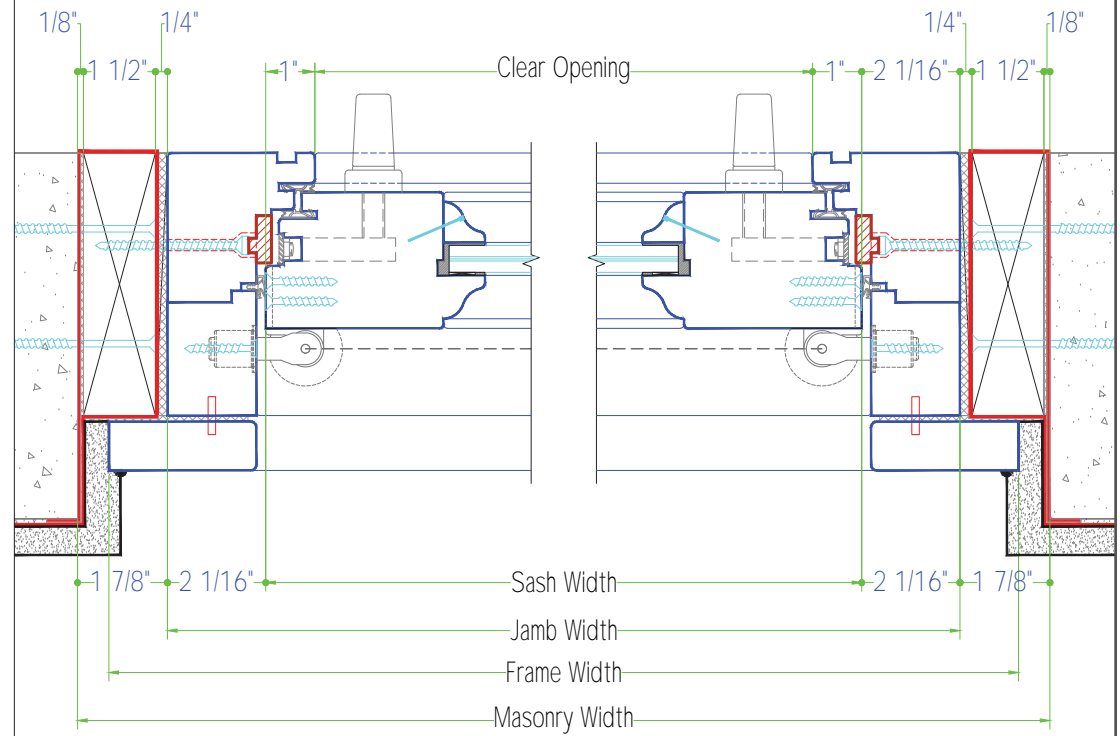
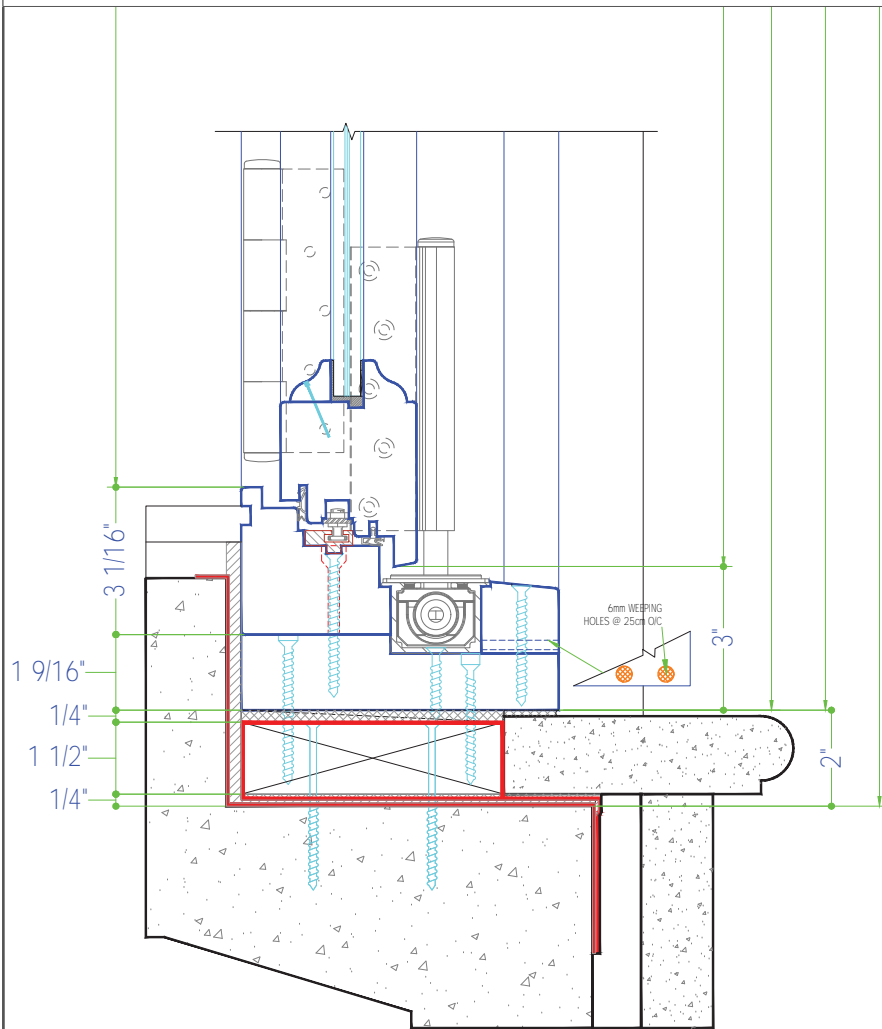


LUXBAUM WINDOWS + DOORS
T: 1.561.684.1500 F:1.561.689.1506



1501 NORTHPOINT PARKWAY , SUITE 101
WEST PALM BEACH, FL 33407 USA



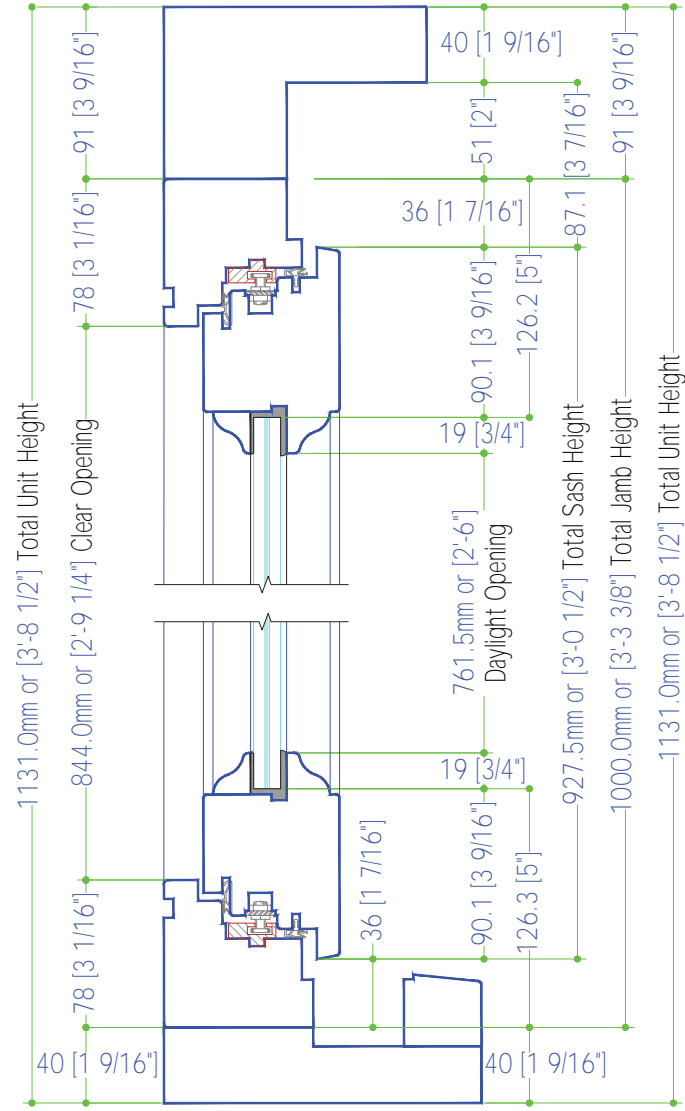


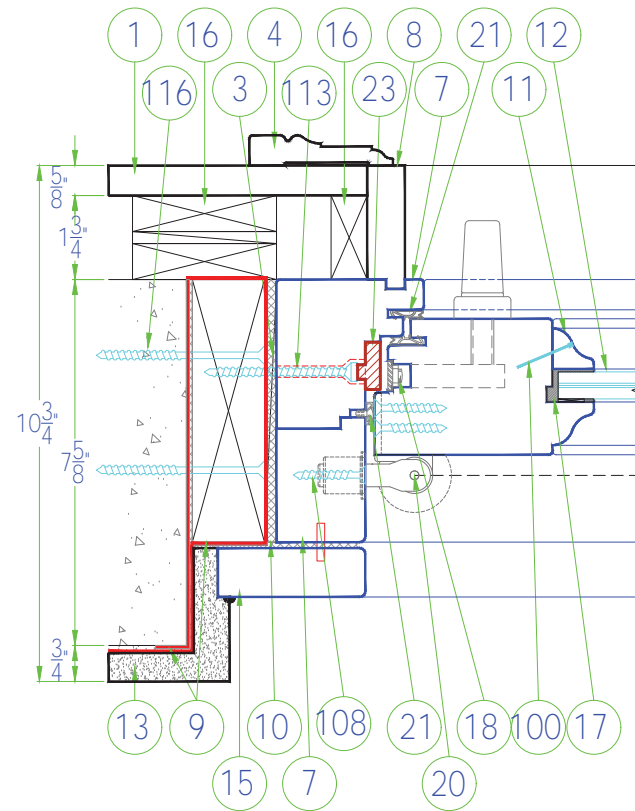
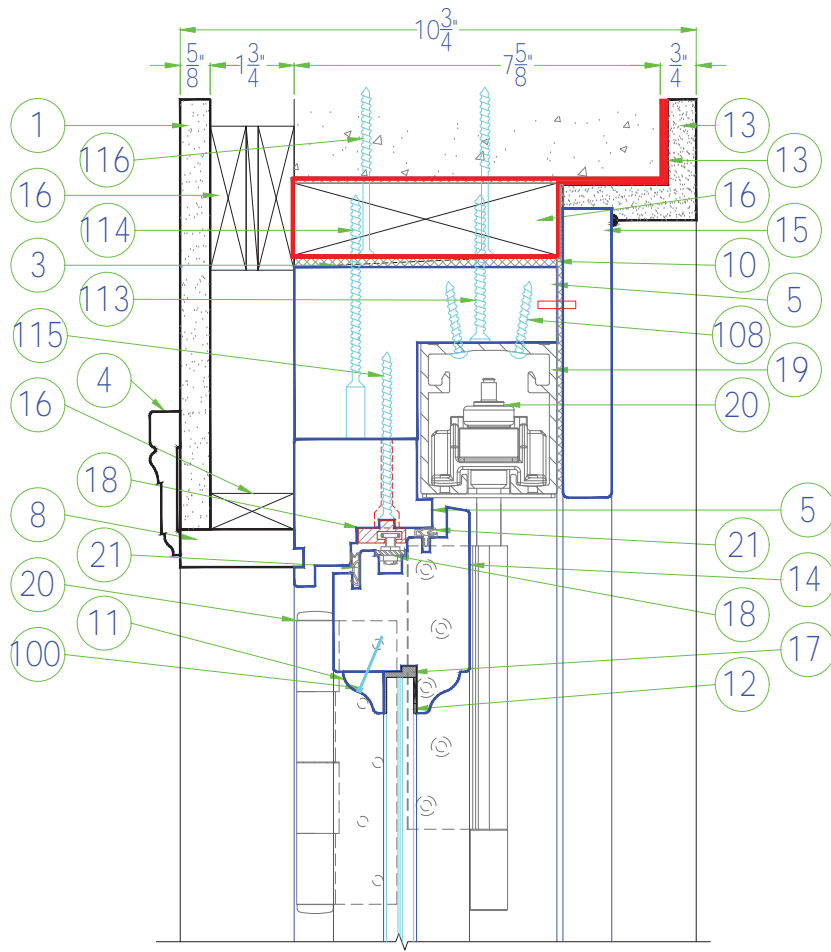
Scale: 3" = 1'-0"

LUXBAUM WINDOWS + DOORS
 T: 1.561.684.1500 F: 1.561.689.1506



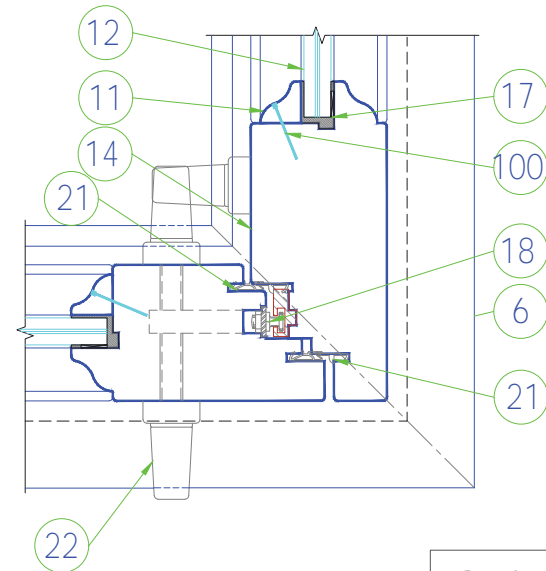
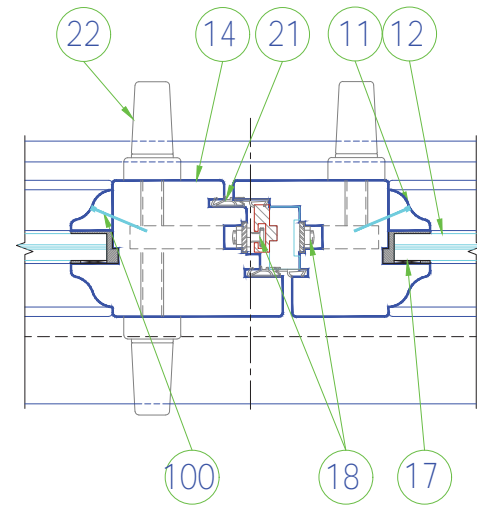
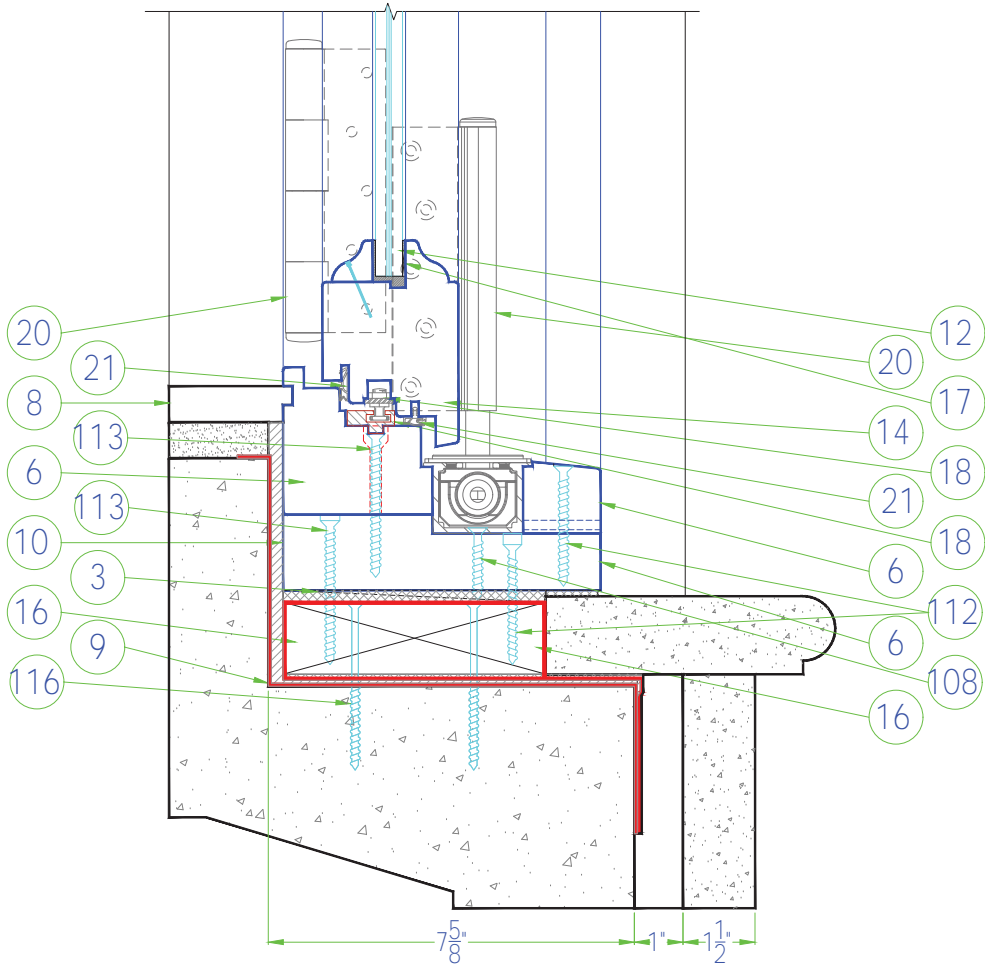
1501 NORTHPOINT PARKWAY, SUITE 101
 WEST PALM BEACH, FL 33407 USA





Ⓢ	DESCRIPTION
1	Drywall
2	Framing
3	Shim Shingles Max. 1/4"
4	Casing
5	Jamb Header
6	Jamb Sill
7	Jamb Leg
8	Jamb Extension
9	Pro-R Guard Fast Flash
10	Pro-R Guard Air Dam
11	Glasstop
12	Impact Glass / Insulated Glass
13	Stucco
14	Sash
15	Brickmold
16	Buck / Framing
17	Glazing - Dow 995
18	'FFI' - Operating Hardware
19	'Centor' - Track
20	'Centor' - Hardware
21	Gasket / Weather Seal
22	Operating Handle
23	Fillet
24	'Centor' Bug Screen System
25	Threshold
100	23 Gauge Pin Nail 1"
100a	23 Gauge Pin Nail 1-3/8"
100b	23 Gauge Pin Nail 2"
100c	23 Gauge Pin Nail
108	#8 X 1 1/2" Wood Screw SS
112	#14 X 2 1/2" Wood Screw SS
112a	#14 X 4" Wood Screw SS
112b	#14 X 3 1/2" Wood Screw SS
112c	#14 X 3 1/4" Wood Screw SS
112d	#14 X 5 1/2" Wood Screw SS
112e	#14 X 1 1/2" Wood Screw SS Pan Head
116	Tapcon 1/4" x 3 1/4" SS
116a	Tapcon 1/4" x 1-3/4" SS Hex
116b	Tapcon 1/4" x 2" SS
116c	Tapcon 1/4" x 4" SS
116d	Tapcon 1/4" x 3-3/4" SS philips
118	#8 X 1 1/2" Strap Screw SS
212	Strap 1-1/2" x 1-3/4" SS
213	Monarch Z Clip

ALL DIMENSIONS TO BE CHECKED AS PER THE APPLICABLE PLAN APPROVALS



Scale: 3" = 1'-0"

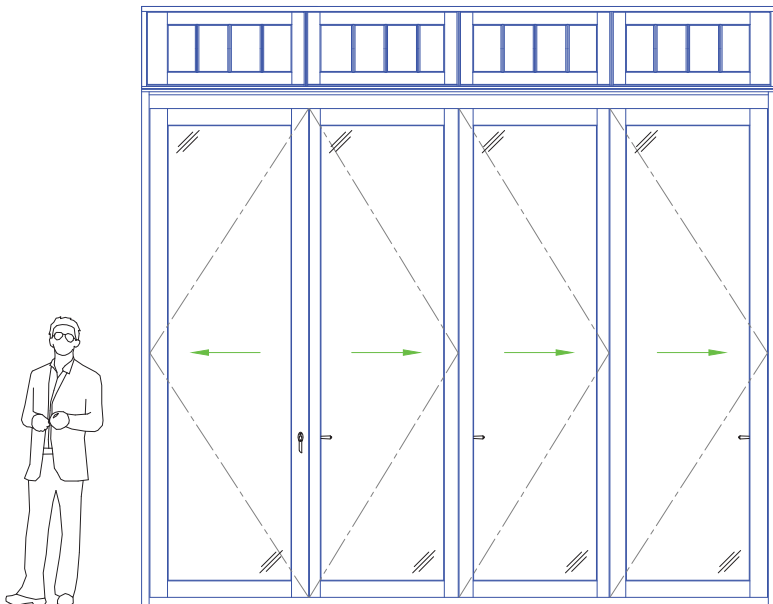
LUXBAUM WINDOWS + DOORS
 T: 1.561.684.1500 F:1.561.689.1506



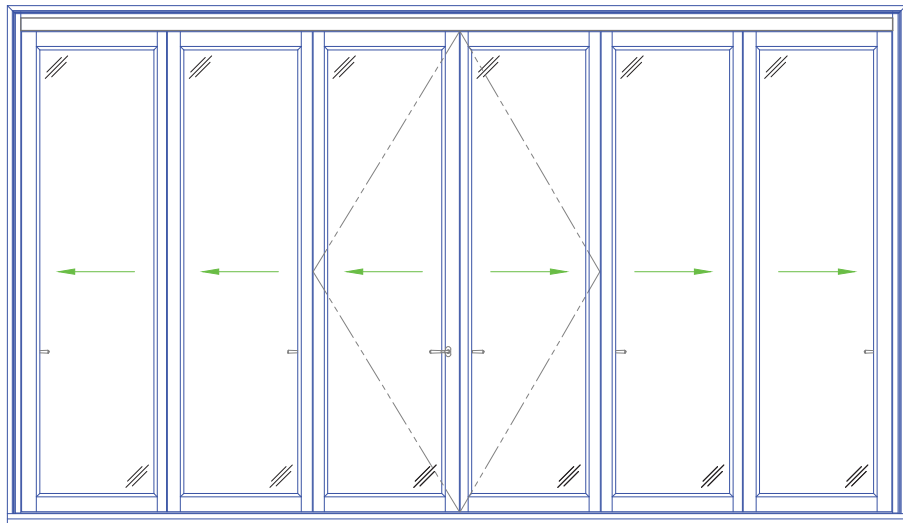
1501 NORTHPOINT PARKWAY , SUITE 101
 WEST PALM BEACH, FL 33407 USA

ARCHITECTS' CATALOG

MAXIMUM DIMENSIONS



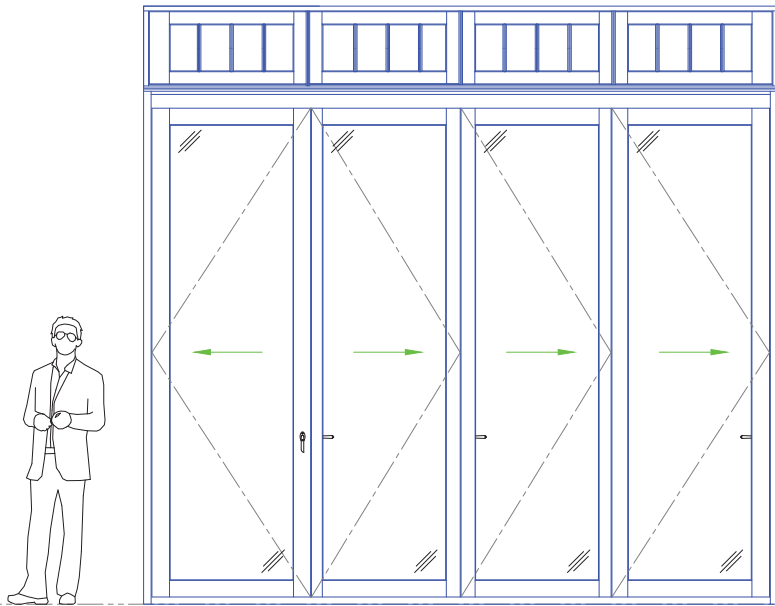
Folding Doors



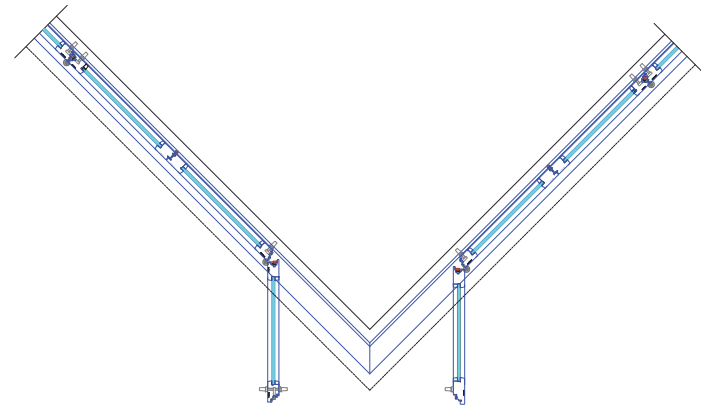
Outside of Miami-Dade
Unlimited Number of Panels
x 10'-2"

Six-Panel Folding Door
18'-5" x 10'-2"

Miami-Dade Maximum
Nine Panels x 10'-2"



Folding Doors



Outside of Miami-Dade
Unlimited Number of Panels
x 10'-2"

Folding Doors
Disappearing Corner

Miami-Dade Maximum
Nine + Nine Panels
x 10'-2"

Scale: 1/4" = 1'-0"

LUXBAUM WINDOWS + DOORS
T: 1.561.684.1500 F:1.561.689.1506



1501 NORTHPOINT PARKWAY , SUITE 101
WEST PALM BEACH, FL 33407 USA