

LUXBAUM WINDOWS + DOORS
T: 1.561.684.1500 F:1.561.689.1506
1501 NORTHPOINT PARKWAY, SUITE 101
WEST PALM BEACH, FL 33407 USA



DOUBLE HUNG WINDOW
ARCHITECTS' CATALOG

Laszlo Wagner

CEO & Founder
laszlo.wagner@luxbaum.com

Putu Udayana

General Manager

Mogo Yusina Kadena

Assistant Manager

Ketut Rai Sami

Production Estimator

Judy Luca

Controller
judy.luca@luxbaum.com

Judy Wilber

Executive Assistant - Project Manager
judy.wilber@luxbaum.com

Andrea Mendoza

CAD Manager - Shop Drawings
andrea.mendoza@luxbaum.com

David Vander Wiele

Senior Installation Manager
dave.vanderviele@luxbaum.com

Peter Stalder

Installation Manager
peter.stalder@luxbaum.com

www.luxbaum.com

LUXBAUM WINDOWS + DOORS
T: 1.561.684.1500 F: 1.561.689.1506

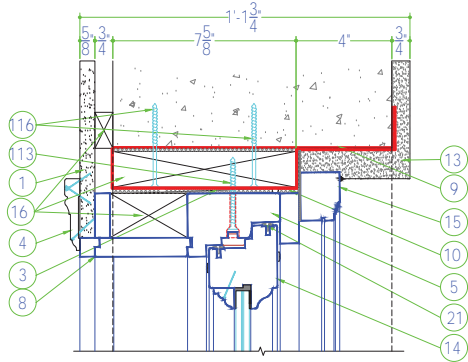
1501 NORTHPOINT PARKWAY, SUITE 101, WEST PALM BEACH, FL 33407 USA

ARCHITECTS' CATALOG

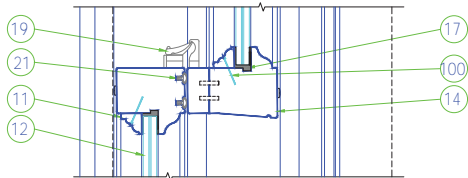
DOUBLE HUNG WINDOW

Scale: 1-1/2" = 1'-0"

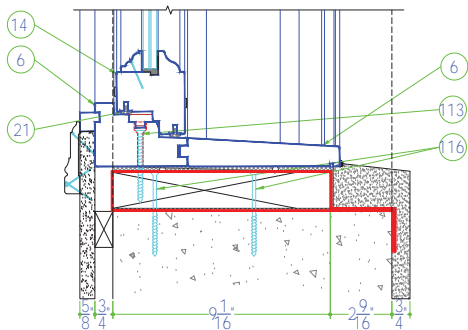
DHW-HEADER



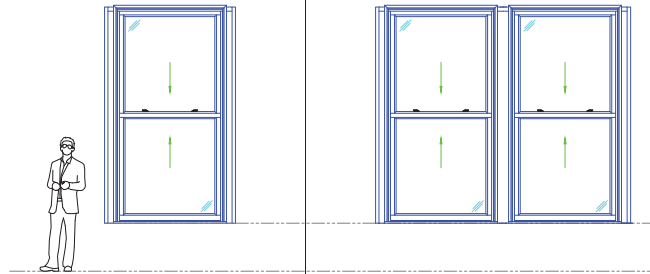
DHW-MEETING STYLE



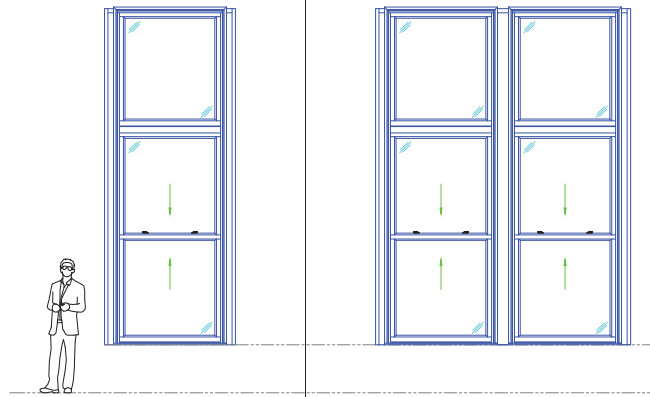
DHW-SILL



13A 13B

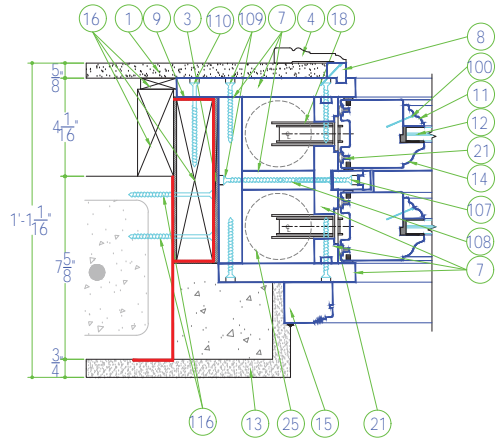


14A 14B

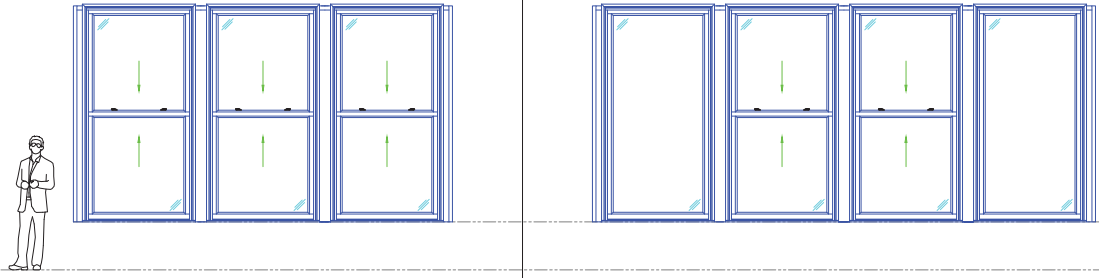


⊕	DESCRIPTION
1	Drywall
2	Framing
3	Shim Shingles Max. 1/4"
4	Casing
5	Jamb Header
6	Jamb Sill
7	Jamb Leg
8	Jamb Extension
9	Pro-R Guard Fast Flash
10	Pro-R Guard Air Dam
11	Glasstop
12	Impact Glass / Insulated Glass
13	Stucco
14	Sash
15	Brickmold
16	Buck / Framing
17	Glazing - Dow 995
18	FFI' - Operating Hardware
19	Centor' - Track
20	Centor' - Hardware
21	Gasket / Weather Seal
22	Operating Handle
23	Fillet
24	Centor' Bug Screen System
25	Threshold
100	23 Gauge Pin Nail 1"
100a	23 Gauge Pin Nail 1-3/8"
100b	23 Gauge Pin Nail 2"
100	23 Gauge Pin Nail
108	#8 X 1 1/2" Wood Screw SS
112	#14 X 2 1/2" Wood Screw SS
112a	#14 X 4" Wood Screw SS
112b	#14 X 3 1/2" Wood Screw SS
112c	#14 X 3 1/4" Wood Screw SS
112d	#14 X 5 1/2" Wood Screw SS
112e	#14 X 1 1/2" Wood Screw SS Pan Head
116	Tapcon 1/4" x 3 1/4" SS
116a	Tapcon 1/4" x 1-3/4" SS Hex
116b	Tapcon 1/4" x 2" SS
116c	Tapcon 1/4" x 4" SS
116d	Tapcon 1/4" x 3-3/4" SS phillips
118	#8 X 1 1/2" Strap Screw SS
212	Strap 1-1/2" x 1-3/4" SS
213	Monarch Z Clip

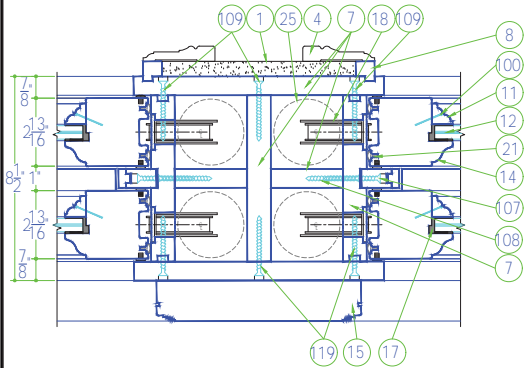
DHW-JAMB LEG



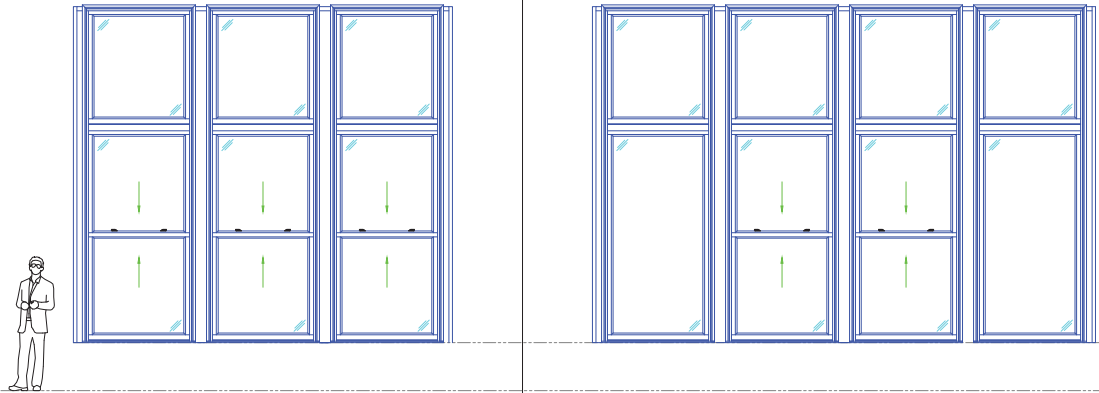
13C 13D



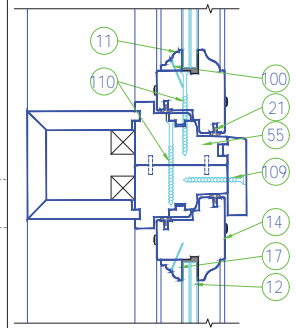
DHW-GANGED



14C 14D



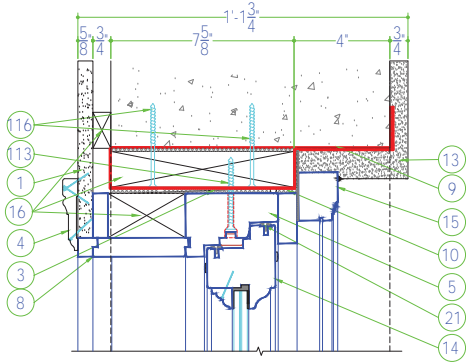
DHW-TRANSOM



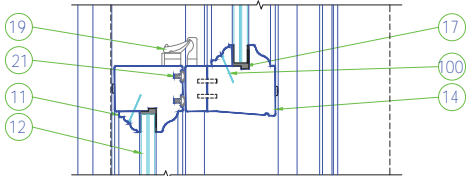
Scale: 1-1/2" = 1'-0"

15A

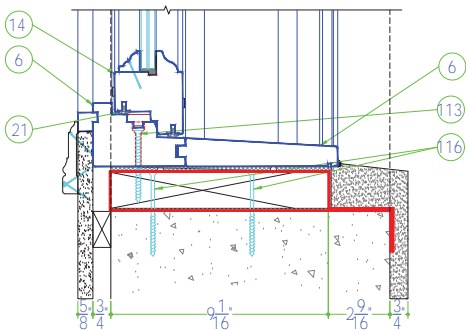
DHW-HEADER



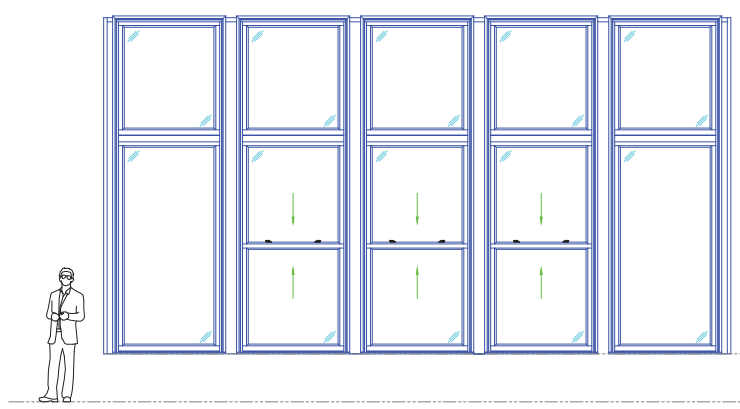
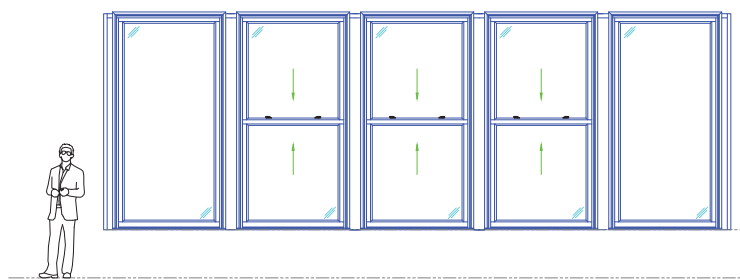
DHW-MEETING STYLE



DHW-SILL



16A

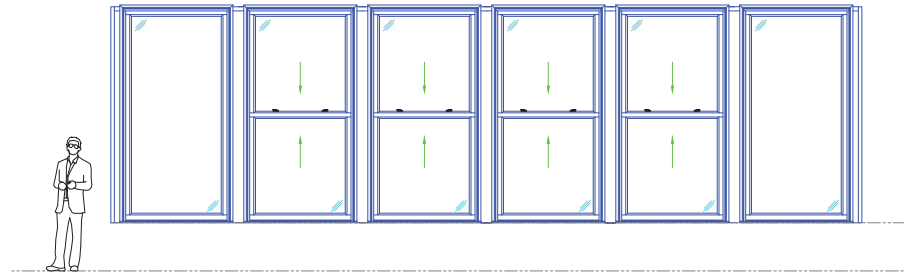
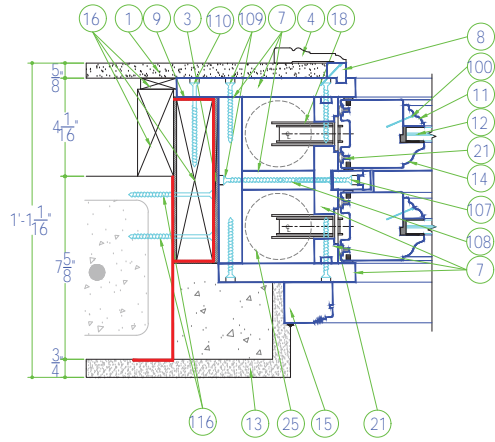


#	DESCRIPTION
1	Drywall
2	Framing
3	Shim Shingles Max. 1/4"
4	Casing
5	Jamb Header
6	Jamb Sill
7	Jamb Leg
8	Jamb Extension
9	Pro-R Guard Fast Flash
10	Pro-R Guard Air Dam
11	Glasstop
12	Impact Glass / Insulated Glass
13	Stucco
14	Sash
15	Brickmold
16	Buck / Framing
17	Glazing - Dow 995
18	FFI' - Operating Hardware
19	Centor' - Track
20	Centor' - Hardware
21	Gasket / Weather Seal
22	Operating Handle
23	Fillet
24	Centor' Bug Screen System
25	Threshold
100	23 Gauge Pin Nail 1"
100a	23 Gauge Pin Nail 1-3/8"
100b	23 Gauge Pin Nail 2"
100	23 Gauge Pin Nail
108	#8 X 1 1/2" Wood Screw SS
112	#14 X 2 1/2" Wood Screw SS
112a	#14 X 4" Wood Screw SS
112b	#14 X 3 1/2" Wood Screw SS
112c	#14 X 3 1/4" Wood Screw SS
112d	#14 X 5 1/2" Wood Screw SS
112e	#14 X 1 1/2" Wood Screw SS Pan Head
116	Tapcon 1/4" x 3 1/4" SS
116a	Tapcon 1/4" x 1-3/4" SS Hex
116b	Tapcon 1/4" x 2" SS
116c	Tapcon 1/4" x 4" SS
116d	Tapcon 1/4" x 3-3/4" SS philips
118	#8 X 1 1/2" Strap Screw SS
212	Strap 1-1/2" x 1-3/4" SS
213	Monarch Z Clip

ALL INSTALLATIONS TO BE EXECUTED PER THE APPLICABLE LIST APPROVALS

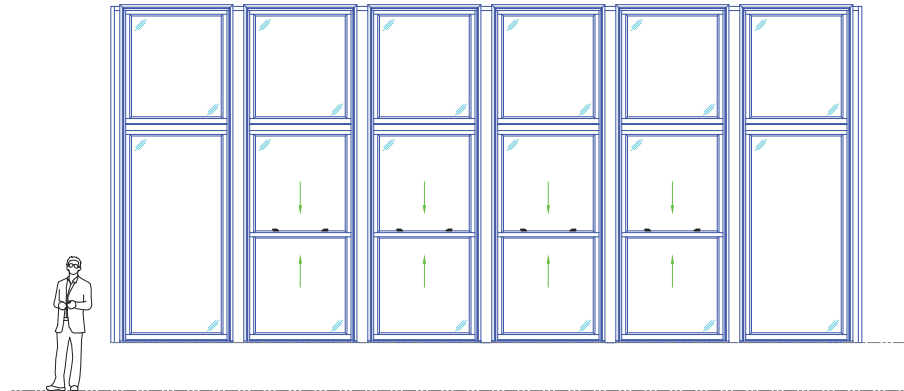
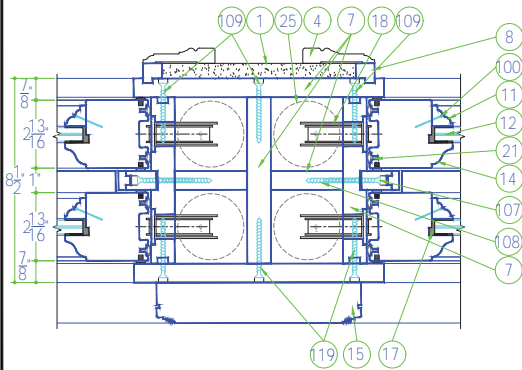
DHW-JAMB LEG

15B

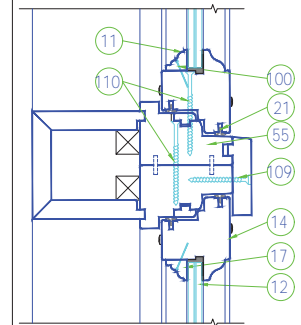


DHW-GANGED

16B

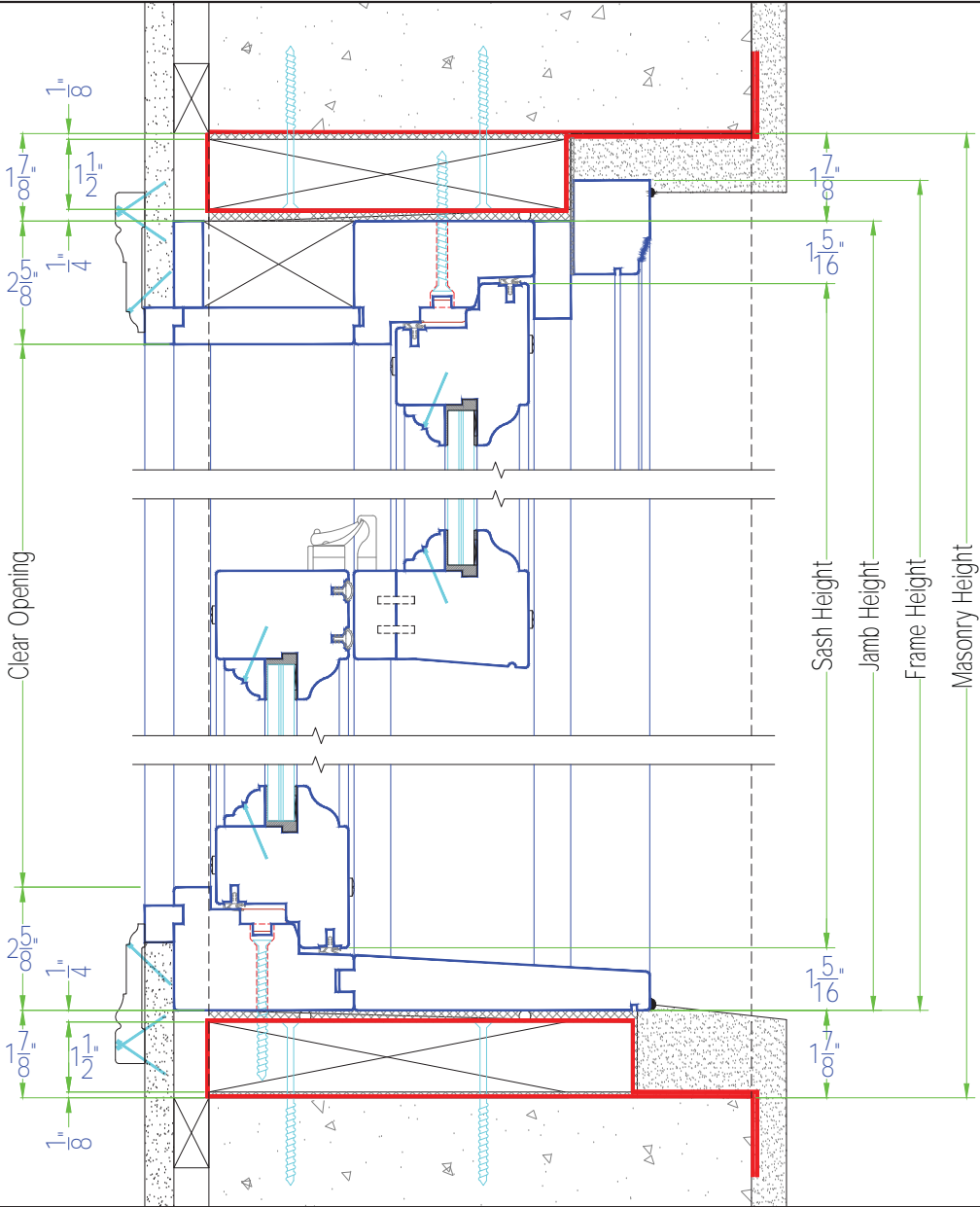


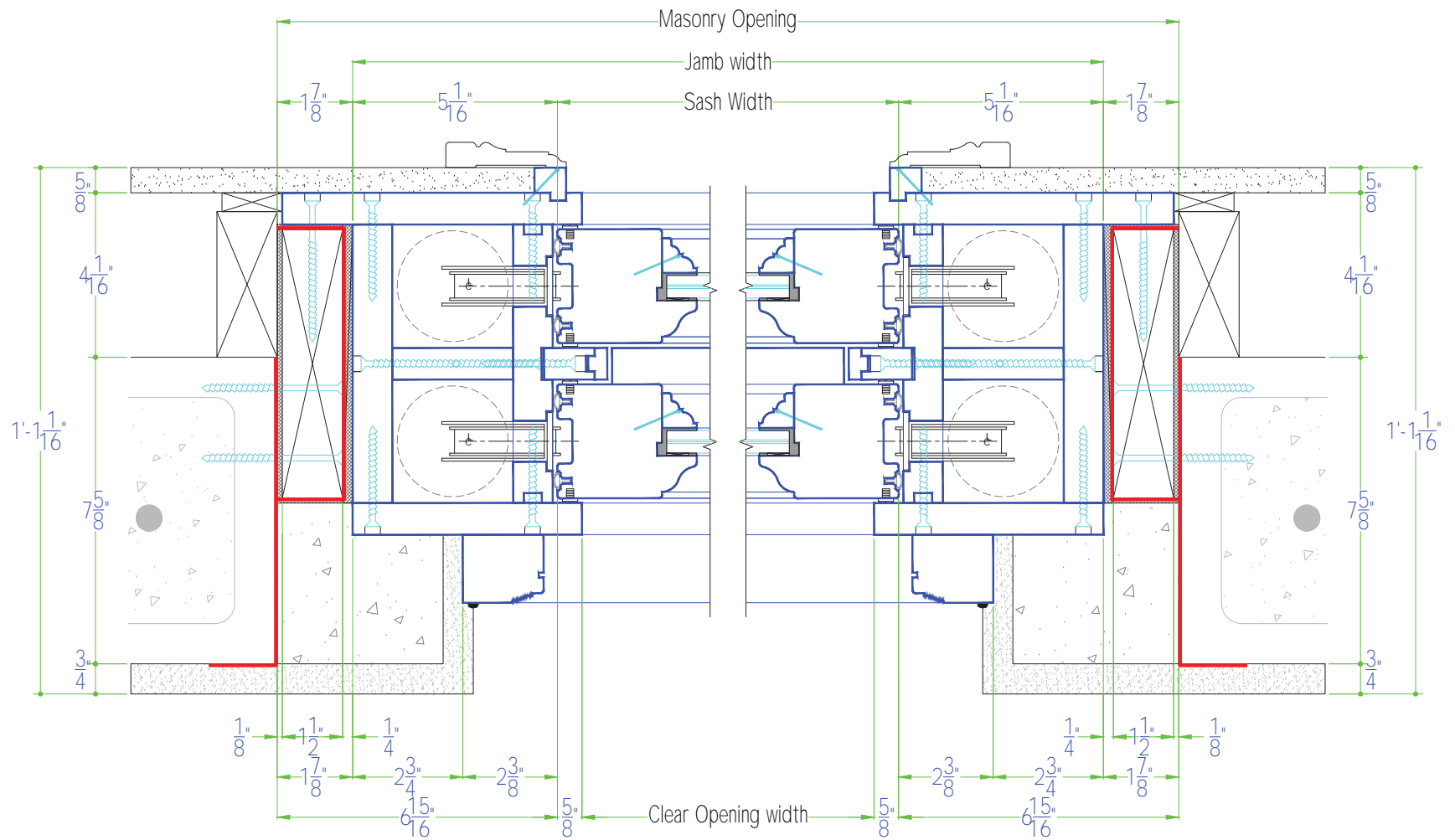
DHW-TRANSOM



ARCHITECTS' CATALOG

DOUBLE HUNG WINDOW





Scale: 3" = 1'-0"

LUXBAUM WINDOWS + DOORS
 T: 1.561.684.1500 F:1.561.689.1506

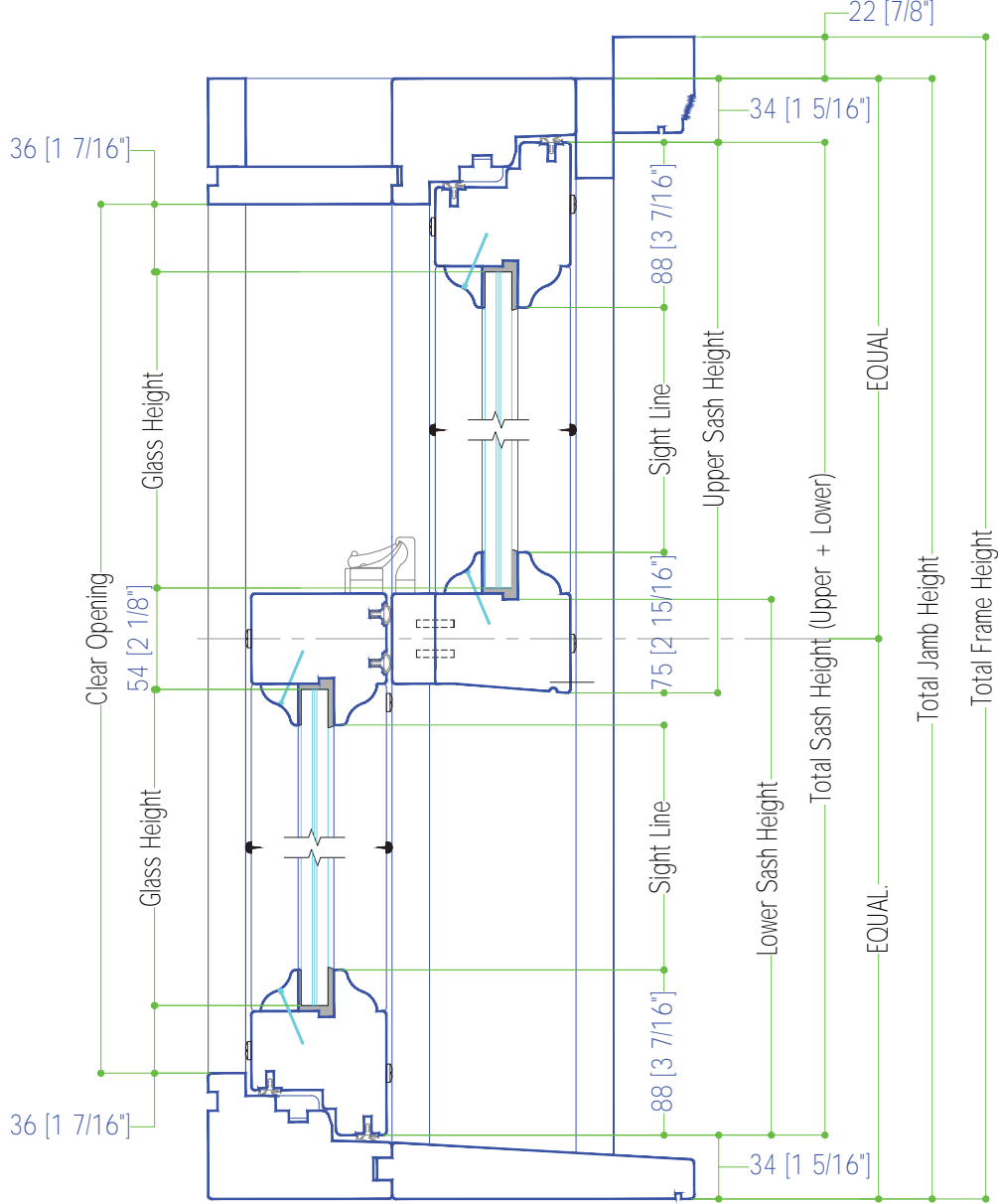


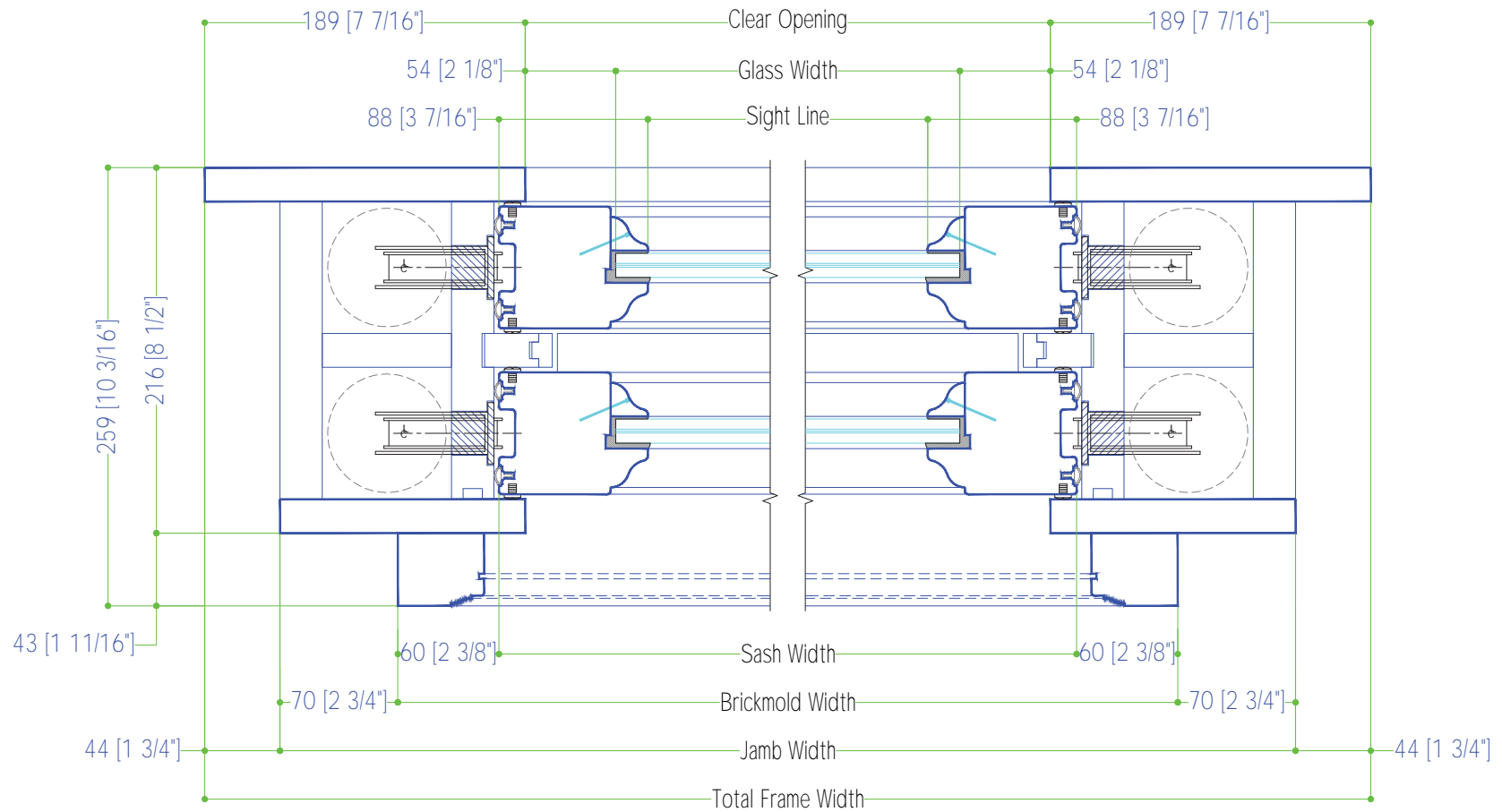
LUXBAUM
 WINDOWS + DOORS

1501 NORTHPOINT PARKWAY , SUITE 101
 WEST PALM BEACH, FL 33407 USA

ARCHITECTS' CATALOG

DOUBLE HUNG WINDOW





Scale: 3" = 1'-0"

LUXBAUM WINDOWS + DOORS
 T: 1.561.684.1500 F: 1.561.689.1506

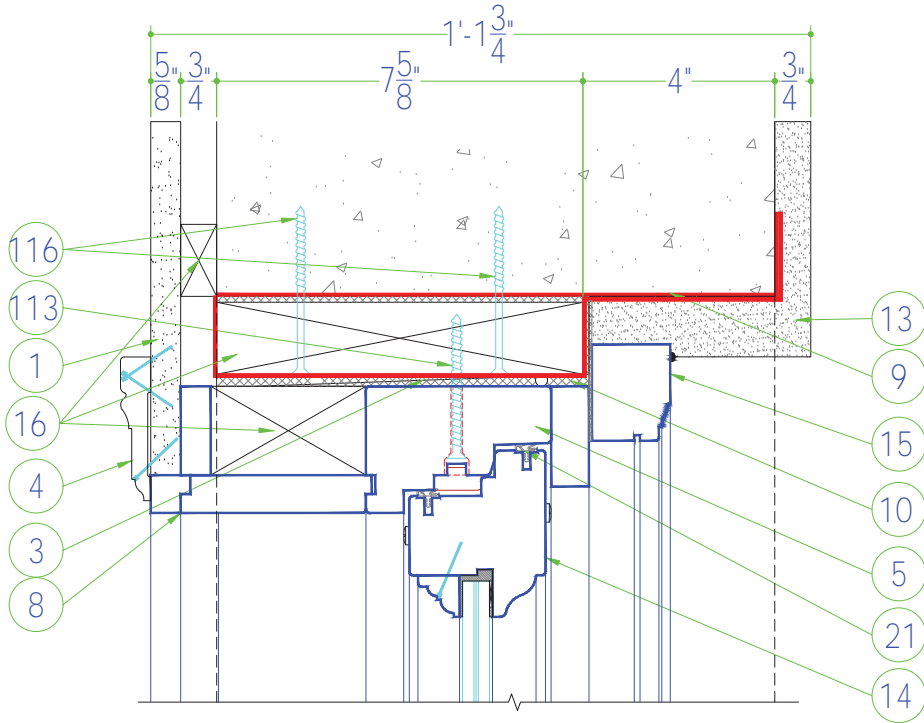


LUXBAUM
 WINDOWS + DOORS

1501 NORTHPOINT PARKWAY , SUITE 101
 WEST PALM BEACH, FL 33407 USA

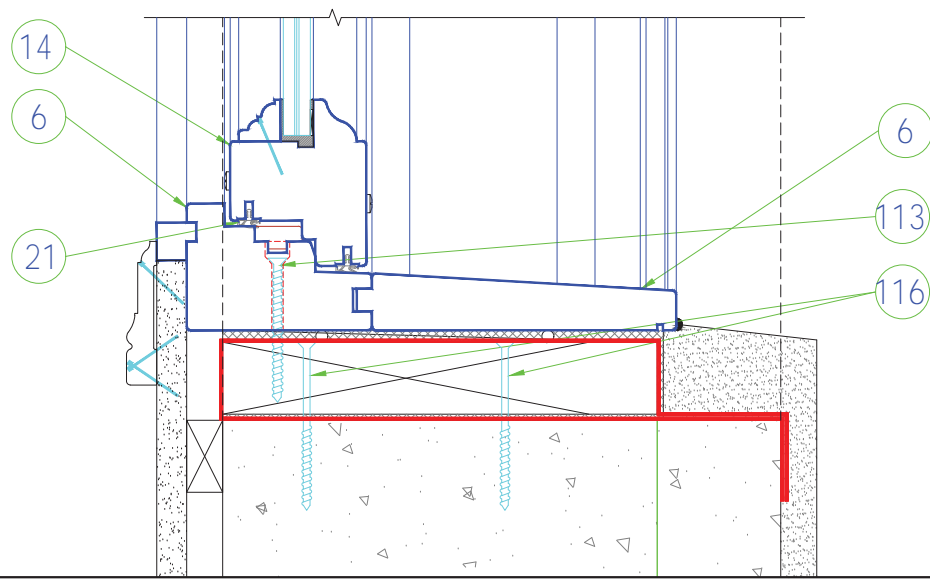
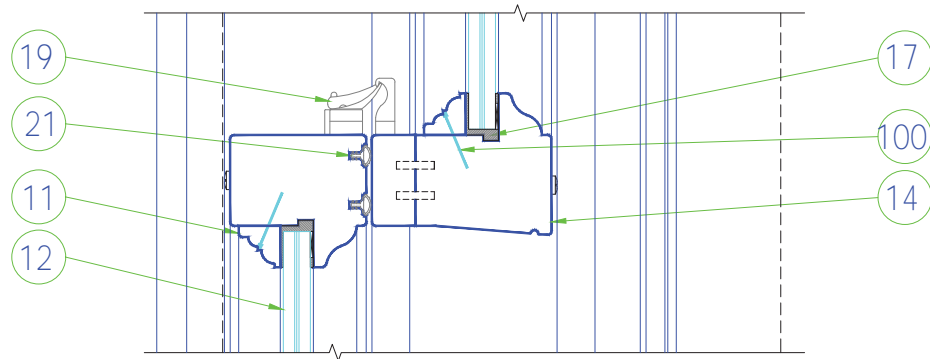
ARCHITECTS' CATALOG

DOUBLE HUNG WINDOW



Ⓢ	DESCRIPTION
1	Drywall
2	Framing
3	Shim Shingles Max. 1/4"
4	Casing
5	Jamb Header
6	Jamb Sill
7	Jamb Leg
8	Jamb Extension
9	Pro-R Guard Fast Flash
10	Pro-R Guard Air Dam
11	Glasstop
12	Impact Glass / Insulated Glass
13	Stucco
14	Sash
15	Brickmold
16	Buck / Framing
17	Glazing - Dow 995
18	FFI' - Operating Hardware
19	'Centor' - Track
20	'Centor' - Hardware
21	Gasket / Weather Seal
22	Operating Handle
23	Fillet
24	'Centor' Bug Screen System
25	Threshold
100	23 Gauge Pin Nail 1"
100a	23 Gauge Pin Nail 1-3/8"
100b	23 Gauge Pin Nail 2"
100	23 Gauge Pin Nail
108	#8 X 1 1/2" Wood Screw SS
112	#14 X 2 1/2" Wood Screw SS
112a	#14 X 4" Wood Screw SS
112b	#14 X 3 1/2" Wood Screw SS
112c	#14 X 3 1/4" Wood Screw SS
112d	#14 X 5 1/2" Wood Screw SS
112e	#14 X 1 1/2" Wood Screw SS Pan Head
116	Tapcon 1/4" x 3 1/4" SS
116a	Tapcon 1/4" x 1-3/4" SS Hex
116b	Tapcon 1/4" x 2" SS
116c	Tapcon 1/4" x 4" SS
116d	Tapcon 1/4" x 3-3/4" SS philips
118	#8 X 1 1/2" Strap Screw SS
212	Strap 1-1/2" x 1-3/4" SS
213	Monarch Z Clip

ALL INSTALLATIONS TO BE EXECUTED PER THE APPLICABLE I.C.S. APPROVALS



Scale: 3" = 1'-0"

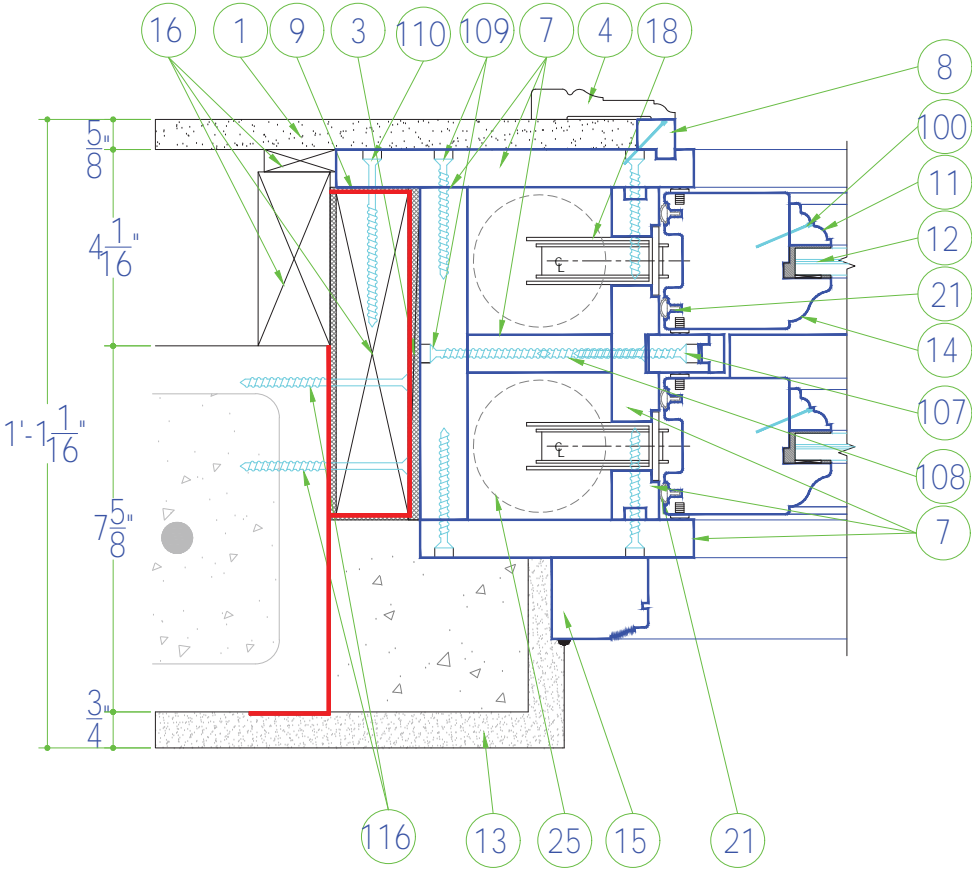
LUXBAUM WINDOWS + DOORS
 T: 1.561.684.1500 F:1.561.689.1506



1501 NORTHPOINT PARKWAY , SUITE 101
 WEST PALM BEACH, FL 33407 USA

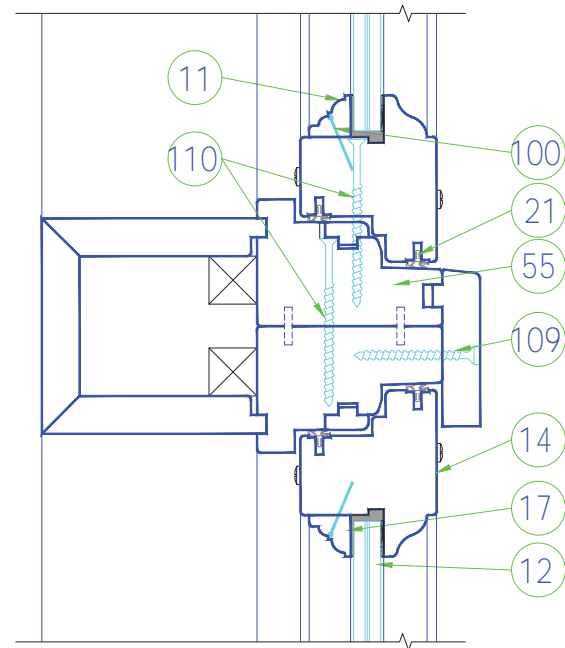
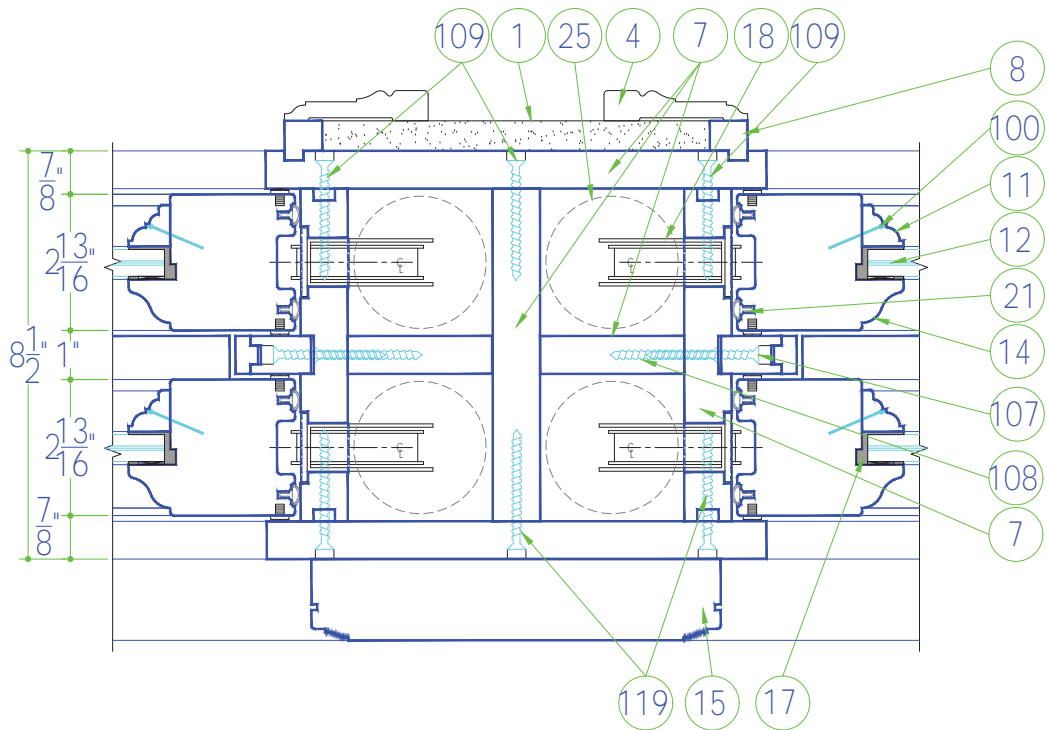
ARCHITECTS' CATALOG

DOUBLE HUNG WINDOW



#	DESCRIPTION
1	Drywall
2	Framing
3	Shim Shingles Max. 1/4"
4	Casing
5	Jamb Header
6	Jamb Sill
7	Jamb Leg
8	Jamb Extension
9	Pro-R Guard Fast Flash
10	Pro-R Guard Air Dam
11	Glasstop
12	Impact Glass / Insulated Glass
13	Stucco
14	Sash
15	Brickmold
16	Buck / Framing
17	Glazing - Dow 995
18	FFI' - Operating Hardware
19	'Centor' - Track
20	'Centor' - Hardware
21	Gasket / Weather Seal
22	Operating Handle
23	Fillet
24	'Centor' Bug Screen System
25	Threshold
100	23 Gauge Pin Nail 1"
100a	23 Gauge Pin Nail 1-3/8"
100b	23 Gauge Pin Nail 2"
100	23 Gauge Pin Nail
108	#8 X 1 1/2" Wood Screw SS
112	#14 X 2 1/2" Wood Screw SS
112a	#14 X 4" Wood Screw SS
112b	#14 X 3 1/2" Wood Screw SS
112c	#14 X 3 1/4" Wood Screw SS
112d	#14 X 5 1/2" Wood Screw SS
112e	#14 X 1 1/2" Wood Screw SS Pan Head
116	Tapcon 1/4" x 3 1/4" SS
116a	Tapcon 1/4" x 1-3/4" SS Hex
116b	Tapcon 1/4" x 2" SS
116c	Tapcon 1/4" x 4" SS
116d	Tapcon 1/4" x 3-3/4" SS philips
118	#8 X 1 1/2" Strap Screw SS
212	Strap 1-1/2" x 1-3/4" SS
213	Monarch Z Clip

ALL DIMENSIONS TO BE OBTAINED FROM THE APPLICABLE LIST APPROVALS



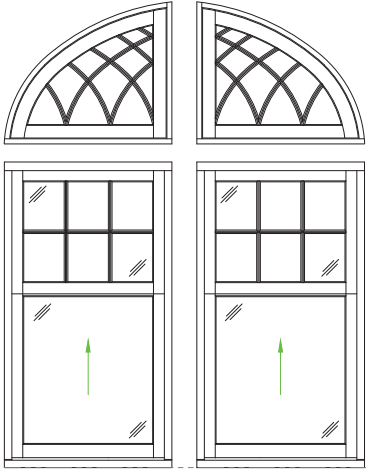
Scale: 3" = 1'-0"

LUXBAUM WINDOWS + DOORS
 T: 1.561.684.1500 F: 1.561.689.1506

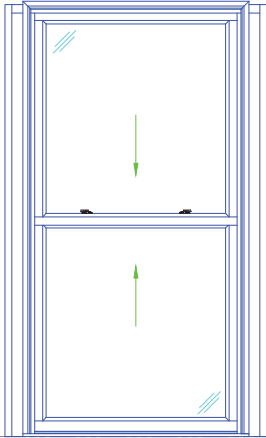


LUXBAUM
 WINDOWS + DOORS

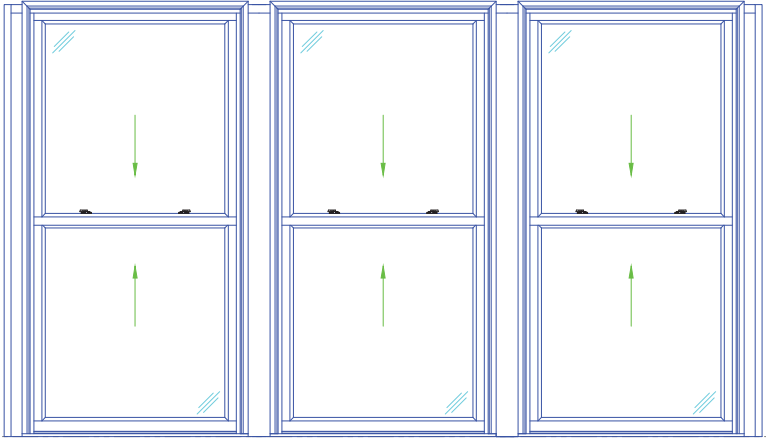
1501 NORTHPOINT PARKWAY , SUITE 101
 WEST PALM BEACH, FL 33407 USA



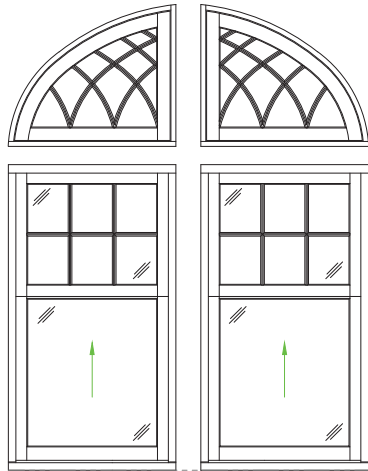
Double Hung Window



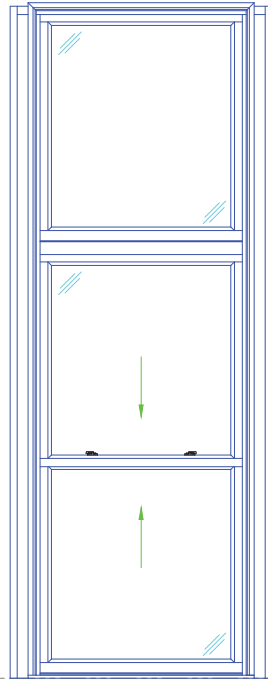
Double- or Single-
Hung Window
5'-2" x 9'-0"



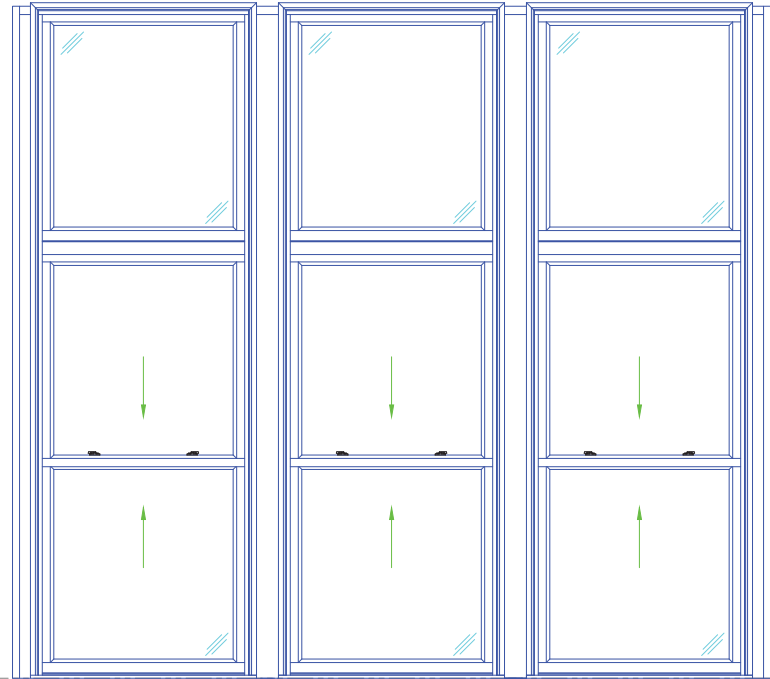
Triple Double- or Single-
Hung Window
15'-7" x 9'-0"



Double Hung Window



Double- or Single-
Hung Window with Transom
5'-2" x 14'-0"



Triple Double- or Single-
Hung Window with Transom
15'-7" x 14'-0"

Scale: 1/4" = 1'-0"

LUXBAUM WINDOWS + DOORS
T: 1.561.684.1500 F:1.561.689.1506



1501 NORTHPOINT PARKWAY , SUITE 101
WEST PALM BEACH, FL 33407 USA